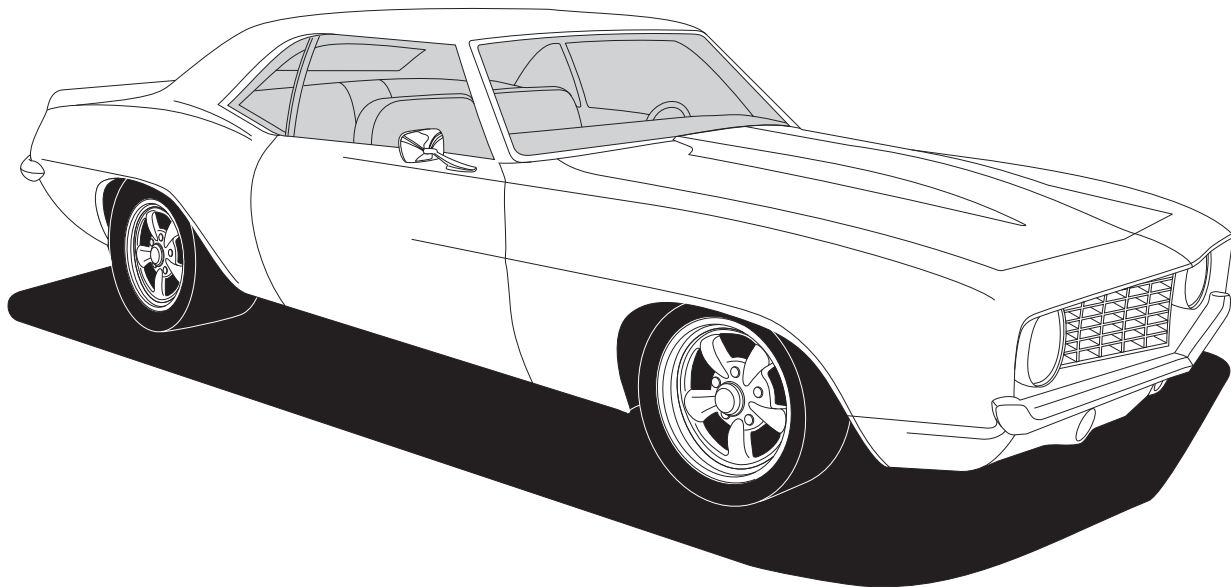




1969 CAMARO

w/ & w/o AC CONDENSER w/ DRIER
021169



18865 GOLL ST. - SAN ANTONIO, TX. - 78266 ph.210-654-7171 - fax 210-654-3113



Table of Contents

PAGES

1. COVER
2. TABLE OF CONTENTS
3. PACKING LIST/PARTS DISCLAIMER
4. CONDENSER BRACKET INSTALLATION
5. CONDENSER BRACKET INSTALLATION CONT.
DRIER INSTALLATION
6. HARDLINE INSTALLATION
HOOD LATCH ASSEMBLY
7. CONDENSER INSTALLATION
8. CONDENSER INSTALLATION CONT
#8 COND/FENDERWELL HARDLINE INSTALLATION
9. #6 DRIER/FENDERWELL HARDLINE INSTALLATION
SAFETY SWITCH INSTALLATION
10. PACKING LIST



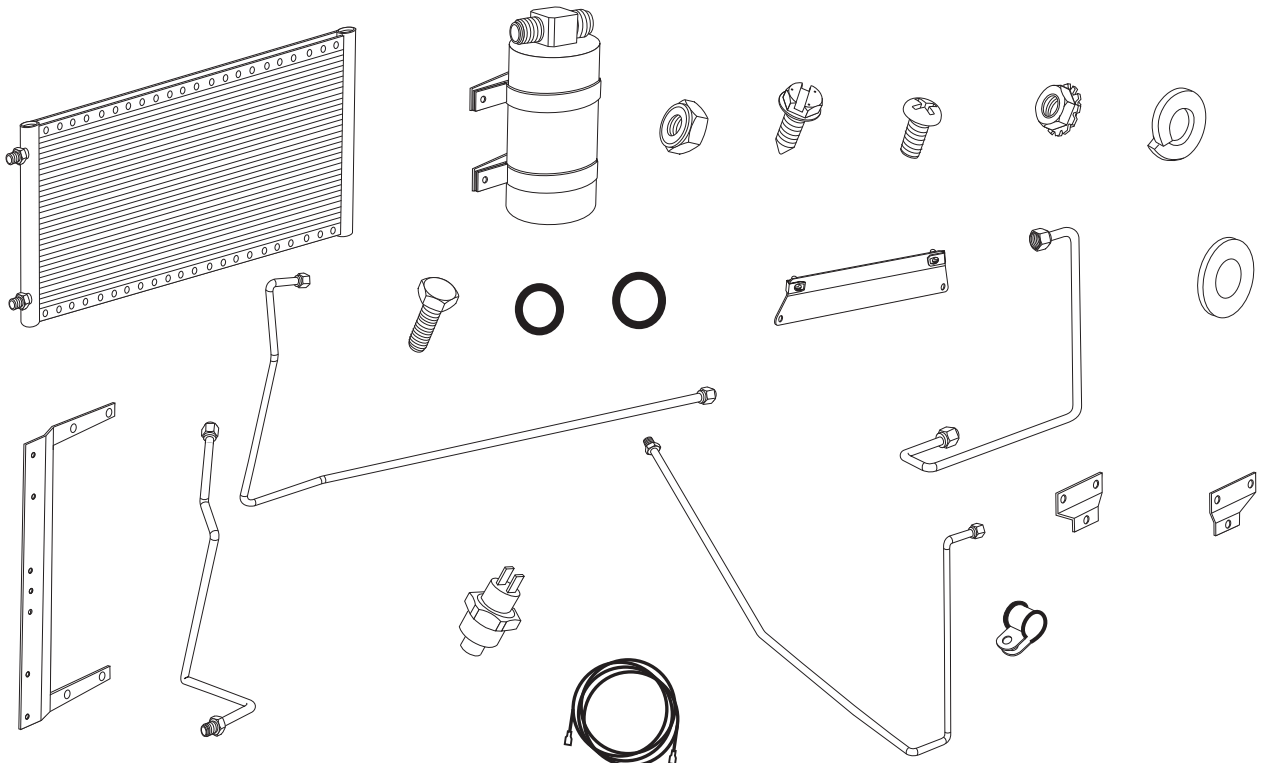
1969 CAMARO CONDENSER w/ DRIER

1969 CAMARO w/ or w/o FACTORY AIR w/ DRIER CONDENSER KIT PACKING LIST

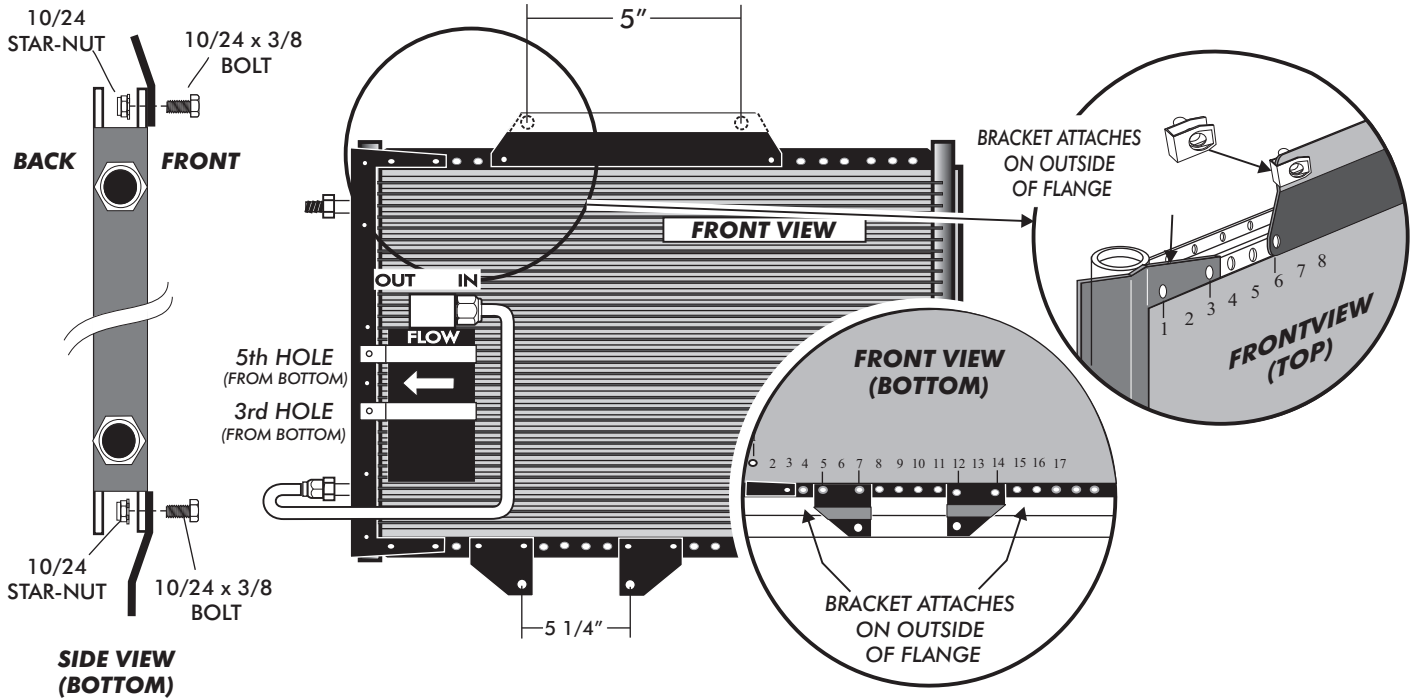
CONDENSER KIT
021169

No.	QTY.	PART No.	DESCRIPTION
1.	1	03766-VUC	14" X 22" PARALLEL FLOW COND.
2.	2	07113-VUB	DRIER CLAMP
3.	1	07321-VUC	DRIER
4.	1	18148-VUB	5/16" COARSE NUT
5.	3	18247-VUB	#10 SHEETMETAL SCREW
6.	10	18249-VUB	10/24" X 3/8" PH PAN HEAD
7.	10	18260-VUB	10/24" NUT w/STAR WASHER
8.	1	18610-VUB	5/16" LOCK WASHER
9.	2	18611-VUB	5/16" FLAT WASHER
10.	1	18310-VUB	5/16-18" x 1 1/2" COARSE BOLT
11.	2	18977-VUB	5/16" "U" NUT
12.	3	33857-VUF	#6 O'RING
13.	3	33858-VUF	#8 O'RING
14.	1	09169-FFD	#8 COND./HARDLINE
15.	1	35368-VCG	#6 HRDLN DRIER TO CONDENSER
16.	1	64268-VCB	67-8 CAMARO COND. BRKT. TOP
17.	1	64368-VCB	67-8 CAMARO COND. BRKT. BTM. RT
18.	1	64468-VCB	67-8 CAMARO COND. BRKT. BTM. LF
19.	1	65998-VUB	UNIVERSAL DRIER BRKT. 14-3/4"
20.	1	09170-FCD	#8 HARDLINE/COMPRESSOR LINE
21.	1	11079-VUS	MALE BINARY SWITCH
22.	1	23127-VUW	72" COMPRESSOR LEAD
23.	1	35067-VCG	DRIER HARDLINE
24.	3	31603-VUD	#4 ADEL CLAMP

**** BEFORE BEGINNING INSTALLATION OPEN ALL PACKAGES AND CHECK CONTENTS OF SHIPMENT. PLEASE REPORT ANY SHORTAGES DIRECTLY TO VINTAGE AIR WITHIN 15 DAYS. AFTER 15 DAYS, VINTAGE AIR WILL NOT BE RESPONSIBLE FOR MISSING OR DAMAGED ITEMS.**



CONDENSER BRACKET INSTALLATION



ON A WORK BENCH ASSEMBLE CONDENSER AS FOLLOWS:

- INSTALL DRIER MOUNTING BRACKET ON TO CONDENSER USING (4) 10/24 x 3/8 PAN HEAD SCREWS AND (4) 10/24 NUTS WITH STAR WASHERS. SEE FIGURE 1 BELOW.
NOTE: BRACKETS MOUNT THROUGH THE FIRST AND THIRD HOLE IN THE CONDENSER.

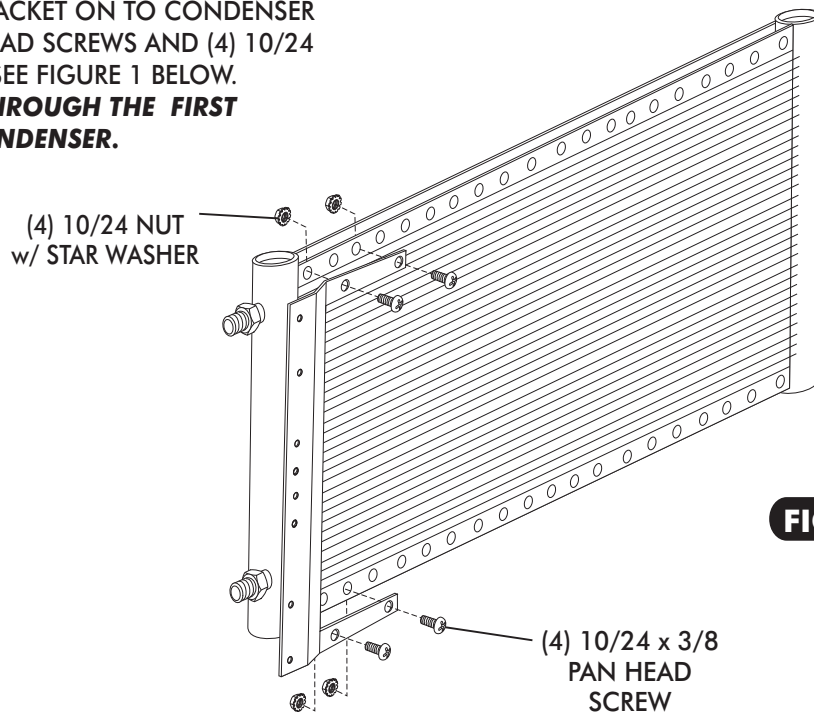


FIGURE 1



TOP MOUNTING BRACKET INSTALLATION

- INSTALL TOP MOUNTING BRACKET ON TO CONDENSER USING (2) 10/24 x 3/8 PAN HEAD SCREWS AND (2) 10/24 NUTS WITH STAR WASHERS. SEE FIGURE 2 BELOW. **NOTE: BRACKET MOUNT THROUGH THE 6TH HOLE FROM THE LEFT SIDE OF THE CONDENSER.**

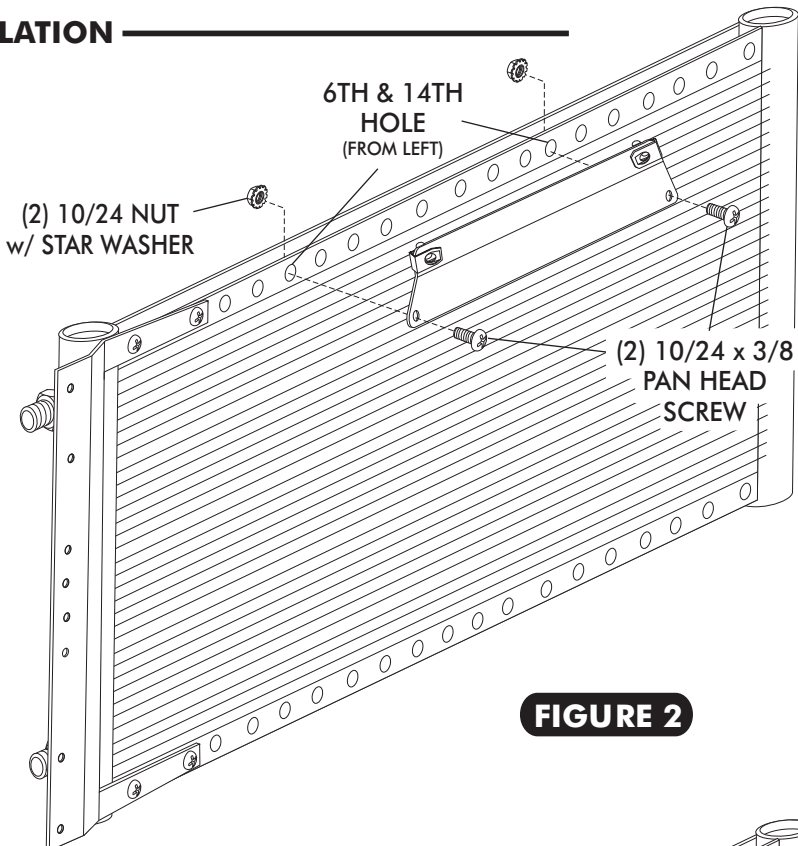


FIGURE 2

DRIER INSTALLATION

- INSTALL DRIER CLAMPS ON DRIER AS SHOWN
- USING (2) #10 x 1/2" SHEETMETAL SCREWS INSTALL DRIER ON BRACKET IN THE 3RD AND 5TH HOLES FROM THE BOTTOM AS SHOWN FIGURE 3.

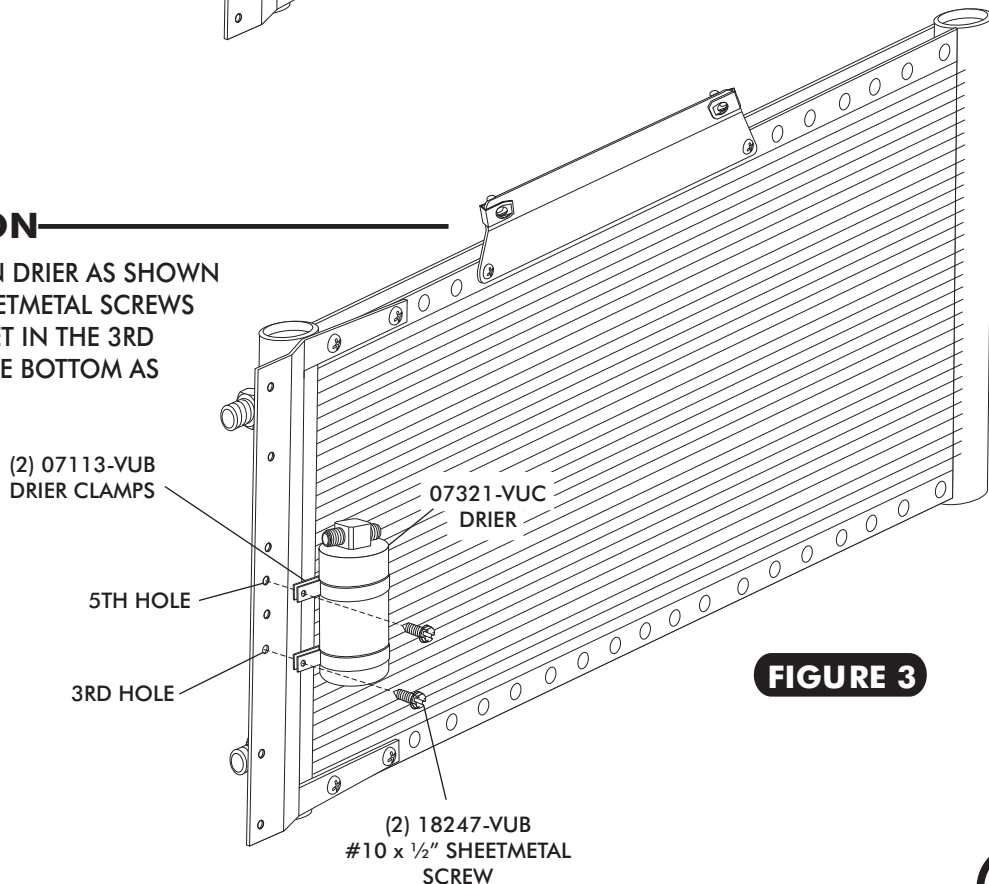


FIGURE 3



HARDLINE INSTALLATION

- LUBRICATE (2) #6 O-RINGS (SEE FIGURE 4a, BELOW) AND INSTALL THE #6 DRIER/CONDENSER HARDLINE AS SHOWN IN FIGURE 4 BELOW. TIGHTEN FITTINGS AS SHOWN IN FIGURE 4a, BELOW.
- LUBRICATE A #8 O-RING (SEE FIGURE 4a, BELOW) AND INSTALL THE #8 CONDENSER HARDLINE AS SHOWN IN FIGURE 4 BELOW. TIGHTEN FITTINGS AS SHOWN IN FIGURE 4a, BELOW.
- INSTALL (2) #4 ADEL CLAMPS ON HARDLINE AS SHOWN IN FIGURE 4. USING (4) 10/24 x 3/8 PAN HEAD SCREWS WITH (4) 10/24 NUTS WITH STAR WASHERS INSTALL THE (2) LOWER CONDENSER MOUNTING BRACKETS. SEE FIGURE 4.

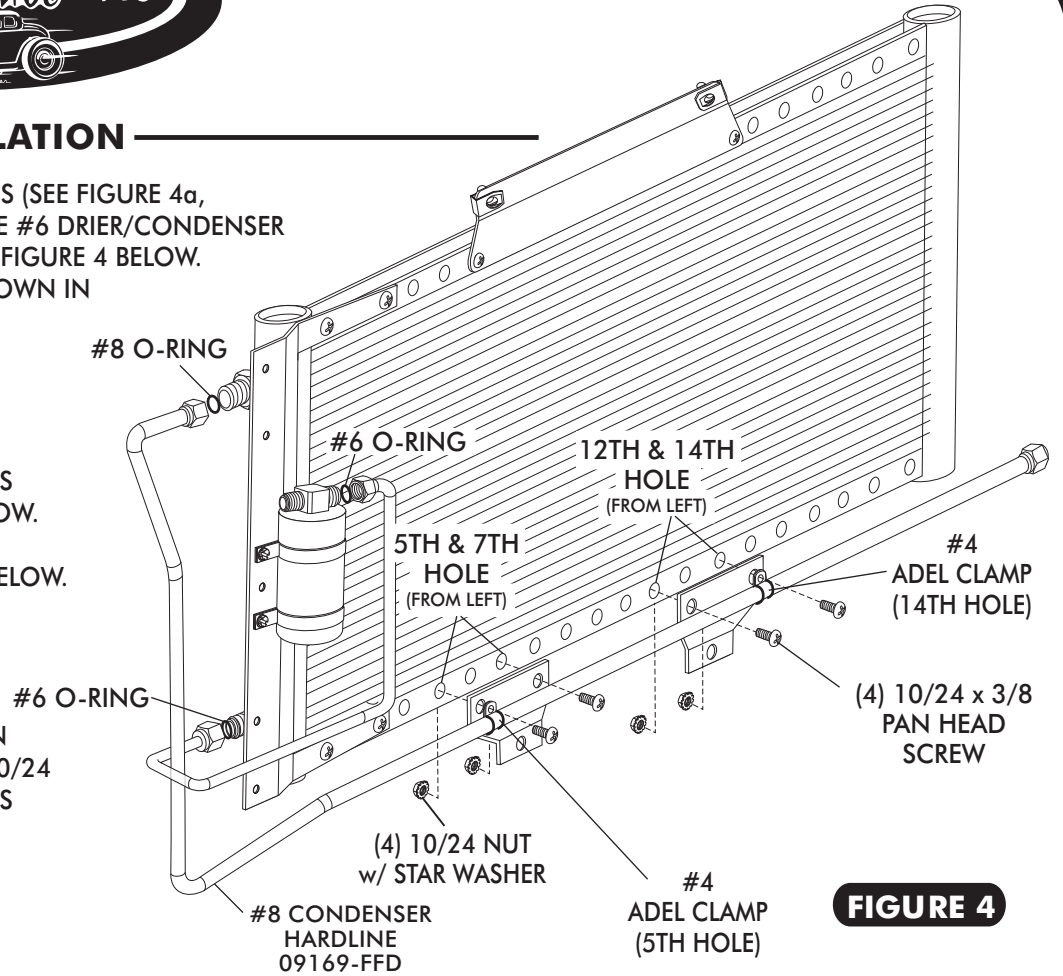
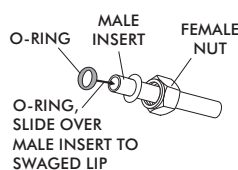


FIGURE 4

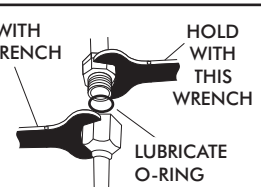
FOR A PROPER SEAL OF FITTINGS:
INSTALL SUPPLIED O-RINGS AS SHOWN AND LUBRICATE WITH SUPPLIED OIL.



#6 O-RING #8 O-RING



SUPPLIED OIL FOR O-RINGS
TWIST WITH THIS WRENCH



HOLD WITH THIS WRENCH
LUBRICATE O-RING

FIGURE 4a

HOOD LATCH ASSEMBLY

- REMOVE OEM HOOD LATCH ASSEMBLY SEE FIGURE 5 BELOW.

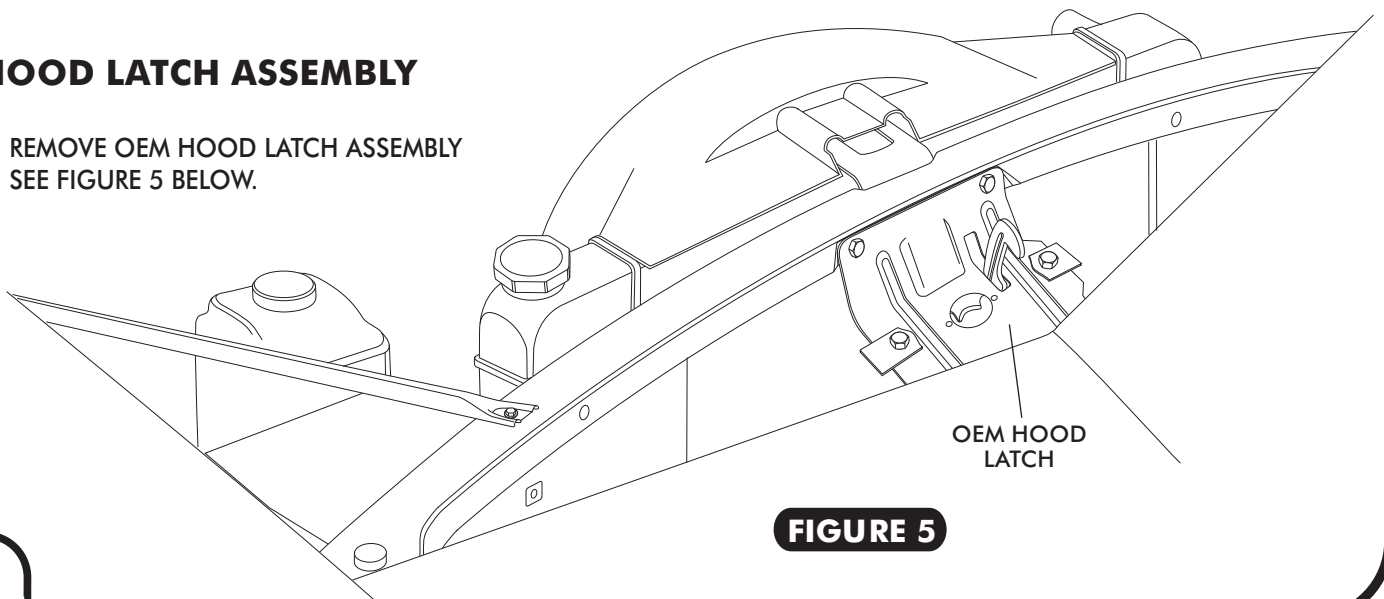


FIGURE 5



CONDENSER INSTALLATION

- INSTALL CONDENSER AS SHOWN BELOW, LOWER CONDENSER WITH HARDLINES BETWEEN THE FRONT SIDE OF THE CORE SUPPORT AND THE FRONT HEADER SEE FIGURE 6 BELOW.

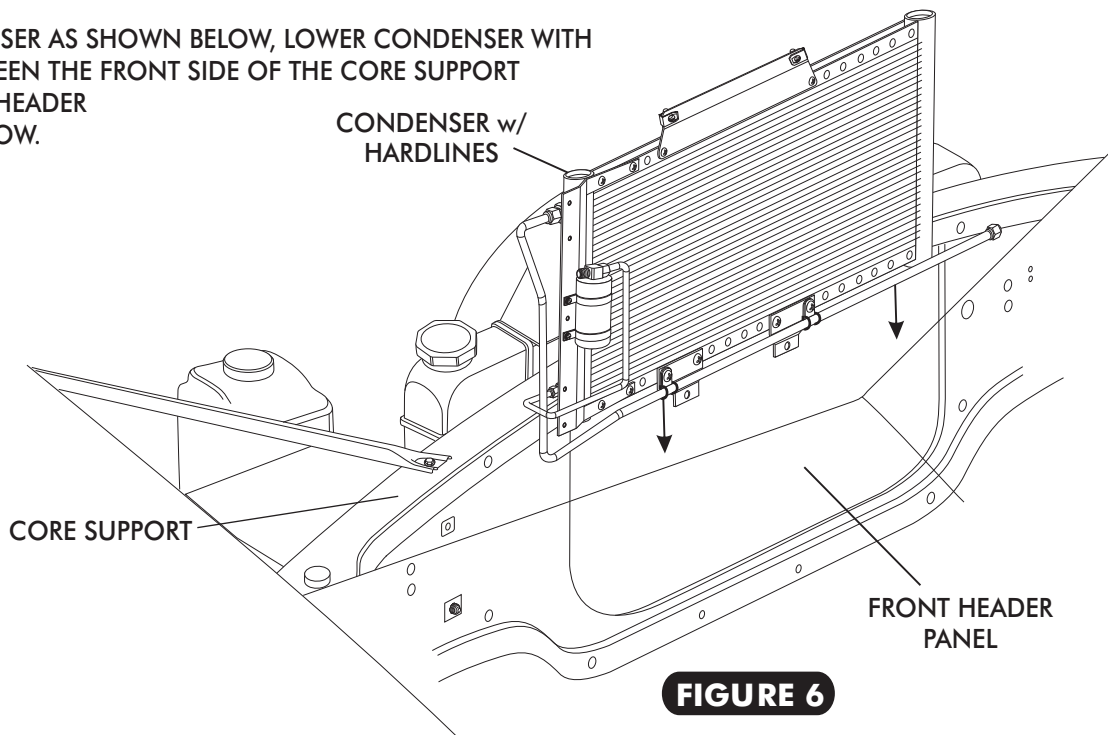


FIGURE 6

- NOTE: THE TOP MOUNTING BRACKET GOES ON THE BACKSIDE OF THE CORE SUPPORT.
- SECURE THE BOTTOM DRIVER SIDE OF THE CONDENSER TO THE CORE SUPPORT USING A 5/16-18 x 1 1/2" HEX BOLT, FLAT WASHER, LOCK WASHER, AND 5/16 HEX NUT. SEE FIGURE 7, BELOW.
- SECURE THE BOTTOM PASSENGER SIDE OF THE CONDENSER TO THE CORE SUPPORT USING OEM BOLT. SEE FIGURE 7, BELOW.

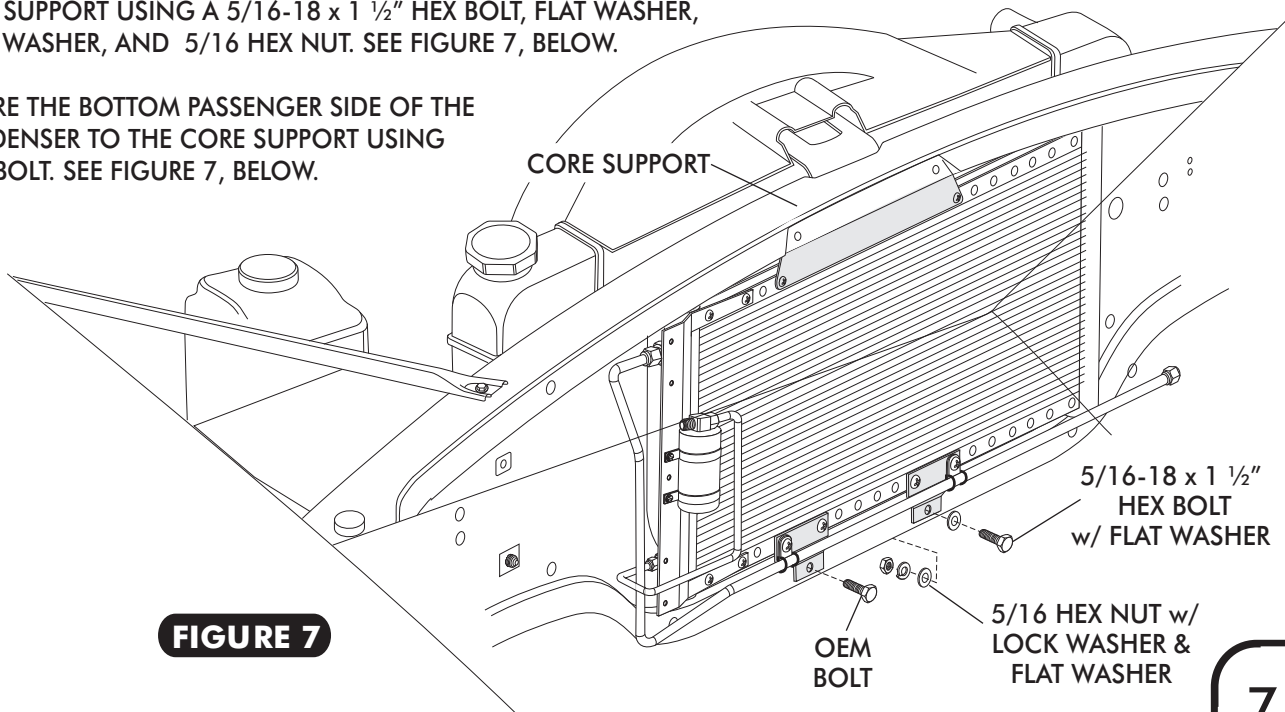
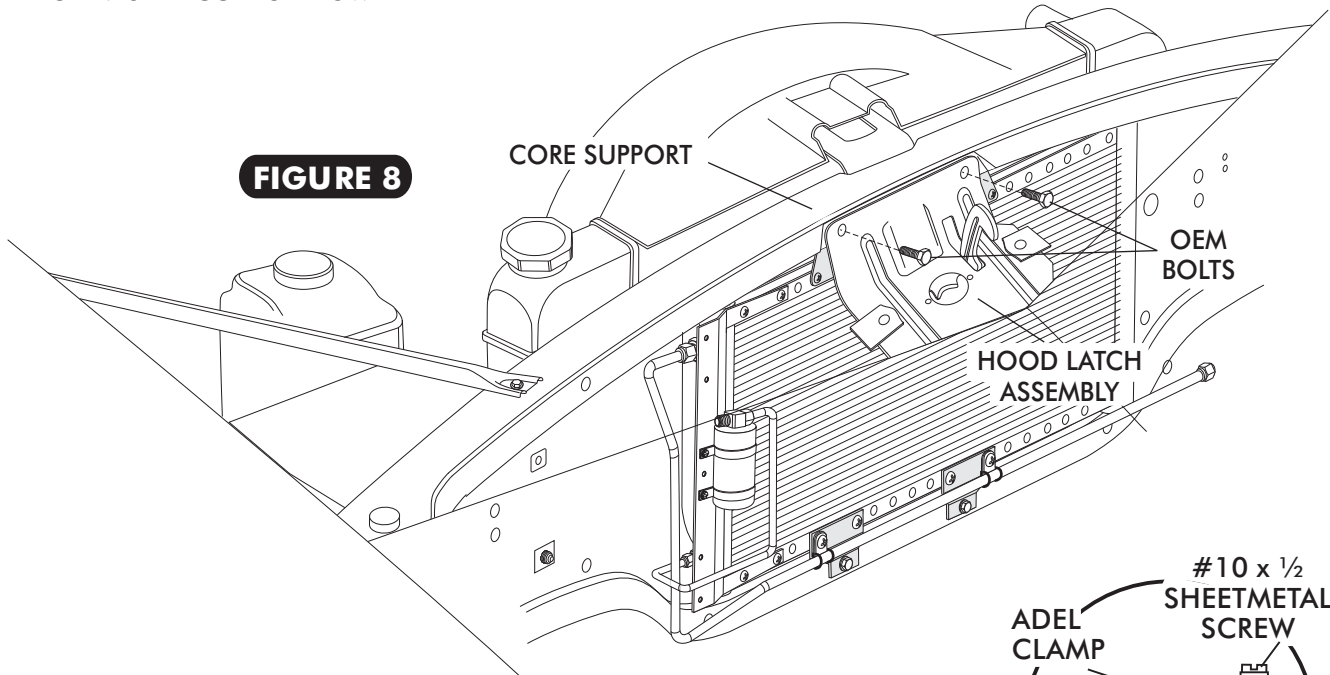


FIGURE 7

- USING OEM BOLTS RE-INSTALL HOOD LATCH ASSEMBLY, INSTALL OEM BOLTS THROUGH THE HOOD LATCH ASSEMBLY THROUGH THE CORE SUPPORT AND THREAD BOLTS INTO U-NUTS ON THE TOP CONDENSER BRACKET. SEE FIGURE 8 BELOW



- LUBRICATE A #8 O-RING (SEE FIGURE 4a, PAGE 6) AND INSTALL THE #8 HARDLINE FROM CONDENSER/ FENDERWELL AS SHOWN IN FIGURE 9 BELOW. TIGHTEN FITTINGS AS SHOWN IN FIGURE 4a, PAGE 6.

- USE A # 4 ADEL CLAMP AND SECURE THE #8 HARDLINE TO THE INNER FENDERWELL. SEE FIGURE 9a.

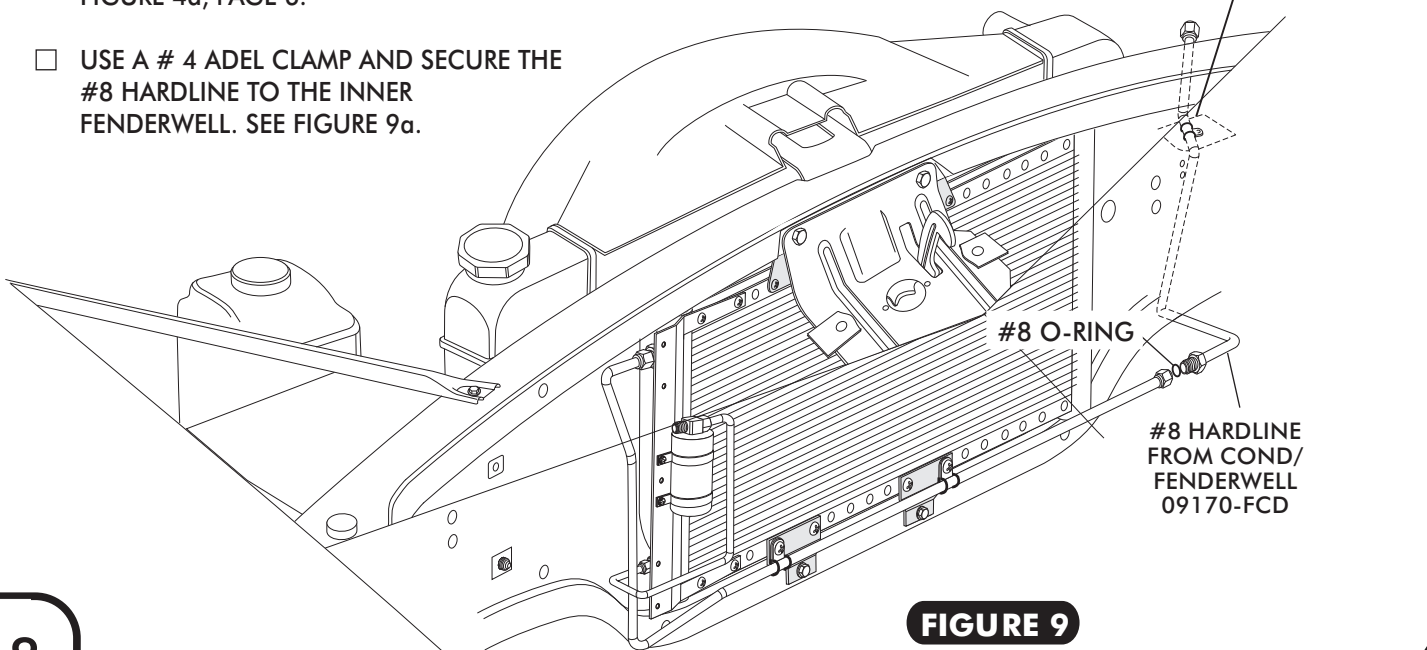


FIGURE 9



1969 CAMARO CONDENSER w/ DRIER

- LUBRICATE A #6 O-RING (SEE FIGURE 4a, PAGE 6) AND INSTALL THE #6 DRIER/FENDERWELL HARDLINE AS SHOWN IN FIGURE 10 BELOW. TIGHTEN FITTINGS AS SHOWN IN FIGURE 4a, PAGE 6.

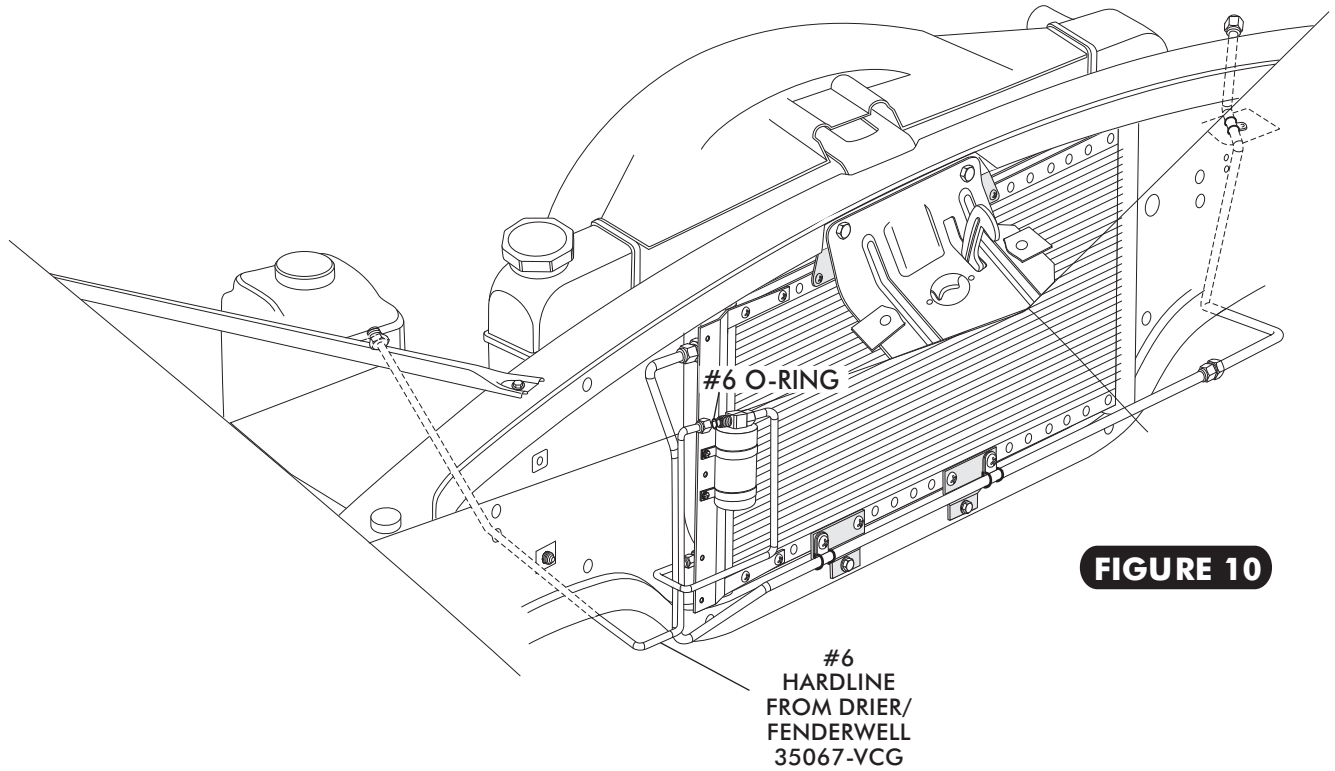


FIGURE 10

- INSTALL BINARY SWITCH ON DRIER AS SHOWN IN FIGURE 11 BELOW.

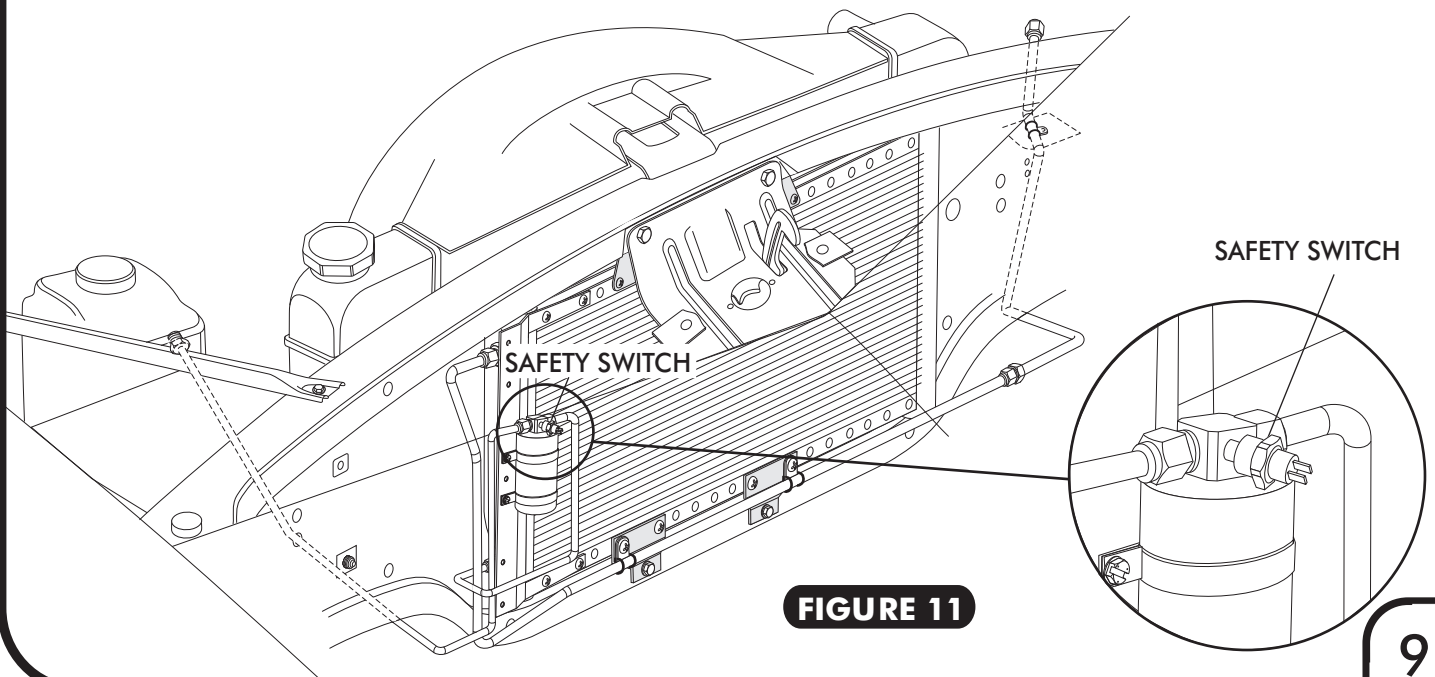


FIGURE 11



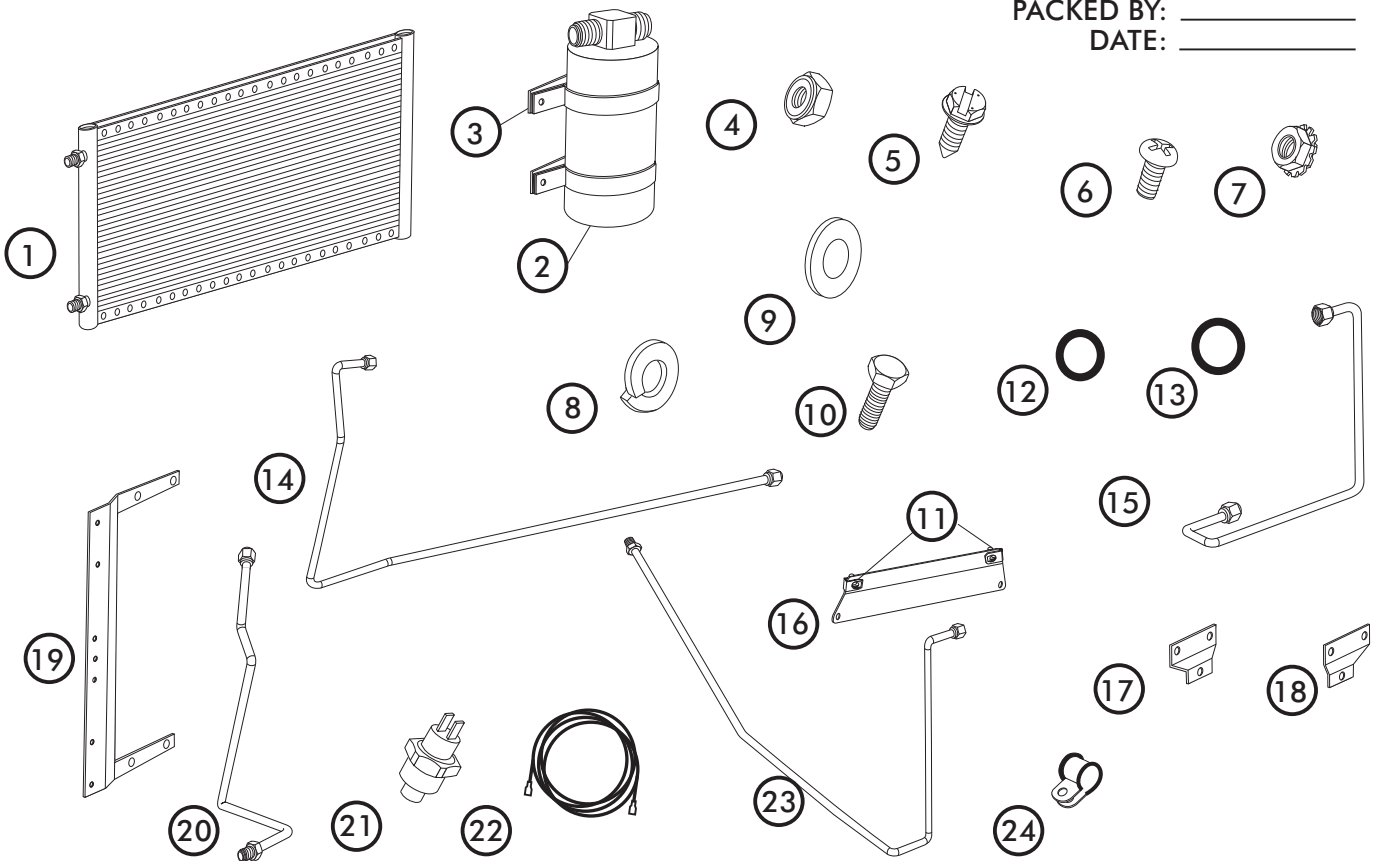
1969 CAMARO CONDENSER w/ DRIER

1969 CAMARO w/ or w/o FACTORY AIR w/ DRIER CONDENSER KIT PACKING LIST

CONDENSER KIT
021169

No.	QTY.	PART No.	DESCRIPTION
1.	1	03766-VUC	14" X 22" PARALLEL FLOW COND.
2.	2	07113-VUB	DRIER CLAMP
3.	1	07321-VUC	DRIER
4.	1	18148-VUB	5/16" COARSE NUT
5.	3	18247-VUB	#10 SHEETMETAL SCREW
6.	10	18249-VUB	10/24" X 3/8" PH PAN HEAD
7.	10	18260-VUB	10/24" NUT w/STAR WASHER
8.	1	18610-VUB	5/16" LOCK WASHER
9.	2	18611-VUB	5/16" FLAT WASHER
10.	1	18310-VUB	5/16-18" x 1 1/2" COARSE BOLT
11.	2	18977-VUB	5/16" "U" NUT
12.	3	33857-VUF	#6 O'RING
13.	3	33858-VUF	#8 O'RING
14.	1	09169-FFD	#8 COND./HARDLINE
15.	1	35368-VCG	#6 HRDLN DRIER TO CONDENSER
16.	1	64268-VCB	67-8 CAMARO COND. BRKT. TOP
17.	1	64368-VCB	67-8 CAMARO COND. BRKT. BTM. RT
18.	1	64468-VCB	67-8 CAMARO COND. BRKT. BTM. LF
19.	1	65998-VUB	UNIVERSAL DRIER BRKT. 14-3/4"
20.	1	09170-FCD	#8 HARDLINE/COMPRESSOR LINE
21.	1	11079-VUS	MALE BINARY SWITCH
22.	1	23127-VUW	72" COMPRESSOR LEAD
23.	1	35067-VCG	DRIER HARDLINE
24.	3	31603-VUD	#4 ADEL CLAMP

CHECKED BY: _____
PACKED BY: _____
DATE: _____





1969 CAMARO w/wo A/C

1969 CAMARO w/ or w/o FACTORY AIR w/ DRIER CONDENSER KIT PACKING LIST

ALL PARTS IN
BAG/BOX

CONDENSER KIT
021169

No.	QTY.	PART No.	DESCRIPTION
1.	1	03766-VUC	14" X 22" PARALLEL FLOW COND.
2.	2	07113-VUB	DRIER CLAMP
3.	1	07321-VUC	DRIER
4.	1	18148-VUB	5/16" COARSE NUT
5.	2	18247-VUB	#10 SHEETMETAL SCREW
6.	13	18249-VUB	10/24" X 3/8" PH PAN HEAD
7.	13	18260-VUB	10/24" NUT w/STAR WASHER
8.	1	18610-VUB	5/16" LOCK WASHER
9.	2	18611-VUB	5/16" FLAT WASHER
10.	1	18310-VUB	5/16-18" x 1 1/2" COARSE BOLT
11.	2	18977-VUB	5/16" "U" NUT
12.	1	20537-VUM	CONDENSER/HARDLINE BOX
13.	1	20560-VUM	CONDENSER PAD
14.	1	20562-VUM	CONDENSER INSERT
15.	1	21050-VUP	4 x 6 BAG
16.	3	33857-VUF	#6 O'RING
17.	3	33858-VUF	#8 O'RING
18.	1	09169-FFD	#8 COND./HARDLINE
19.	1	35368-VCG	#6 HRDLN DRIER TO CONDENSER
20.	1	64268-VCB	67-8 CAMARO COND. BRKT. TOP
21.	1	64368-VCB	67-8 CAMARO COND. BRKT. BTM. RT
22.	1	64468-VCB	67-8 CAMARO COND. BRKT. BTM. LF
23.	1	65998-VUB	UNIVERSAL DRIER BRKT. 14-3/4"
24.	1	09170-FCF	#8 HARDLINE/COMPRESSOR LINE
25.	3	31603-VUD	#4 ADEL CLAMP
26.	1	11079-VUS	MALE BINARY SWITCH
27.	1	23127-VUW	72" COMPRESSOR LEAD
28.	1	35067-VCG	DRIER HARDLINE
29.	1	20111-VUM	9 x 12 BAG
30.	1	31600-VUD	#2 ADEL CLAMP
31.	1	18150-VUB	10/32 MACHINE NUT
32.	1	18250-VUB	10/32 x 1/2 PH PAN-HEAD

CHECKED BY: _____
 PACKED BY: _____
 DATE: _____

