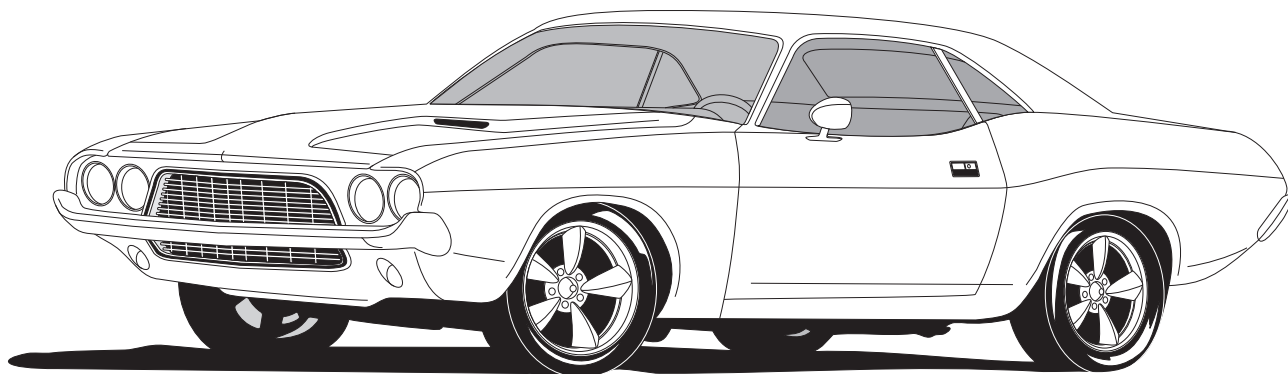




1970-74 CHALLENGER CUDA w/ AC CONDENSER w/ DRIER 051073-EDA



18865 GOLL ST. - SAN ANTONIO, TX. - 78266 ph.210-654-7171 - fax 210-654-3113



Table of Contents

PAGES

1. COVER
2. TABLE OF CONTENTS
3. PACKING LIST/PARTS DISCLAIMER
4. INFORMATION PAGE
5. CONDENSER BRACKET INSTALLATION
6. CONDENSER INSTALLATION CONT.
7. DRIER INSTALLATION
8. HOOD LATCH REMOVAL/CONDENSER INSTALLATION
9. CONDENSER ASM. INSTALLATION CONT.
10. HARDLINE INSTALLATION
11. CONDENSER KIT PACKING LIST



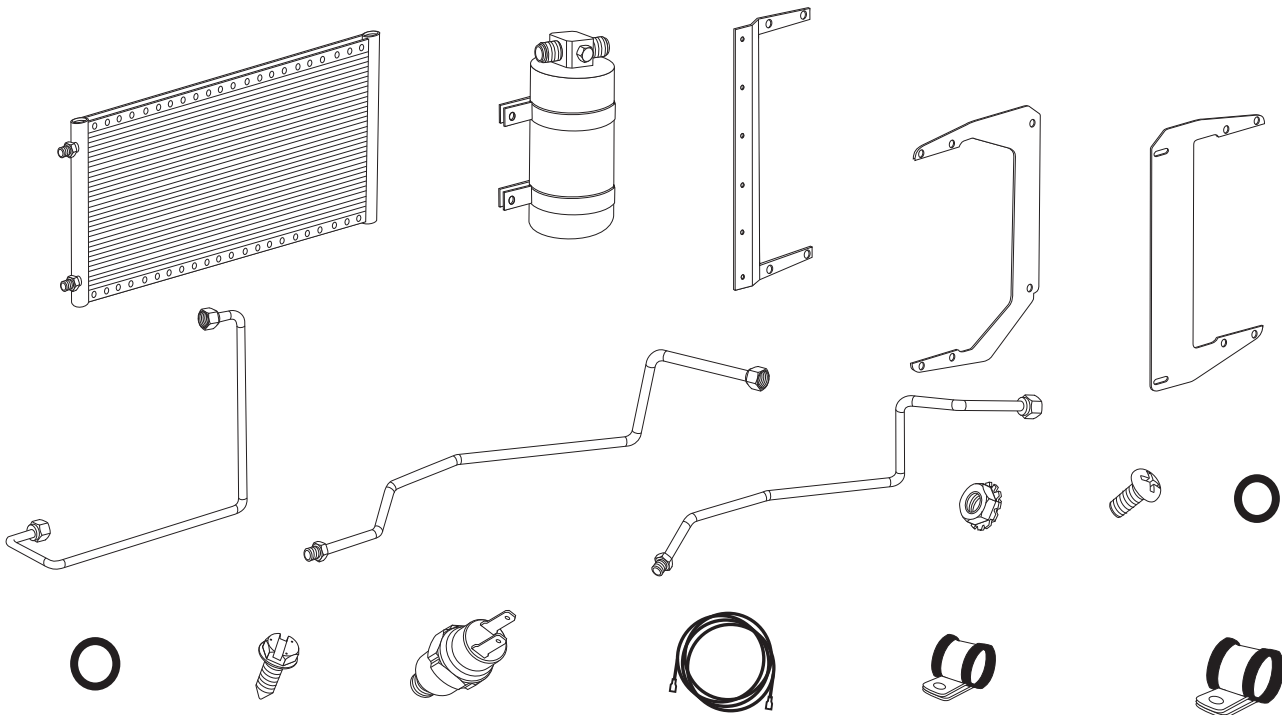
1970-74 CHALNGR/CUDA w/AC CONDENSER w/ DRIER

CONDENSER KIT PACKING LIST

CONDENSER KIT
051073-EDA

No.	QTY.	PART No.	DESCRIPTION
1.	1	03766-VUC	SUPER FLOW CONDENSER 14 x 22
2.	1	07321-VUC	DRIER
3.	2	07113-VUB	DRIER CLAMP
4.	1	65998-VUB	DRIER BRKT
5.	1	646000-PDB	70-74 CHALNGR/CUDA w/ AC DS COND BRKT
6.	1	646001-PDB	70-74 CHALNGR/CUDA w/ AC PS COND BRKT
7.	1	35368-VCG	#6 COND/DRIER HARDLINE
8.	1	101006-ECL	70-74 CHALNGR/CUDA w/ AC #6 DR/CORE HARDLINE
9.	1	101008-ECD	70-74 CHALNGR/CUDA w/ AC #8 COND HARDLINE
10.	12	18260-VUB	10/24 NUT w/ STAR WASHER
11.	12	18249-VUB	10-24 x 3/8" PH PAN HEAD SCREW
12.	3	33857-VUF	#6 O-RING
13.	1	33858-VUF	#8 O-RING
14.	4	18247-VUB	#10 x 1/2" SHEETMETAL SCREW
15.	1	11079-VUS	MALE BINARY SWITCH
16.	1	23135-VUW	COMPRESSOR LEAD
17.	2	31600-VUD	#2 ADEL CLAMP
18.	2	31603-VUD	#4 ADEL CLAMP

**** BEFORE BEGINNING INSTALLATION OPEN ALL PACKAGES AND CHECK CONTENTS OF SHIPMENT. PLEASE REPORT ANY SHORTAGES DIRECTLY TO VINTAGE AIR WITHIN 15 DAYS. AFTER 15 DAYS, VINTAGE AIR WILL NOT BE RESPONSIBLE FOR MISSING OR DAMAGED ITEMS.**



NOTE: IMAGES MAY NOT DEPICT ACTUAL PARTS AND QUANTITIES. REFER TO PACKING LIST FOR ACTUAL PARTS AND QUANTITIES.

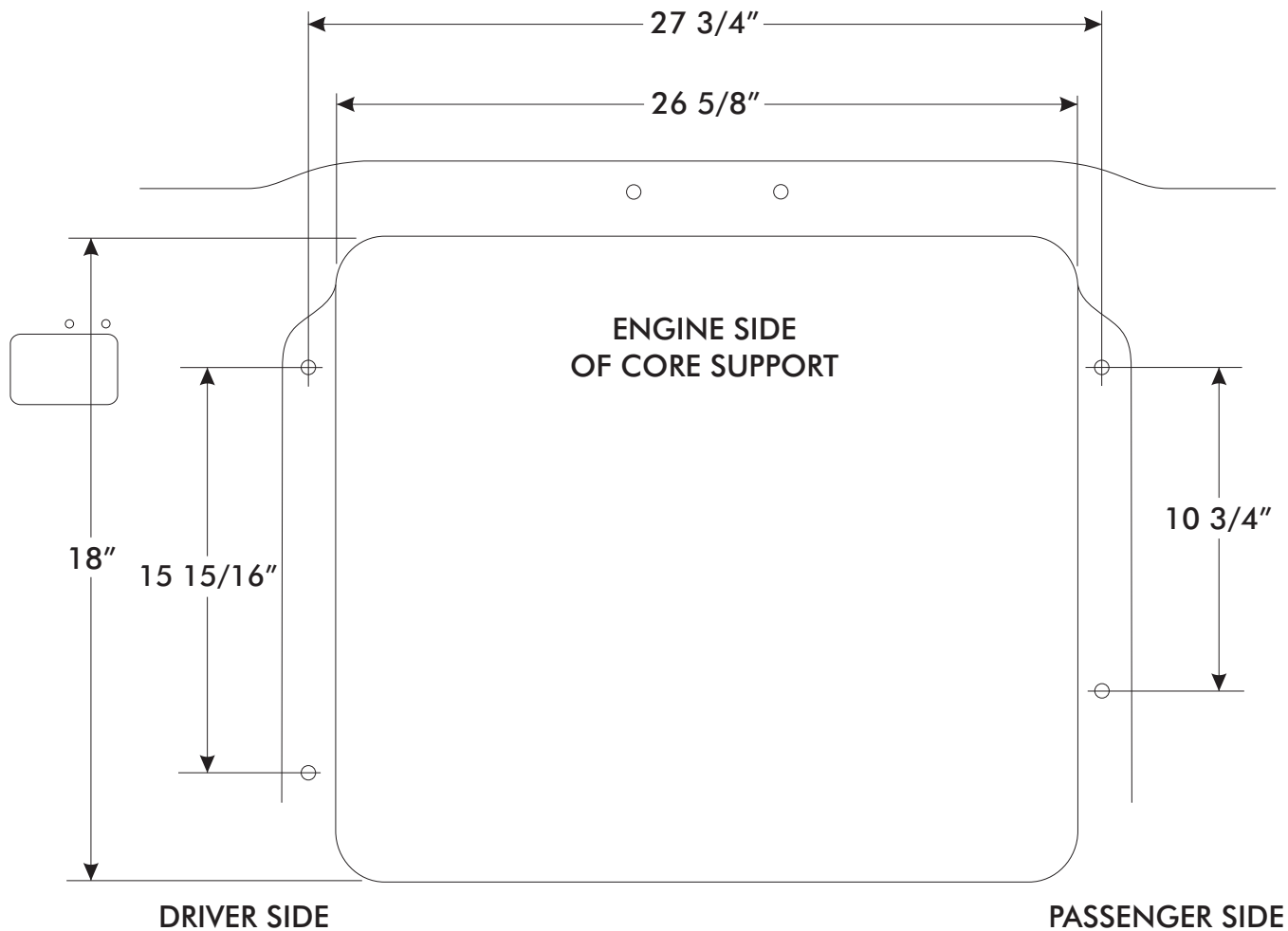


1970-74 CHALNGR/CUDA w/AC CONDENSER w/ DRIER

1970-74 CHALLENGER/CUDA GEN IV

IMPORTANT NOTICE-PLEASE READ

THIS KIT WAS DEVELOPED BASED ON THE MEASUREMENTS BELOW, WHICH WERE TAKEN FROM A 1973 CHALLENGER w/ FACTORY AIR CORE SUPPORT.

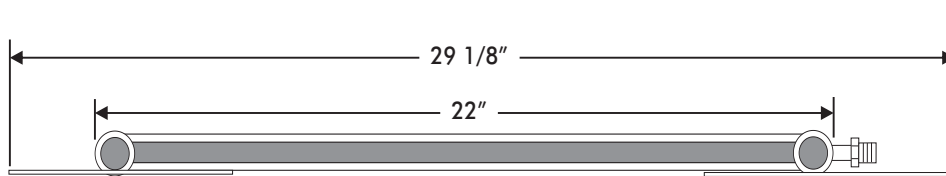




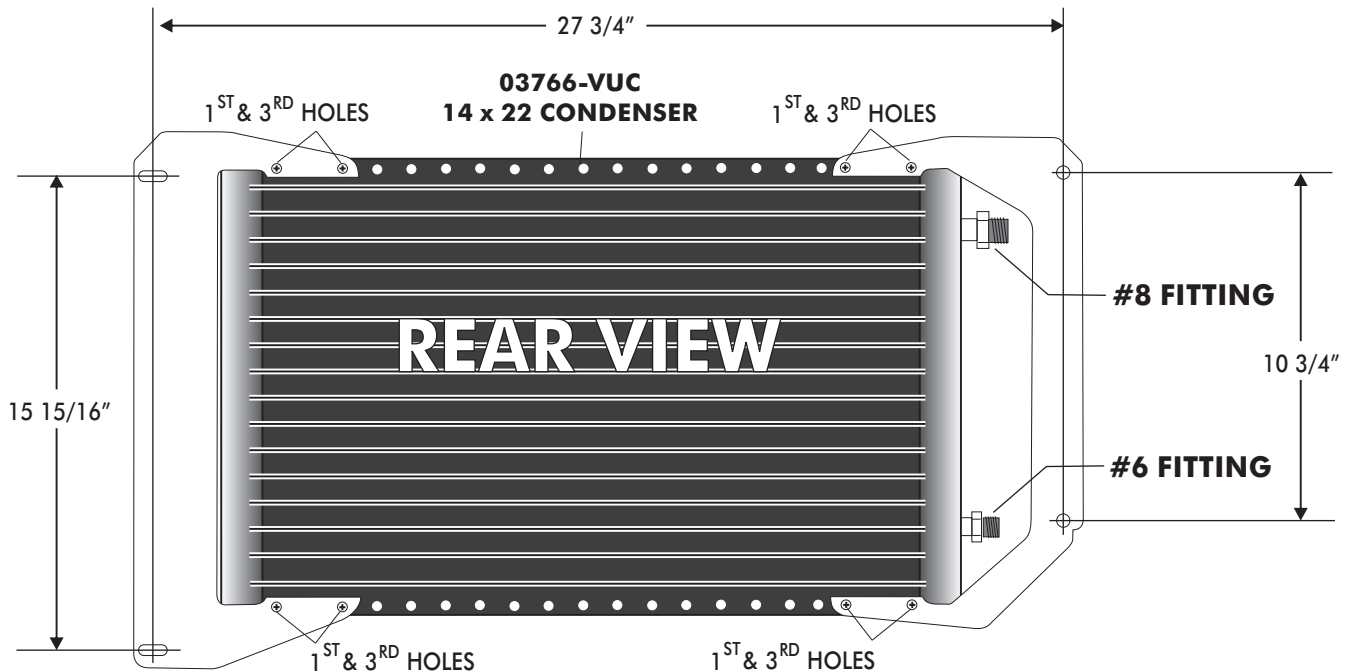
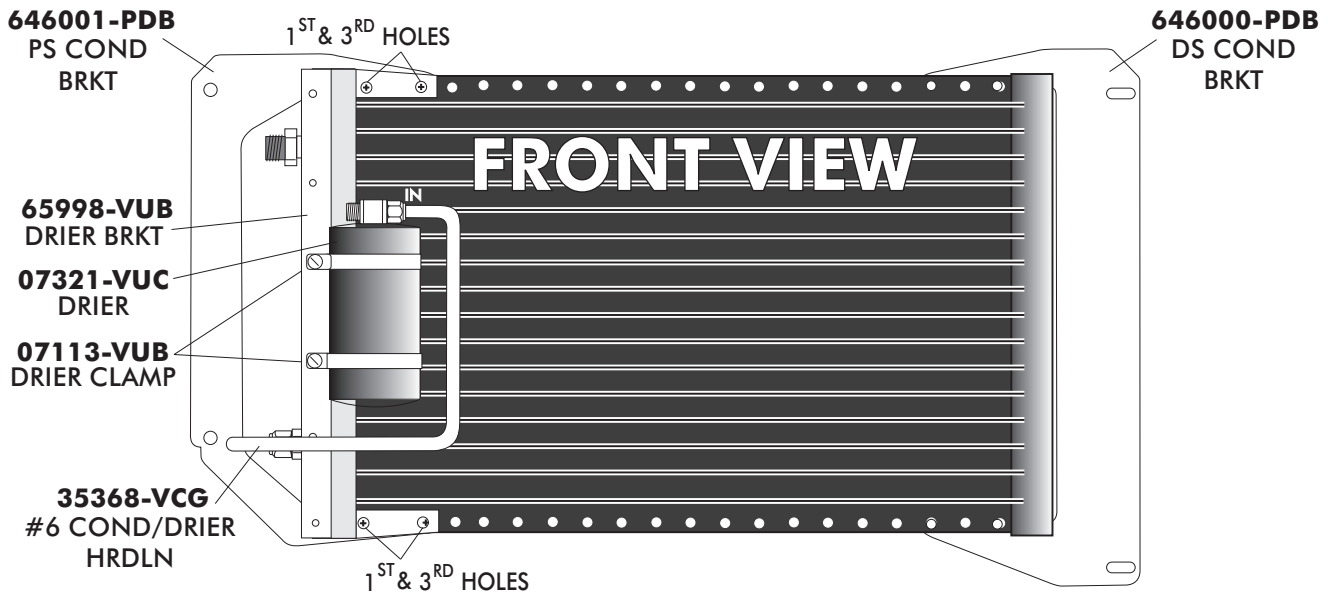
1970-74 CHALNGR/CUDA w/AC CONDENSER w/ DRIER

CONDENSER BRACKET INSTALLATION

TOP VIEW



BACK





DRIER BRACKET INSTALLATION

- INSTALL DRIER MOUNTING BRACKET ON CONDENSER USING (4) 10/24 x 3/8 PAN HEAD SCREWS AND (4) 10/24 NUTS WITH STAR WASHERS. SEE FIGURE 1 BELOW.

NOTE: BRACKETS MOUNT THROUGH THE FIRST AND THIRD HOLES IN THE CONDENSER.

(8) 10/24 NUT w/ STAR WASHER

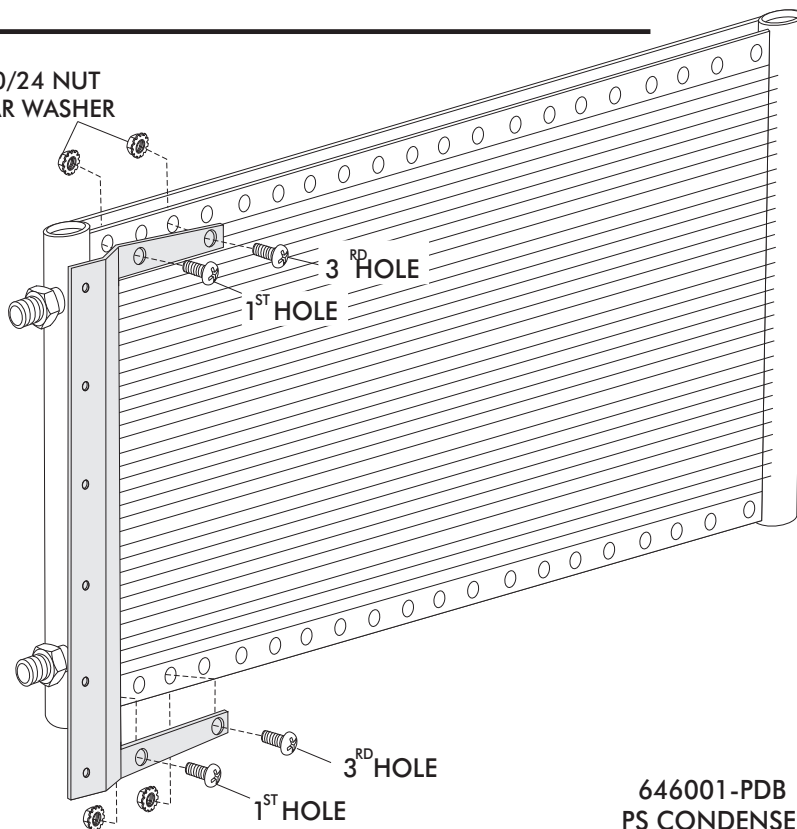


FIGURE 1

MOUNTING BRACKET INSTALLATION

- INSTALL CONDENSER MOUNTING BRACKET ON CONDENSER USING (8) 10/24 x 3/8 PAN HEAD SCREWS AND (8) 10/24 NUTS WITH STAR WASHERS. SEE FIGURE 2 BELOW.

NOTE: BRACKETS MOUNT THROUGH THE FIRST AND THIRD HOLE IN THE CONDENSER.

(8) 10/24 NUT w/ STAR WASHER

646000-PDB DS CONDENSER BRKT

646001-PDB PS CONDENSER BRKT

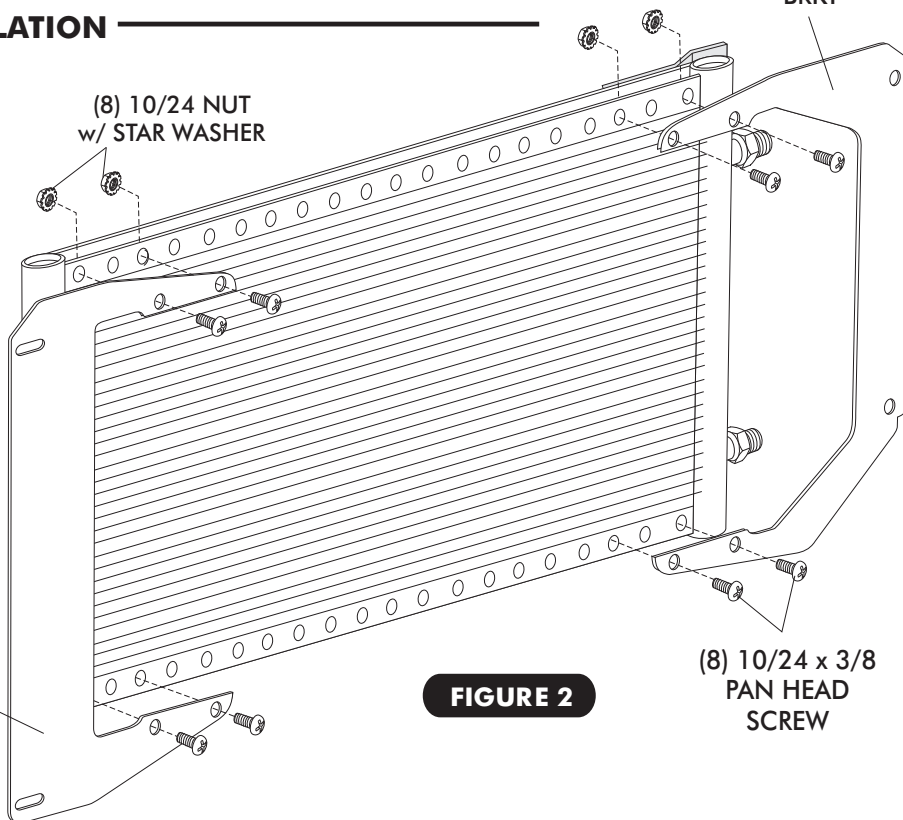


FIGURE 2



DRIER INSTALLATION

- PLACE DRIER CLAMPS AROUND DRIER AS SHOWN BELOW IN FIGURE 3, SECURE DRIER TO DRIER BRACKET USING (2) #10 x 1/2" SHEETMETAL SCREWS.

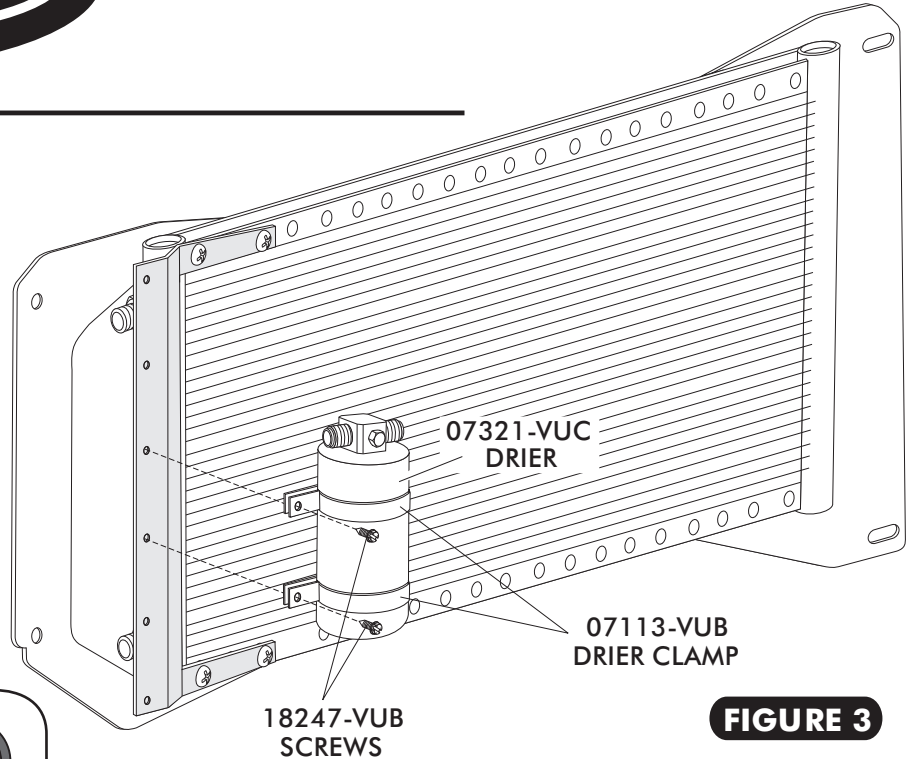
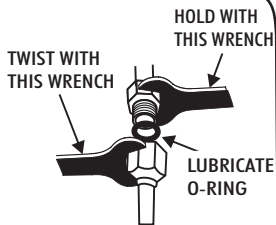


FIGURE 3



FOR A PROPER SEAL OF FITTINGS - INSTALL SUPPLIED O-RINGS AS SHOWN AND LUBRICATE WITH SUPPLIED OIL.

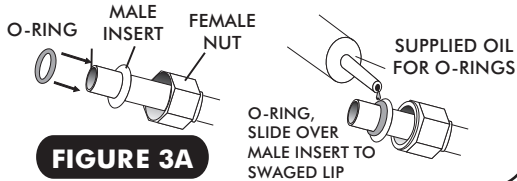
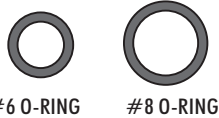


FIGURE 3a

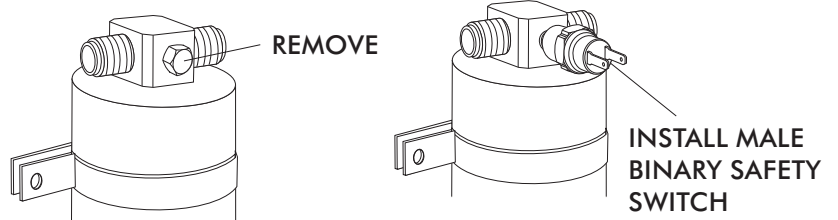


FIGURE 3b

- REMOVE SCREW FROM DRIER AND INSTALL BINARY SWITCH ON DRIER AS SHOWN IN FIGURE 3b.
- LUBRICATE (2) #6 O-RINGS AS SHOWN IN FIGURE 3a, AND INSTALL THE #6 COND/DRIER HARDLINE AS SHOWN IN FIGURE 4 BELOW. TIGHTEN FITTING CONNECTIONS AS SHOWN IN FIGURE 3a ABOVE.

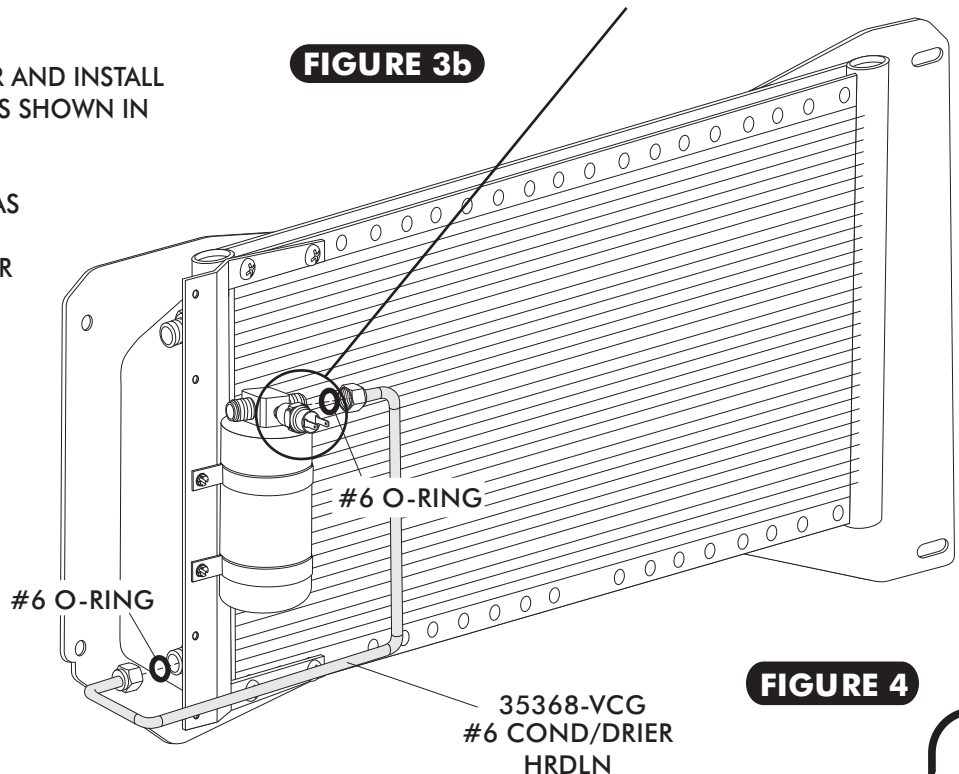


FIGURE 4



HOOD LATCH ASSEMBLY REMOVAL

- REMOVE OEM HOOD LATCH ASSEMBLY AND HARDWARE AS SHOWN BELOW IN FIGURE 5. (RETAIN)

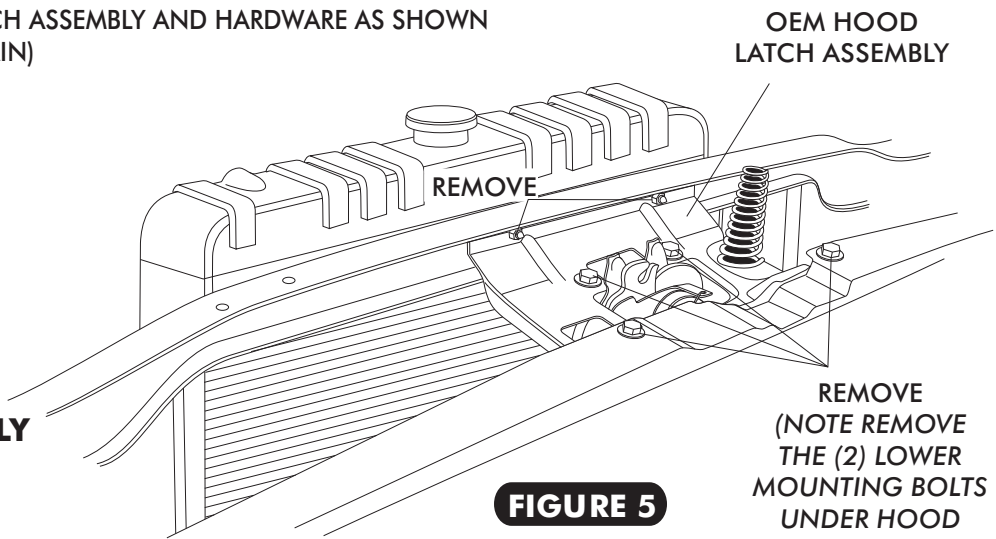


FIGURE 5

CONDENSER ASSEMBLY INSTALLATION

- REMOVE THE (4) RADIATOR MOUNTING BOLTS AND RETAIN.
- LEAN THE RADIATOR TOWARD THE ENGINE
- INSTALL THE CONDENSER ASSEMBLY BETWEEN THE GRILLE AND CORE SUPPORT AS SHOWN IN FIGURE 6 BELOW.
- WITH THE CONDENSER ASSEMBLY BETWEEN THE GRILLE AND THE CORE SUPPORT, SLIDE THE CONDENSER ASSEMBLY TO THE RIGHT AND PASS THE CONDENSER ASSEMBLY THROUGH THE OPENING IN THE CORE SUPPORT BETWEEN THE RADIATOR AND THE CORE SUPPORT.
- WITH THE LEFT SIDE OF THE CONDENSER ASSEMBLY BETWEEN THE RADIATOR AND THE CORE SUPPORT, SLIDE THE CONDENSER ASSEMBLY TO THE LEFT AND PLACE THE RIGHT SIDE THE CONDENSER ASSEMBLY THROUGH THE OPENING IN THE CORE SUPPORT BETWEEN THE RADIATOR AND THE CORE SUPPORT.

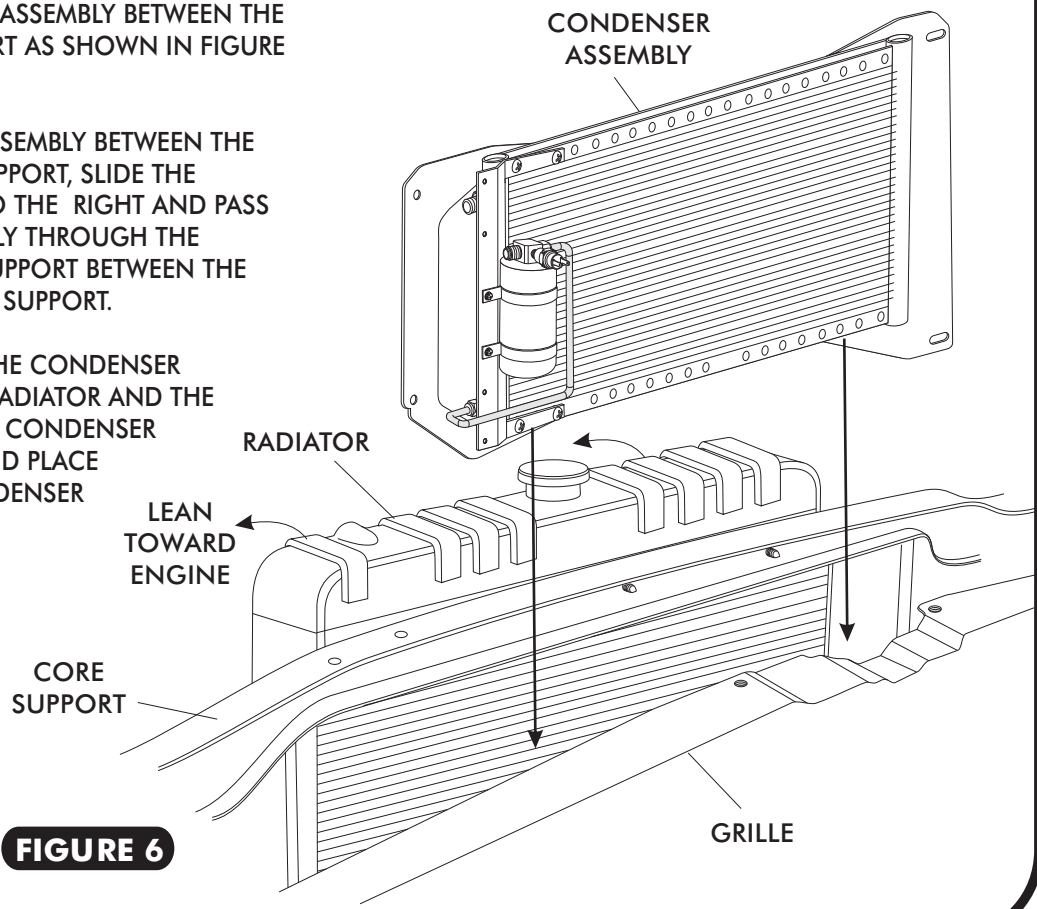


FIGURE 6



CONDENSER ASSEMBLY INSTALLATION CONT.

- USING THE OEM HARDWARE SECURE THE CONDENSER ASSEMBLY BETWEEN THE RADIATOR AND THE CORE SUPPORT SEE FIGURE 7 BELOW

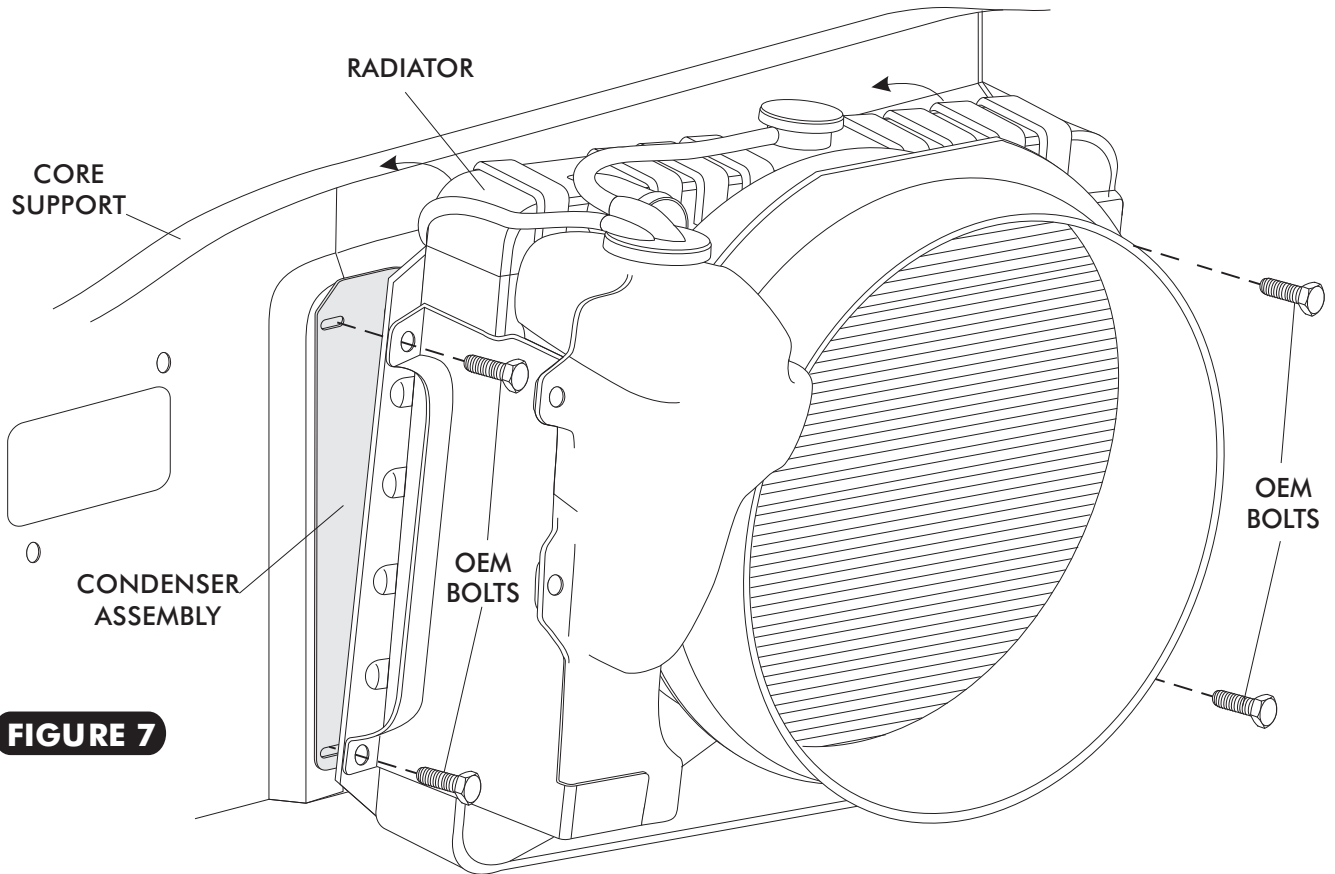


FIGURE 7

- USING THE OEM HARDWARE RE-INSTALL THE HOOD LATCH ASSEMBLY AS SHOWN IN FIGURE 8 BELOW.

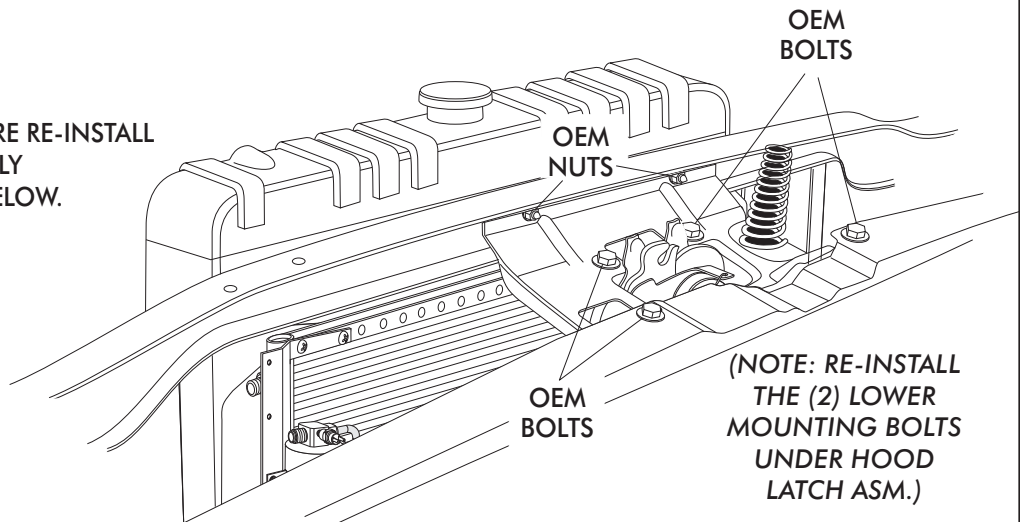


FIGURE 8



1970-74 CHALNGR/CUDA w/AC CONDENSER w/ DRIER

- PLACE (2) ADEL CLAMPS AROUND THE #6 DRIER HARDLINE AND THE #8 CONDENSER HARDLINE AS SHOWN IN FIGURE 9 BELOW.
- LUBRICATE A #6 AND #8 O-RING AS SHOWN IN FIGURE 3A ON PAGE 7. INSTALL THE #6 DRIER HARDLINE AND THE #8 CONDENSER HARDLINE AS SHOWN IN FIGURE 9 BELOW. TIGHTEN FITTING CONNECTIONS AS SHOWN IN FIGURE 3A ON PAGE 7.

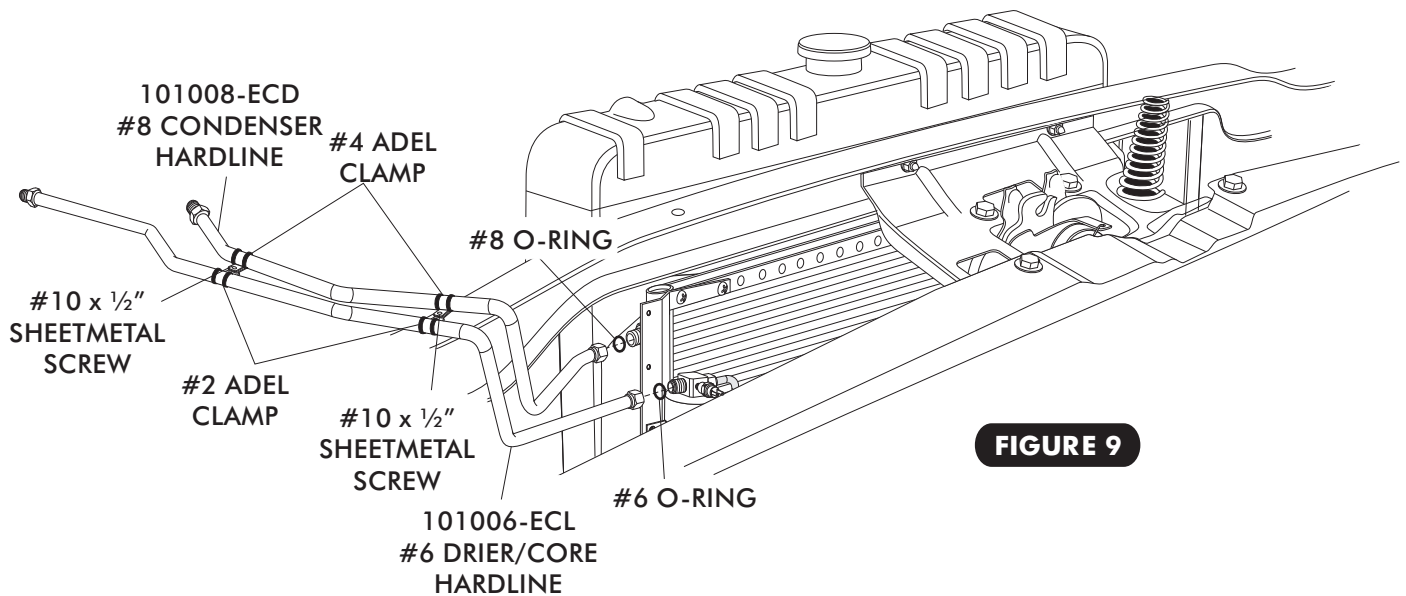


FIGURE 9



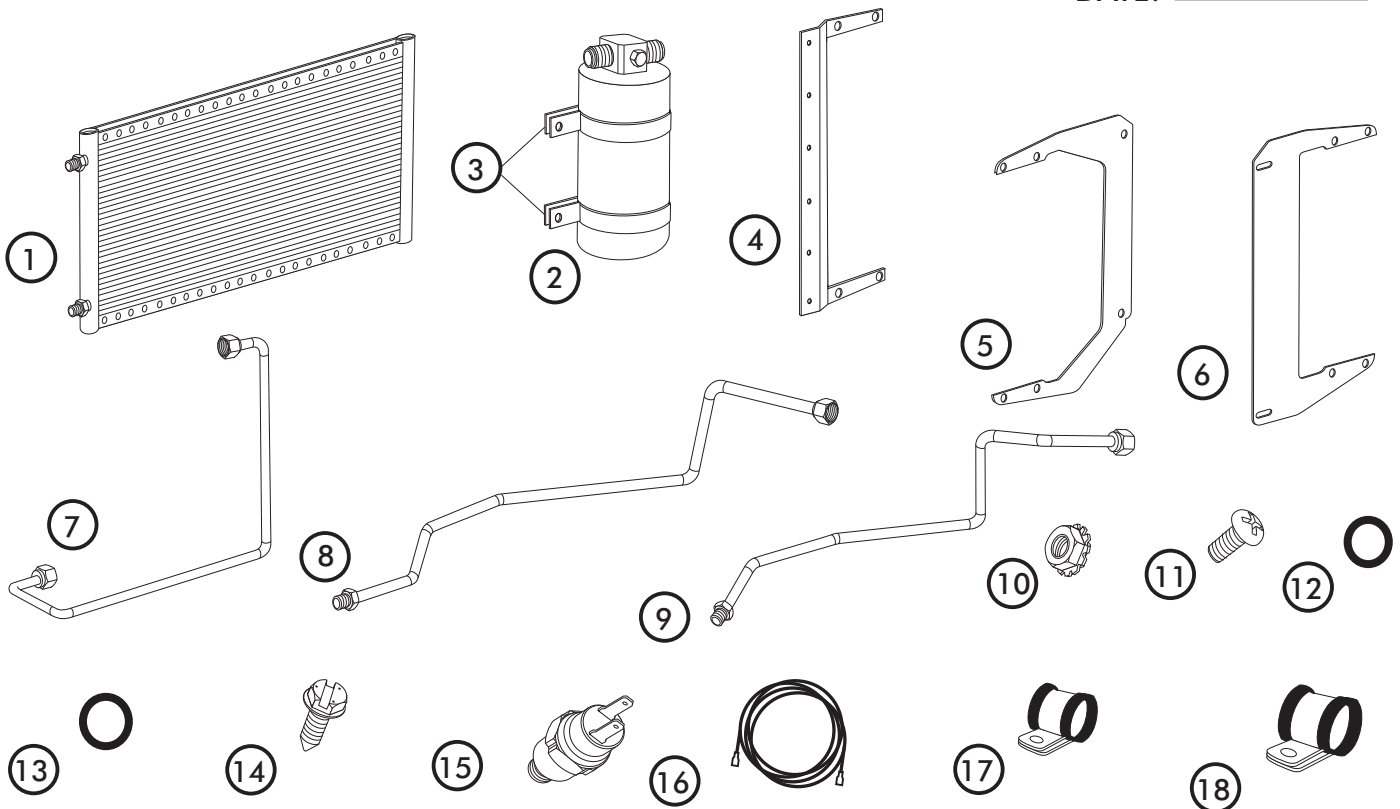
1970-74 CHALNGR/CUDA w/AC CONDENSER w/ DRIER

CONDENSER KIT
051073-EDA

CONDENSER KIT PACKING LIST

No.	QTY.	PART No.	DESCRIPTION
1.	1	03766-VUC	SUPER FLOW CONDENSER 14 x 22
2.	1	07321-VUC	DRIER
3.	2	07113-VUB	DRIER CLAMP
4.	1	65998-VUB	DRIER BRKT
5.	1	646000-PDB	70-74 CHALNGR/CUDA w/ AC DS COND BRKT
6.	1	646001-PDB	70-74 CHALNGR/CUDA w/ AC PS COND BRKT
7.	1	35368-VCG	#6 COND/DRIER HARDLINE
8.	1	101006-ECL	70-74 CHALNGR/CUDA w/ AC #6 DR/CORE HARDLINE
9.	1	101008-ECD	70-74 CHALNGR/CUDA w/ AC #8 COND HARDLINE
10.	12	18260-VUB	10/24 NUT w/ STAR WASHER
11.	12	18249-VUB	10-24 x 3/8" PH PAN HEAD SCREW
12.	3	33857-VUF	#6 O-RING
13.	1	33858-VUF	#8 O-RING
14.	4	18247-VUB	#10 x 1/2" SHEETMETAL SCREW
15.	1	11079-VUS	MALE BINARY SWITCH
16.	1	23135-VUW	COMPRESSOR LEAD
17.	2	31600-VUD	#2 ADEL CLAMP
18.	2	31603-VUD	#4 ADEL CLAMP

CHECKED BY: _____
 PACKED BY: _____
 DATE: _____



**NOTE: IMAGES MAY NOT DEPICT ACTUAL PARTS AND QUANTITIES.
 REFER TO PACKING LIST FOR ACTUAL PARTS AND QUANTITIES.**