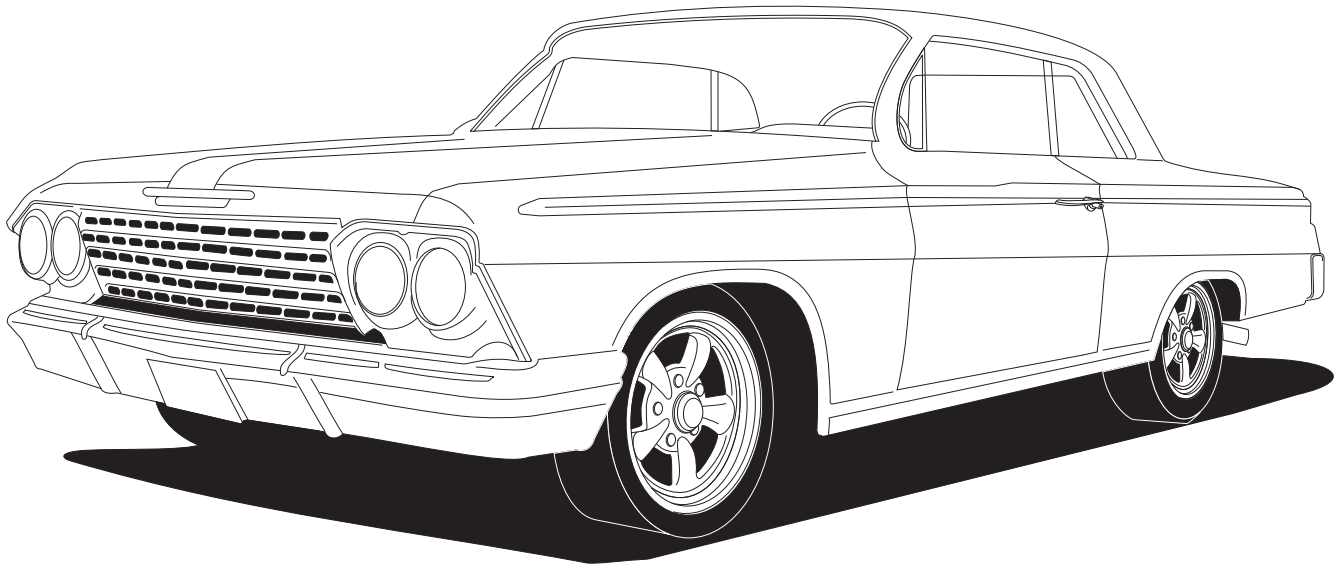




1961-62 IMPALA

CONDENSER w/ DRIER
021062



18865 GOLL ST. - SAN ANTONIO, TX. - 78266 ph.210-654-7171 - fax 210-654-3113



Table of Contents

PAGES

1. COVER
2. TABLE OF CONTENTS
3. PACKING LIST/PARTS DISCLAIMER
4. INFORMATION PAGE
5. CONDENSER BRACKET INSTALLATION
6. DRIER AND MOUNTING BRACKETS INSTALLATIONS
FIGURES 1 & 2
7. DRIER INSTALLATION
FIGURES 3 & 4
8. RADIATOR REMOVAL
FIGURE 5
9. CONDENSER ASSEMBLY INSTALLATION
FIGURES 6 & 7
10. HARDLINE INSTALLATION
FIGURES 8 & 8a
11. CORE SUPPORT TEMPLATE
12. PACKING LIST



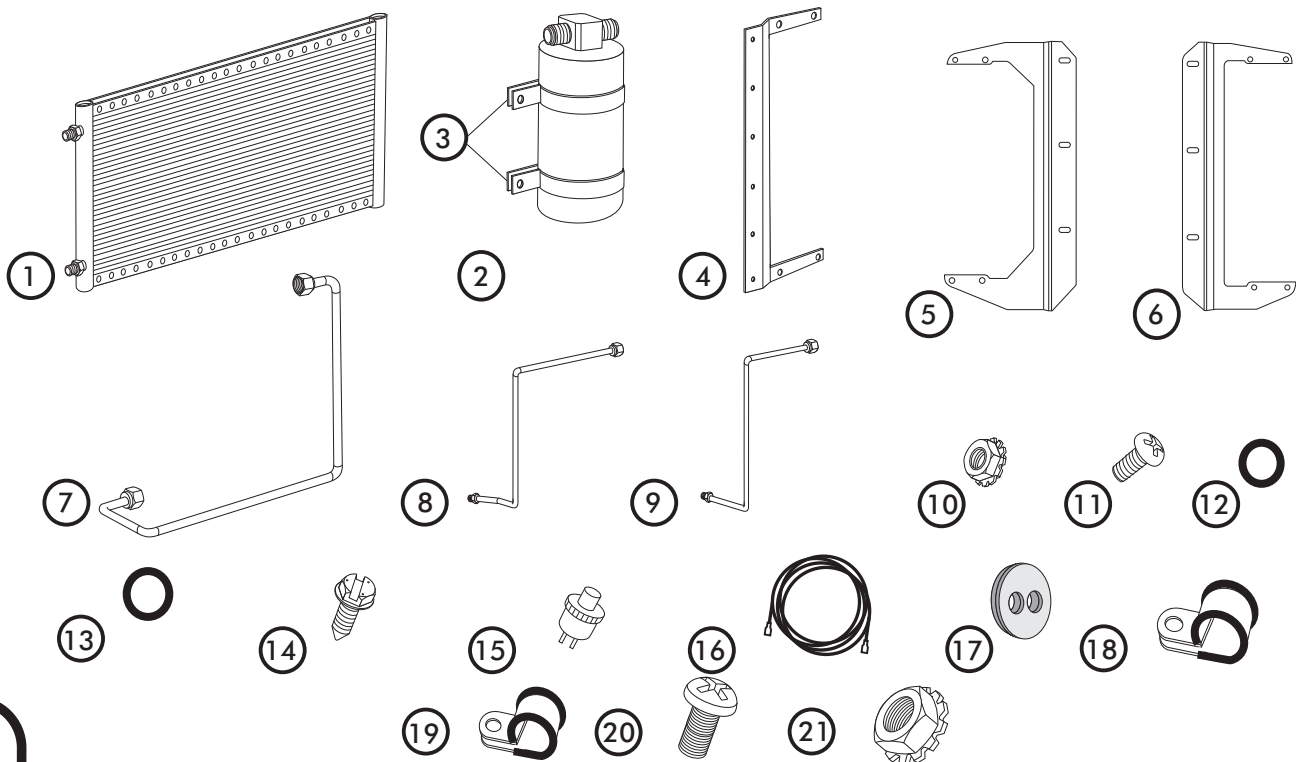
1961-62 IMPALA CONDENSER w/ DRIER

1961-62 IMPALA w/AC CONDENSER w/ DRIER PACKING LIST

**CONDENSER KIT
021062**

No.	QTY.	PART No.	DESCRIPTION
1.	1	03766-VUC	14 x 22 PARALLEL FLOW CONDENSER
2.	1	07321-VUC	DRIER
3.	2	07113-VUB	DRIER CLAMP
4.	1	65998-VUB	UNIVERSAL DRIER BRKT 14 3/4
5.	1	644062	1961-62 IMPALA PS COND BRKT
6.	1	644063	1961-62 IMPALA DS COND BRKT
7.	1	35117-VCG	#6 COND/DRIER HARDLINE
8.	1	091063	1961-62 IMPALA #6 DRIER/CORE HARDLINE
9.	1	091064	1961-62 IMPALA #8 COND HARDLINE
10.	12	18260-VUB	10/24 NUT w/ STAR WASHER
11.	12	18249-VUB	10-24 x 3/8" PH PAN HEAD SCREW
12.	3	33857-VUF	#6 O-RING
13.	1	33858-VUF	#8 O-RING
14.	2	18247-VUB	#10 x 1/2" SHEETMETAL SCREW
15.	1	11079-VUS	MALE BINARY SWITCH
16.	1	23135-VUW	COMPRESSOR LEAD
17.	1	33134-VUI	GROMMET
18.	1	31603-VUD	#4 ADEL CLAMP
19.	1	31600-VUD	#2 ADEL CLAMP
20.	1	18250-VUB	10-32 x 1/2" PH PAN HEAD SCREW
21.	1	18251-VUB	10-32 HEX MS NUT w/ STAR WASHER

**** BEFORE BEGINNING INSTALLATION OPEN ALL PACKAGES AND CHECK CONTENTS OF SHIPMENT. PLEASE REPORT ANY SHORTAGES DIRECTLY TO VINTAGE AIR WITHIN 15 DAYS. AFTER 15 DAYS, VINTAGE AIR WILL NOT BE RESPONSIBLE FOR MISSING OR DAMAGED ITEMS.**

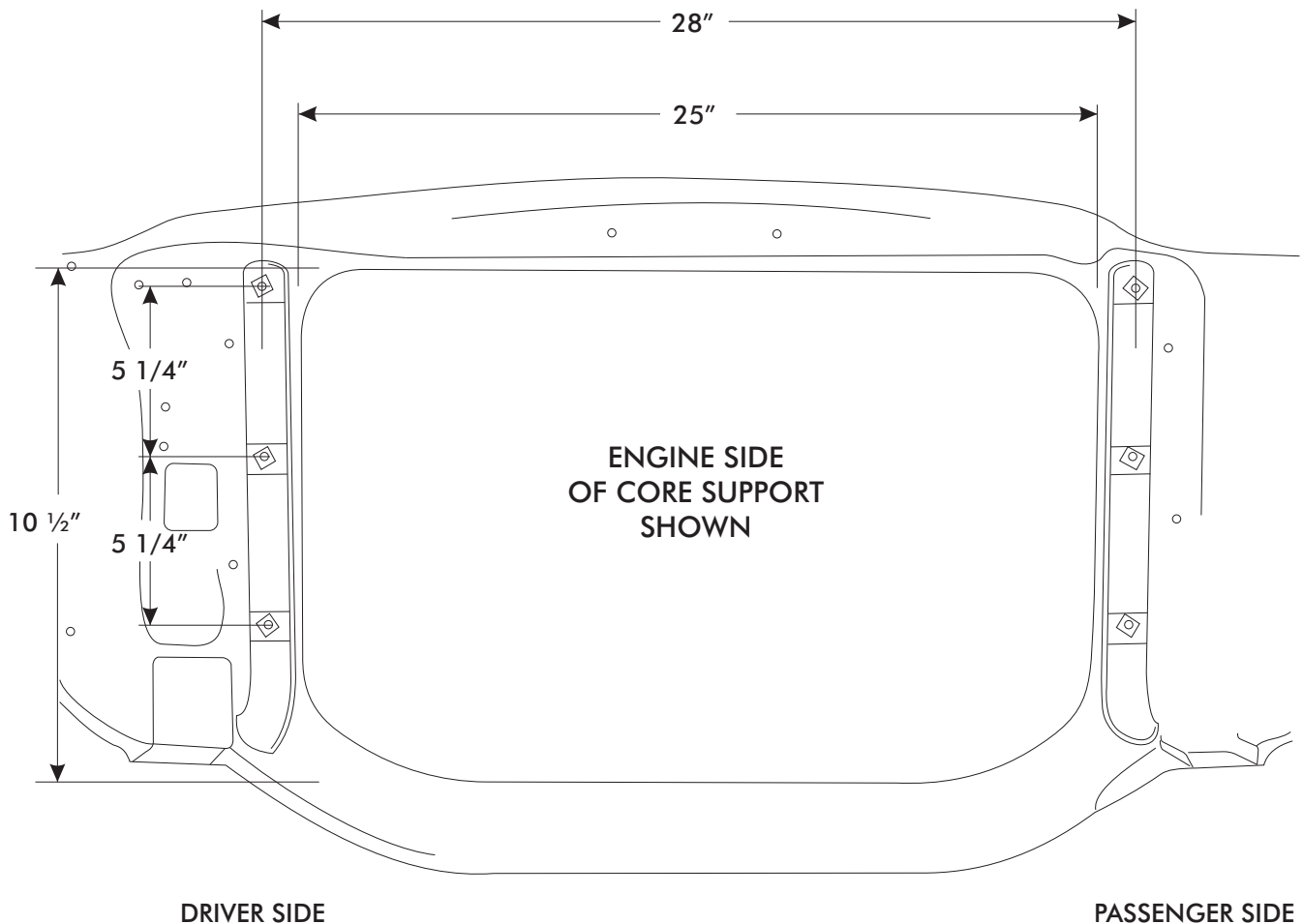




1962 CHEVY IMPALA GEN IV

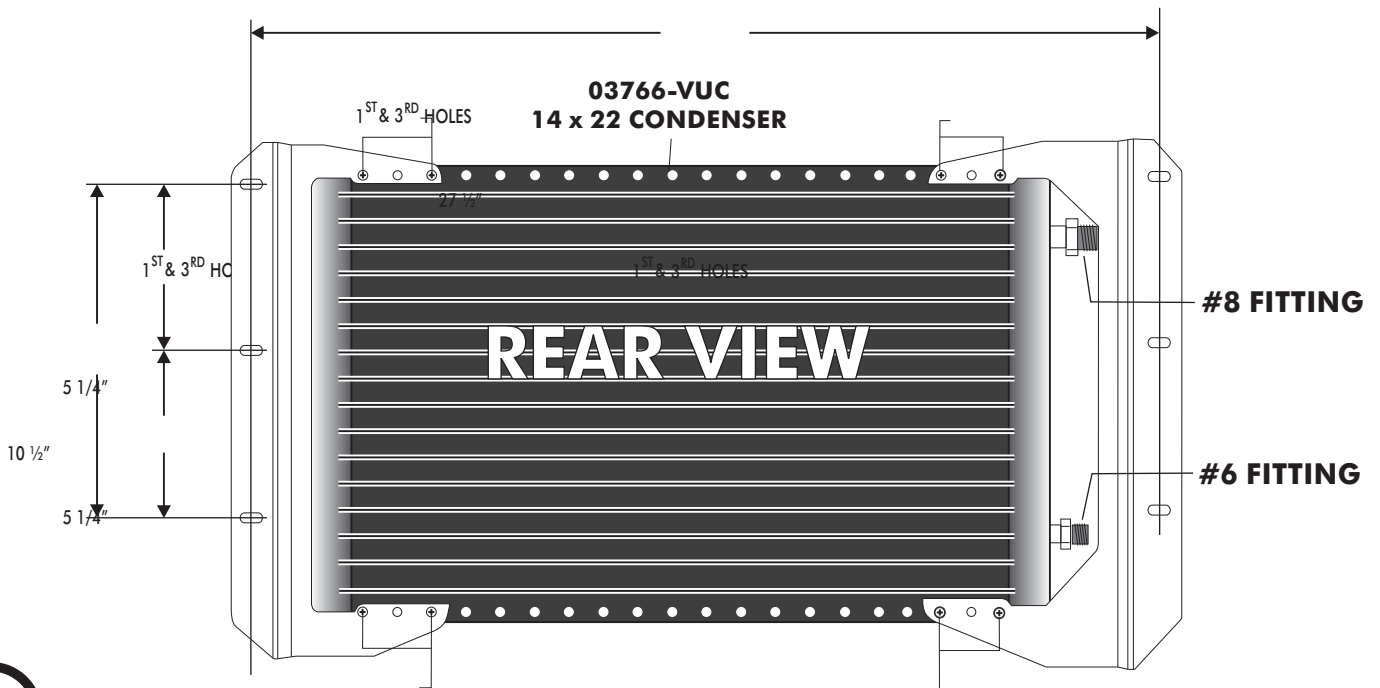
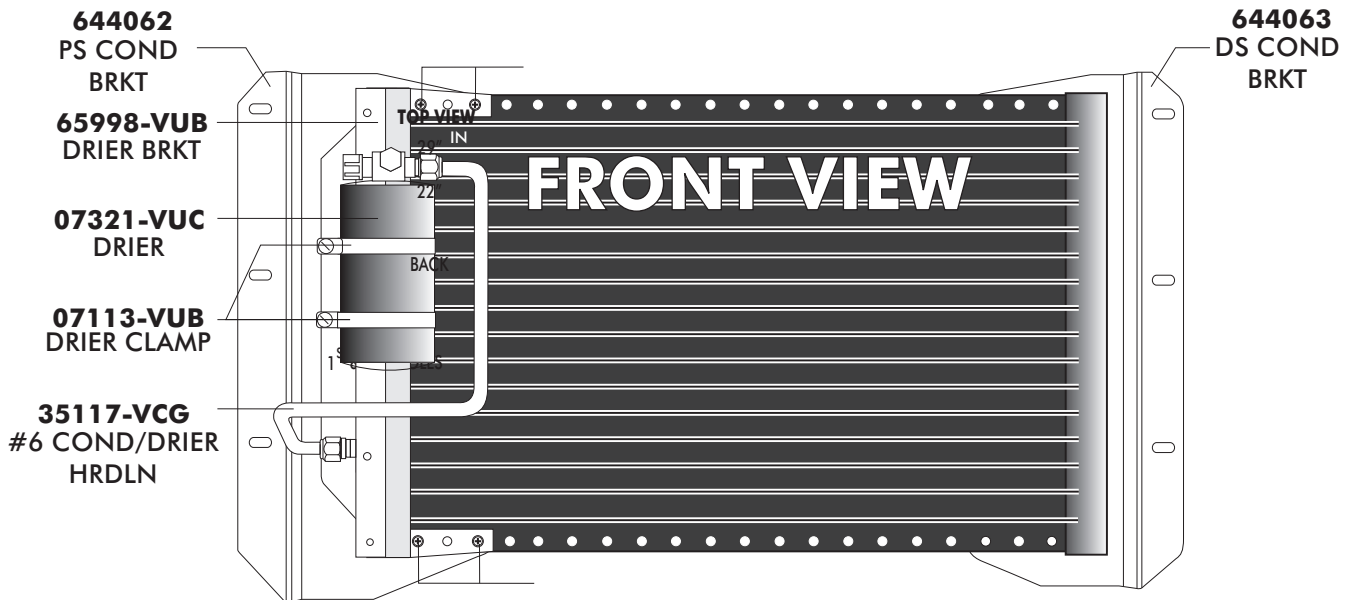
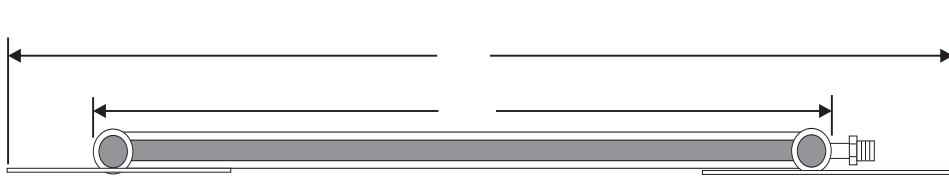
IMPORTANT NOTICE-PLEASE READ

THIS KIT WAS DEVELOPED BASED ON THE MEASUREMENTS BELOW, WHICH WERE TAKEN FROM A 1962 IMPALA w/ FACTORY AIR CORE SUPPORT.





CONDENSER BRACKET INSTALLATION





DRIER BRACKET INSTALLATION

ON A WORK BENCH ASSEMBLE CONDENSER AS FOLLOWS:

- INSTALL DRIER MOUNTING BRACKET ONTO CONDENSER USING (4) 10/24 x 3/8 PAN HEAD SCREWS AND (4) 10/24 NUTS WITH STAR WASHERS. SEE FIGURE 1 BELOW.

NOTE: BRACKETS MOUNT THROUGH THE FIRST AND THIRD HOLES IN THE CONDENSER.

(4) 10/24 NUT w/ STAR WASHER

65998-VUB
DRIER BRKT

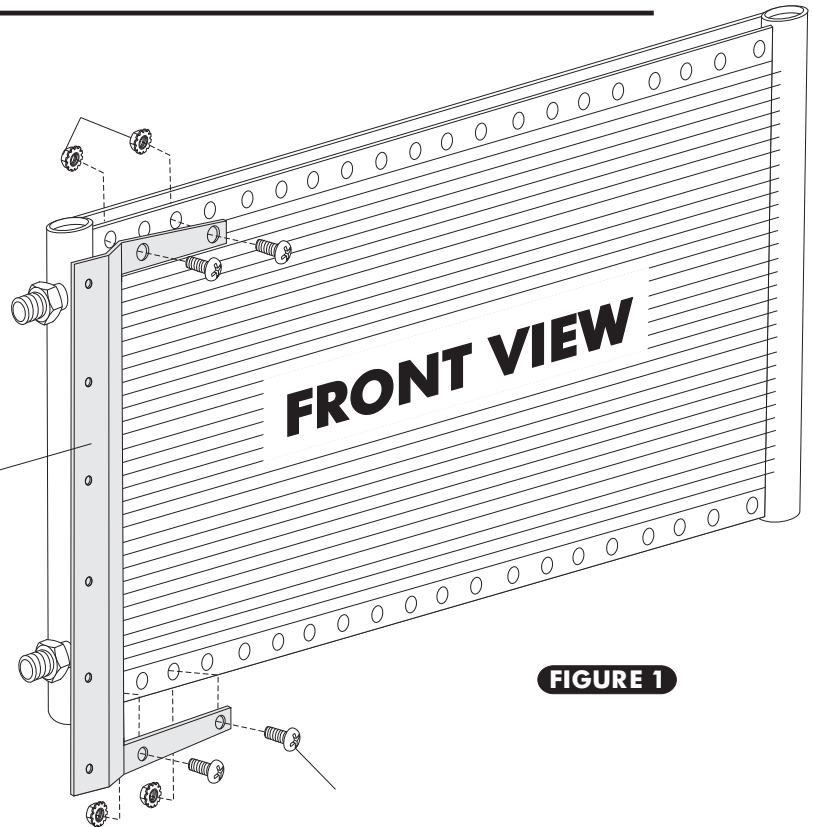


FIGURE 1

MOUNTING BRACKET INSTALLATION

- INSTALL CONDENSER MOUNTING BRACKET ONTO CONDENSER USING (8) 10/24 x 3/8 PAN HEAD SCREWS AND (8) 10/24 NUTS WITH STAR WASHERS. SEE FIGURE 2 BELOW.

NOTE: BRACKETS MOUNT THROUGH THE FIRST AND THIRD HOLE OF THE CONDENSER.

(8) 10/24 NUT w/STAR WASHER

644063
DS CONDENSER
BRKT

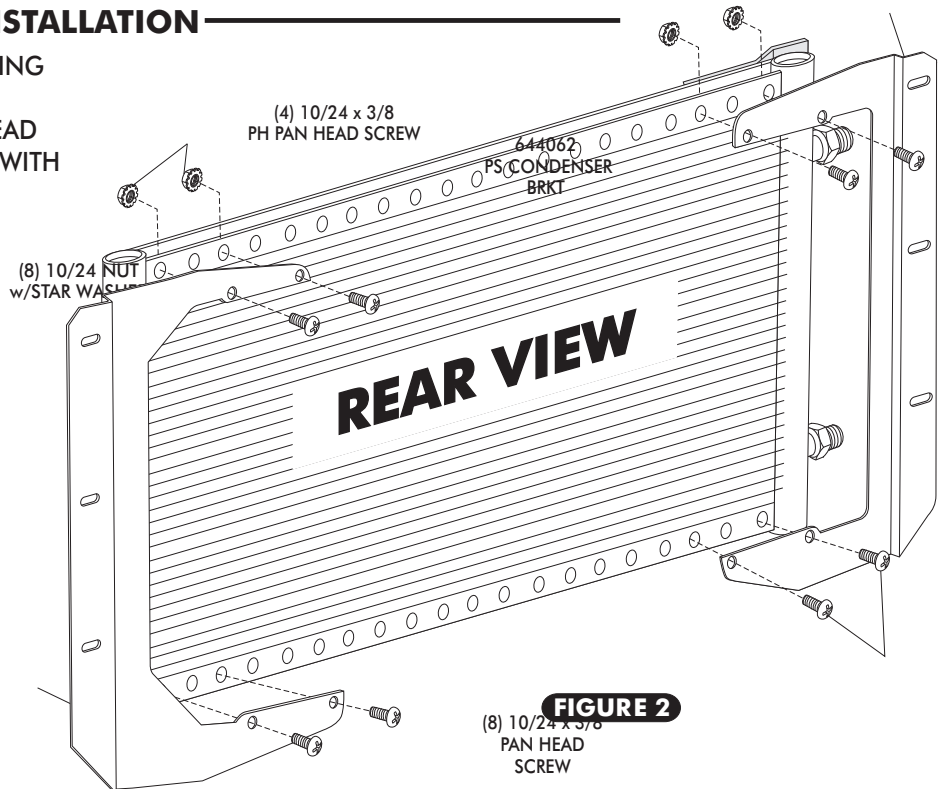


FIGURE 2



DRIER INSTALLATION

- INSTALL DRIER CLAMPS ON DRIER AS SHOWN.
- USING (2) #10 x 1/2" SHEETMETAL SCREWS, INSTALL DRIER ON BRACKET IN THE 4TH AND 6TH HOLES FROM THE BOTTOM OF BRACKET AS SHOWN IN FIGURE 3.

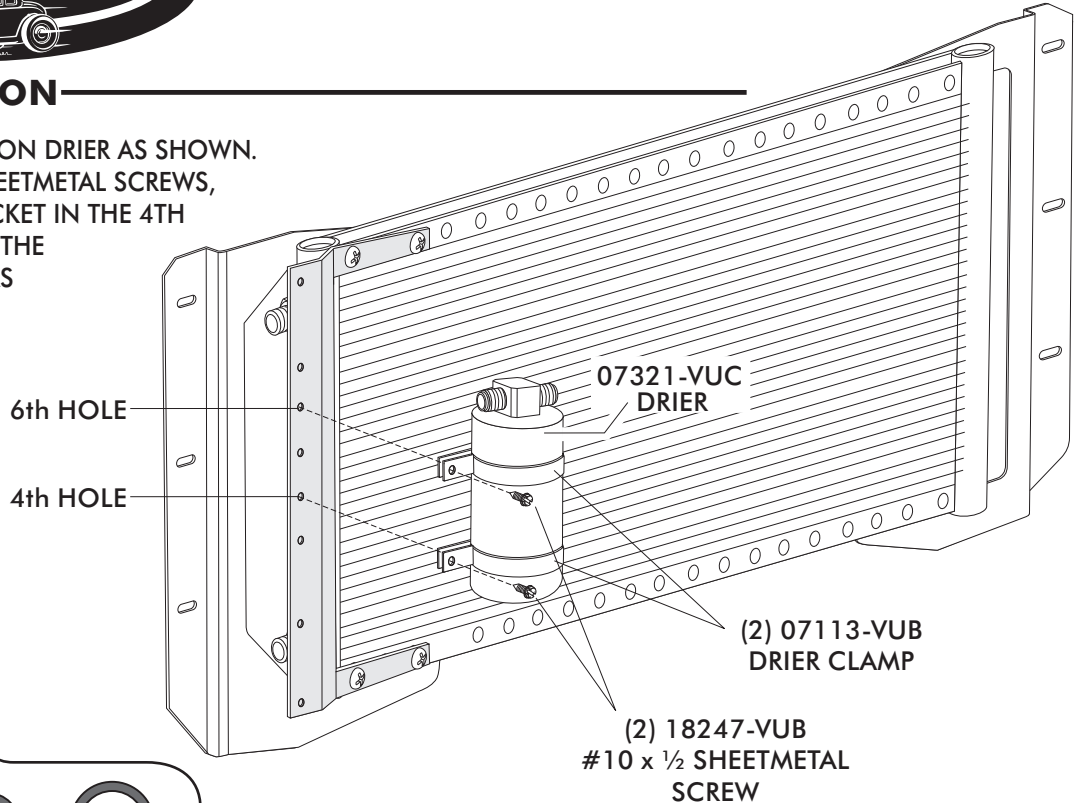
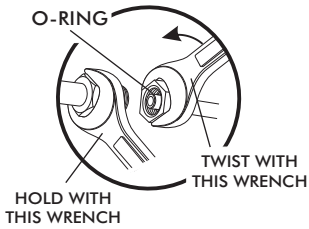


FIGURE 3



FOR A PROPER SEAL OF FITTINGS -INSTALL SUPPLIED O-RINGS AS SHOWN AND LUBRICATE WITH SUPPLIED OIL.

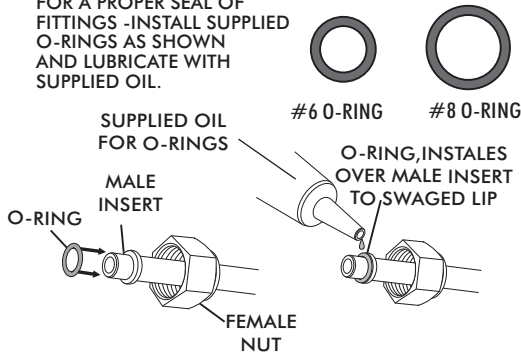


FIGURE 3A

HARDLINE INSTALLATION

- LUBRICATE (2) #6 O-RINGS SEE FIGURE 3a ABOVE, AND INSTALL THE #6 DRIER/COND HARDLINE AS SHOWN IN FIGURE 4 BELOW. TIGHTEN FITTINGS AS SHOWN IN FIGURE 3a ABOVE.

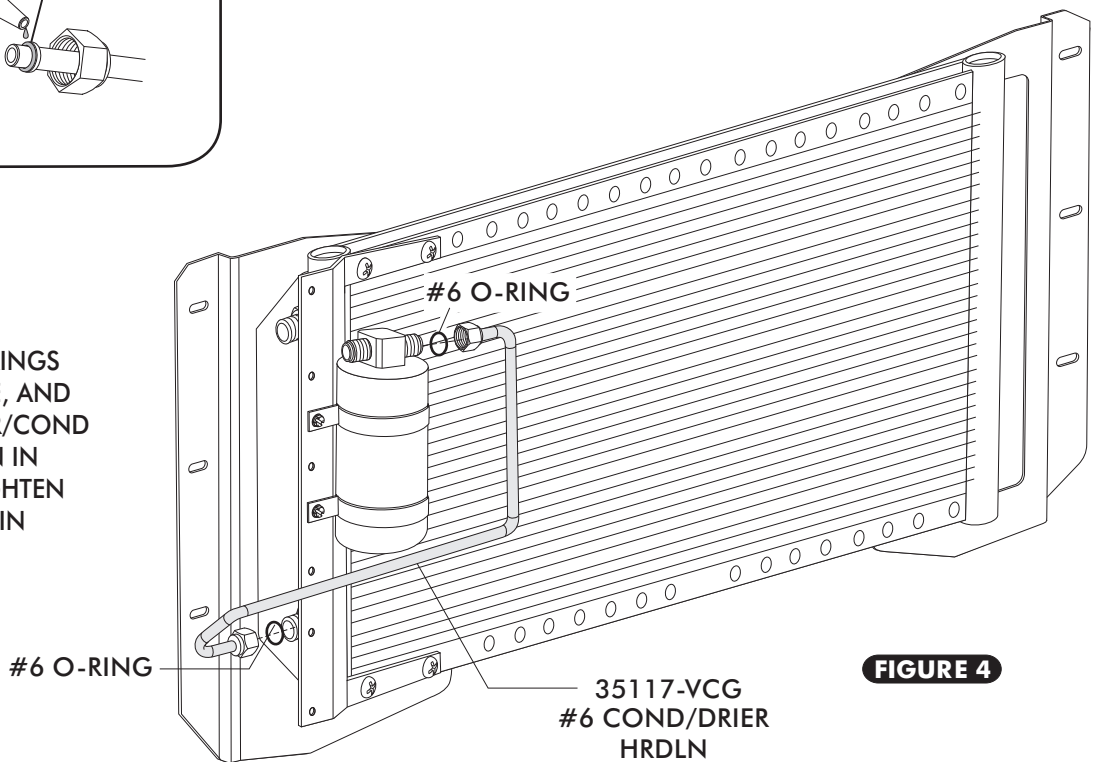


FIGURE 4



RADIATOR REMOVAL

- DRAIN RADIATOR REMOVE UPPER AND LOWER RADIATOR HOSES REMOVE RADIATOR.

CORE SUPPORT MODIFICATION

- USING TEMPLATE PROVIDED ON PG. 11 CUT OUT TEMPLATE AND PLACE ON BACK SIDE OF CORE SUPPORT AS SHOWN UNDER BATTERY BELOW AND MARK HOLE LOCATION.
- USING A 1 1/4" HOLE SAW, DRILL HOLE IN CORE SUPPORT . (SEE FIGURE 5 BELOW)

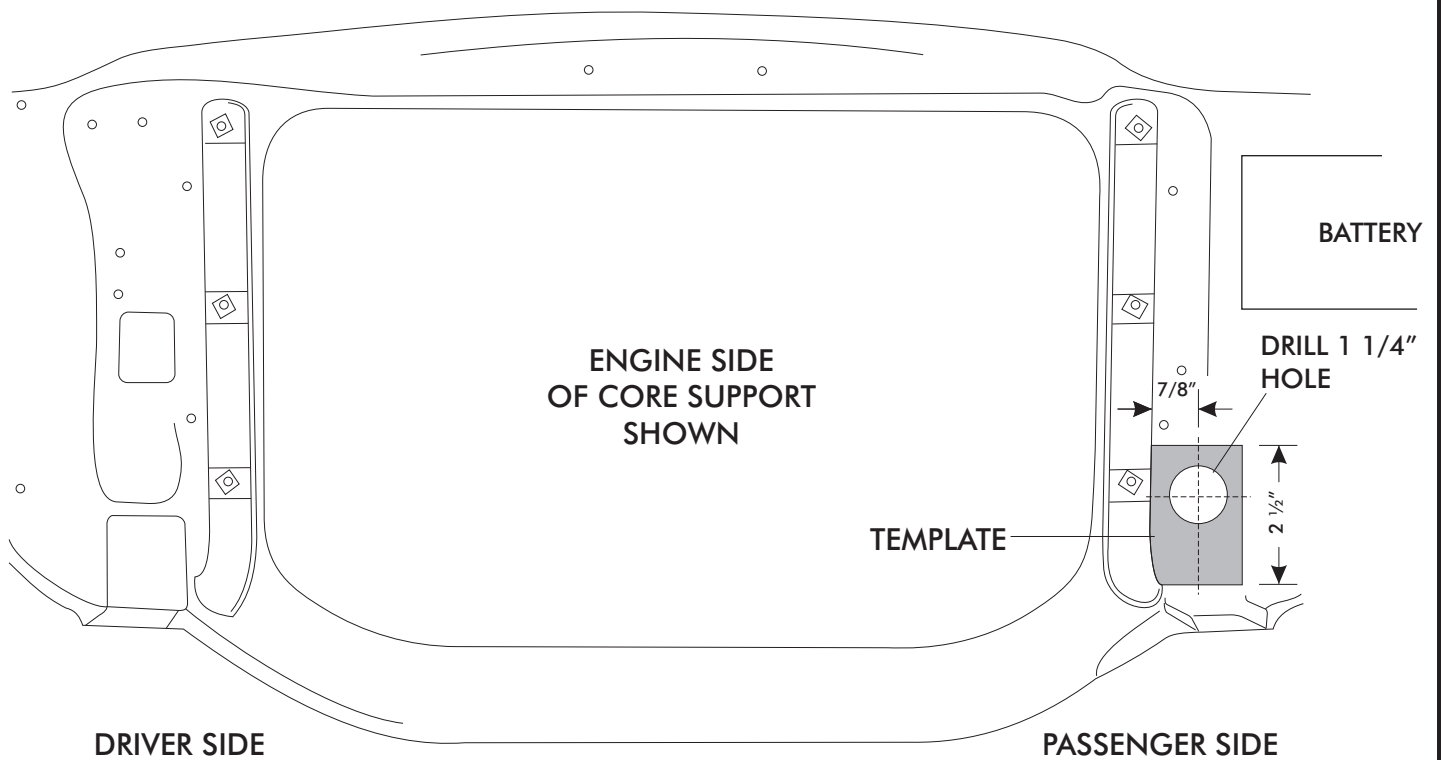
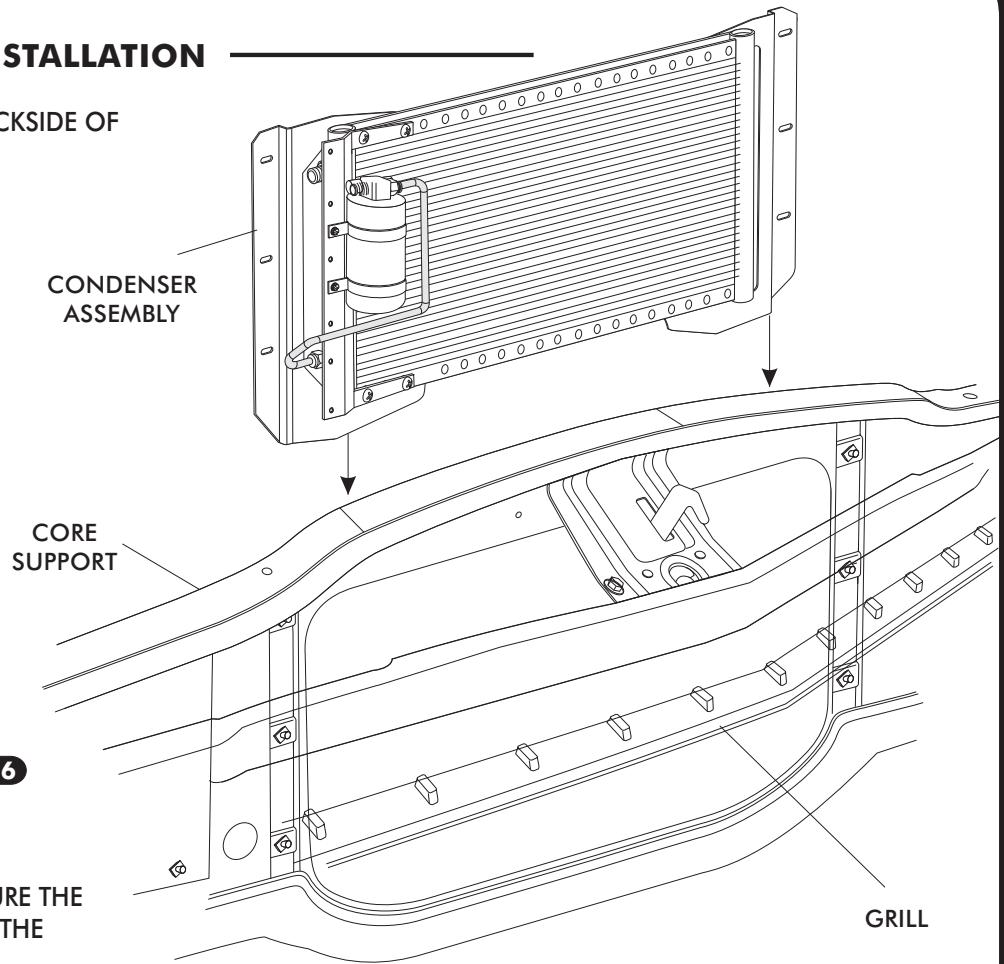


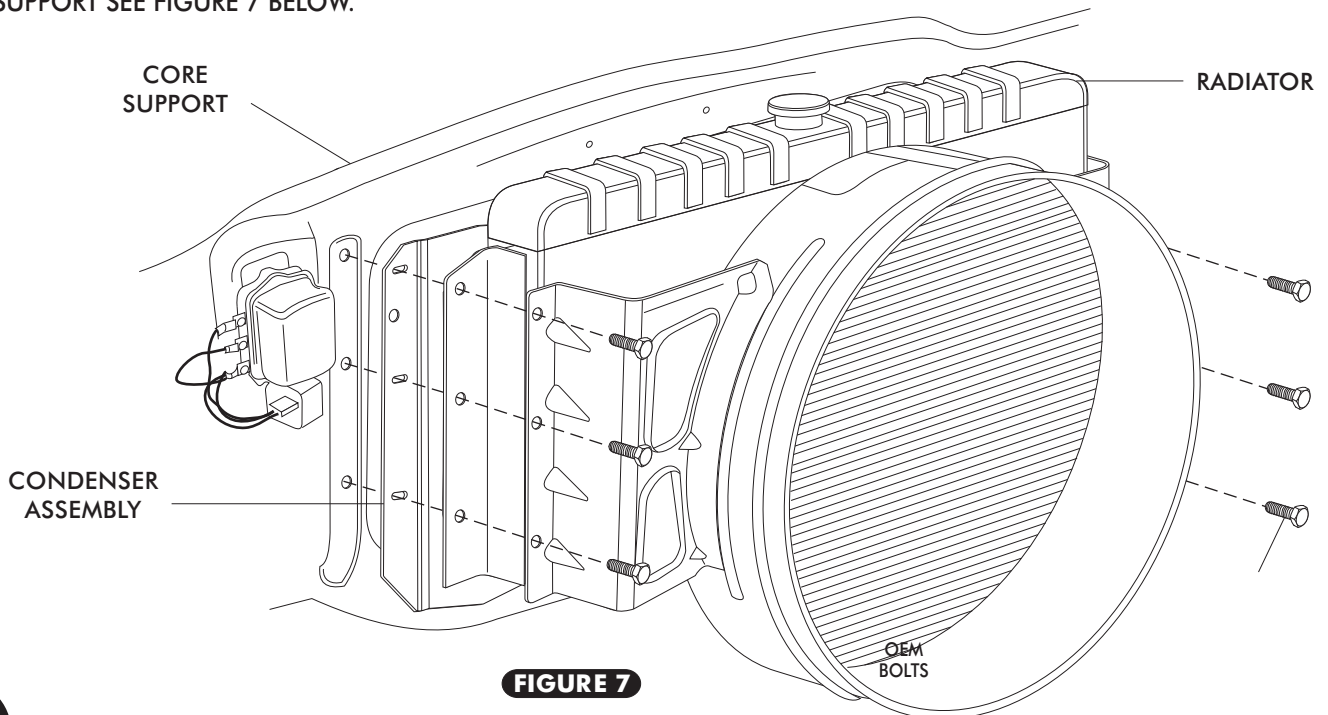
FIGURE 5

CONDENSER ASSEMBLY INSTALLATION

- INSTALL CONDENSER ON THE BACKSIDE OF THE CORE SUPPORT AS SHOWN IN FIGURE 6 BELOW



- USING THE OEM HARDWARE SECURE THE CONDENSER ASSEMBLY BETWEEN THE RADIATOR AND THE CORE SUPPORT SEE FIGURE 7 BELOW.



HARDLINE INSTALLATION CONT.

- INSTALL GROMMET IN CORE SUPPORT
- LUBRICATE A #6 AND #8 O-RING AS SHOWN IN FIGURE 3A ON PAGE 7. INSTALL THE #6 DRIER HARDLINE AND THE #8 CONDENSER HARDLINE AS SHOWN IN FIGURE 8 BELOW. TIGHTEN FITTINGS AS SHOWN IN FIGURE 3A ON PAGE 7.
- INSTALL (2) ADEL CLAMPS AS SHOWN IN FIGURE 8.

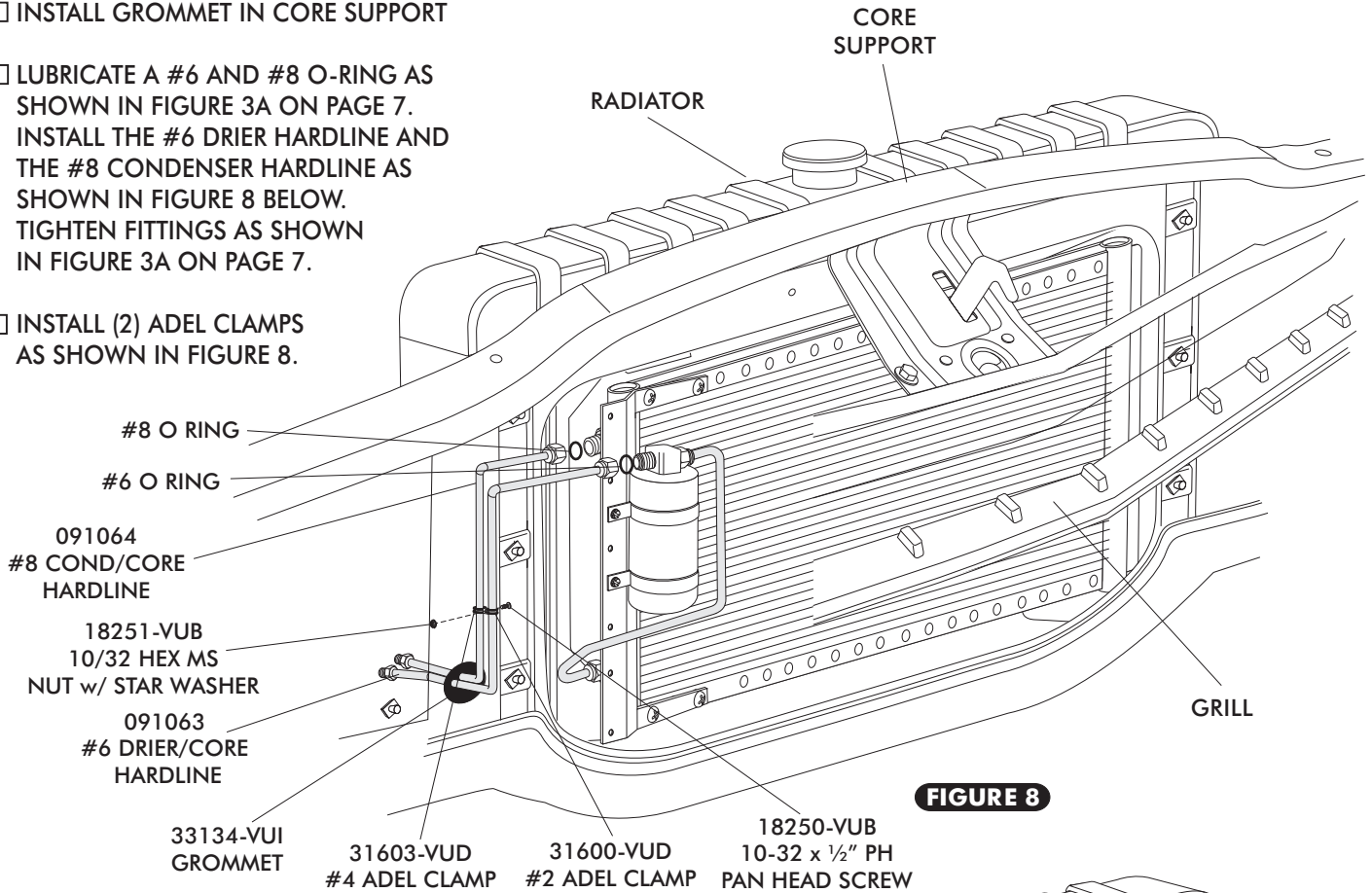


FIGURE 8

BINARY SWITCH INSTALLATION

- INSTALL BIANRY SWITCH ON DRIER AS SHOWN IN FIGURE 8a

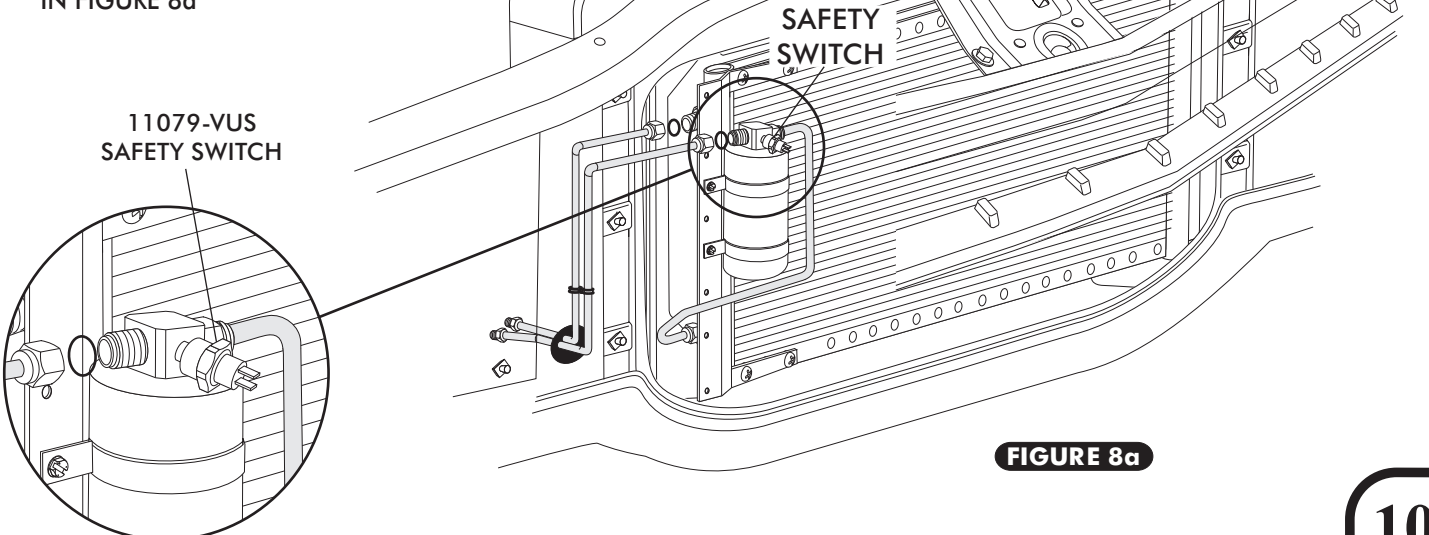
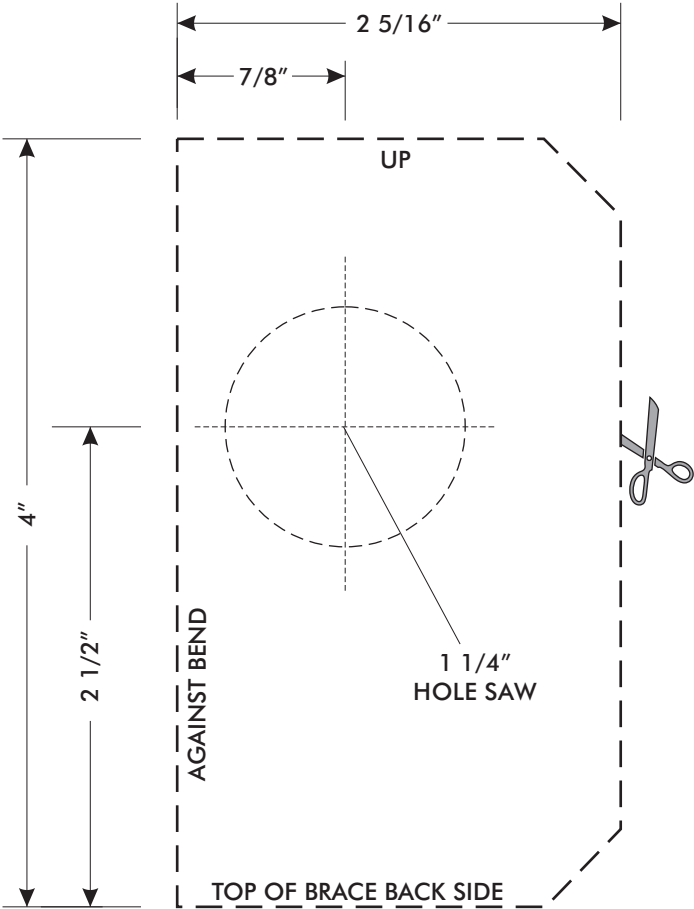


FIGURE 8a



CORE SUPPORT TEMPLATE





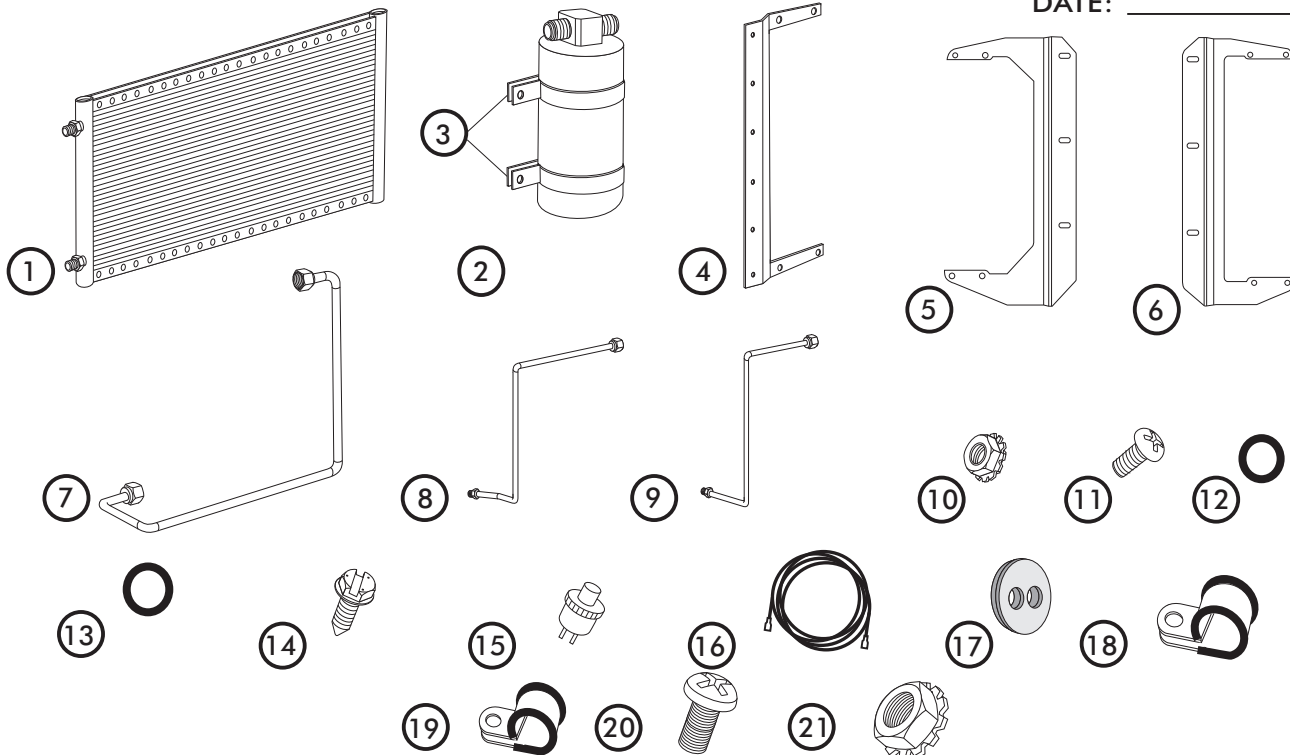
1961-62 IMPALA CONDENSER w/ DRIER

1961-62 IMPALA w/AC CONDENSER w/ DRIER PACKING LIST

CONDENSER KIT
021062

No.	QTY.	PART No.	DESCRIPTION
1.	1	03766-VUC	14 x 22 PARALLEL FLOW CONDENSER
2.	1	07321-VUC	DRIER
3.	2	07113-VUB	DRIER CLAMP
4.	1	65998-VUB	UNIVERSAL DRIER BRKT 14 3/4
5.	1	644062	1961-62 IMPALA PS COND BRKT
6.	1	644063	1961-62 IMPALA DS COND BRKT
7.	1	35117-VCG	#6 COND/DRIER HARDLINE
8.	1	091063	1961-62 IMPALA #6 DRIER/CORE HARDLINE
9.	1	091064	1961-62 IMPALA #8 COND HARDLINE
10.	12	18260-VUB	10/24 NUT w/ STAR WASHER
11.	12	18249-VUB	10-24 x 3/8" PH PAN HEAD SCREW
12.	3	33857-VUF	#6 O-RING
13.	1	33858-VUF	#8 O-RING
14.	2	18247-VUB	#10 x 1/2" SHEETMETAL SCREW
15.	1	11079-VUS	MALE BINARY SWITCH
16.	1	23135-VUW	COMPRESSOR LEAD
17.	1	33134-VUI	GROMMET
18.	1	31603-VUD	#4 ADEL CLAMP
19.	1	31600-VUD	#2 ADEL CLAMP
20.	1	18250-VUB	10-32 x 1/2" PH PAN HEAD SCREW
21.	1	18251-VUB	10-32 HEX MS NUT w/ STAR WASHER

CHECKED BY: _____
 PACKED BY: _____
 DATE: _____



**NOTE: IMAGES MAY NOT DEPICT ACTUAL PARTS AND QUANTITIES.
 REFER TO PACKING LIST FOR ACTUAL PARTS AND QUANTITIES.**