

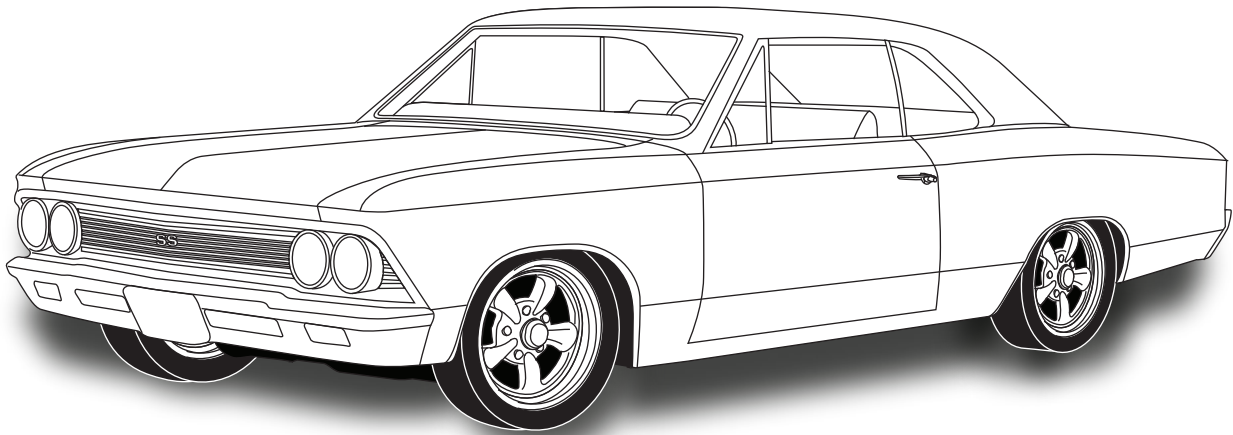


an ISO 9001:2000 Registered Company

1964-67 CHEVELLE

w/wo AC CONDENSER w/ DRIER

021166



18865 GOLL ST. - SAN ANTONIO, TX. - 78266 ph.210-654-7171 - fax 210-654-3113



Table of Contents

PAGES

1. COVER
2. TABLE OF CONTENTS
3. PACKING LIST/PARTS DISCLAIMER
4. INFORMATION PAGE
5. CONDENSER BRACKET INSTALLATION
FIGURE 1 & 2
6. RADIATOR REMOVAL/HOOD LATCH ASSEMBLY/CONDENSER
INSTALLATION FIGURE 3 & 4
7. CONDENSER INSTALLATION CONT
FIGURES 5 & 6
8. DRIER/SAFETY SWITCH INSTALLATION
FIGURES 7 & 8
9. HARDLINE INSTALLATION
FIGURES 9 & 10
10. PACKING LIST

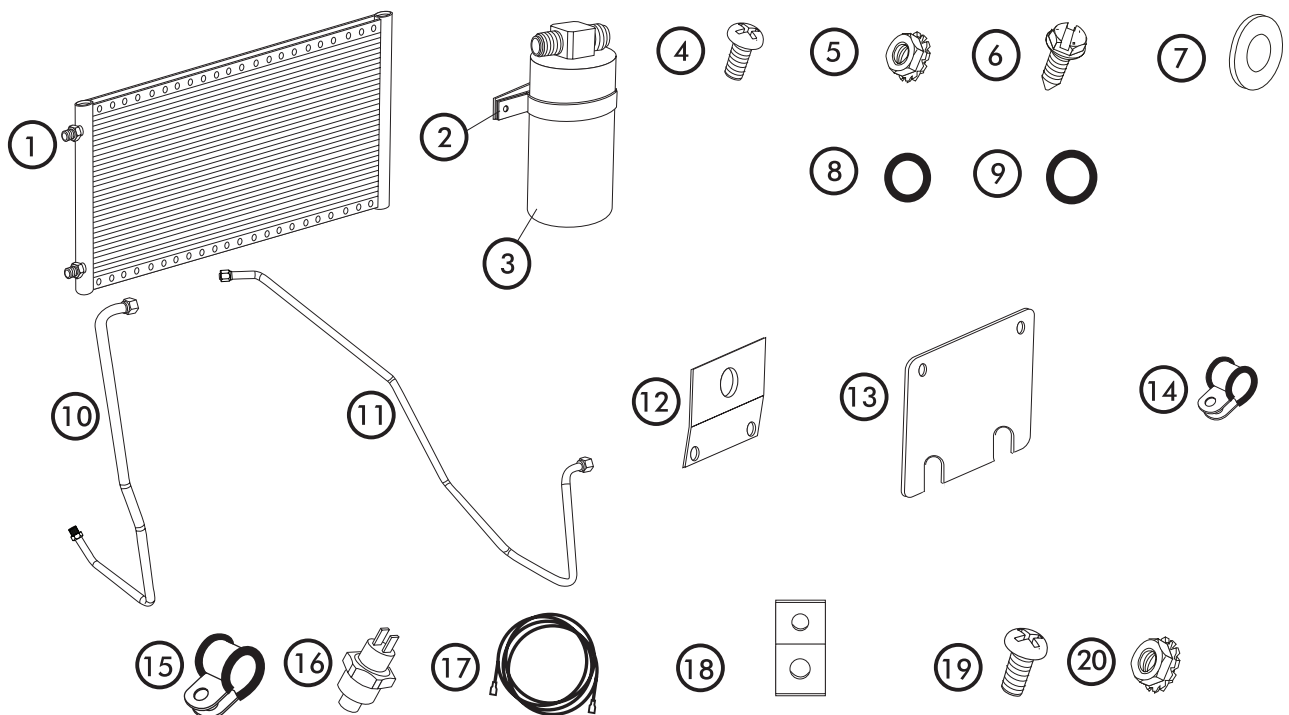


1964-67 CHEVELLE w/wo AC CONDENSER W/DRIER

CONDENSER KIT 021166

No.	QTY.	PART No.	DESCRIPTION
1.	1	03767-VUC	14" X 24" PARALLEL FLOW COND.
2.	1	65980-VCB	DRIER CLAMP
3.	1	07321-VUC	DRIER
4.	6	18249-VUB	10/24" X 3/8" PAN HEAD
5.	6	18260-VUB	10/24" NUT w/STAR WASHER
6.	1	18266-VUB	#14 x 3/4 SHEETMETAL SCREW
7.	1	18611-VUB	5/16" FLAT WASHER
8.	2	33857-VUF	#6 O'RING
9.	1	33858-VUF	#8 O'RING
10.	1	091167	64-67 CHEVELLE PS #8 COND/COMP HARDLINE
11.	1	091166	64-67 CHEVELLE #6 DRIER/COND HARDLINE
12.	2	64197-VCB	64-67 CHEVELLE TOP COND BRKT
13.	1	643057	64-67 CHEVELLE BOTTOM COND BRKT
14.	2	31600-VUD	#2 RUBBER ADEL CLAMP
15.	1	31603-VUD	#4 RUBBER ADEL CLAMP
16.	1	11079-VUS	MALE BINARY SWITCH
17.	1	23135-VUW	COMPRESSOR LEAD
18.	1	64359-VCB	HARDLINE BRKT
19.	2	18250-VUB	10/32 X 1/2 PH PAN HEAD SCREW
20.	2	18251-VUB	10/32 NUT W/STARWASHER

**** BEFORE BEGINNING INSTALLATION OPEN ALL PACKAGES AND CHECK CONTENTS OF SHIPMENT. PLEASE REPORT ANY SHORTAGES DIRECTLY TO VINTAGE AIR WITHIN 15 DAYS. AFTER 15 DAYS, VINTAGE AIR WILL NOT BE RESPONSIBLE FOR MISSING OR DAMAGED ITEMS.**



NOTE: IMAGES MAY NOT DEPICT ACTUAL PARTS AND QUANTITIES. REFER TO PACKING LIST FOR ACTUAL PARTS AND QUANTITIES

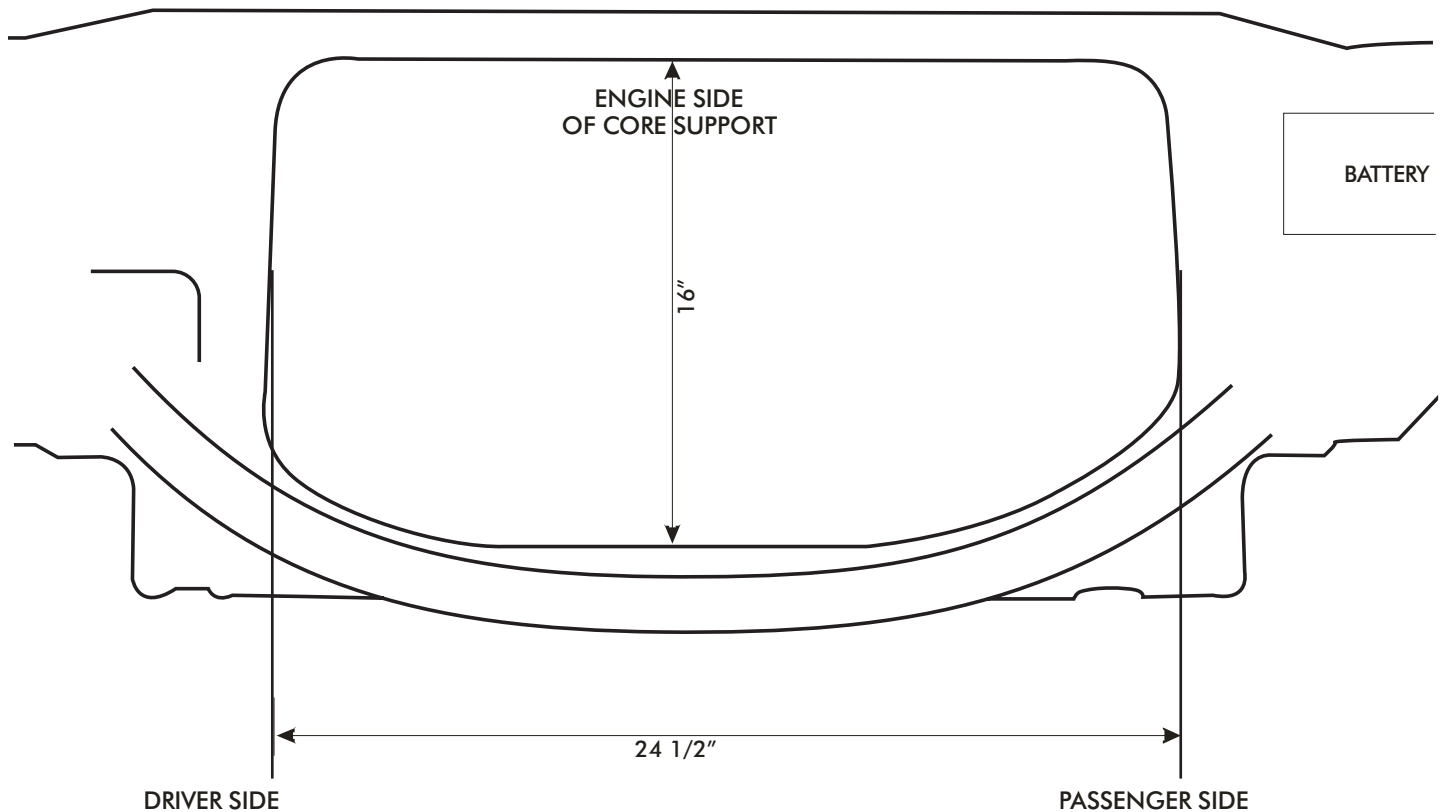


1964-67 CHEVELLE w/wo AC CONDENSER W/DRIER

1964-67 CHEVELLE

IMPORTANT NOTICE-PLEASE READ

THIS KIT WAS DEVELOPED BASED ON THE MEASUREMENTS BELOW, WHICH WERE TAKEN FROM A 1967 CHEVELLE w/ FACTORY AIR CORE SUPPORT.





CONDENSER BRACKET INSTALLATION

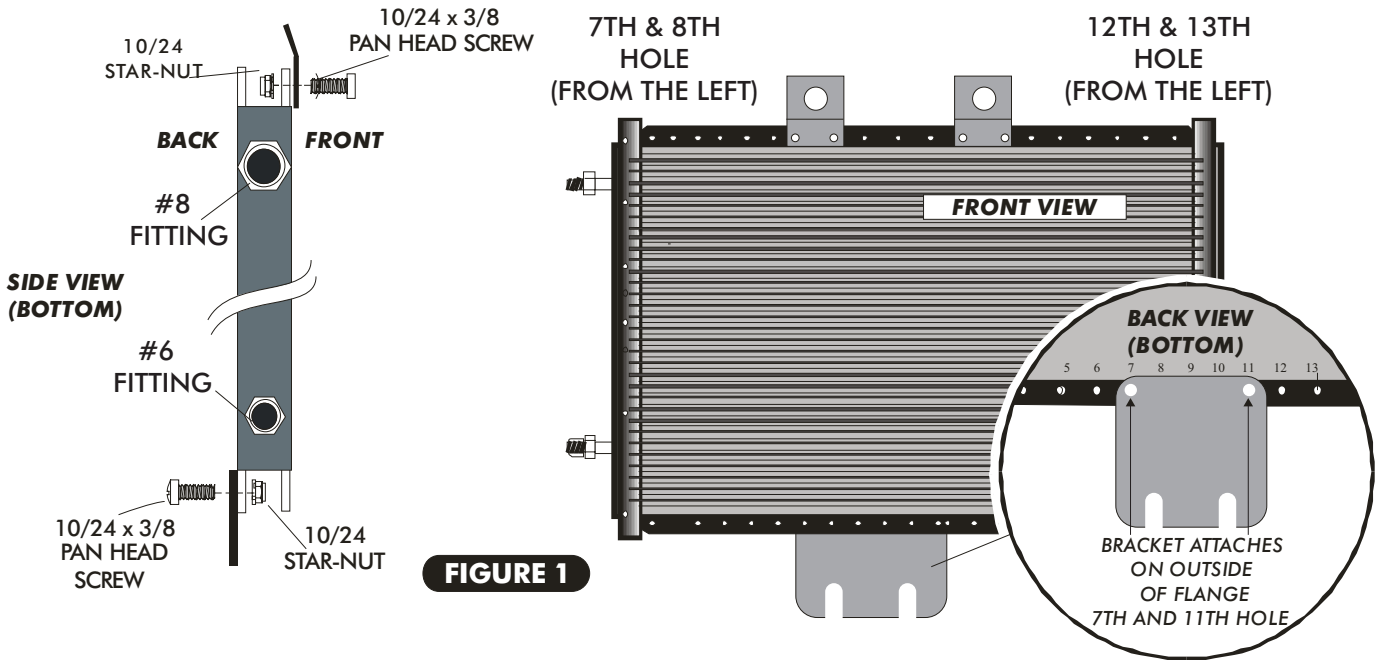


FIGURE 1

MOUNTING BRACKET INSTALLATION

- INSTALL TOP MOUNTING BRACKETS ON TO CONDENSER USING (4) 10/24 X 3/8 PAN HEAD SCREWS AND (4) 10/24NUTS WITH STAR WASHERS. SEE FIGURE 2 BELOW. **NOTE BRACKETS MOUNT THROUGH THE 7TH & 8TH AND 12TH & 13TH HOLE FROM THE LEFT SIDE OF THE CONDENSER.**
- INSTALL BOTTOM MOUNTING BRACKET ON TO CONDENSER USING (2) 10/24 X 3/8 PAN HEAD SCREWS AND (2) 10/24 NUTS WITH STAR WASHERS. SEE FIGURE 2 BELOW. **NOTE BRACKET MOUNTS THROUGH THE 7TH & 11TH HOLE FROM THE RIGHT SIDE OF THE CONDENSER (BACK VIEW).**

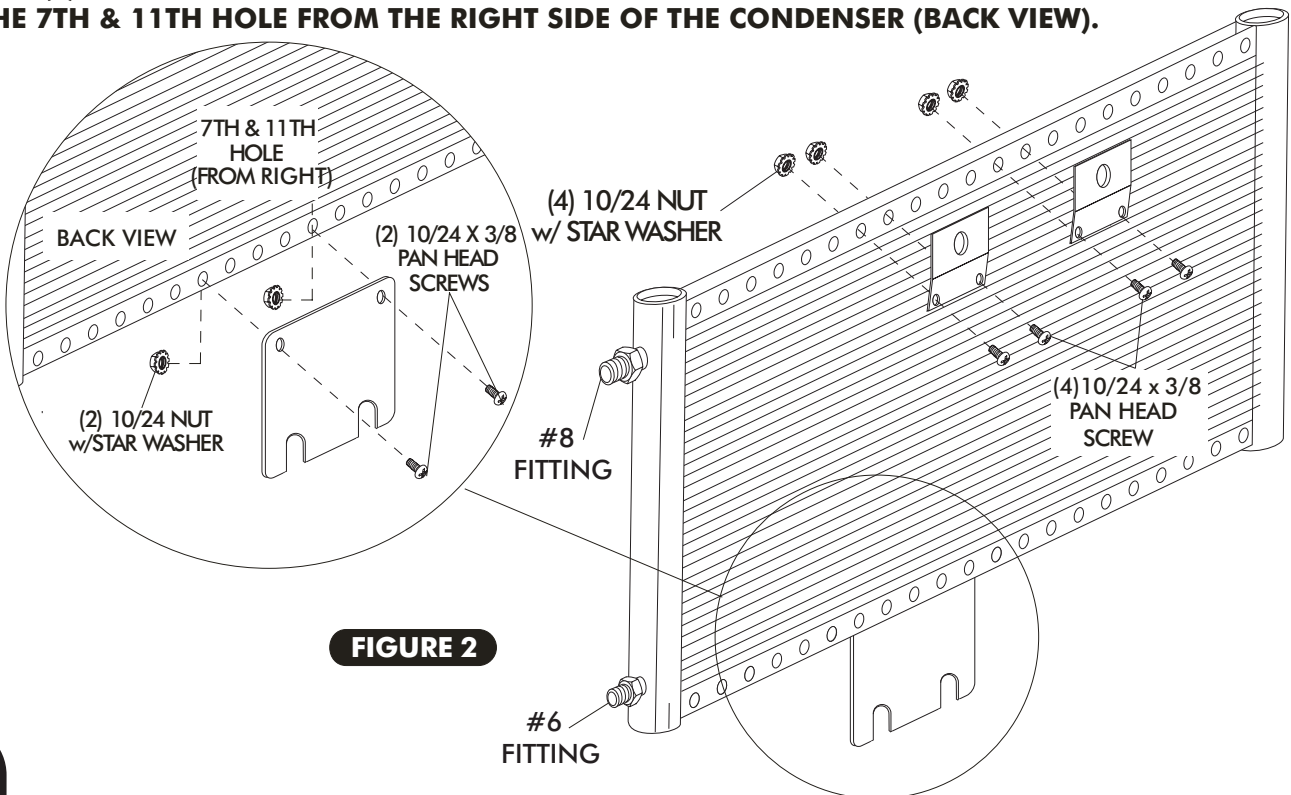


FIGURE 2

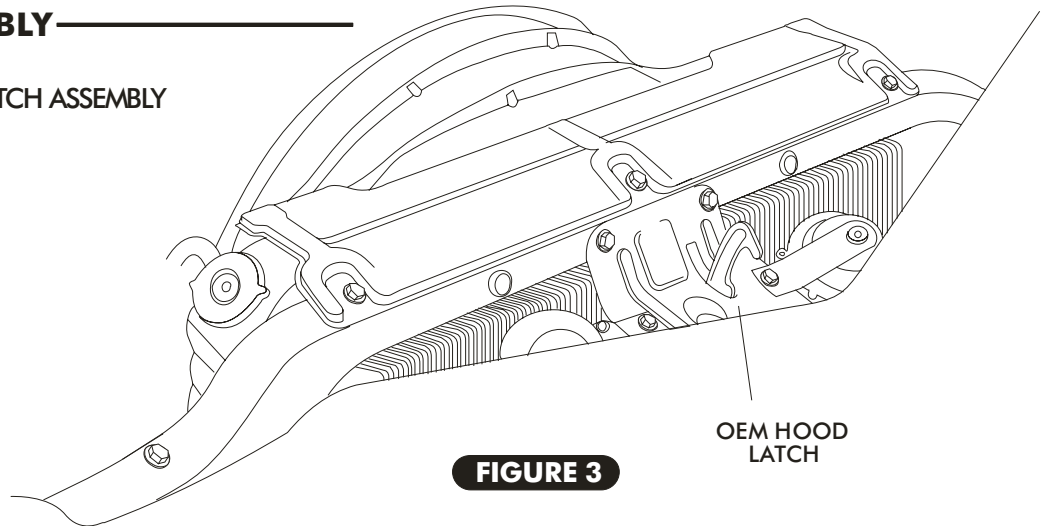


RADIATOR REMOVAL

- DRAIN RADIATOR REMOVE UPPER AND LOWER RADIATOR HOSES AND REMOVE RADIATOR.

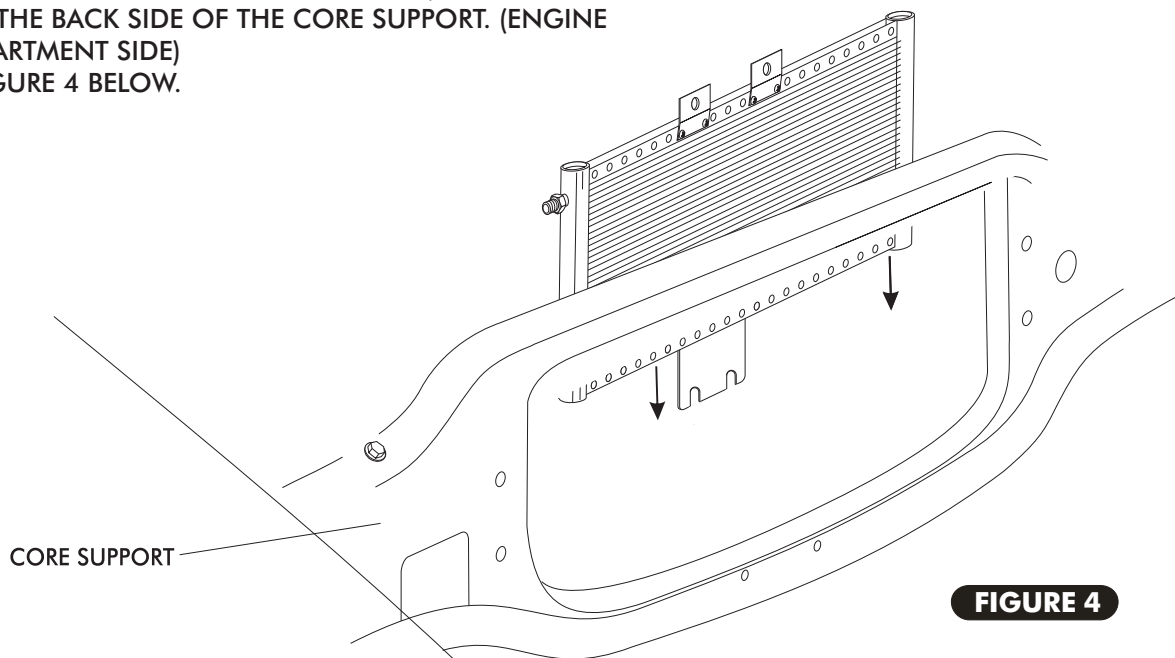
HOOD LATCH ASSEMBLY

- REMOVE OEM HOOD LATCH ASSEMBLY
SEE FIGURE 3 BELOW.



CONDENSER INSTALLATION

- INSTALL CONDENSER AS SHOWN BELOW, LOWER CONDENSER FROM THE BACK SIDE OF THE CORE SUPPORT. (ENGINE COMPARTMENT SIDE)
SEE FIGURE 4 BELOW.



- NOTE:** THE TOP MOUNTING BRACKET GOES ON THE FRONT SIDE OF THE CORE SUPPORT.

CONDENSER INSTALLATION CONT

- SECURE THE BOTTOM PASSENGER SIDE OF THE CONDENSER TO THE CORE SUPPORT USING OEM BOLT.
- USE DRIVER SIDE MOUNTING HOLE AS GUIDE DRILL 3/16" HOLE ON CORE SUPPORT. SECURE CONDENSER TO CORE SUPPORT USING #14 X 3/4 SHEETMETAL SCREW W/FLAT WASHERS. SEE FIGURE 5 BELOW.

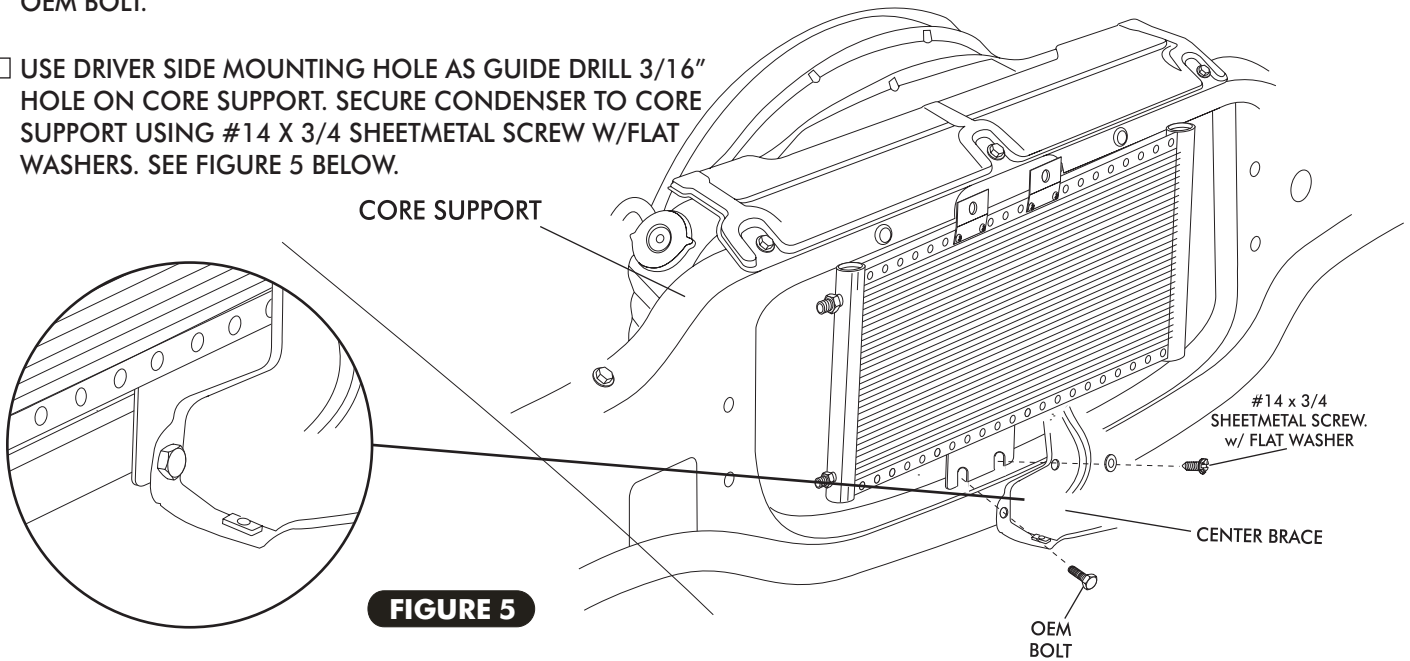


FIGURE 5

- RE-INSTALL HOOD LATCH ASSEMBLY USING OEM BOLTS, INSTALL OEM BOLTS THROUGH THE HOOD LATCH ASSEMBLY, CONDENSER, BRACKET, AND THROUGH THE CORE SUPPORT. SEE FIGURE 6 BELOW.

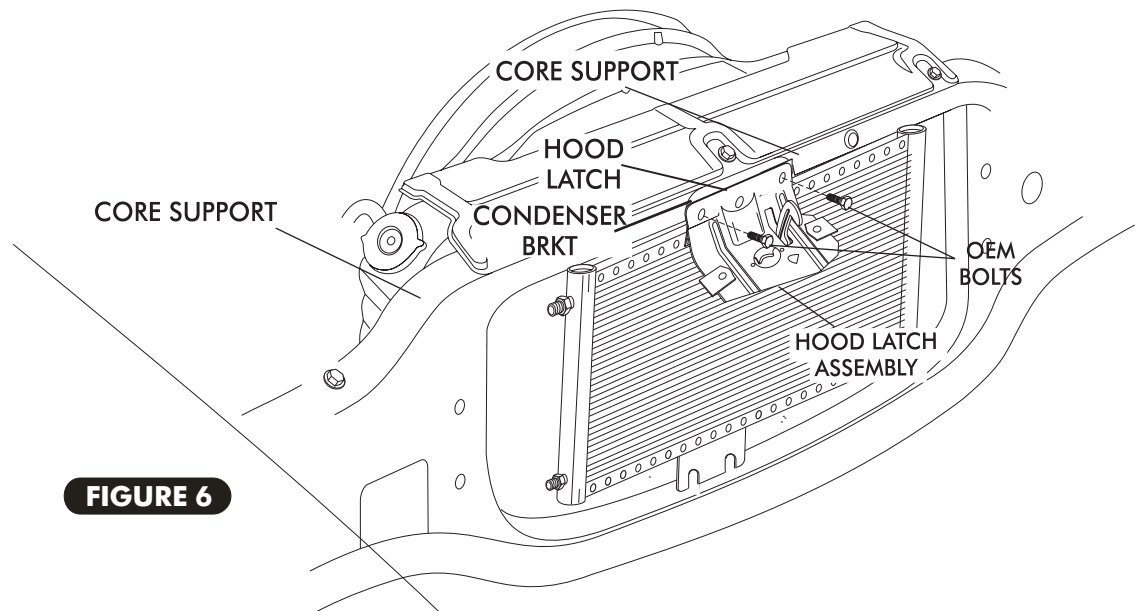


FIGURE 6



DRIER/SAFETY SWITCH INSTALLATION

- MOUNT DRIER ON PASSENGER SIDE INNER FENDERWELL.
- INSTALL DRIER/DRIER CLAMP TO INNER FENDERWELL USING 1/4-20 X 1" BOLT W/2 FLAT WASHERS 1- ON EACH SIDE OF INNER FENDERWELL AND 1/4-20 HEX NUT W/STARWASHER.
- NOTE: W/AC CARS USE LOWER 5/16" OEM EXITING FACTORY HOLE. SEE FIGURE 7.**
- NOTE: WO/AC CARS USE LOWER OEM DIMPLE AS A GUIDE AND DRILL 5/16" HOLE. SEE FIGURE 7.**
- NOTE: BE SURE TO CHECK FLOW ARROW OF DRIER.**

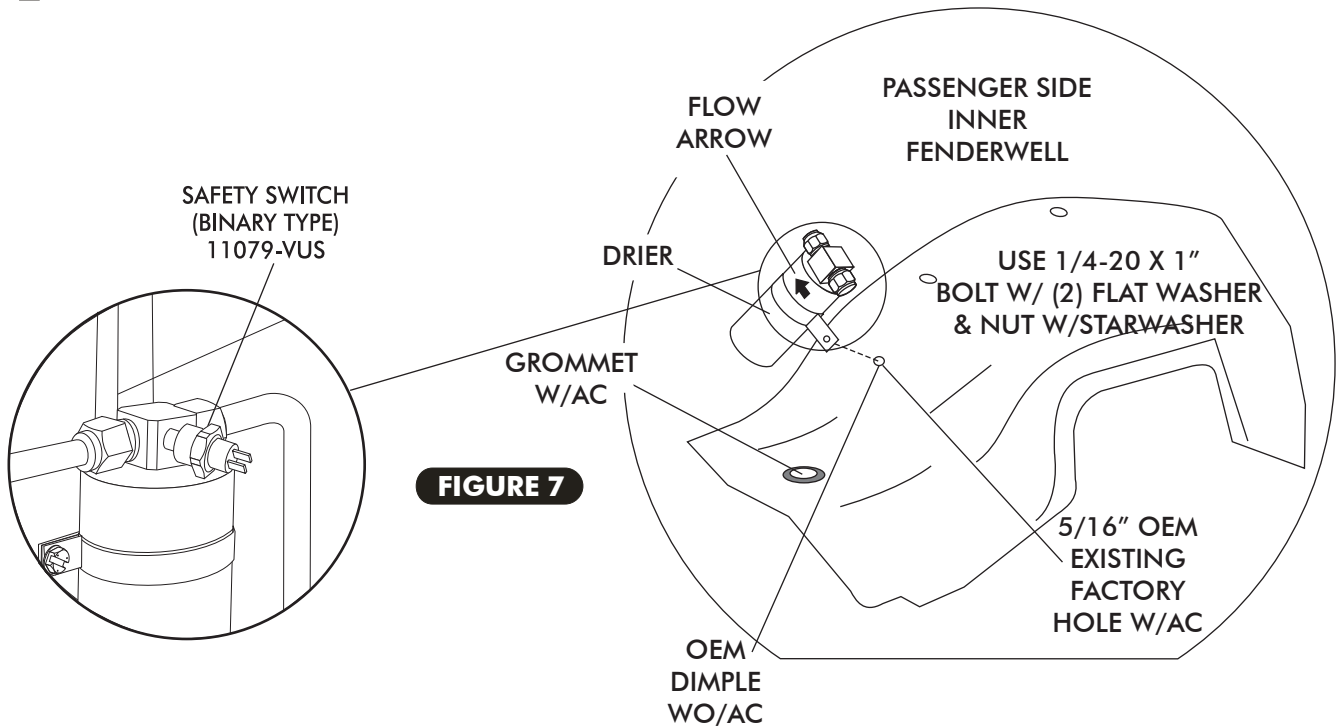


FIGURE 7

FOR A PROPER SEAL OF FITTINGS:
 INSTALL SUPPLIED O-RINGS AS SHOWN AND LUBRICATE WITH SUPPLIED OIL.



#6 O-RING



#8 O-RING

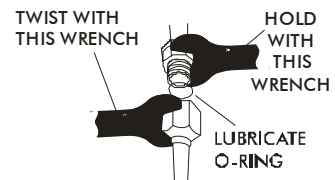
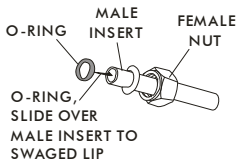


FIGURE 8

HARDLINE INSTALLATION

- LUBRICATE (2) #6 O-RING (SEE FIGURE 8) AND INSTALL THE #6 DRIER/COND HARDLINE AS SHOWN IN FIGURE 9 BELOW. TIGHTEN FITTINGS AS SHOWN IN FIGURE 8, PAGE 8.

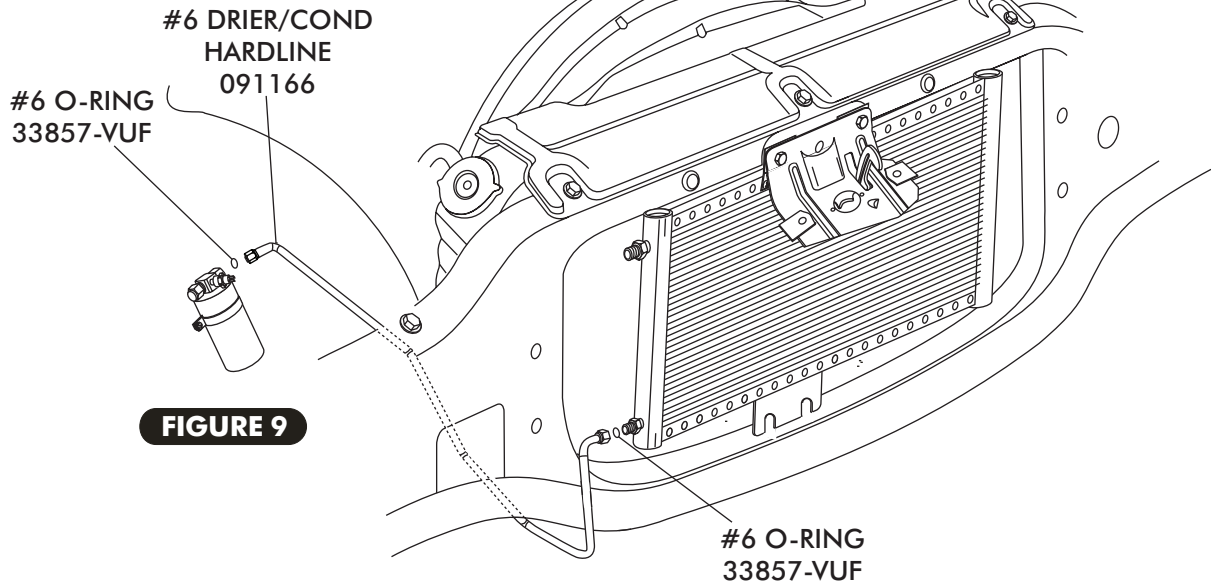


FIGURE 9

- LUBRICATE #8 O-RING (SEE FIGURE 8) AND INSTALL THE #8 COND/CORE HARDLINE AS SHOWN IN FIGURE 10 BELOW. TIGHTEN FITTINGS AS SHOWN IN FIGURE 8, PAGE 8.

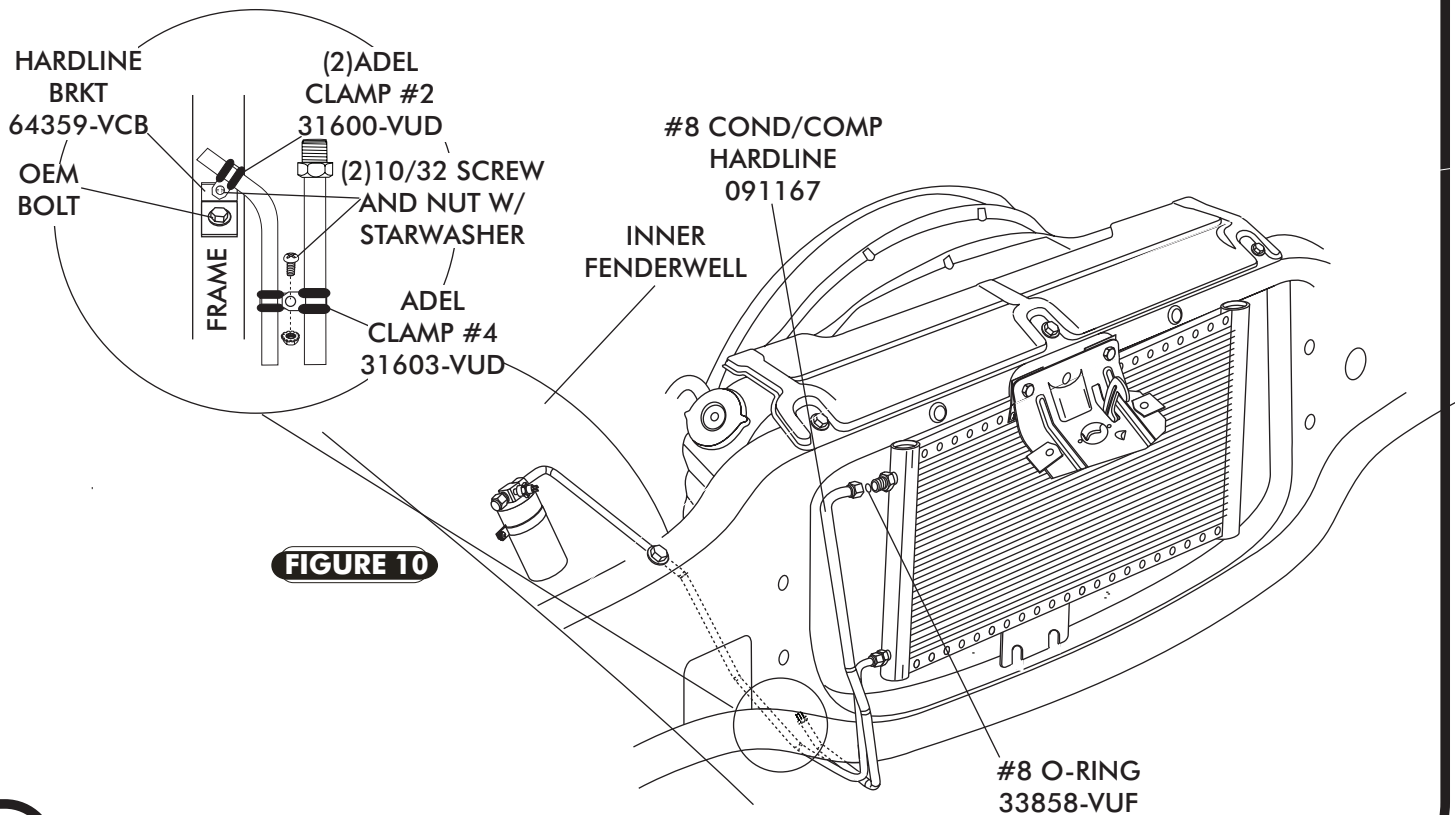


FIGURE 10



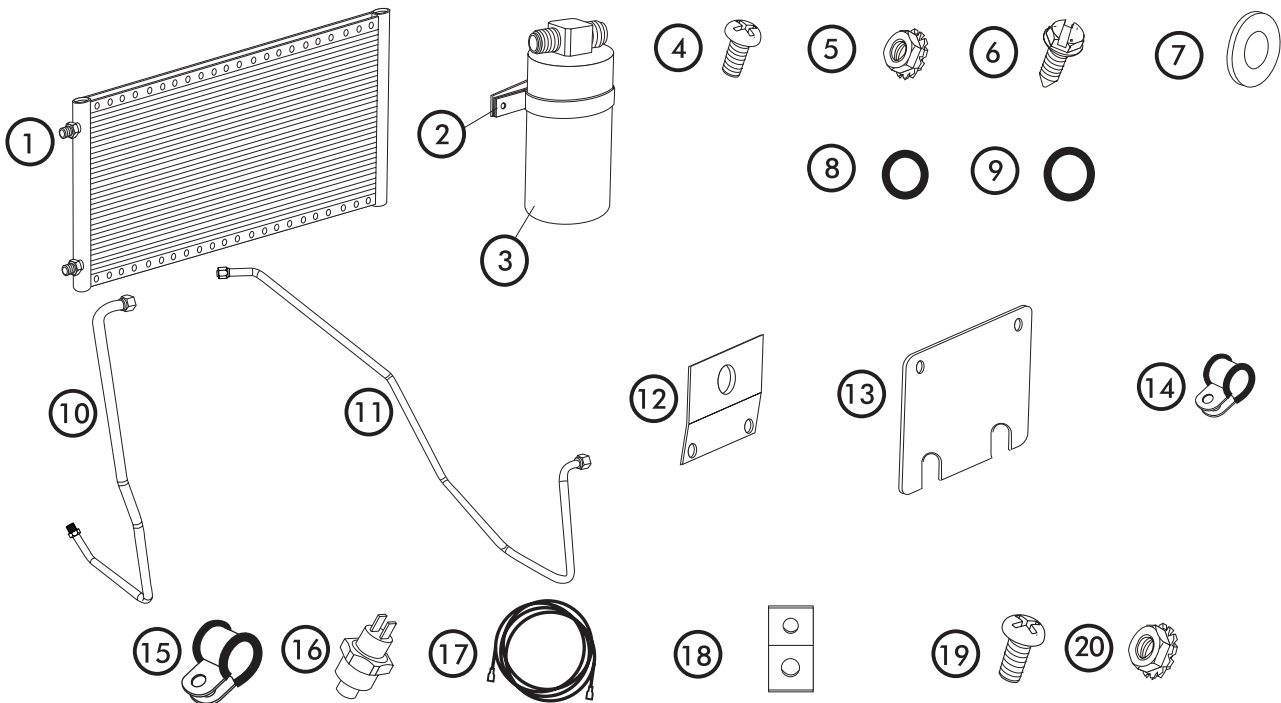
1964-67 CHEVELLE w/w/o AC CONDENSER w/ DRIER

CONDENSER KIT 021166

No.	QTY.	PART No.	DESCRIPTION
1.	1	03767-VUC	14" X 24" PARALLEL FLOW COND.
2.	1	65980-VCB	DRIER CLAMP
3.	1	07321-VUC	DRIER
4.	6	18249-VUB	10/24" X 3/8" PAN HEAD
5.	6	18260-VUB	10/24" NUT w/STAR WASHER
6.	1	18266-VUB	#14 x 3/4 SHEETMETAL SCREW
7.	1	18611-VUB	5/16" FLAT WASHER
8.	2	33857-VUF	#6 O'RING
9.	1	33858-VUF	#8 O'RING
10.	1	091167	64-67 CHEVELLE PS #8 COND/COMP HARDLINE
11.	1	091166	64-67 CHEVELLE #6 DRIER/COND HARDLINE
12.	2	64197-VCB	64-67 CHEVELLE TOP COND BRKT
13.	1	643057	64-67 CHEVELLE BOTTOM COND BRKT
14.	2	31600-VUD	#2 RUBBER ADEL CLAMP
15.	1	31603-VUD	#4 RUBBER ADEL CLAMP
16.	1	11079-VUS	MALE BINARY SWITCH
17.	1	23135-VUW	COMPRESSOR LEAD
18.	1	64359-VCB	HARDLINE BRKT
19.	2	18250-VUB	10/32 X 1/2 PH PAN HEAD SCREW
20.	2	18251-VUB	10/32 NUT W/STARWASHER

CHECKED BY: _____
 PACKED BY: _____
 DATE: _____

**** BEFORE BEGINNING INSTALLATION OPEN ALL PACKAGES AND CHECK CONTENTS OF SHIPMENT. PLEASE REPORT ANY SHORTAGES DIRECTLY TO VINTAGE AIR WITHIN 15 DAYS. AFTER 15 DAYS, VINTAGE AIR WILL NOT BE RESPONSIBLE FOR MISSING OR DAMAGED ITEMS.**



NOTE: IMAGES MAY NOT DEPICT ACTUAL PARTS AND QUANTITIES. REFER TO PACKING LIST FOR ACTUAL PARTS AND QUANTITIES