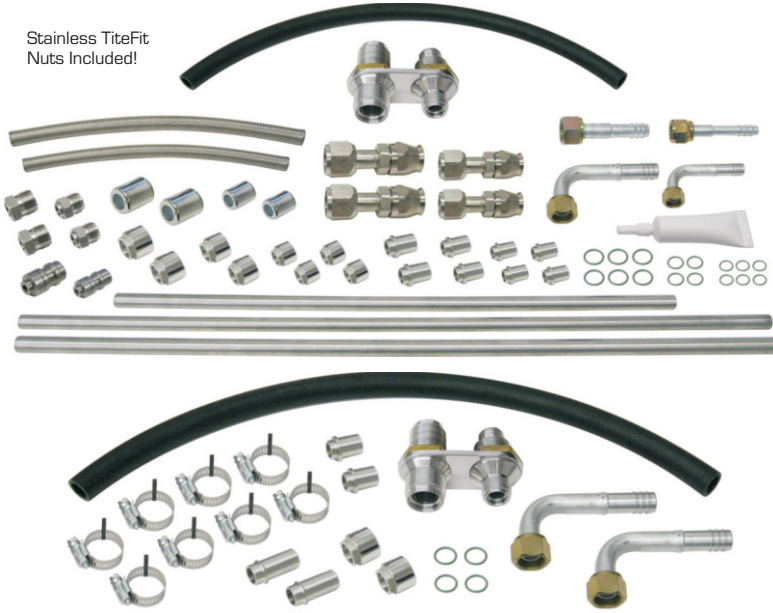


REFRIGERANT LINES - Stainless Steel & Tite Fit Line Kits

Stainless TiteFit Nuts Included!



Vintage Air Stainless Steel A/C Line Kit

Include straight stainless steel tubing (72" of #6, 36" of #8, and 72" of #10 tubing), tube ends with stainless TiteFit TM nuts, one foot each of stainless Aeroquip #10 & #8 line with straight fittings and a Proline A/C bulkhead plate.

for flex areas and 1 heater bulkhead plate.

31202-VUQ Proline line kit R-12/134a with 2 way bulkhead

31203-VUQ Proline line kit R-12/134a with 4 way bulkhead

31201-VUQ Proline line kit R-12/134a without bulkhead

36701-VUR Silver solder for S/S lines (30")

See page 69 for individual stainless parts and fittings.

Vintage Air Stainless Steel Heater Line Kit

Include stainless steel tubing (60" of 1/2" #10 tubing) 2 tube ends with nuts, 2 tube ends with barbs, rubber hose for flex areas and 1 heater bulkhead plate.

31100-VUQ Proline heater line kit

31101-VUQ Proline heater kit without bulkhead fittings.

Stainless Hardline Parts



Stainless 5/8" barb tube end (heater) **36090-MPA**



Stainless rear exit head fitting (drilled) **36630-MPA** (use with **36300-MPA**)



Stainless #10 male O-ring to 3/8" NPT adapter (heater) **36032-MPA**



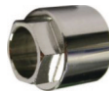
Stainless compressor nut **36300-MPA** (use with head fitting)



Stainless #10 male O-ring to 1/2" NPT adapter (heater) **36033-MPA**



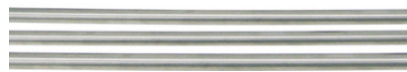
Stainless O-ring weld-on line ends
#6**36400-MPA**
#8**36500-MPA**
#10**36600-MPA**



Stainless TiteFit™ Nut
#6**36140-MPA**
#8**36240-MPA**
#10**36340-MPA**



Stainless male weld-on O-ring nut
#6**36154-MPA**
#8**36255-MPA**
#10**36356-MPA**



Stainless tubing stock
06300-VUG - 5/16"#6 (ordered per foot) 3/8" I.D.
06301-VUG - 3/8"#8 (ordered per foot) 1/2" I.D.
06302-VUG - 1/2"#10 (ordered per foot) 5/8" I.D.

TiteFit Aluminum Hardline Kits



35135-VUQ-A - Pre -1935 vehicle 134a application

35136-VUG-A - 1935-up vehicle 134a applications with top mount steel compressor bracket



Patented Designs



35137-VUQ-A 1935-up vehicle 134a applications

Creates compact and professional looking refrigerant line routing down and close to engine. Kits with Proline Tite Fit Nuts built onto line (-VUQ numbers) come fully polished and include machined aluminum line clamps.

For use with Vintage Air ProLine™ compressor bracket

35135-VUG-A Tite Fit line kit for pre-'35 model cars and trucks 134a

35135-VUQ-A Tite Fit line kit with Tite Fit Nuts for pre-'35 model cars and trucks (polished) 134a

35136-VUG-A Tite Fit line kit for '35-up model cars and trucks 134a

35136-VUQ-A Tite Fit line kit with Tite Fit Nuts for '35-up model cars and trucks (polished) 134a

38110-VUQ Double line clamp with bracket and hardware.

(included with all "-VUQ" Tite Fit kit part numbers)

For use with Vintage Air ProLine™ compressor bracket

35137-VUG-A Tite Fit line kit for '35-up model cars and trucks 134a

35137-VUQ-A Tite Fit line kit with Tite Fit Nuts for '35-up model cars and trucks (polished) 134a

38112-VUQ Double line clamp with bracket and hardware.

(included with all "-VUQ" Tite Fit kit part numbers)

CUSTOMER SERVICE TEAM

Mark Hungerford is our technical services director. Mark is also totally into motorsports. Especially NASCAR racing. Mark drives his well built flat black '65 Chevy pickup with all the usual cool tricks including, of course, a Vintage Air Sure Fit Kit!