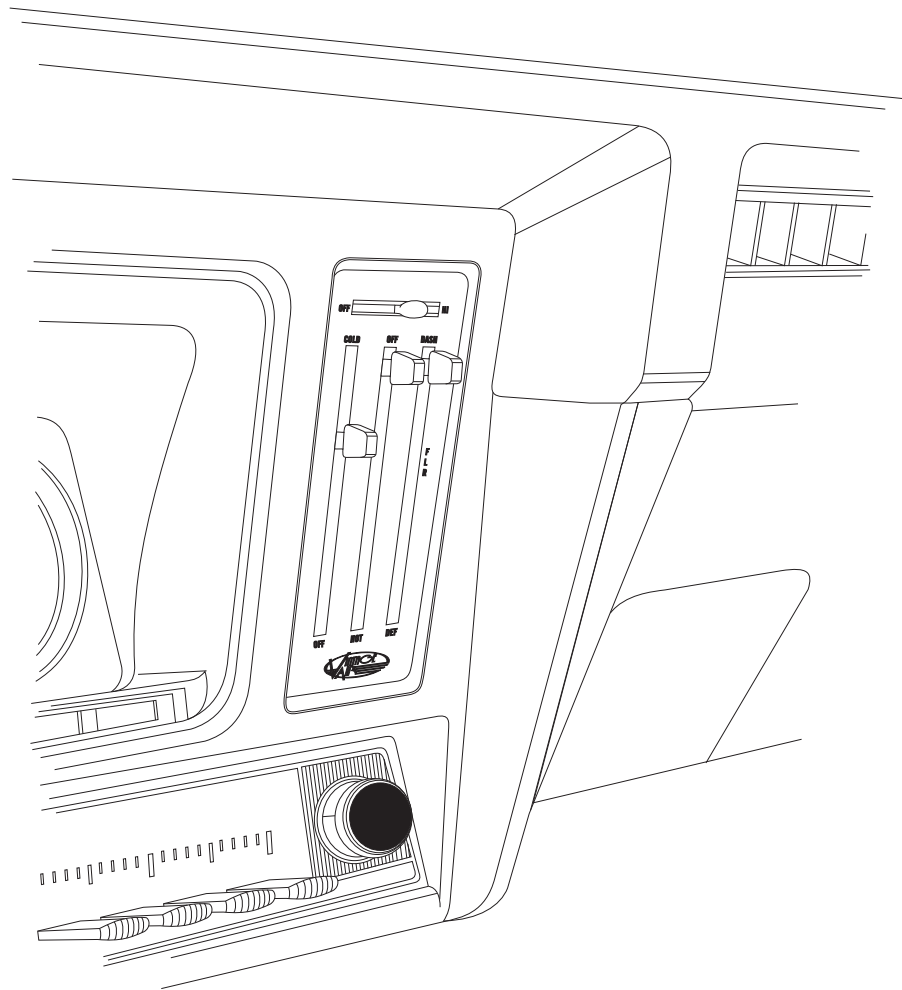




1969 CAMARO

W/ AC CONTROL PANEL
CONVERSION KIT

474269



18865 GOLL ST. - SAN ANTONIO, TX. - 78266 ph.210-654-7171 - fax 210-654-3113



Table of Contents

PAGES

1. COVER
2. TABLE OF CONTENTS
3. PACKING LIST/ PARTS DISCLAIMER
4. REMOVING OEM CONTROL PANEL
SLIDE POT MODIFICATIONS
5. SLIDE POT ASM MOUNTING CLAMP INSTALLATION
PLACARD INSTALLATION
6. SLIDE POT ASM INSTALLATION (DASH/FLR/DEF SLIDE POT ASM)
7. CONTROL HARNESS
8. OFF/HOT SLIDE POT ASM INSTALLATION
CONTROL HARNESS
9. CONTROL HARNESS CONT.
COLD/OFF SLIDE POT ASM INSTALLATION
10. CONTROL HARNESS
11. BLOWER SWITCH PC BOARD INSTALLATION
CONTROL HARNESS CONT.
12. FINAL STEPS
13. CONTROL PANEL CALIBRATION PROCEDURE
14. WIRING DIAGRAM
15. OPERATION OF CONTROLS
16. CONTROL PANEL KIT PACKING LIST



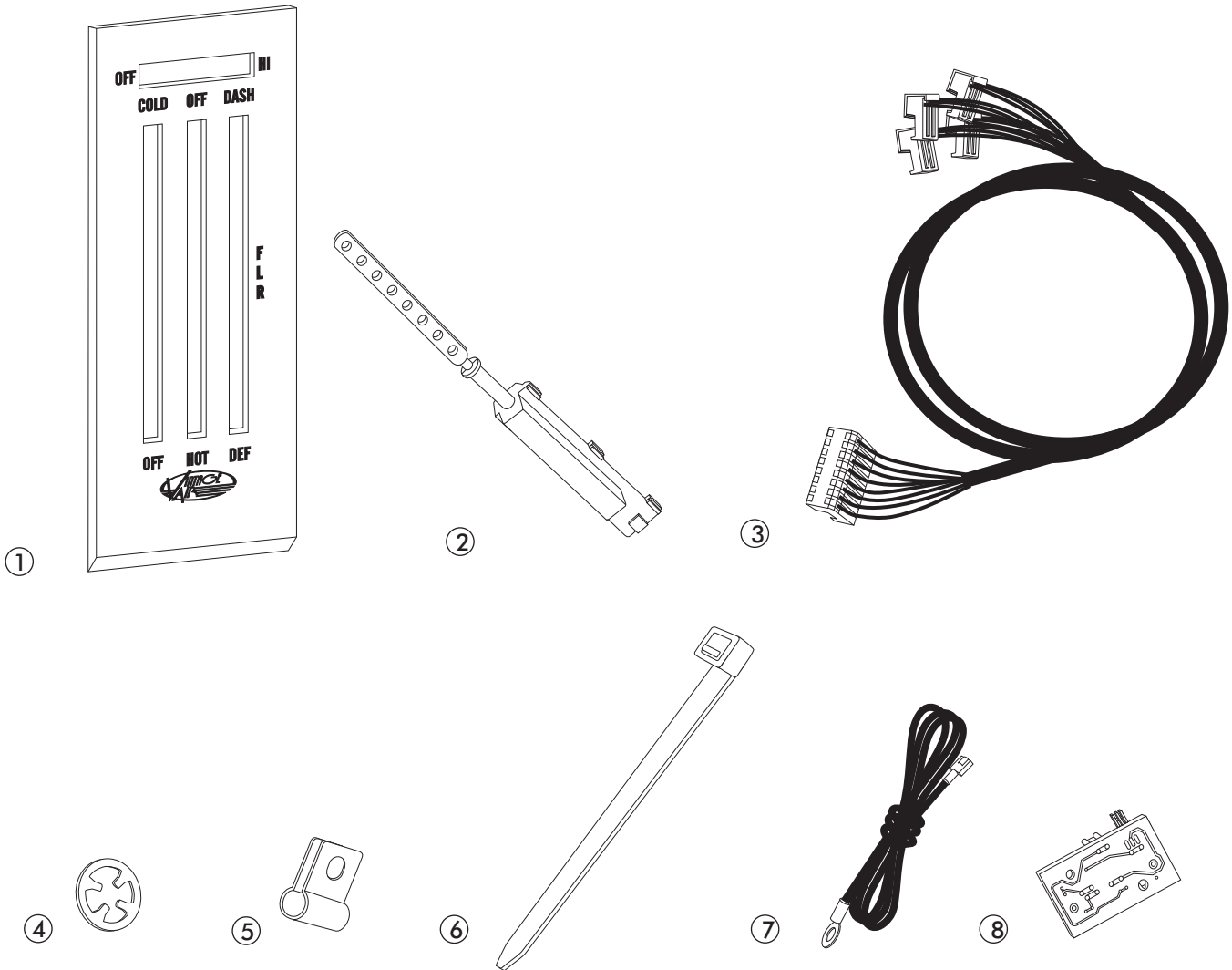
1969 CAMARO w/ AC CNTRL PNL

CONTROL KIT PACKING LIST

**CONTROL KIT
474269**

No.	QTY.	PART No.	DESCRIPTION	
1.	1	484169-PCR	1969 CAMARO w/ AC PLACARD w/ BLACK BACKING SHEET	_____
2.	3	112002-SUA	SLIDE POT ASM	_____
3.	1	232006-VUR	GEN IV UNIVERSAL CONTROL HARNESS (TYPE B)	_____
4.	3	65976-VUE	3/16" PUSH-ON RING	_____
5.	3	491010-VUR	SLIDE POT CLAMP	_____
6.	5	21301-VUP	4" TIE WRAP	_____
7.	1	23140-VUW	GROUND WIRE	_____
8.	1	246108-PUA	BLOWER SWITCH PC BOARD	_____

**** BEFORE BEGINNING INSTALLATION OPEN ALL PACKAGES AND CHECK CONTENTS OF SHIPMENT. PLEASE REPORT ANY SHORTAGES DIRECTLY TO VINTAGE AIR WITHIN 15 DAYS. AFTER 15 DAYS, VINTAGE AIR WILL NOT BE RESPONSIBLE FOR MISSING OR DAMAGED ITEMS.**





CONTROL PANEL CONVERSION INSTRUCTIONS FOR 1969 CAMARO w/ AC

REMOVING OEM CONTROL PANEL

- REMOVE THE (3) OEM MOUNTING SCREWS FROM INSTRUMENT PANEL OF DASH. SEE FIGURE 1 BELOW.
- DISCONNECT CABLES AND WIRES FROM BACK OF CONTROL PANEL. NOTE: MAKE SURE THE GLOVE BOX AND GLOVE BOX DOOR HAVE BEEN REMOVED.
- REMOVE THE CONTROL PANEL FROM BEHIND THE DASH THROUGH THE GLOVE BOX OPENING IN DASH.

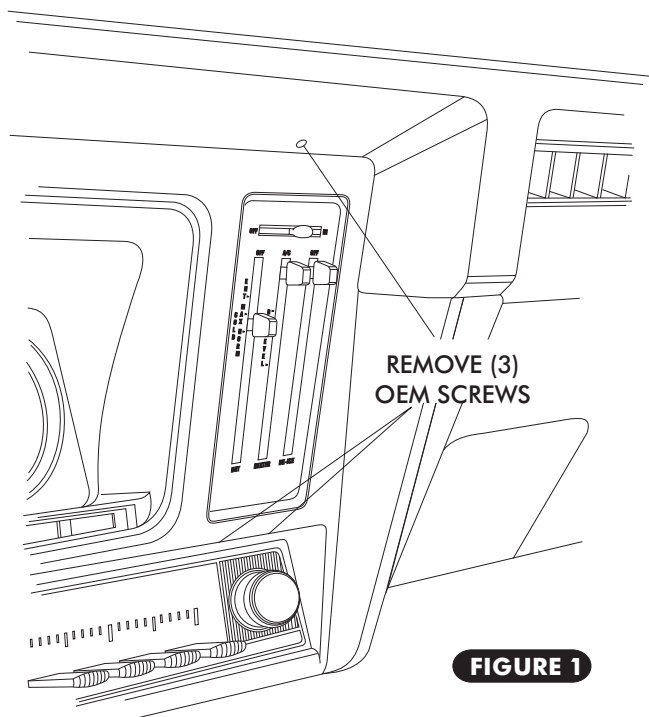


FIGURE 1

SLIDE POT ASSEMBLY MODIFICATIONS

- LOCATE THE THREE SLIDE POT ASSEMBLIES, AND USING A PAIR OF WIRE CUTTERS, CUT SLIDE POT ACTUATOR RODS AS SHOWN BELOW IN FIGURE 2.

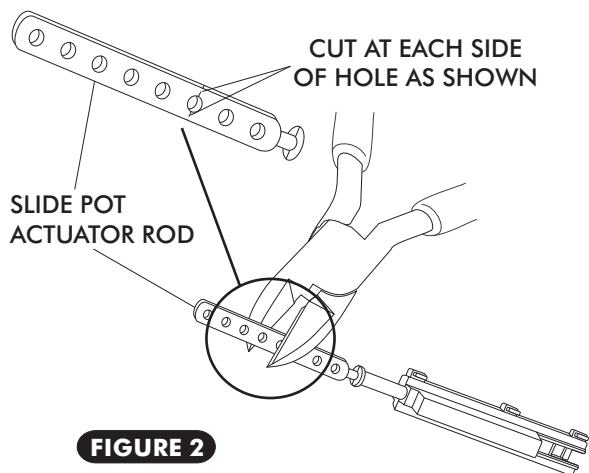
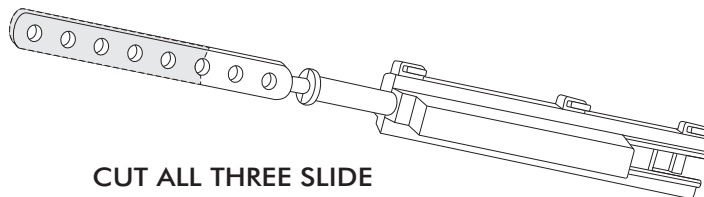


FIGURE 2



CUT ALL THREE SLIDE
POT ASSEMBLIES
AT 3RD HOLE
(REMOVE SHADED PORTION)



SLIDE POT ASSEMBLY MOUNTING CLAMP INSTALLATION

- INSTALL SLIDE POT ASM MOUNTING CLAMPS. SEE FIGURE 3 BELOW.

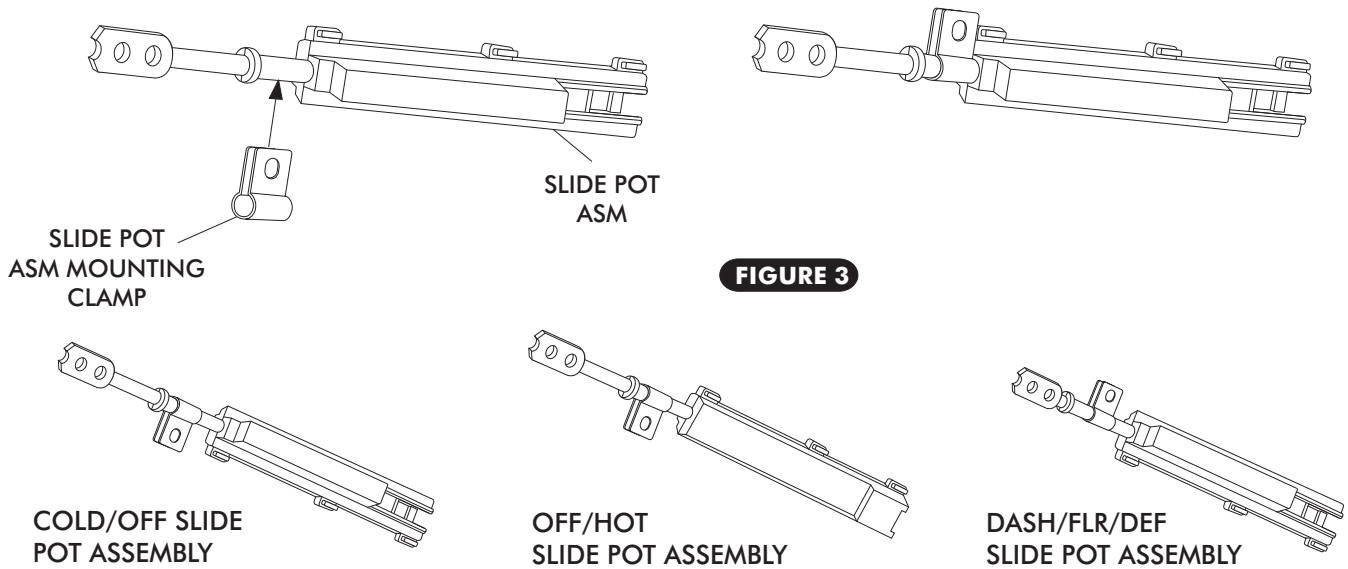


FIGURE 3

ORIENT SLIDE POT ASSEMBLIES AS SHOWN AND INSTALL MOUNTING CLAMPS AS SHOWN. (NOTE: ORIENT CLAMPS IN RELATION TO THE (3) HOUSING SNAPS ON SLIDE POT ASSEMBLY)

PLACARD INSTALLATION

- REMOVE LEVER KNOBS
- REMOVE PLACARD RETAINING CLIPS. SEE FIGURE 4 BELOW.
- REMOVE BACKING SHEET FROM CONTROL PANEL.
- INSTALL NEW BLACK BACKING SHEET ON CONTROL PANEL. SEE FIGURE 4 BELOW.
- INSTALL NEW PLACARD AND SECURE USING OEM RETAINING CLIPS. SEE FIGURE 4 BELOW.
- RE-INSTALL KNOBS.

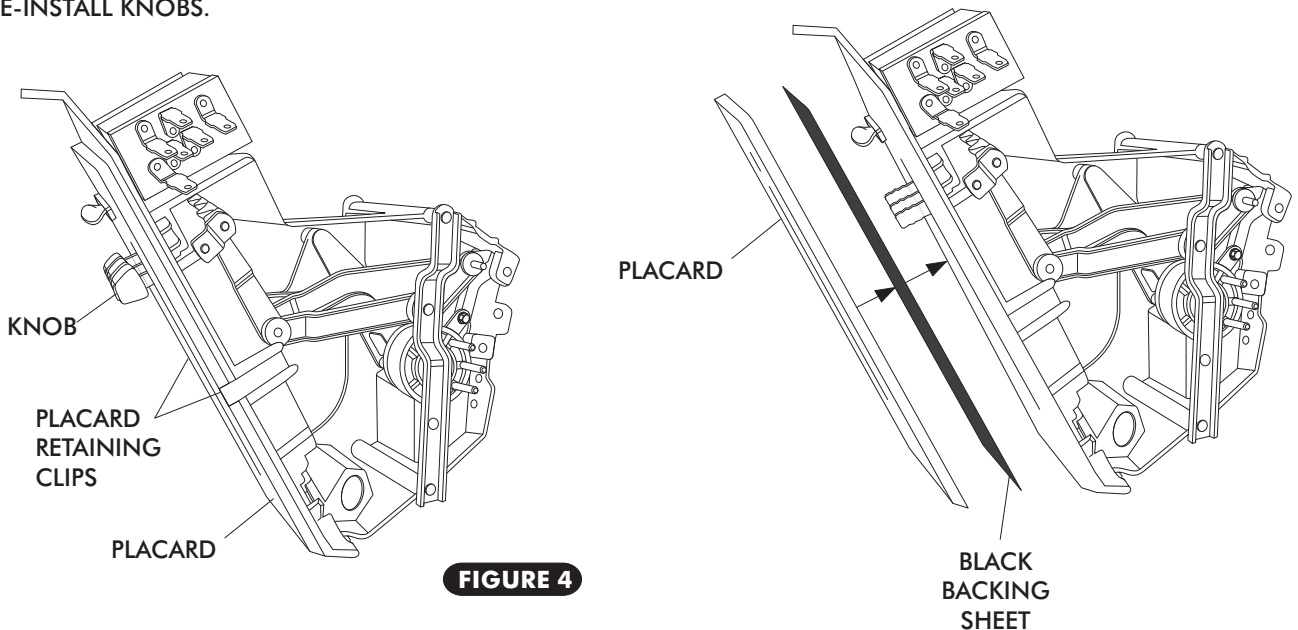


FIGURE 4



SLIDE POT ASSEMBLY INSTALLATION

DASH/FLR/DEF SLIDE POT ASSEMBLY

- INSTALL SLIDE POT ASM ON THE DASH/FLR/DEF LEVER. SEE FIGURE 5 BELOW.
- INSTALL SLIDE POT LEVER PUSH ROD ONTO OEM CABLE MOUNTING STUD ON LEVER. SEE FIGURE 5 BELOW.
- SECURE THE SLIDE POT ASM TO THE CONTROL PANEL USING THE OEM SCREW IN THE OEM CABLE CLAMP MOUNTING LOCATION. SEE FIGURE 5 BELOW.
- SINCE THE SLIDE POT ASSEMBLY CAN SLIDE BACK AND FORTH IN CLAMP BEFORE SCREW IS TIGHTENED, POSITION SLIDE POT ASSEMBLY SUCH THAT THE FLAT PART OF THE ROD IS AS CLOSE TO FLUSH AS POSSIBLE WITH THE END OF HOUSING AT THE LEVER'S INNER MOST POSITION. SEE FIGURE 5 BELOW.
- SECURE SLIDE POT LEVER PUSH ROD ONTO OEM CABLE MOUNTING STUD USING 3/16" PUSH-ON RING AS SHOWN IN FIGURE 5 BELOW.
- REMOVE VACUUM MODULE (DISCARD) AS SHOWN IN FIGURE 5 BELOW.

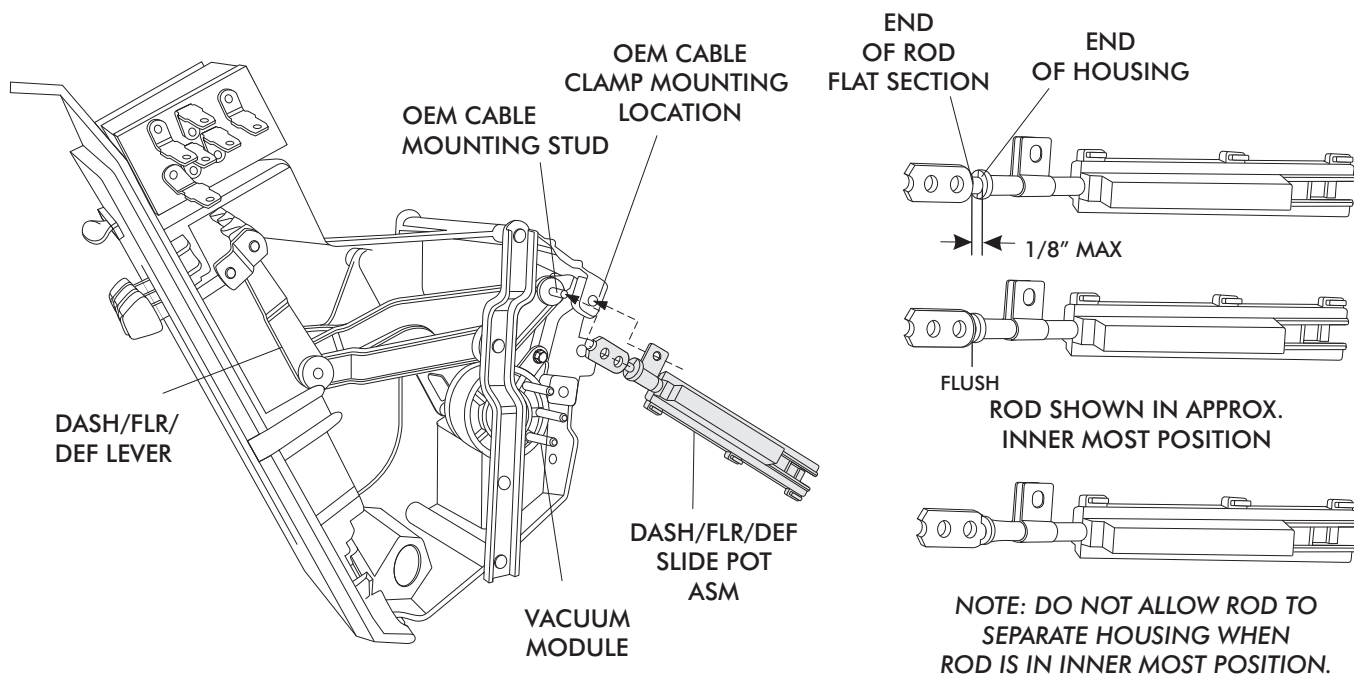
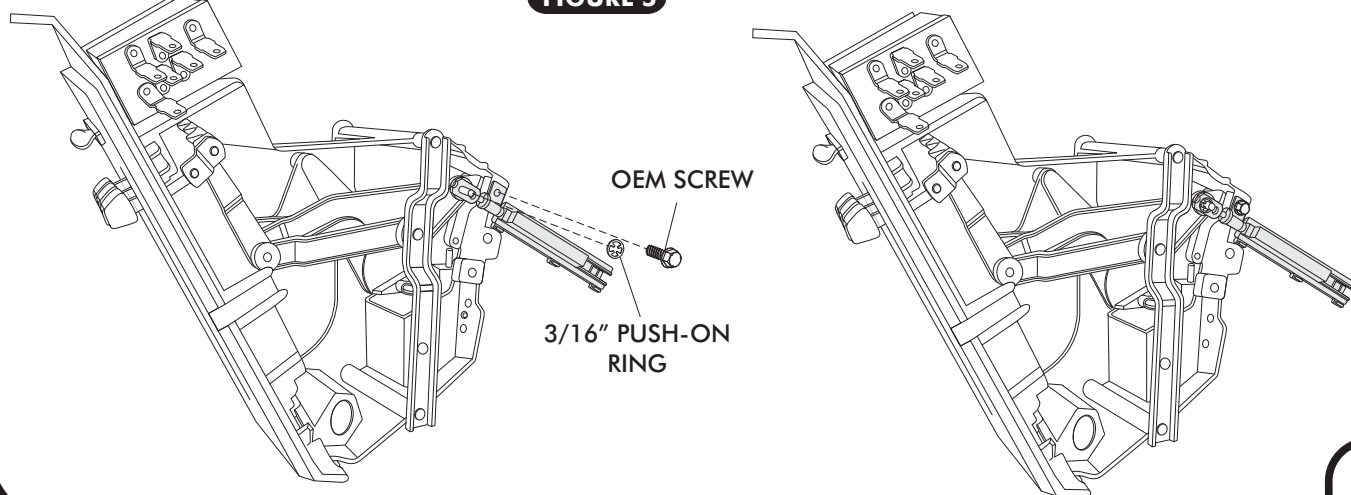


FIGURE 5





CONTROL HARNESS

- LOCATE THE CONTROL PANEL WIRE HARNESS AND PLUG THE CORRESPONDING WIRES INTO THE CORRECT SLIDE POT ASSEMBLY AS SHOWN IN FIGURE 5a BELOW.

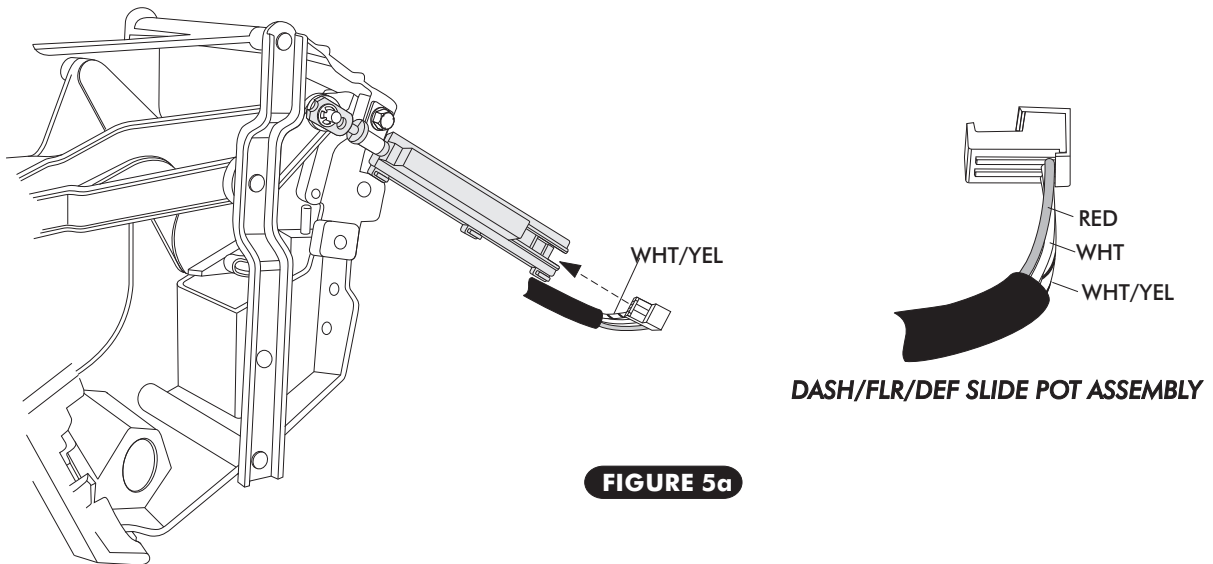


FIGURE 5a

- ONCE WIRES ARE CORRECTLY PLUGGED INTO SLIDE POT ASSEMBLY, SECURE WIRES TO THE SLIDE POT ASSEMBLY USING TIE WRAPS (SUPPLIED). SEE FIGURE 5b BELOW. THE TIE WRAP MUST BE LOCATED BETWEEN THE END OF THE WIRE JACKET AND THE STEP IN THE SLIDE POT HOUSING FORCING A BEND IN EACH WIRE AS THEY PASS OVER THE STEP IN SLIDE POT HOUSING. HEAD OF TIE WRAP MUST FALL ON EDGE OF HOUSING AS SHOWN TO REMAIN TIGHT. ENSURE THAT THE TIE WRAPS ARE SNUG ENOUGH THAT THE WIRES CANNOT MOVE. SEE FIGURE 5b.

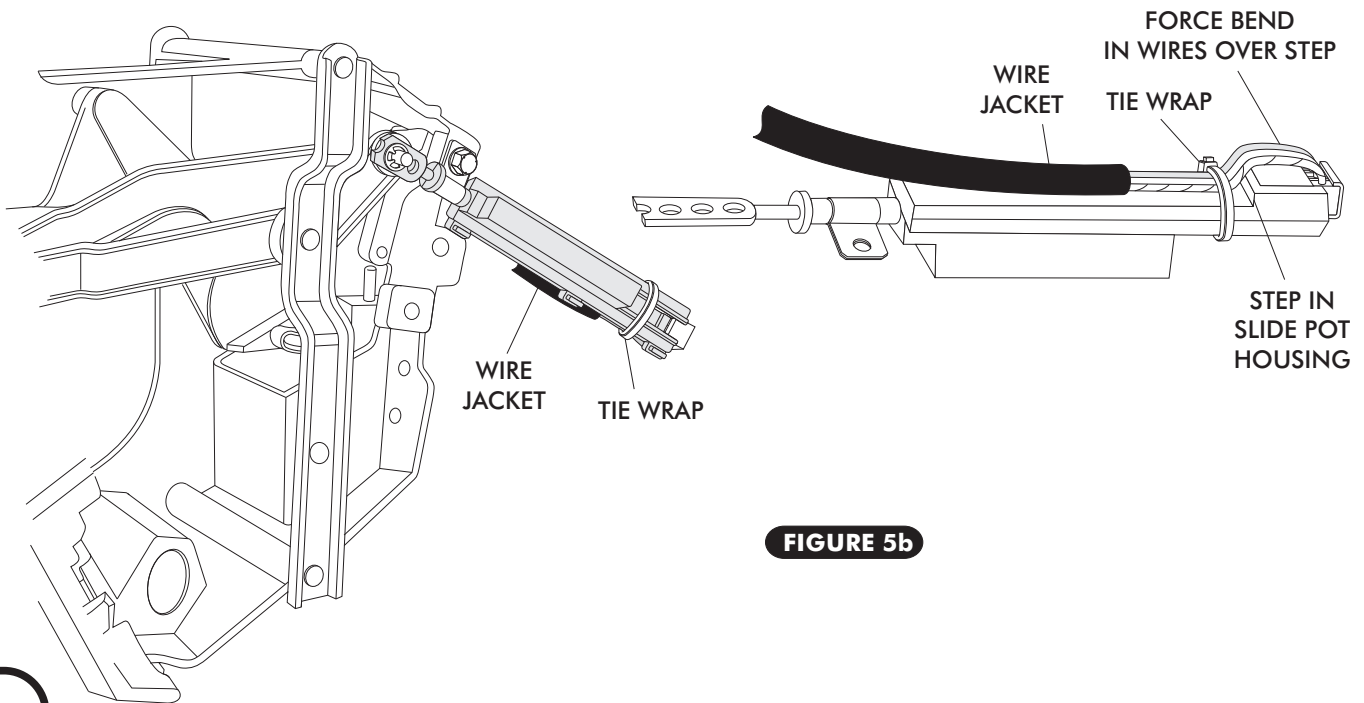


FIGURE 5b



OFF/HOT SLIDE POT ASSEMBLY

- INSTALL SLIDE POT ASM ON THE OFF/HOT LEVER. SEE FIGURE 6 BELOW.
- INSTALL SLIDE POT LEVER PUSH ROD ONTO OEM CABLE MOUNTING STUD ON LEVER. SEE FIGURE 6 BELOW.
- SECURE THE SLIDE POT ASM TO THE CONTROL PANEL USING THE OEM SCREW IN THE OEM CABLE CLAMP MOUNTING LOCATION. SEE FIGURE 6 BELOW.
- SINCE THE SLIDE POT ASSEMBLY CAN SLIDE BACK AND FORTH IN CLAMP BEFORE SCREW IS TIGHTENED, POSITION SLIDE POT ASSEMBLY SUCH THAT THE FLAT PART OF THE ROD IS AS CLOSE TO FLUSH AS POSSIBLE WITH THE END OF HOUSING AT THE LEVER'S INNER MOST POSITION. FIGURE 5, PAGE 6.
- SECURE SLIDE POT LEVER PUSH ROD ONTO OEM CABLE MOUNTING STUD USING 3/16" PUSH-ON RING AS SHOWN IN FIGURE 6 BELOW.

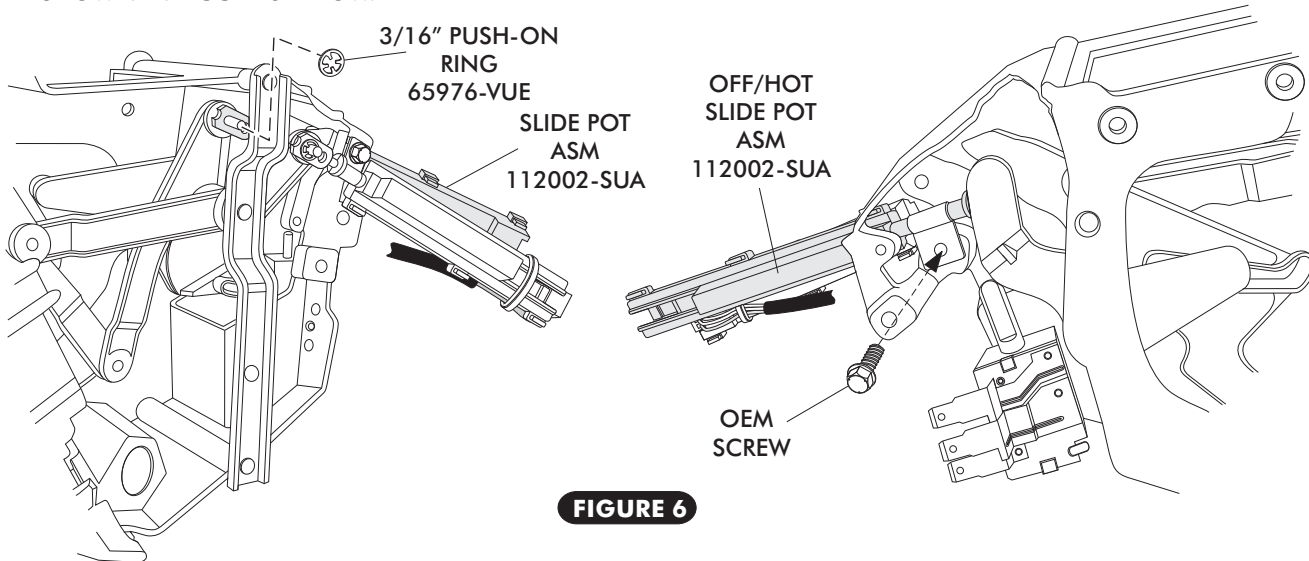


FIGURE 6

CONTROL HARNESS

- LOCATE THE CONTROL PANEL WIRE HARNESS, PLUG THE CORRESPONDING WIRES INTO THE CORRECT SLIDE POT ASSEMBLY AS SHOWN IN FIGURE 6a BELOW.

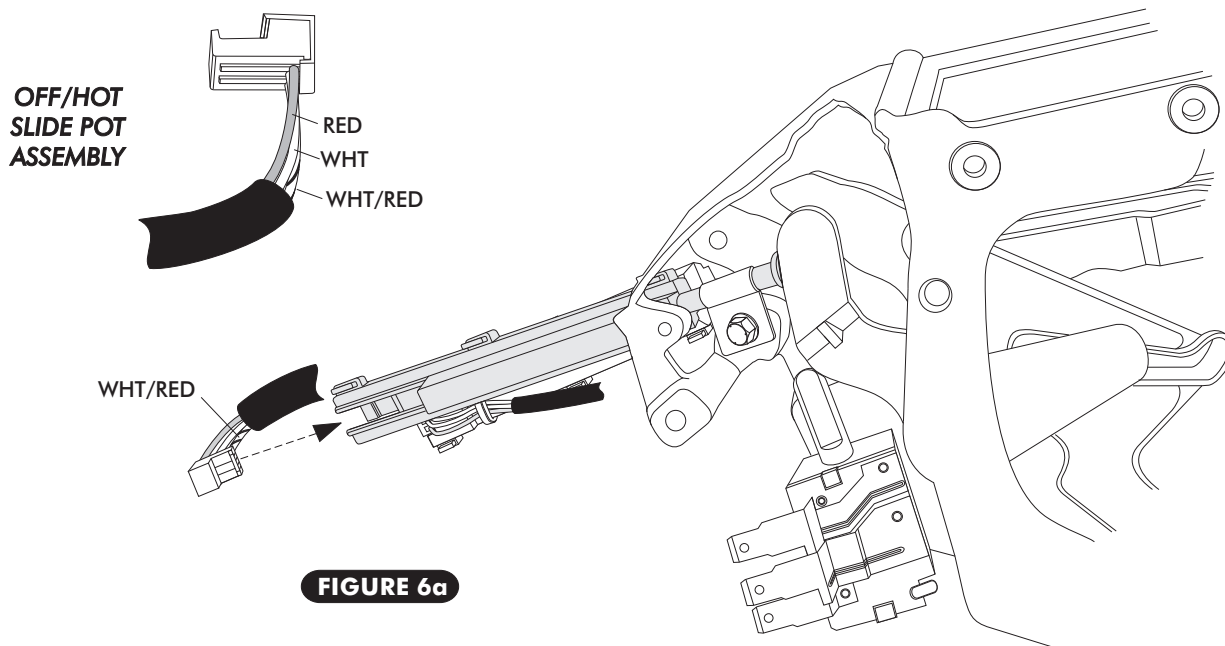


FIGURE 6a



- ONCE WIRES ARE CORRECTLY PLUGGED INTO SLIDE POT ASSEMBLY, SECURE WIRES TO THE SLIDE POT ASSEMBLY USING TIE WRAPS (SUPPLIED). SEE FIGURE 6b BELOW. THE TIE WRAP MUST BE LOCATED BETWEEN THE END OF THE WIRE JACKET AND THE STEP IN THE SLIDE POT HOUSING FORCING A BEND IN EACH WIRE AS THEY PASS OVER THE STEP IN SLIDE POT HOUSING. HEAD OF TIE WRAP MUST FALL ON EDGE OF HOUSING AS SHOWN TO REMAIN TIGHT. ENSURE THAT THE TIE WRAPS ARE SNUG ENOUGH THAT THE WIRES CANNOT MOVE. SEE FIGURE 6b.

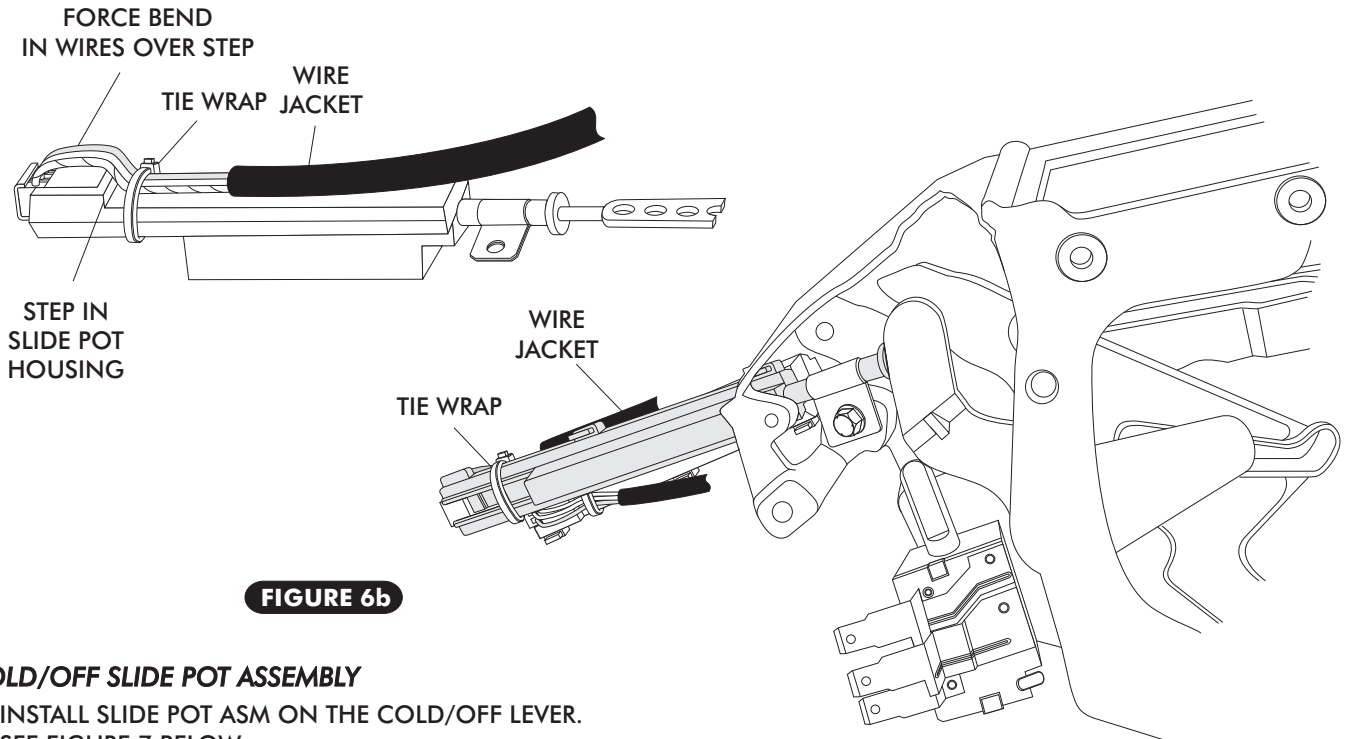
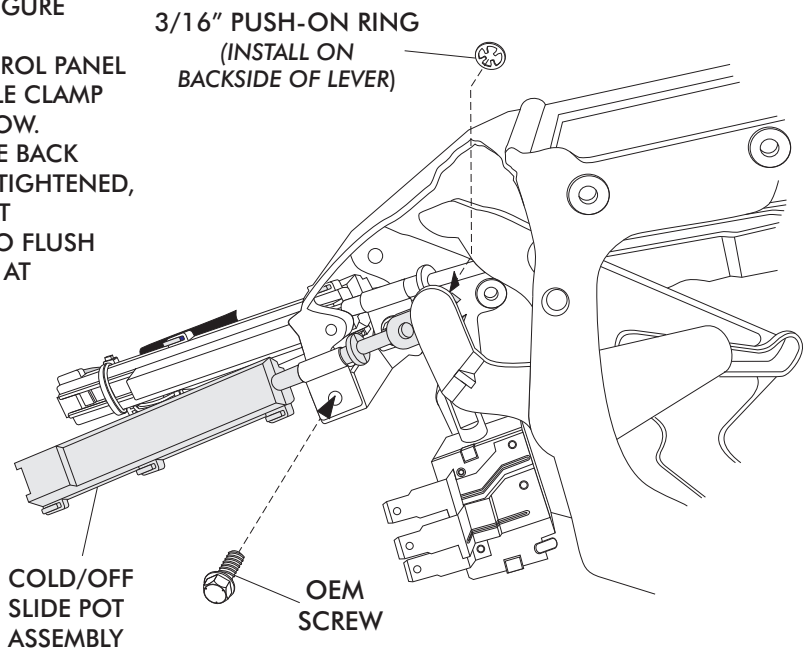


FIGURE 6b

COLD/OFF SLIDE POT ASSEMBLY

- INSTALL SLIDE POT ASM ON THE COLD/OFF LEVER. SEE FIGURE 7 BELOW.
- INSTALL SLIDE POT LEVER PUSH ROD ONTO OEM CABLE MOUNTING STUD ON LEVER. SEE FIGURE 7 BELOW.
- SECURE THE SLIDE POT ASM TO THE CONTROL PANEL USING THE OEM SCREW IN THE OEM CABLE CLAMP MOUNTING LOCATION. SEE FIGURE 7 BELOW.
- SINCE THE SLIDE POT ASSEMBLY CAN SLIDE BACK AND FORTH IN CLAMP BEFORE SCREW IS TIGHTENED, POSITION SLIDE POT ASSEMBLY SUCH THAT THE FLAT PART OF THE ROD IS AS CLOSE TO FLUSH AS POSSIBLE WITH THE END OF HOUSING AT THE LEVER'S INNER MOST POSITION. SEE FIGURE 5, PAGE 6.
- SECURE SLIDE POT LEVER PUSH ROD ONTO OEM CABLE MOUNTING STUD USING 3/16" PUSH-ON RING AS SHOWN IN FIGURE 7 BELOW.

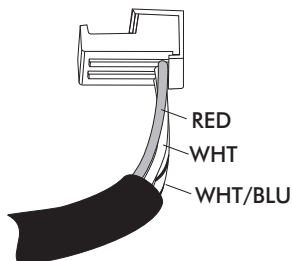
FIGURE 7





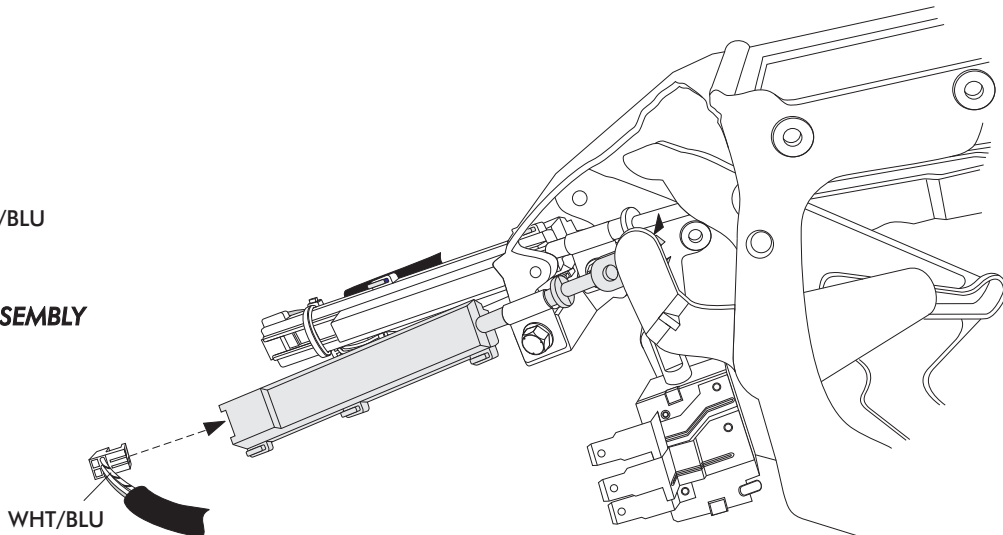
CONTROL HARNESS

- LOCATE THE CONTROL PANEL WIRE HARNESS AND PLUG THE CORRESPONDING WIRES INTO THE CORRECT SLIDE POT ASSEMBLY AS SHOWN IN FIGURE 7a BELOW.

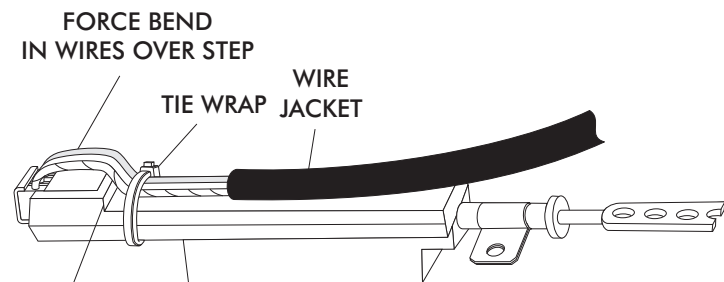


COLD/OFF SLIDE POT ASSEMBLY

FIGURE 7a

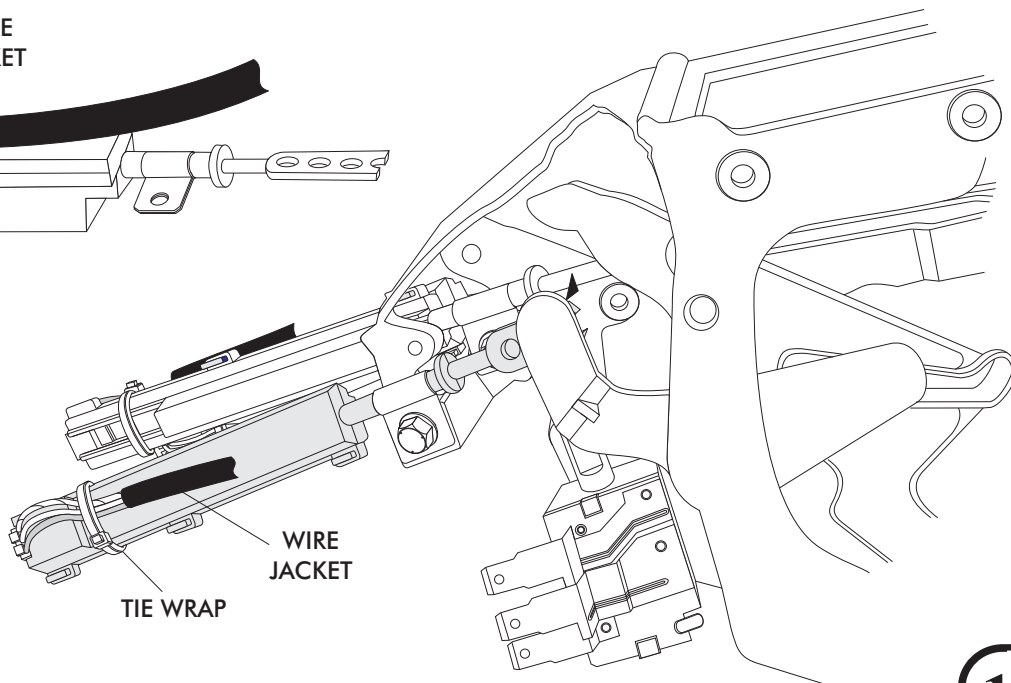


- ONCE WIRES ARE CORRECTLY PLUGGED INTO SLIDE POT ASSEMBLY, SECURE WIRES TO THE SLIDE POT ASSEMBLY USING TIE WRAPS (SUPPLIED). SEE FIGURE 7b BELOW. THE TIE WRAP MUST BE LOCATED BETWEEN THE END OF THE WIRE JACKET AND THE STEP IN THE SLIDE POT HOUSING FORCING A BEND IN EACH WIRE AS THEY PASS OVER THE STEP IN SLIDE POT HOUSING. HEAD OF TIE WRAP MUST FALL ON EDGE OF HOUSING AS SHOWN TO REMAIN TIGHT. ENSURE THAT THE TIE WRAPS ARE SNUG ENOUGH THAT THE WIRES CANNOT MOVE. SEE FIGURE 7b.



STEP IN SLIDE POT HOUSING

FIGURE 7b



WIRE JACKET
TIE WRAP



BLOWER SWITCH

- INSTALL THE BLOWER SWITCH PC BOARD ON O.E.M. BLOWER SWITCH AS SHOWN IN FIGURE 8 BELOW.
- PLUG IN THE REMAINING CONNECTOR WITH THE RED, WHT & WHT/GRN WIRES INTO THE BLOWER SWITCH PC BOARD AS SHOWN IN FIGURE 8 BELOW.

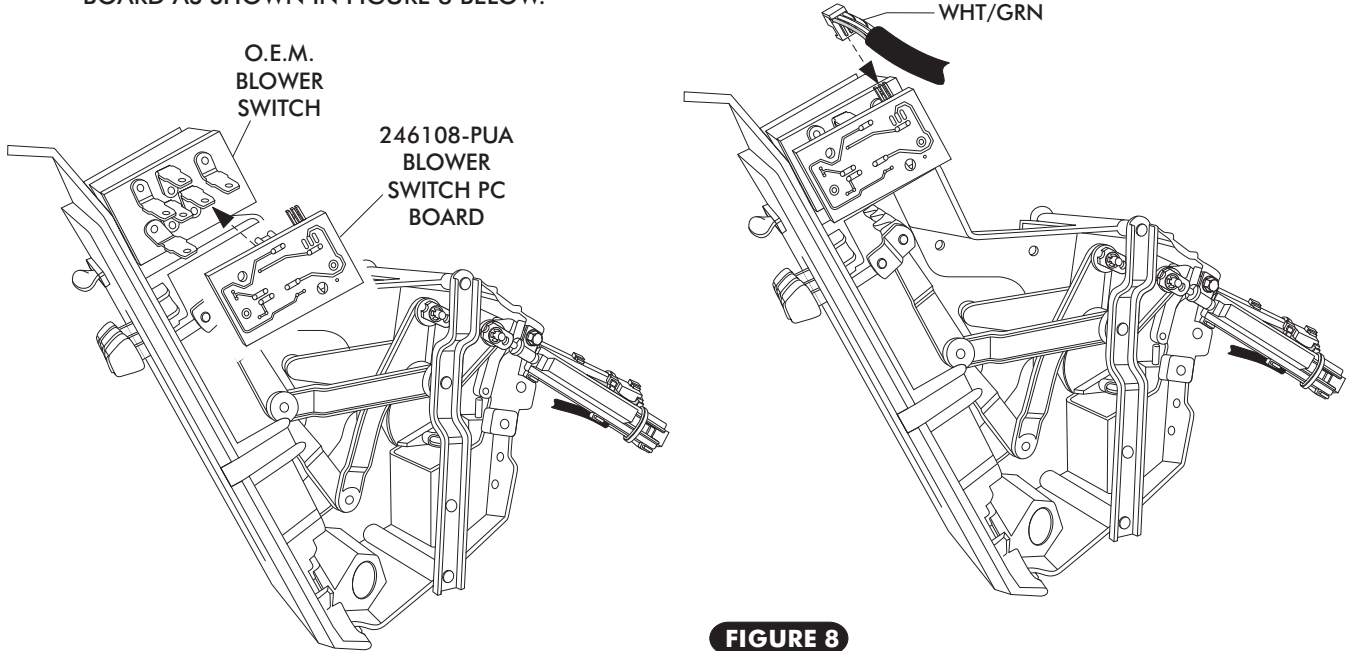


FIGURE 8

CONTROL HARNESS CONT.

- USING THE SUPPLIED TIE-WRAPS, TIE THE WIRES TO THE CONTROL PANEL AS SHOWN IN FIGURE 10 BELOW. CONFIRM THAT WIRES ARE SECURED AND DO NOT INTERFERE WITH LEVER OPERATION OR SLIDE POT ASSEMBLY.

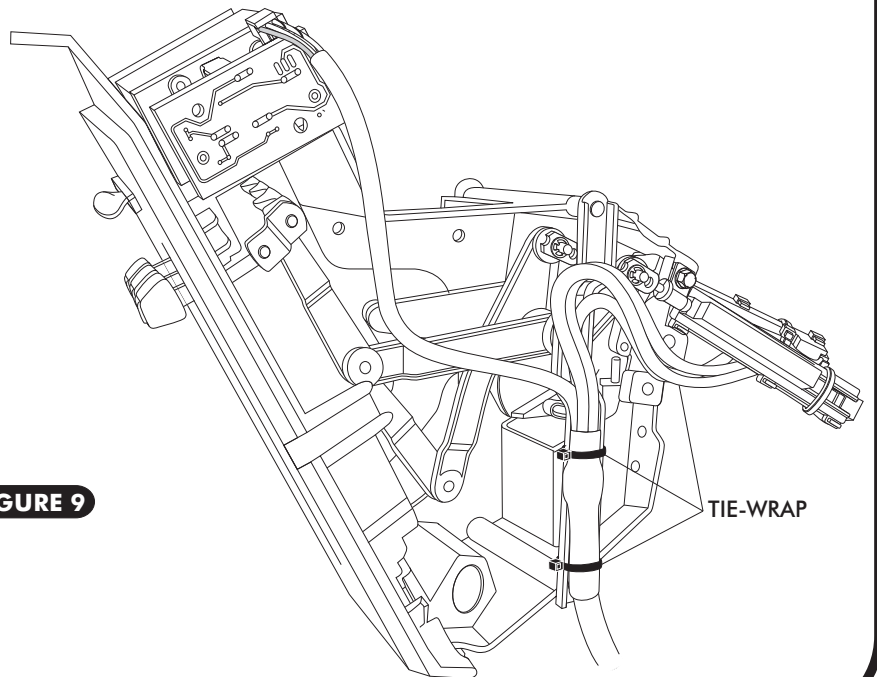


FIGURE 9



FINAL STEPS

- RE-INSTALL CONTROL PANEL IN DASH.
- PLUG THE WIRING HARNESS INTO THE ECU MODULE ON SUB CASE. SEE FIGURE 10 BELOW.
- WIRE ACCORDING TO WIRING DIAGRAM ON PAGE 14.
- CONTROL PANEL CALIBRATION PROCEDURE AND OPERATION INSTRUCTIONS:

CALIBRATING THE CONTROL PANEL WILL SET THE RANGE OF TRAVEL FOR THE SLIDE POTS CONNECTED TO THE OEM CONTROL PANEL LEVERS. PERFORMING THIS PROCEDURE WILL SET THE LIMITS OF THE SLIDE POTS AT THEIR HIGHEST AND LOWEST POINTS

LOCATE THE GRAY WIRE WITH AN UNUSED CONNECTOR IN THE WIRING HARNESS NEAR THE TWO CABLE HARNESS RELAYS. THE WIRE IS LABELED PRGM ON THE WIRING DIAGRAM ON PAGE 14.

IT WILL BE NECESSARY TO GROUND THE GRAY WIRE FOR APPROXIMATELY FIVE SECONDS WHILE MOVING THE CONTROLS SO IT IS SOMETIMES HELPFUL TO ATTACH ONE END OF THE WHITE JUMPER WIRE TO THE VEHICLE'S GROUND (FOR EXAMPLE THE CHASSIS) AND HAVE THE OTHER END READY TO CONNECT TO THE GRAY PRGM WIRE WHEN THE PROCEDURE REQUIRES IT.

TO CALIBRATE THE CONTROL PANEL FOLLOW THE CALIBRATION PROCEDURES ON PAGE 13.

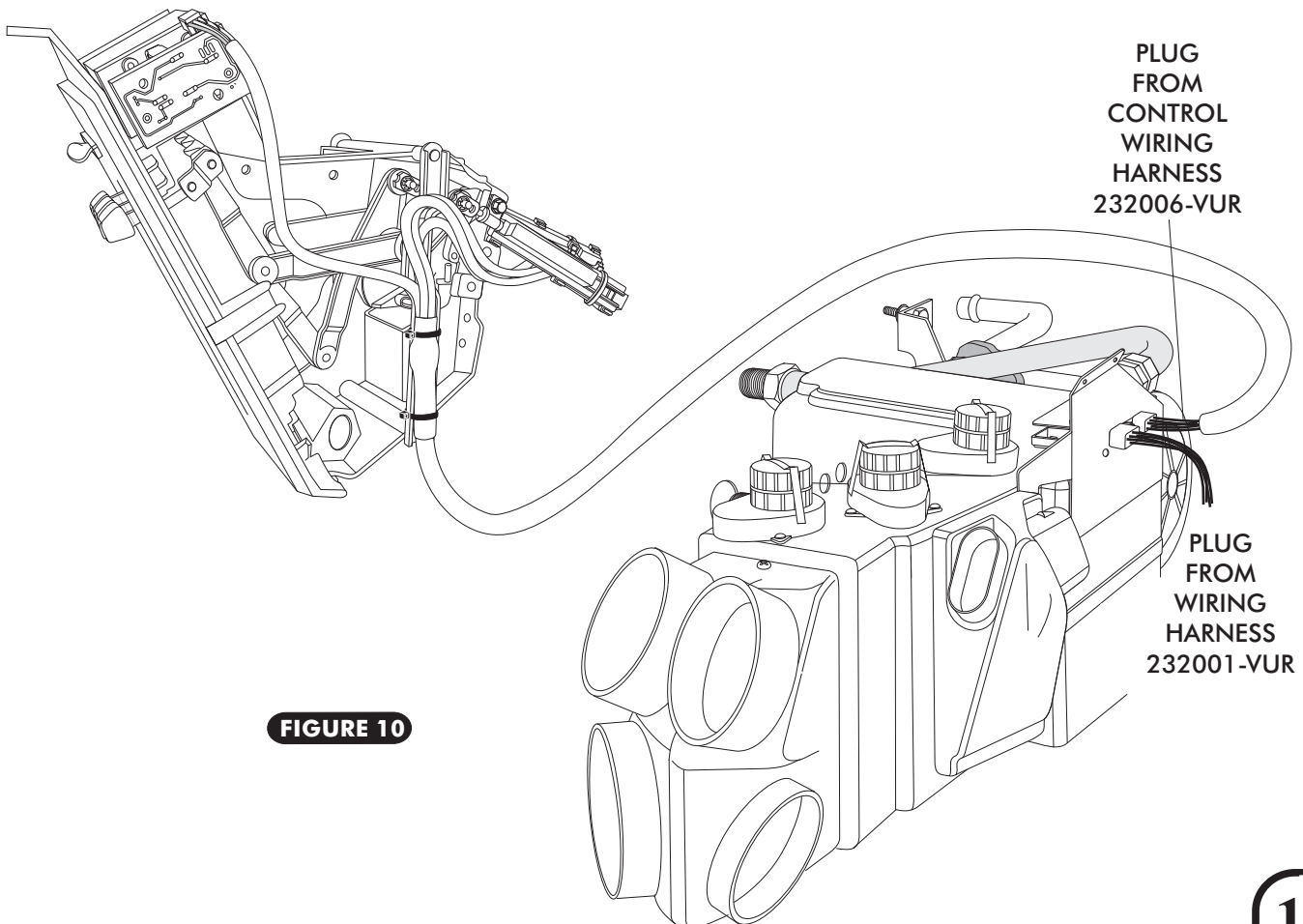


FIGURE 10



1969 CAMARO w/ AC CNTRL PNL

CONTROL PANEL CALIBRATION PROCEDURE

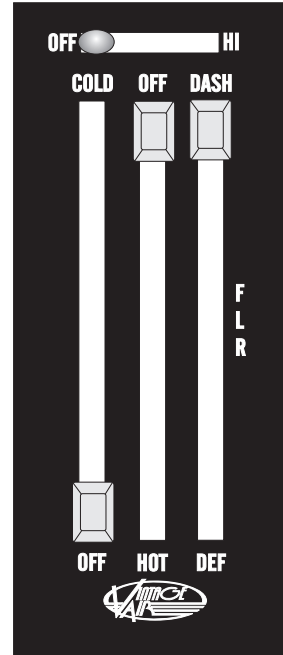
1. TURN THE IGNITION SWITCH ON (DO NOT START THE ENGINE)
2. CONNECT THE WHITE JUMPER WIRE TO VEHICLE'S GROUND (FOR EXAMPLE THE VEHICLE CHASSIS). ENSURE THAT THE GRAY WIRE IS NOT GROUNDED. DO NOT CONNECT JUMPER WIRE TO THE GRAY PRGM WIRE.

23140-VUW
GROUND WIRE

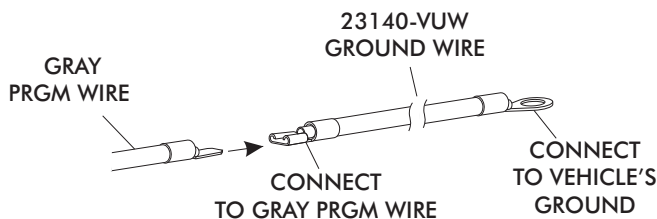


CONNECT
TO VEHICLE'S
GROUND

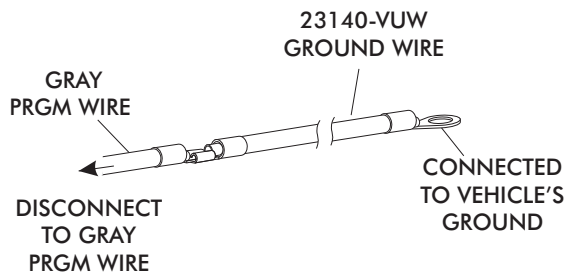
3. MOVE ALL OF THE CONTROL LEVERS TO THEIR MAXIMUM POSITIONS, AS SHOWN.



4. GROUND THE GRAY WIRE BY CONNECTING THE GRAY PRGM WIRE & WHITE JUMPER WIRE FOR APPROXIMATELY 5 SECONDS (THE BLOWER WILL CHANGE SPEEDS WHEN STEP FOUR IS COMPLETE)



6. DISCONNECT THE GRAY WIRE FROM THE WHITE GROUND JUMPER WIRE (THE BLOWER WILL CHANGE SPEEDS WHEN STEP SIX IS COMPLETE)



7. START THE ENGINE AND TEST ALL OF THE CONTROLS TO ENSURE THAT THE INTENDED RESULTS WERE ACCOMPLISHED.
8. DISCONNECT THE WHITE JUMPER WIRE FROM VEHICLE'S GROUND.

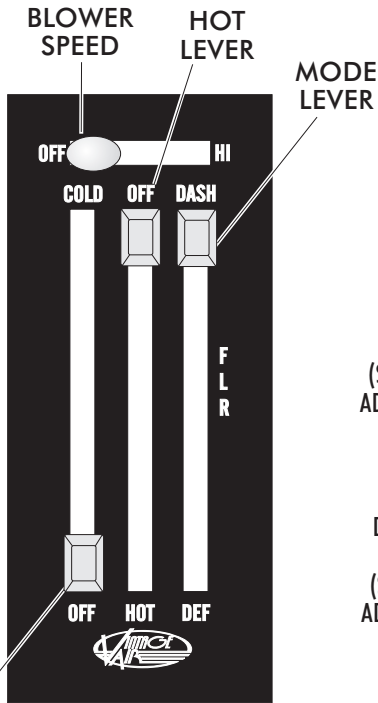
NOTE: THIS PROCEDURE MAY BE REPEATED IF NECESSARY.

*** WHEN FINISHED, TAPE OVER PROGRAM WIRE CONNECTOR WITH ELECTRICAL TAPE TO PREVENT ACCIDENTAL CONTACT WITH CHASSIS GROUND.**



OPERATION OF CONTROLS

NOTE: WHEN BATTERY POWER IS FIRST CONNECTED TO THE ECU, THE COMPUTER GOES THROUGH AN INITIALIZATION SEQUENCE. THIS INITIALIZATION MAY TAKE UP TO 30 SECONDS. DURING INITIALIZATION THE BLOWER WILL NOT OPERATE, BUT THE DOORS INSIDE THE UNIT WILL BE OPERATING. A LOW BATTERY OR DISCONNECTING THE BATTERY MAY ALSO TRIGGER A RE-INITIALIZATION. DURING START UP, A LOW BATTERY MAY DROP BELOW 7 VOLTS, TRIGGERING RE-INITIALIZATION.



SYSTEM OFF

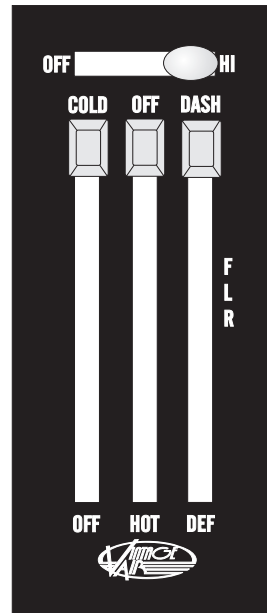
COLD LEVER

BLOWER SPEED
THIS LEVER CONTROLS THE BLOWER SPEED, FROM OFF TO HI

COLD LEVER
IN A/C MODE SLIDE THE COLD LEVER ALL THE WAY UP TO THE COLD POSITION, FOR MAXIMUM COOLING (SLIDE LEVER UP OR DOWN TO ADJUST DESIRED TEMPERATURE)

HOT LEVER
IN HEAT MODE SLIDE THE HOT LEVER ALL THE WAY DOWN TO THE HOT POSITION, FOR MAXIMUM HEATING (SLIDE LEVER UP OR DOWN TO ADJUST DESIRED TEMPERATURE)

MODE LEVER
SLIDE THE LEVER TO THE "DASH" POSITION



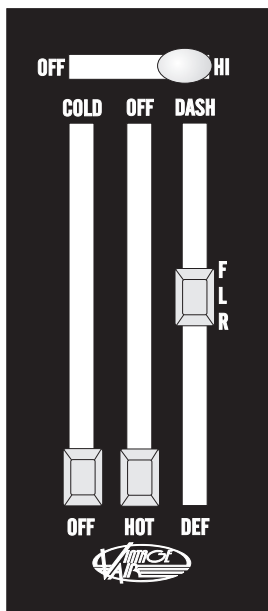
A/C MODE

BLOWER SPEED
SLIDE LEVER TO THE RIGHT TO DESIRED BLOWER SPEED, FROM OFF TO HI

COLD LEVER
IN A/C MODE SLIDE THE COLD LEVER ALL THE WAY UP TO THE COLD POSITION, TO ENGAGE COMPRESSOR. FOR MAXIMUM COOLING (SLIDE LEVER UP OR DOWN TO ADJUST DESIRED TEMPERATURE)

HOT LEVER
IN A/C MODE SLIDE THE HOT LEVER ALL THE WAY UP TO THE OFF POSITION

MODE LEVER
SLIDE THE LEVER TO THE "DASH" POSITION



HEAT MODE

BLOWER SPEED
SLIDE LEVER TO THE RIGHT TO DESIRED BLOWER SPEED, FROM OFF TO HI

COLD LEVER
IN HEAT MODE SLIDE THE COLD LEVER ALL THE WAY DOWN TO THE OFF POSITION

HOT LEVER
IN HEAT MODE SLIDE THE HOT LEVER ALL THE WAY DOWN TO THE HOT POSITION, FOR MAXIMUM HEATING (SLIDE LEVER UP OR DOWN TO ADJUST DESIRED TEMPERATURE)

MODE LEVER
SLIDE THE LEVER TO THE "FLR" POSITION



DEFROST/ DE-FOG MODE

BLOWER SPEED
SLIDE LEVER TO THE RIGHT TO DESIRED BLOWER SPEED, FROM OFF TO HI

COLD LEVER
IN DEFROST MODE SLIDE THE COLD LEVER ALL THE WAY UP TO THE COLD POSITION, TO ENGAGE COMPRESSOR. FOR MAXIMUM COOLING (SLIDE LEVER UP OR DOWN TO ADJUST DESIRED TEMPERATURE)

HOT LEVER
IN DEFROST MODE SLIDE THE HOT LEVER ALL THE WAY DOWN TO THE HOT POSITION, FOR MAXIMUM HEATING (SLIDE LEVER UP OR DOWN TO ADJUST DESIRED TEMPERATURE)

MODE LEVER
SLIDE THE LEVER TO THE "DEF" POSITION



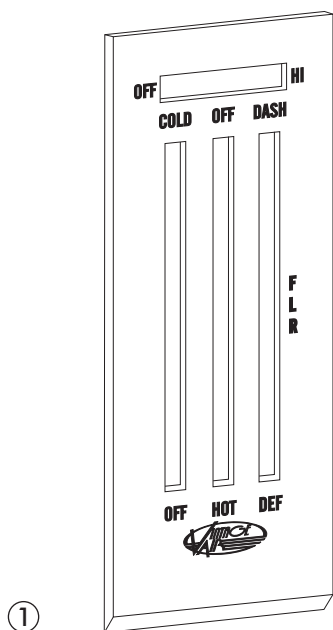
1969 CAMARO w/ AC CNTRL PNL

CONTROL KIT 474269

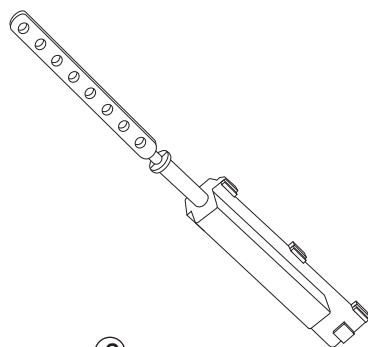
CONTROL KIT PACKING LIST

No.	QTY.	PART No.	DESCRIPTION	
1.	1	484169-PCR	1969 CAMARO w/ AC PLACARD w/ BLACK BACKING SHEET	_____
2.	3	112002-SUA	SLIDE POT ASM	_____
3.	1	232006-VUR	GEN IV UNIVERSAL CONTROL HARNESS (TYPE B)	_____
4.	3	65976-VUE	3/16" PUSH-ON RING	_____
5.	3	491010-VUR	SLIDE POT CLAMP	_____
6.	5	21301-VUP	4" TIE WRAP	_____
7.	1	23140-VUW	GROUND WIRE	_____
8.	1	246108-PUA	BLOWER SWITCH PC BOARD	_____

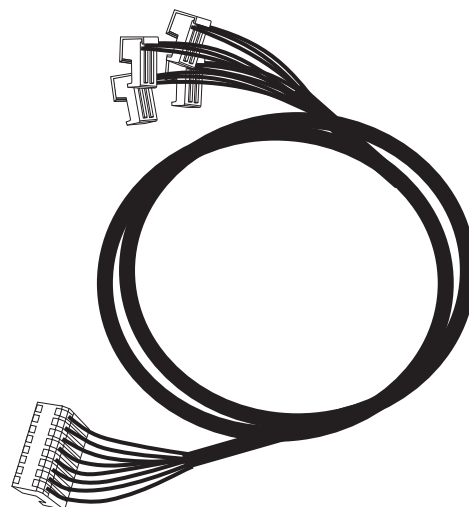
CHECKED BY: _____
 PACKED BY: _____
 DATE: _____



①



②

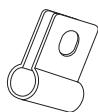


③

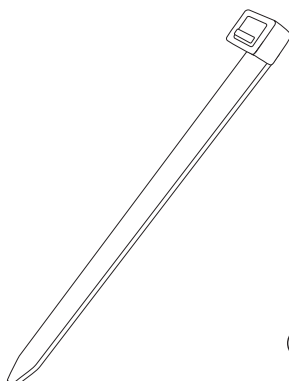
④



⑤



⑥



⑦



⑧

