

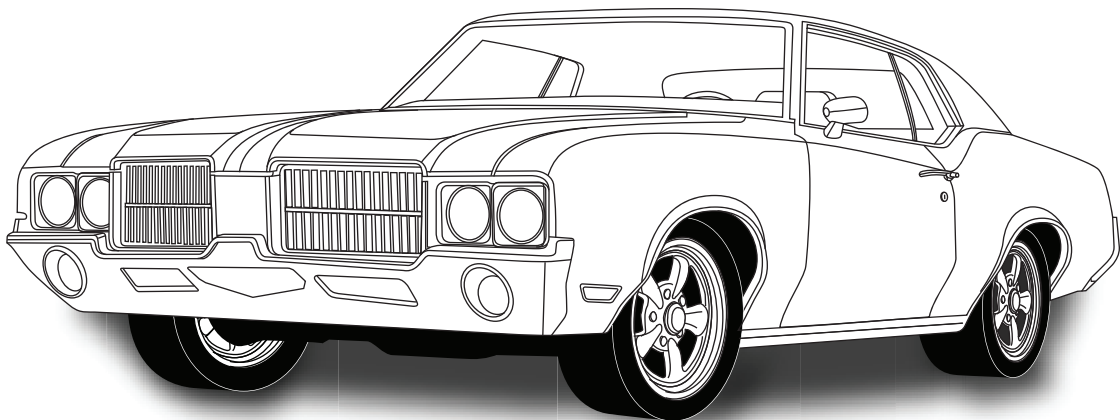


an ISO 9001:2008 Registered Company

1968-72 CUTLASS

CONDENSER WITH DRIER

021172



18865 GOLL ST. - SAN ANTONIO, TX. - 78266 ph.210-654-7171 - fax 210-654-3113



TABLE OF CONTENTS

PAGES

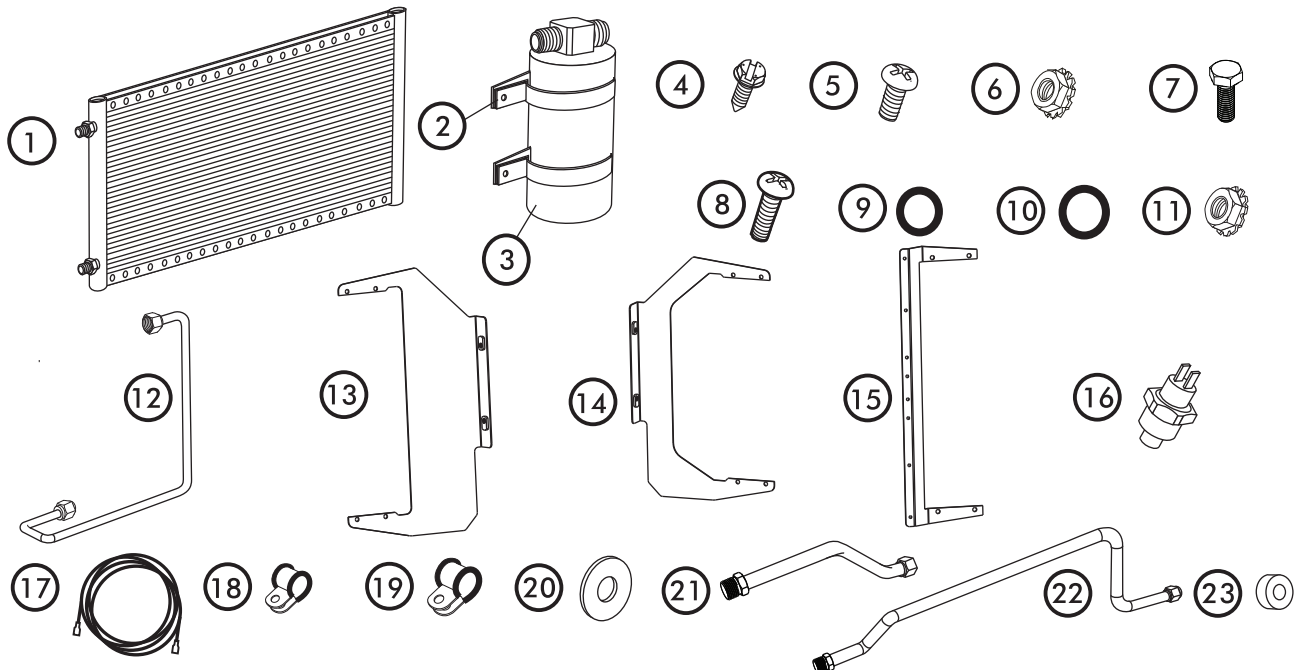
1. COVER
2. TABLE OF CONTENTS
3. PACKING LIST/PARTS DISCLAIMER
4. MOUNTING BRACKET INSTALLATION
5. DRIER BRACKET, DRIER AND SAFETY SWITCH INSTALLATION
6. HARDLINE AND CONDENSER INSTALLATION
7. HARDLINE INSTALLATION CONT. & ADEL CLAMP INSTALLATION
8. PACKING LIST



**CONDENSER KIT
021172**

No.	QTY.	PART No.	DESCRIPTION
1.	1	03767-VUC	14 X 24 PARALLEL FLOW COND.
2.	2	07113-VUB	DRIER CLAMP
3.	1	07321-VUC	DRIER
4.	2	18247-VUB	#10 X 1/2 SHEET METAL SCREW
5.	12	18249-VUB	10-24 X 3/8 PAN HEAD SCREW
6.	12	18260-VUB	10-24 NUT W/STAR WASHER
7.	4	18287-VUB	1/4-20 X 1/2 HEX BOLT
8.	2	18250-VUB	10-32 X 1/2 PAN HEAD SCREW
9.	3	33857-VUF	#6 O-RING
10.	1	33858-VUF	#8 O-RING
11.	2	18251-VUB	10-32 NUT W/STAR WASHER
12.	1	35368-VCG	#6 DRIER/COND HARDLINE
13.	1	644098	BRKT 68-72 CUTLASS COND DRIVER SIDE ASM
14.	1	644099	BRKT 68-72 CUTLASS COND PASS SIDE ASM
15.	1	65998-VUB	14 3/4" UNIVERSAL DRIER BRACKET
16.	1	11079-VUS	MALE BINARY SWITCH
17.	1	23135-VUW	COMPRESSOR LEAD
18.	2	31600-VUD	#2 ADEL CLAMP
19.	1	31603-VUD	#4 ADEL CLAMP
20.	1	18123-VUB	3/16 FLAT WASHER
21.	1	091179	HARDLINE 68-72 CUTLASS #8 COND/COMP
22.	1	091180	HARDLINE 68-72 CUTLASS #6 DRIER/CORE
23.	1	49705-VUI	NYLON FLAT WASHER 1/8

****BEFORE BEGINNING INSTALLATION OPEN ALL PACKAGES AND CHECK CONTENTS OF SHIPMENT PLEASE REPORT ANY SHORTAGES DIRECTLY TO VINTAGE AIR WITHIN 15 DAYS. AFTER 15 DAYS, VINTAGE AIR WILL NOT BE RESPONSIBLE FOR MISSING OR DAMAGED ITEMS.**

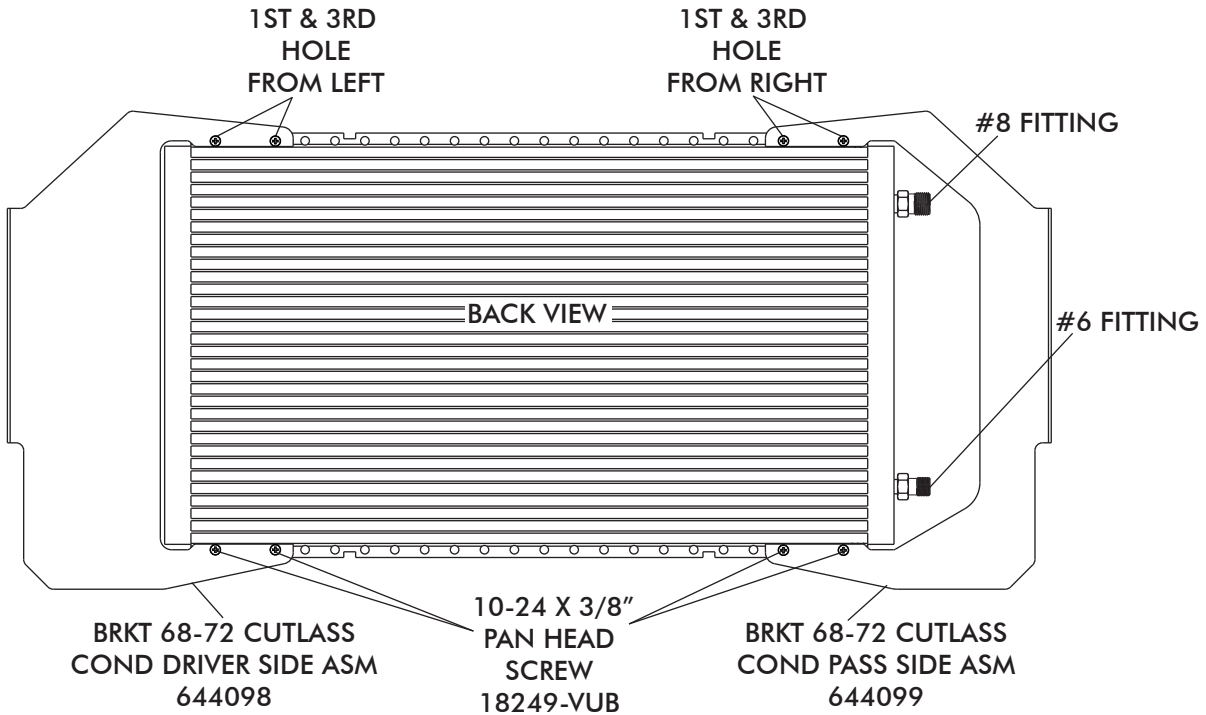


NOTE: IMAGES MAY NOT DEPICT ACTUAL PARTS AND QUANTITIES. REFER TO PACKING LIST FOR ACTUAL PARTS AND QUANTITIES

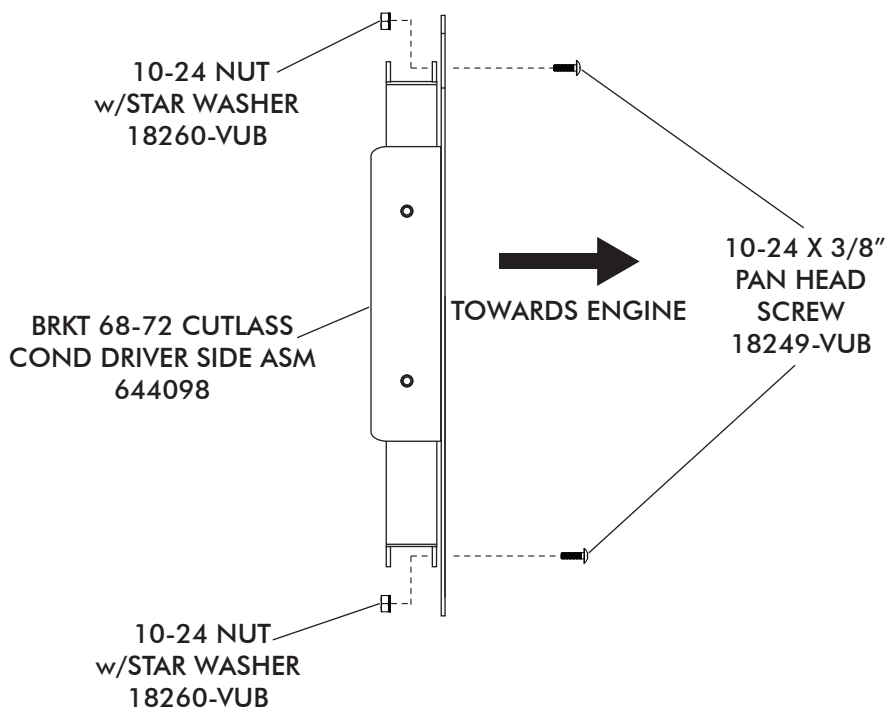


MOUNTING BRACKET INSTALLATION

□ INSTALL MOUNTING BRACKETS ON TO CONDENSER USING 10-24 x 3/8" PAN HEAD SCREWS AND 10-24 NUTS w/STAR WASHERS AS SHOWN BELOW.



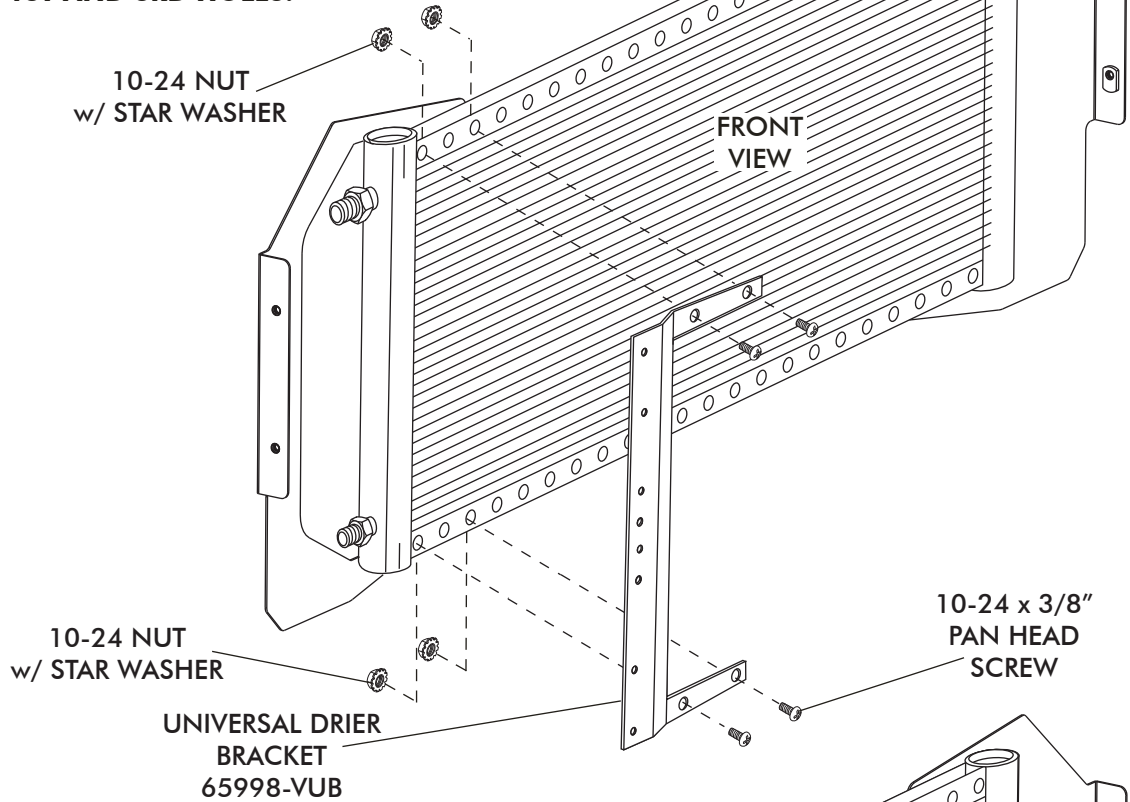
SIDE VIEW OF CONDENSER





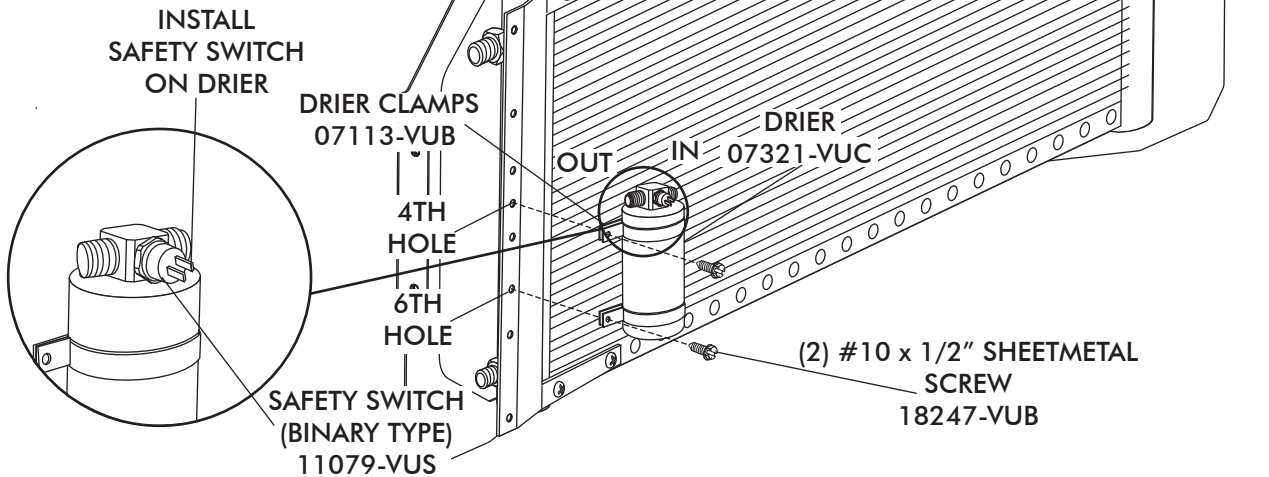
DRIER BRACKET INSTALLATION

- INSTALL UNIVERSAL DRIER BRACKET ON TO CONDENSER USING 10-24 X 3/8" PAN HEAD SCREWS AND 10-24 NUTS WITH STAR WASHERS. **NOTE: BRACKET MOUNTS THROUGH 1ST AND 3RD HOLES.**



DRIER & BINARY SWITCH INSTALLATION

- INSTALL DRIER CLAMPS ON DRIER AS SHOWN.
- USING #10 x 1/2" SHEETMETAL SCREWS, INSTALL DRIER ON BRACKET IN THE 4TH AND 6TH HOLES FROM THE TOP AS SHOWN.
- INSTALL BINARY SWITCH.





HARDLINE INSTALLATION

- LUBRICATE 2-#6 O-RINGS AND INSTALL THE #6 DRIER/CONDENSER HARDLINE AS SHOWN. TIGHTEN FITTINGS. SEE FIGURE 1. **(OIL SUPPLIED IN HOSE KIT)**

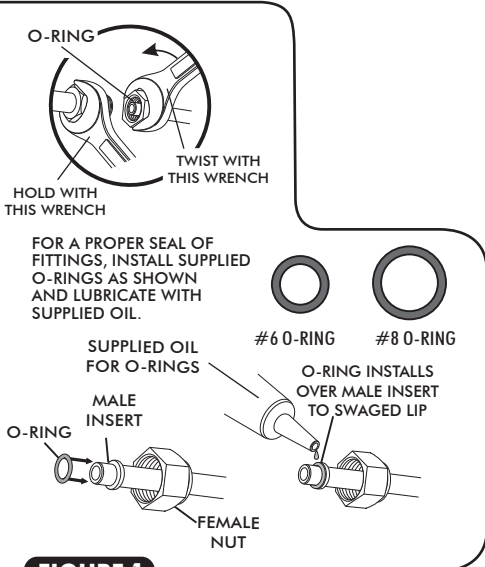
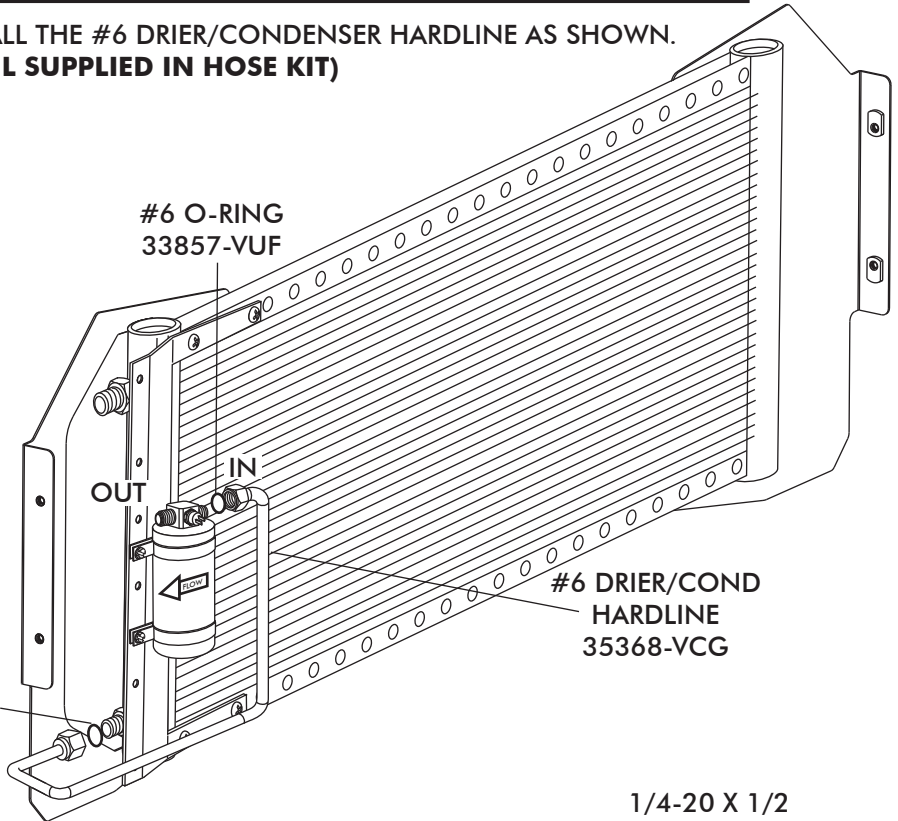


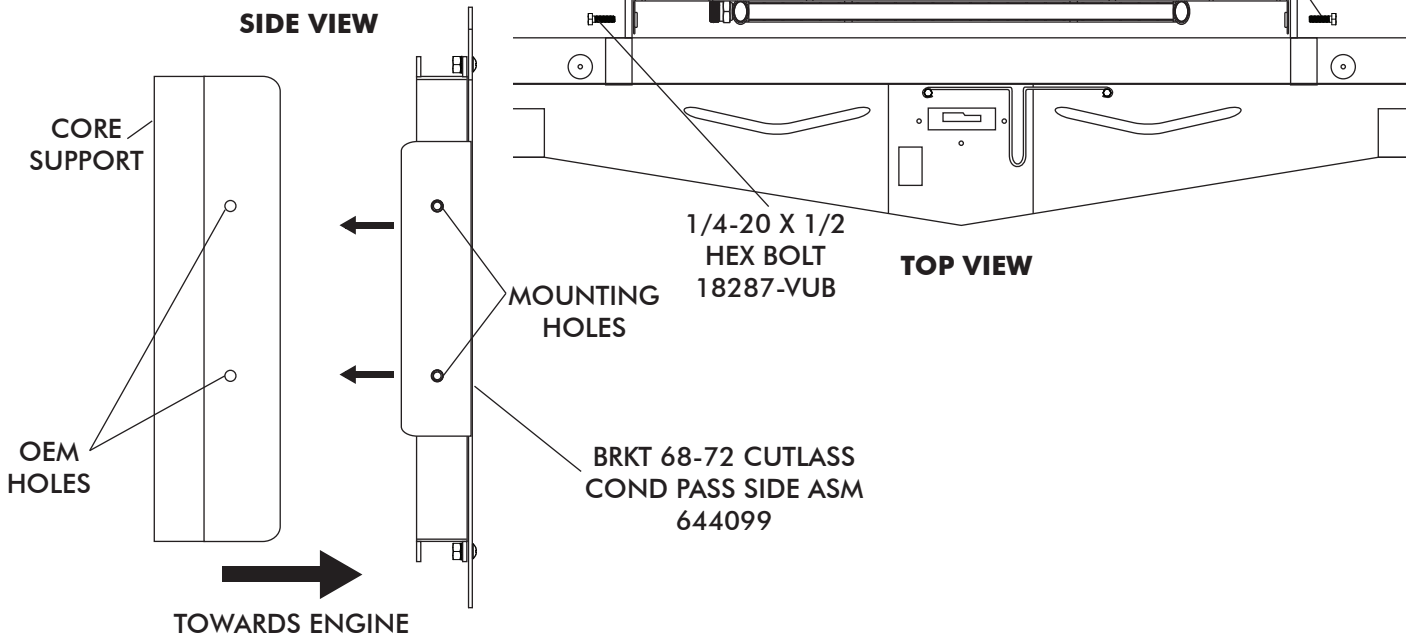
FIGURE 1



CONDENSER INSTALLATION

- INSTALL CONDENSER W/BRACKETS TO CORE SUPPORT WITH (4) 1/4-20 X 1/2 HEX BOLTS AS SHOWN BELOW.

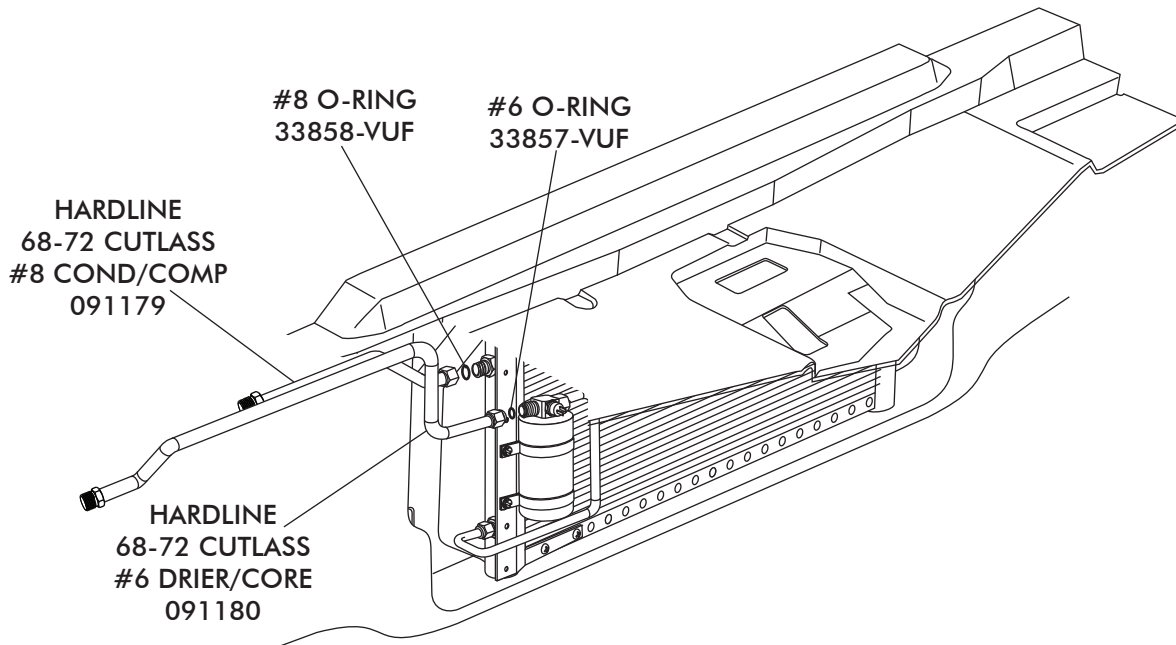
1/4-20 X 1/2
HEX BOLT
18287-VUB





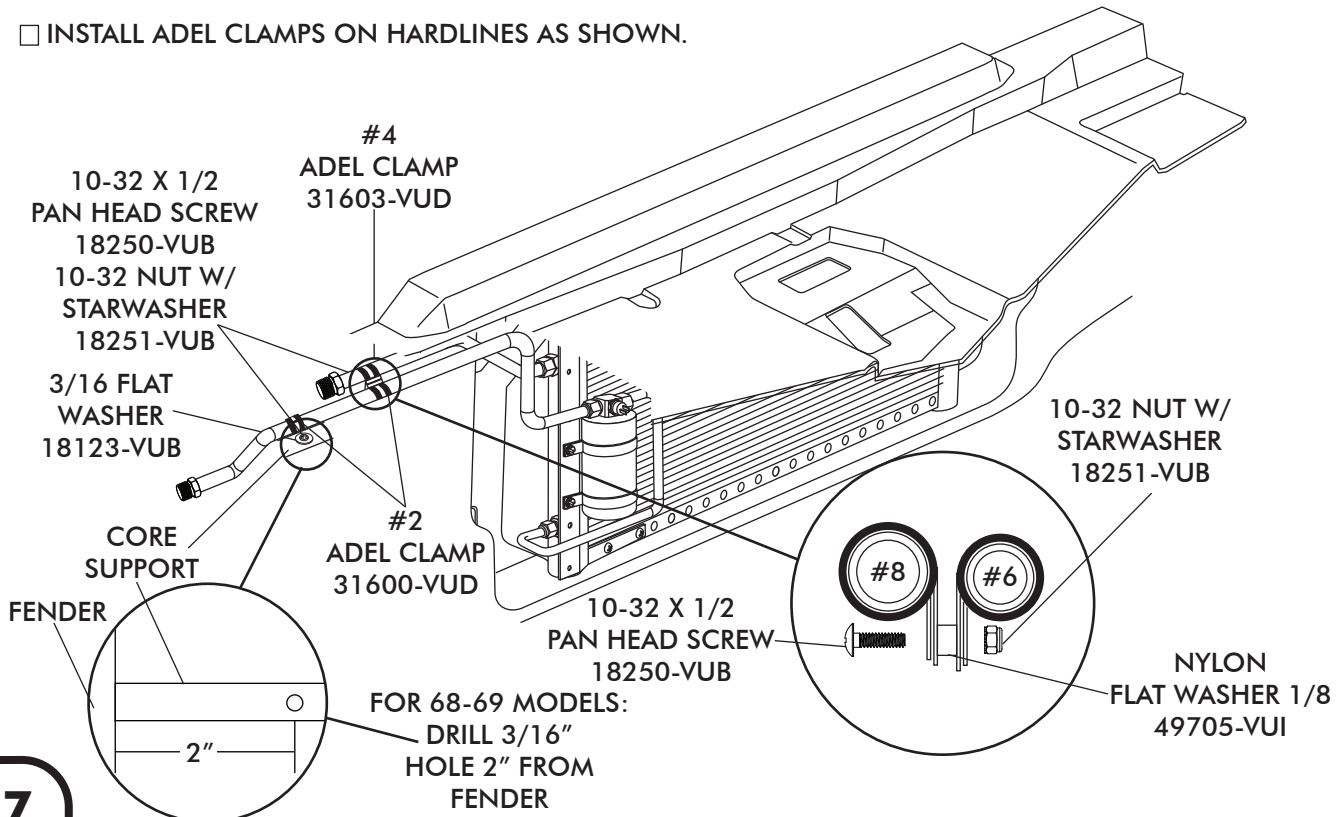
HARDLINE INSTALLATION CONT.

- LUBRICATE #6 AND #8 O-RINGS AND INSTALL HARDLINES AS SHOWN. TIGHTEN FITTINGS. SEE FIGURE 1, PAGE 6.



ADEL CLAMP INSTALLATION

- INSTALL ADEL CLAMPS ON HARDLINES AS SHOWN.

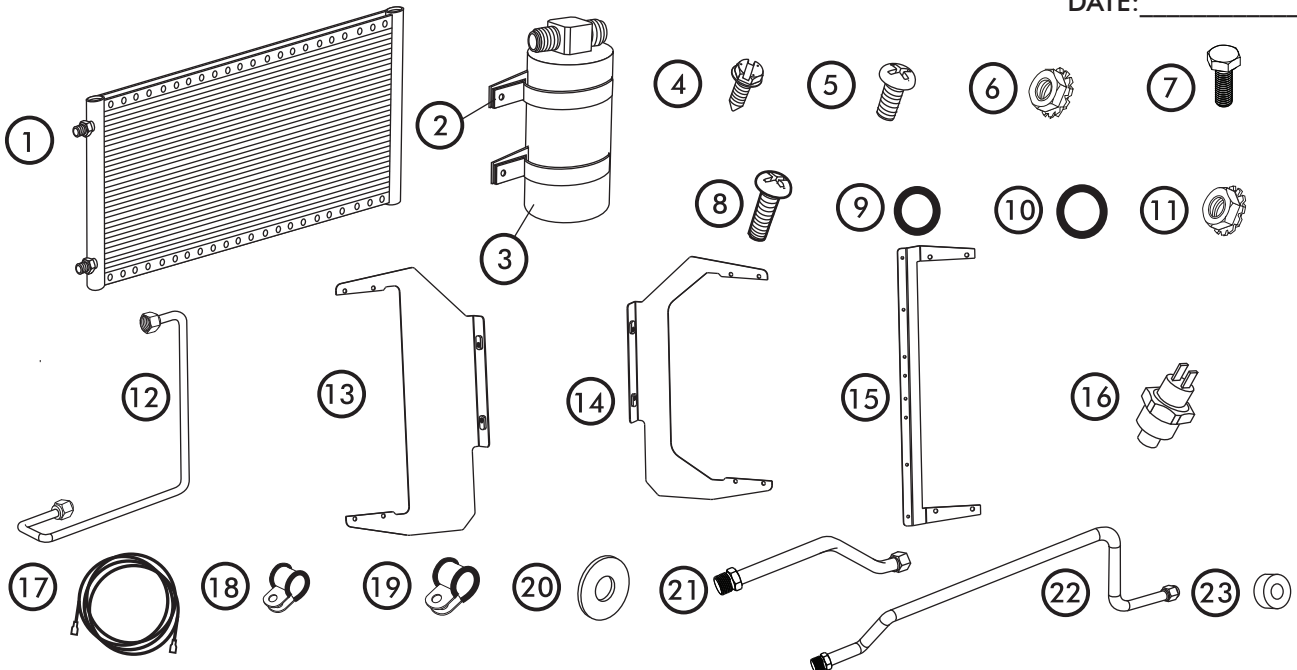




**CONDENSER KIT
021172**

No.	QTY.	PART No.	DESCRIPTION
1.	1	03767-VUC	14 X 24 PARALLEL FLOW COND.
2.	2	07113-VUB	DRIER CLAMP
3.	1	07321-VUC	DRIER
4.	2	18247-VUB	#10 X 1/2 SHEET METAL SCREW
5.	12	18249-VUB	10-24 X 3/8 PAN HEAD SCREW
6.	12	18260-VUB	10-24 NUT W/STAR WASHER
7.	4	18287-VUB	1/4-20 X 1/2 HEX BOLT
8.	2	18250-VUB	10-32 X 1/2 PAN HEAD SCREW
9.	3	33857-VUF	#6 O-RING
10.	1	33858-VUF	#8 O-RING
11.	2	18251-VUB	10-32 NUT W/STAR WASHER
12.	1	35368-VCG	#6 DRIER/COND HARDLINE
13.	1	644098	BRKT 68-72 CUTLASS COND DRIVER SIDE ASM
14.	1	644099	BRKT 68-72 CUTLASS COND PASS SIDE ASM
15.	1	65998-VUB	14 3/4" UNIVERSAL DRIER BRACKET
16.	1	11079-VUS	MALE BINARY SWITCH
17.	1	23135-VUW	COMPRESSOR LEAD
18.	2	31600-VUD	#2 ADEL CLAMP
19.	1	31603-VUD	#4 ADEL CLAMP
20.	1	18123-VUB	3/16 FLAT WASHER
21.	1	091179	HARDLINE 68-72 CUTLASS #8 COND/COMP
22.	1	091180	HARDLINE 68-72 CUTLASS #6 DRIER/CORE
23.	1	49705-VUI	NYLON FLAT WASHER 1/8

CHECKED BY: _____
 PACKED BY: _____
 DATE: _____



**NOTE: IMAGES MAY NOT DEPICT ACTUAL PARTS AND QUANTITIES.
 REFER TO PACKING LIST FOR ACTUAL PARTS AND QUANTITIES**