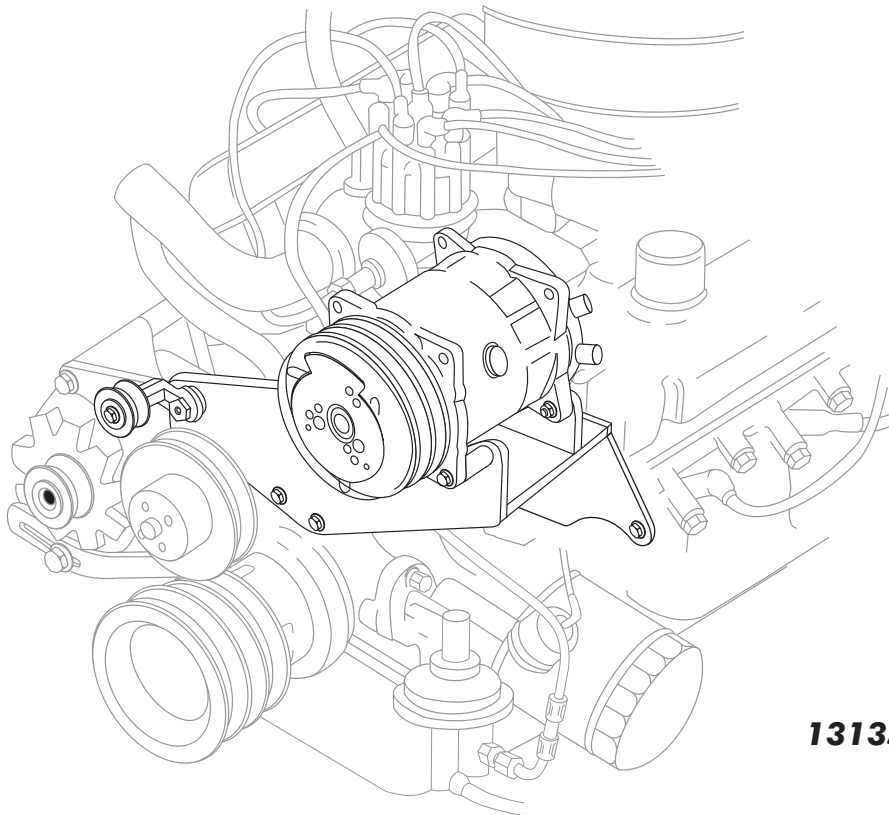




351C FORD

COMPRESSOR BRACKET

w & w/o POWER STEERING



131351

18865 GOLL ST. - SAN ANTONIO, TX. - 78266 ph.210-654-7171 - fax 210-654-3113



Table of Contents

PAGES

1. COVER
2. TABLE OF CONTENTS
3. PACKING LIST
4. INSTALLATION INSTRUCTIONS
5. IDLER & COMPRESSOR BRACKET INSTALLATION
6. COMPRESSOR INSTALLATION
7. BRACKET KIT PACKING LIST



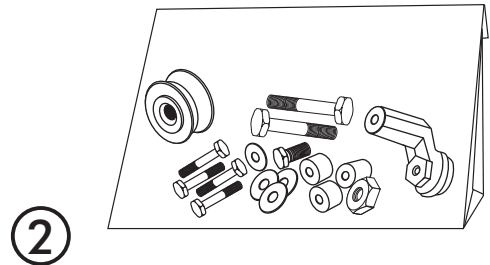
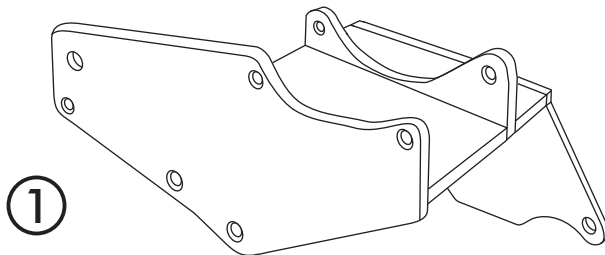
351C FORD COMPRESSOR BRACKET

351C FORD COMPRESSOR BRACKET

BRACKET KIT
131351

No.	QTY.	PART No.	DESCRIPTION
1.	1	137003	351C FORD COMP. MOUNTING BRKT.
2.	1	191004	HARDWARE KIT

**** BEFORE BEGINNING INSTALLATION OPEN ALL PACKAGES AND CHECK CONTENTS OF SHIPMENT. PLEASE REPORT ANY SHORTAGES DIRECTLY TO VINTAGE AIR WITHIN 15 DAYS. AFTER 15 DAYS, VINTAGE AIR WILL NOT BE RESPONSIBLE FOR MISSING OR DAMAGED ITEMS.**





351C FORD COMPRESSOR BRACKET

INSTALLATION INSTRUCTIONS

BEFORE INSTALLATION, CHECK FOR PROPER OPERATION OF ALL COMPONENTS (RADIO, LIGHTS, WIPERS, ETC.). STUDY THE INSTRUCTIONS, ILLUSTRATIONS AND DIAGRAMS. FOR EASE OF INSTALLATION CHECK OFF (✓) EACH PROCEDURE PRIOR TO MOVING ON TO NEXT STEP.

STEP(S)

- 1. REMOVE O.E.M ENGINE FAN, FAN PULLEY AND BELTS. (RETAIN)



TO EASE INSTALLATION, MAKE SURE THE ENGINE IS NOT HOT AND RELEASE THE PRESSURE ON THE RADIATOR CAP.

COMPRESSOR MOUNTING BRACKET INSTALLATION

- 4. REMOVE THE TOP (3) WATER PUMP MOUNTING BOLTS (DISCARD). **SEE FIGURE 1 BELOW**
- 5. LOOSELY ATTACH IDLER ASSEMBLY TO THE COMPRESSOR MOUNTING BRACKET. **SEE FIGURE 2 PAGE 5**
- 6. ATTACH COMPRESSOR MOUNTING BRACKET TO THE ENGINE USING, (3) 3/8 BOLTS w/ LOCK WASHERS AND (3) SPACERS. (NOTE: THE LEFT MOUNTING BOLT WITH LOCK WASHER WILL GO THROUGH THE COMPRESSOR BRACKET WITH A .250 SPACER BETWEEN THE COMPRESSOR BRACKET AND WATER PUMP. THE TOP CENTER MOUNTING BOLT WITH LOCK WASHER WILL GO THROUGH THE COMPRESSOR BRACKET WITH A .250 SPACER BETWEEN THE COMPRESSOR BRACKET AND THE WATER PUMP. NOTE: THE RIGHT MOUNTING BOLT WITH LOCK WASHER WILL GO THROUGH THE COMPRESSOR BRACKET WITH A .750 SPACER (w/o POWER STEERING) OR A .563 SPACER (w/ POWER STEERING) WILL GO BETWEEN THE COMPRESSOR BRACKET AND WATER PUMP. SECURE THE REAR PORTION OF THE COMPRESSOR MOUNTING BRACKET TO THE HEAD USING (3) 7/16-14 x 1 1/4 BOLT w/ LOCK WASHER, AND SPACER. THE (3) .750 x .469 x .375 SPACER WILL GO BETWEEN THE COMPRESSOR MOUNTING BRACKET AND THE HEAD. **SEE FIGURE 3 PAGE 5.**

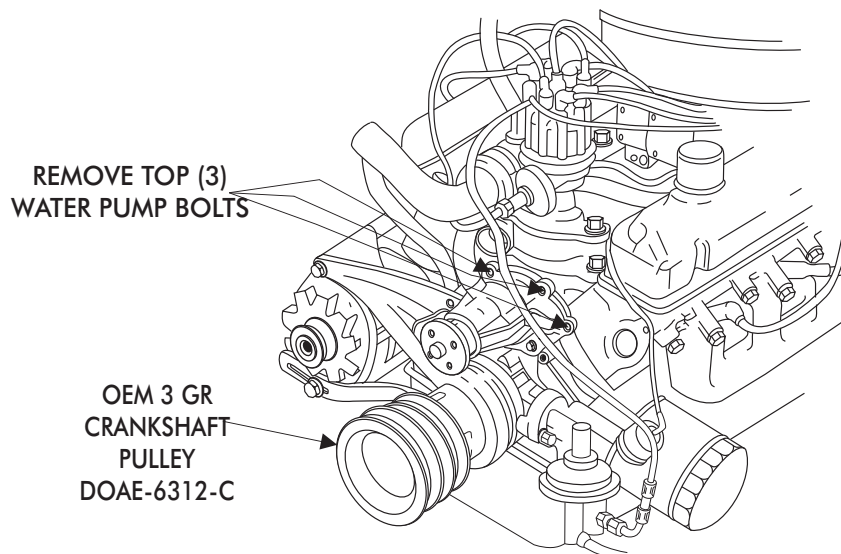


FIGURE 1



351C FORD COMPRESSOR BRACKET

IDLER ASSEMBLY INSTALLATION

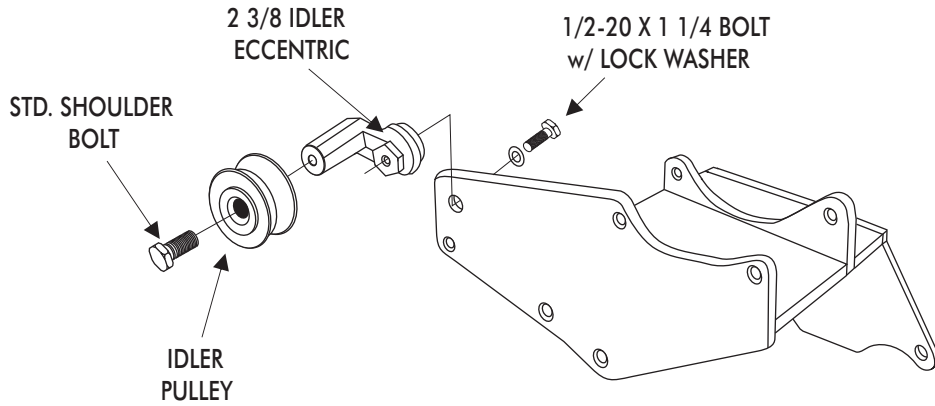


FIGURE 2

COMPRESSOR MOUNTING BRACKET INSTALLATION

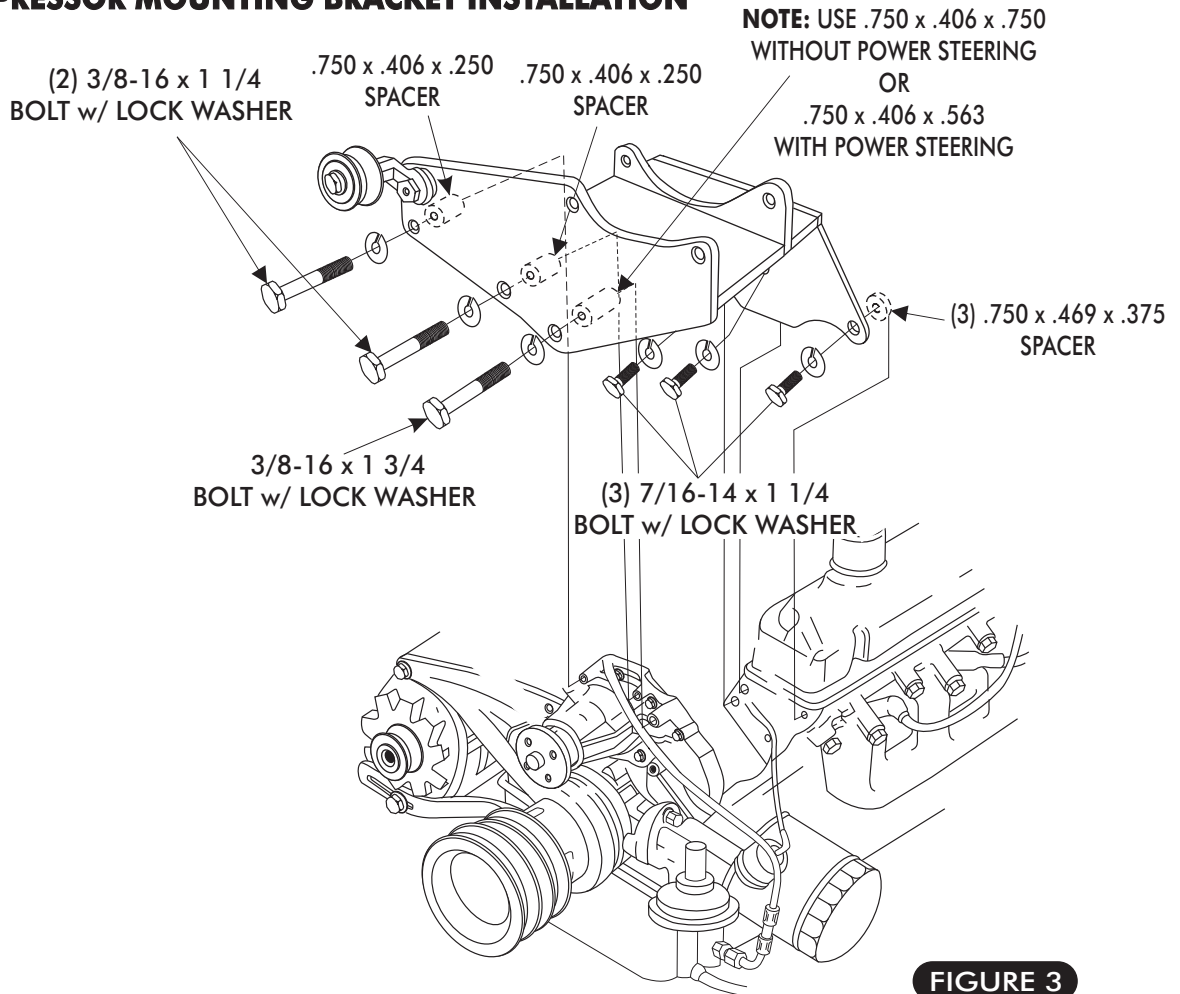


FIGURE 3

COMPRESSOR INSTALLATION

- 7. ATTACH THE COMPRESSOR TO MOUNTING BRACKET; USING (2) 3/8-16 x 2 BOLTS w/ FLAT WASHER AND, .563 SPACERS, AND 3/8 LOCKNUT TO FRONT UPRIGHT OF COMPRESSOR MOUNTING BRACKET. USING (2) 3/8-16 x 1 1/2 BOLTS w/ FLAT WASHER, AND 3/8 LOCKNUT TO ATTACH THE REAR OF THE COMPRESSOR TO REAR UPRIGHT OF COMPRESSOR MOUNTING BRACKET. **SEE FIGURE 4 BELOW**

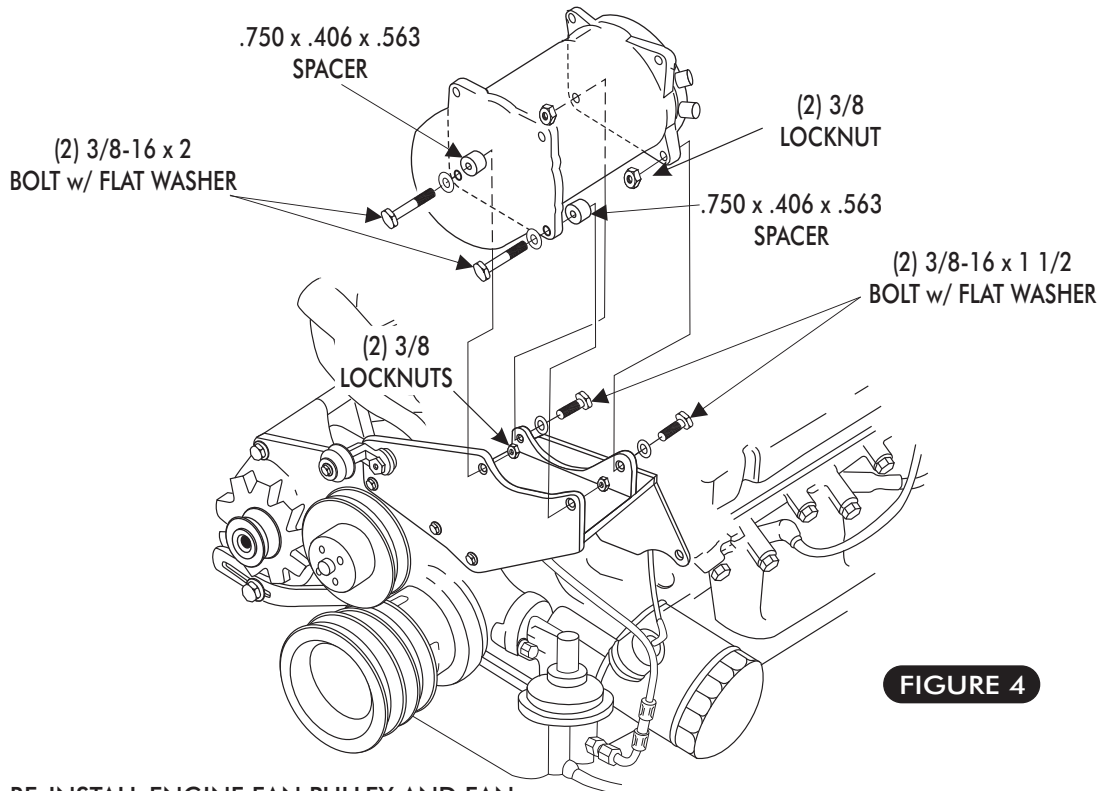


FIGURE 4

- 8. RE-INSTALL ENGINE FAN PULLEY AND FAN.
- 9. INSTALL BELTS AS SHOWN IN **FIGURE 5 BELOW**. ADJUST TO PROPER TENSION AND TIGHTEN ALL BOLTS. A/C BELT 1/2 x 56 DAYCO BELT

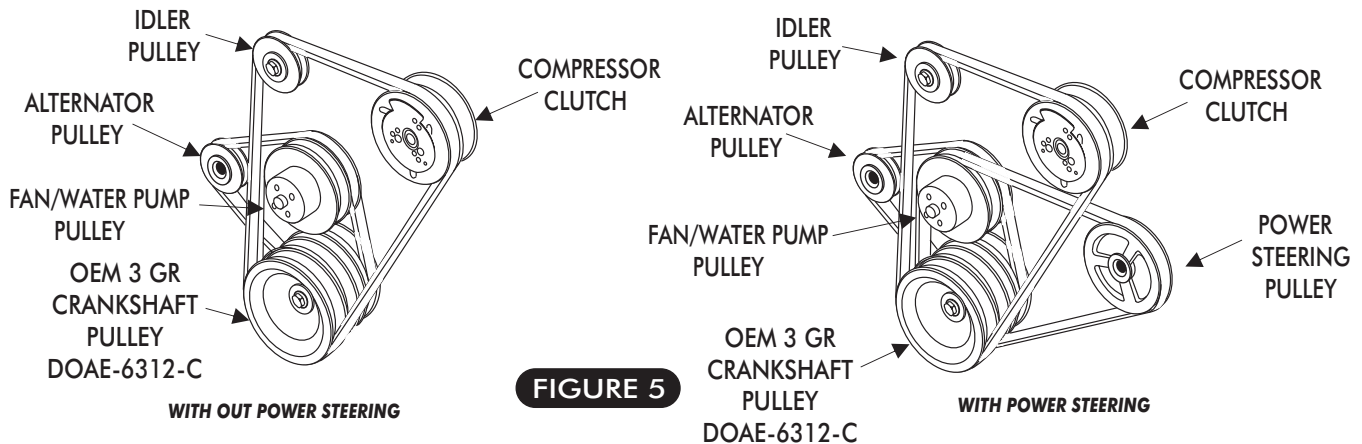


FIGURE 5

- 10. CHECK FOR PROPER CLEARANCE BETWEEN THE COMPRESSOR, COMPRESSOR CLUTCH, MOUNTING BRACKET AND ALL HEATER HOSES AND OIL LINES. FILL UP THE RADIATOR TO REPLACE ANY FLUIDS LOST DURING THE INSTALLATION PROCESS.



351C FORD COMPRESSOR BRACKET

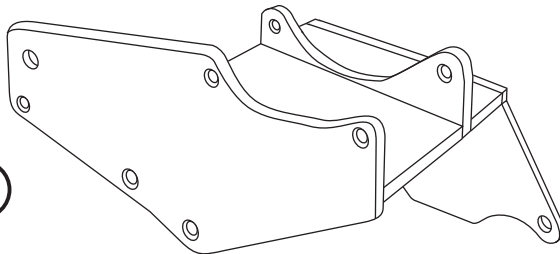
351C FORD COMPRESSOR BRACKET

BRACKET KIT
131351

No.	QTY.	PART No.	DESCRIPTION	CHECK LIST
1.	1	137003	351C FORD COMP. MOUNTING BRKT.	_____
2.	1	191004	HARDWARE KIT	_____

CHECKED BY: _____
PACKED BY: _____
DATE: _____

①



②

