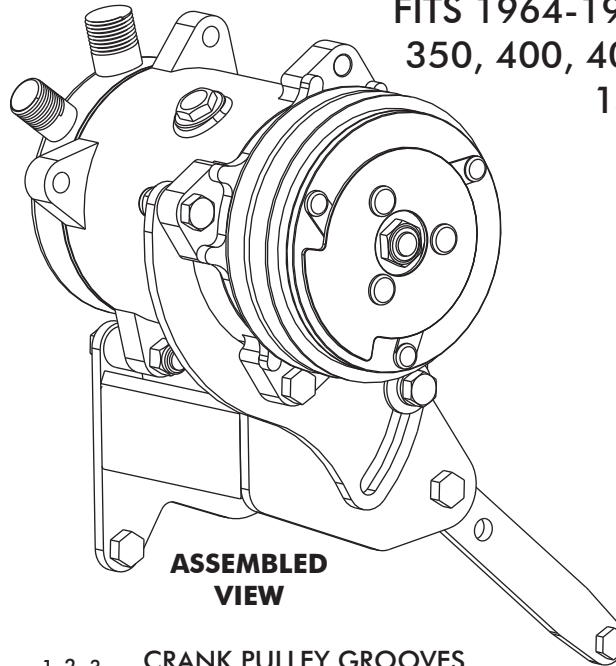
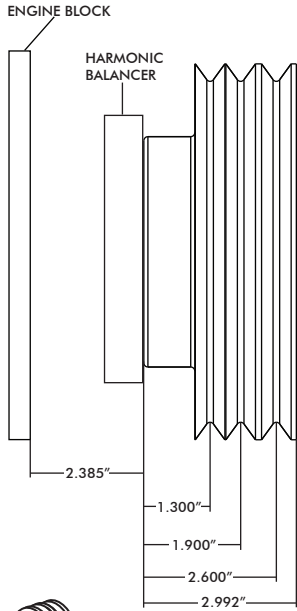
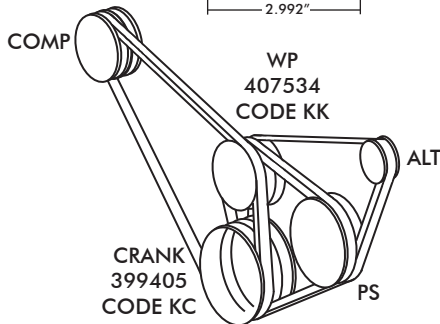


TM 350-455 OLDS PASSENGER SIDE  
 COMPRESSOR BRACKET  
 FITS 1964-1977 260, 307, 330  
 350, 400, 403, 425 AND 455  
 141008



**ASSEMBLED VIEW**



**BELT ROUTING**



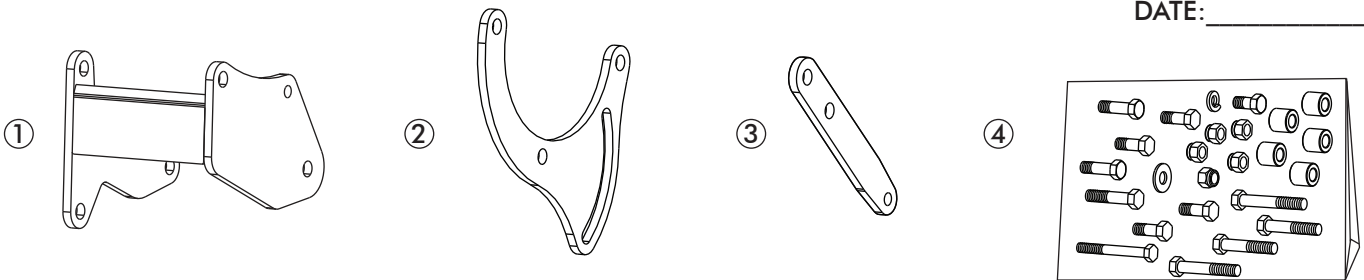
**CRANK PULLEY GROOVES**

1. CRANK, WATER PUMP & COMPRESSOR
2. CRANK, WATER PUMP & POWER STEERING
3. CRANK, WATER PUMP, ALTERNATOR & POWER STEERING

**REQUIRES 3-GROOVE CRANK AND WATER PUMP PULLEY.**

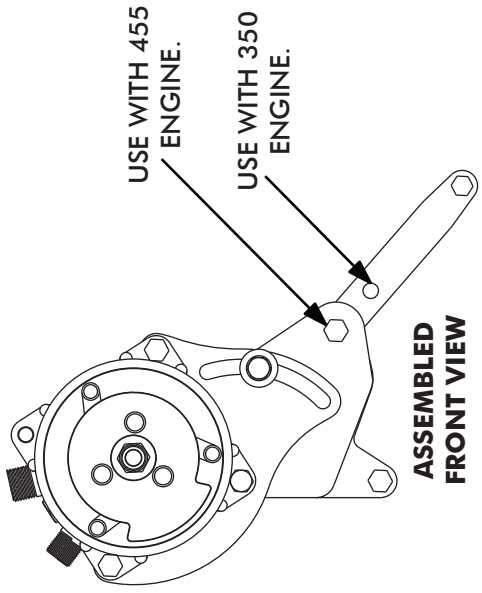
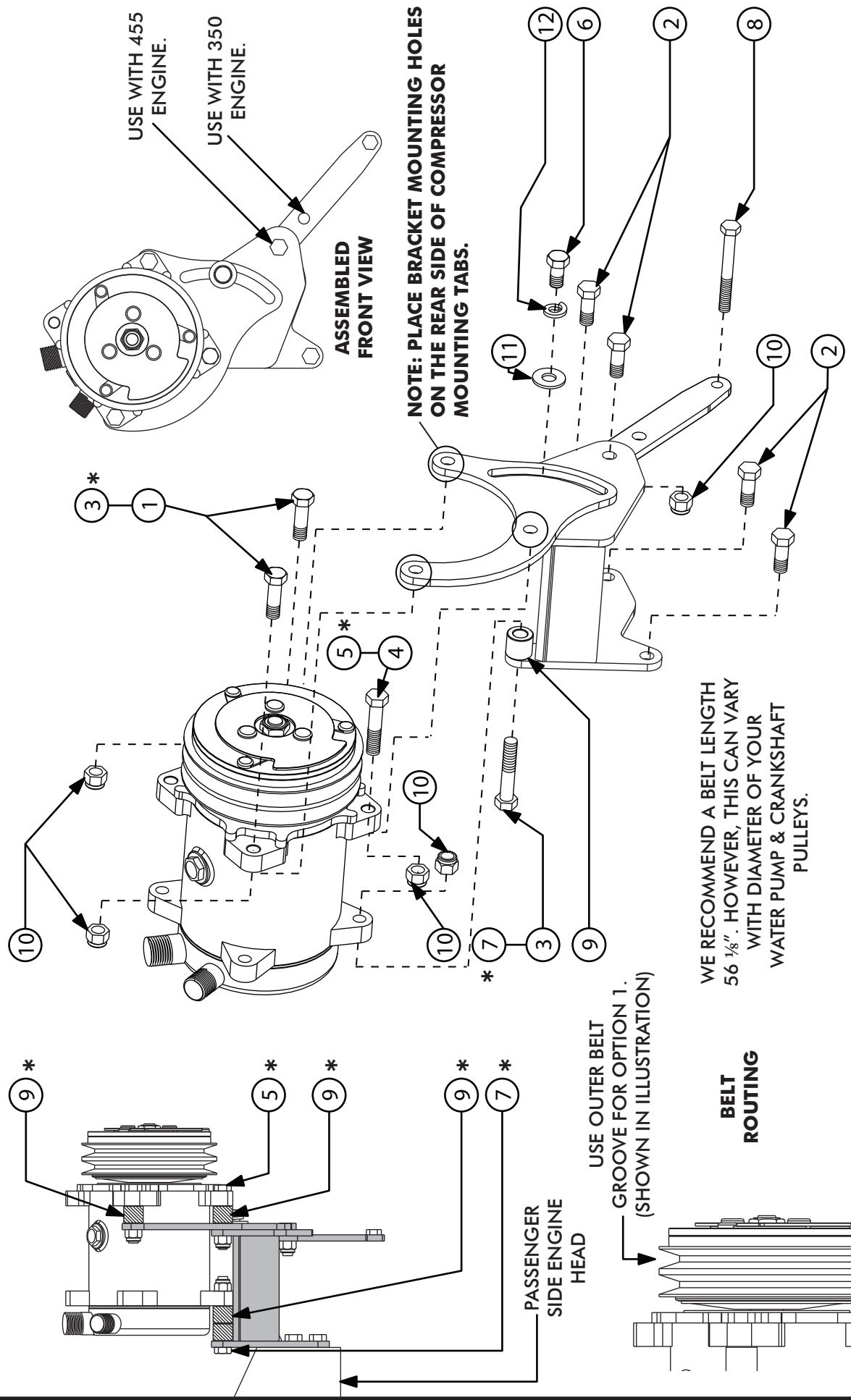
No.	QTY.	PART No.	DESCRIPTION
1.	1	141007	350-455 OLDS COMP BRACKET ASM
2.	1	146006-SCR	COMPRESSOR MOUNTING BRACKET
3.	1	141006	350-455 OLDS COMP BRACE
4.	1	191018	HARDWARE KIT

CHECKED BY: \_\_\_\_\_  
 PACKED BY: \_\_\_\_\_  
 DATE: \_\_\_\_\_



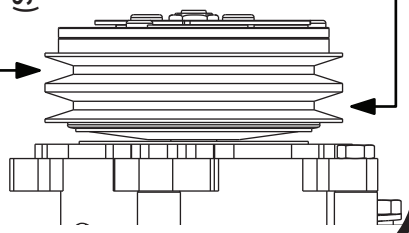


ASSEMBLE ALL BRACKETS LOOSELY TO ENGINE BEFORE TIGHTENING BOLTS. THIS WILL ENSURE PROPER ALIGNMENT OF ALL BRACKETS. REFER TO HARDWARE PACKING LIST FOR NUMBERED PART DESCRIPTIONS.



WE RECOMMEND A BELT LENGTH 56 1/8". HOWEVER, THIS CAN VARY WITH DIAMETER OF YOUR WATER PUMP & CRANKSHAFT PULLEYS.

USE OUTER BELT GROOVE FOR OPTION 1. (SHOWN IN ILLUSTRATION)



USE INNER BELT GROOVE FOR OPTION 2. (\* ADDED VALVE COVER CLEARANCE)

\* USE HARDWARE FOR ADDED VALVE COVER CLEARANCE.



141008 OLDS 350-455 COMP BRKT

FITS 1964-1977 260, 307, 330, 350, 400, 403, 425 AND 455

REQUIRES 3-GROOVE WATER PUMP AND BALANCER PULLEYS. WATER PUMP PULLEY  
OVERALL HEIGHT: 2.875" - 3.000"

**DISASSEMBLY:**

1. DISCONNECT BATTERY AND REMOVE OE A/C COMPRESSOR, BELTS AND BRACKETS IF EQUIPPED.

**ASSEMBLY:**

1. INSTALL VINTAGE AIR 141007 COMPRESSOR BRACKET TO PASSENGER SIDE CYLINDER HEAD USING TOP MIDDLE MOUNTING HOLE FIRST; THEN TWO REMAINING MOUNTING HOLE PROVISIONS. USE (3) 3/8-16 X 1.000 BOLTS. REFER TO ILLUSTRATION.

**USING OUTER BELT GROOVE ON COMPRESSOR: OPTION 1**

2. INSTALL 146006-SCR COMPRESSOR MOUNTING BRACKET TO THE COMPRESSOR USING (2) 3/8-16 X 1.250 BOLTS AND (2) 3/8-16 LOCKNUTS ON COMPRESSOR TABS "B" AND "D". INSTALL COMP/MOUNTING BRACKET ASSEMBLY ONTO 141007 COMPRESSOR BRACKET USING COMPRESSOR TAB "C" AND (1) 3/8-16 X 1.750 BOLT AND (1) 3/8-16 LOCKNUT. REFER TO ILLUSTRATION.
3. INSTALL (1) .750 O.D. X .680 L STEEL SPACER BETWEEN 141007 COMPRESSOR MOUNTING HOLE AND REAR OF COMPRESSOR. INSTALL (1) 3/8-16 X 2.000 BOLT AND (1) 3/8-16 LOCKNUT. REFER TO ILLUSTRATION. GO TO STEP 4.

**USING INNER BELT GROOVE ON COMPRESSOR: OPTION 2**

2. INSTALL 146006-SCR COMPRESSOR MOUNTING BRACKET TO COMPRESSOR USING (3) .750 O.D. X .680 L STEEL SPACERS BETWEEN COMPRESSOR TABS "B", "C", "D" AND MOUNTING BRACKET. INSTALL (2) 3/8-16 X 2.000 BOLTS AND (2) 3/8-16 LOCKNUTS AT COMPRESSOR TAB LOCATIONS "B" AND "D". INSTALL (1) 3/8-16 X 2.250 BOLT AND (1) 3/8-16 LOCKNUT AT LOCATION "C".
3. INSTALL (2) .750 O.D. X .680 L STEEL SPACERS BETWEEN 141007 COMPRESSOR MOUNTING HOLE AND REAR OF COMPRESSOR. INSTALL (1) 3/8-16 X 2.750 BOLT AND (1) 3/8-16 LOCKNUT. REFER TO ILLUSTRATION.
4. INSTALL (1) 3/8-16 X .750 BOLT, FLAT WASHER AND LOCK-WASHER TO 146006-SCR TENSIONING SLOT. REFER TO ILLUSTRATION.
5. INSTALL 141006 COMPRESSOR BRACE ONTO BRACKET ASSEMBLY USING (1) 3/8-16 X 1.000 BOLT AND (1) 3/8-16 LOCKNUT. NOTE DUAL MOUNTING HOLES INCORPORATED INTO BRACKET. 400, 425 AND 455 ENGINES USE "LONGER/OUTER" HOLE, ALL OTHER APPLICATIONS USE "SHORTER/INNER" HOLE. INSTALL OTHER SIDE OF BRACKET TO WATER PUMP USING (1) 5/16-18 X 2.750 BOLT.
6. INSTALL DRIVE BELT. VINTAGE AIR RECOMMENDS A 13/32 X 56 1/8" BELT (I.E. GATES 7555).