



an ISO 9001:2008 Registered Company

INSTALLATION INSTRUCTIONS
1955-64 STUDEBAKER 259-289 V8
w/o POWER STEERING
COMPRESSOR BRACKET
(151590-SSA)

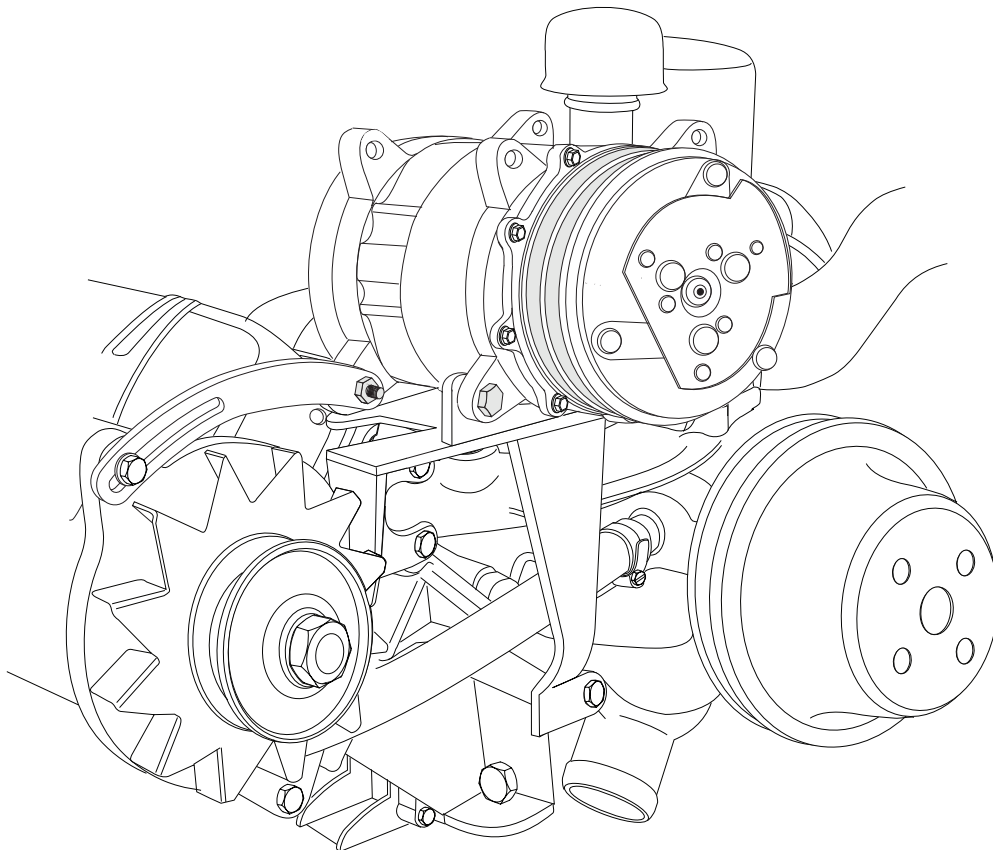




Table of Contents

PAGES

1. COVER
2. TABLE OF CONTENTS
3. PACKING LIST
4. COMPRESSOR MOUNTING BRACKET INSTALLATION
5. COMPRESSOR INSTALLATION
6. IDLER PULLEY BRACKET INSTALATION
7. PACKING LIST

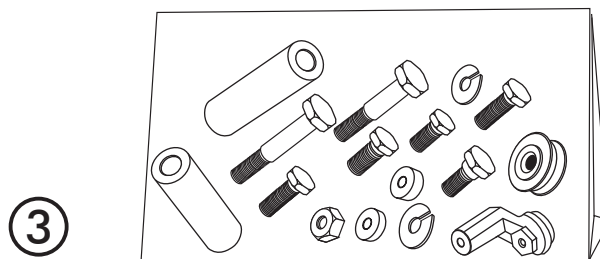
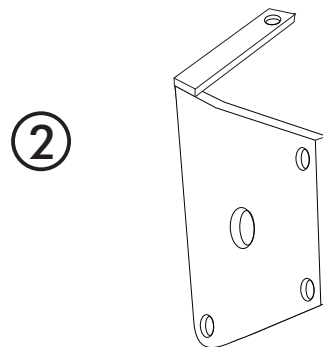
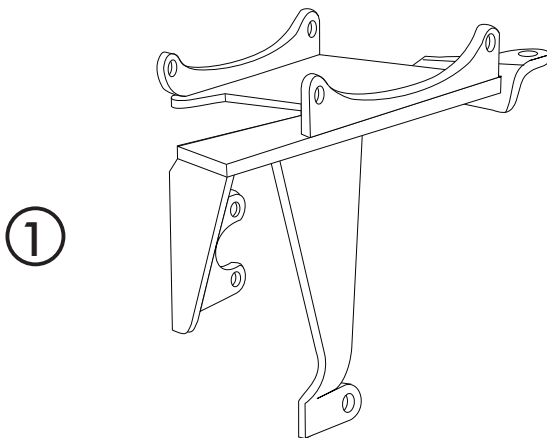


**STUDEBAKER 259-289 V8 w/o POWER STEERING
COMPRESSOR BRACKET (PASSENGER SIDE)**

(151590-SSA) PACKING LIST

No.	QTY.	PART No.	DESCRIPTION
1.	1	151000-SSR	COMPRESSOR MOUNTING BRKT
2.	1	156000-SSR	IDLER PULLEY MOUNTING BRKT
3.	1	191000-HSA	HARDWARE KIT

**** BEFORE BEGINNING INSTALLATION, OPEN ALL PACKAGES AND CHECK CONTENTS OF SHIPMENT. PLEASE REPORT ANY SHORTAGES DIRECTLY TO VINTAGE AIR WITHIN 15 DAYS. AFTER 15 DAYS, VINTAGE AIR WILL NOT BE RESPONSIBLE FOR MISSING OR DAMAGED ITEMS.**



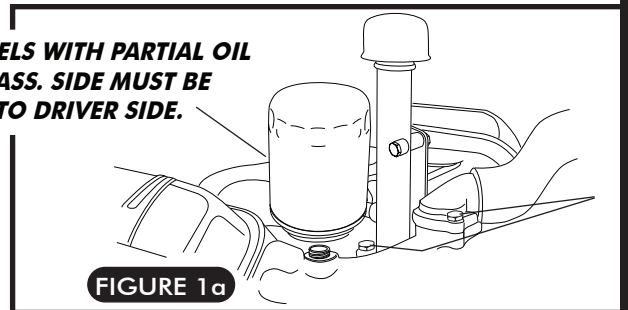
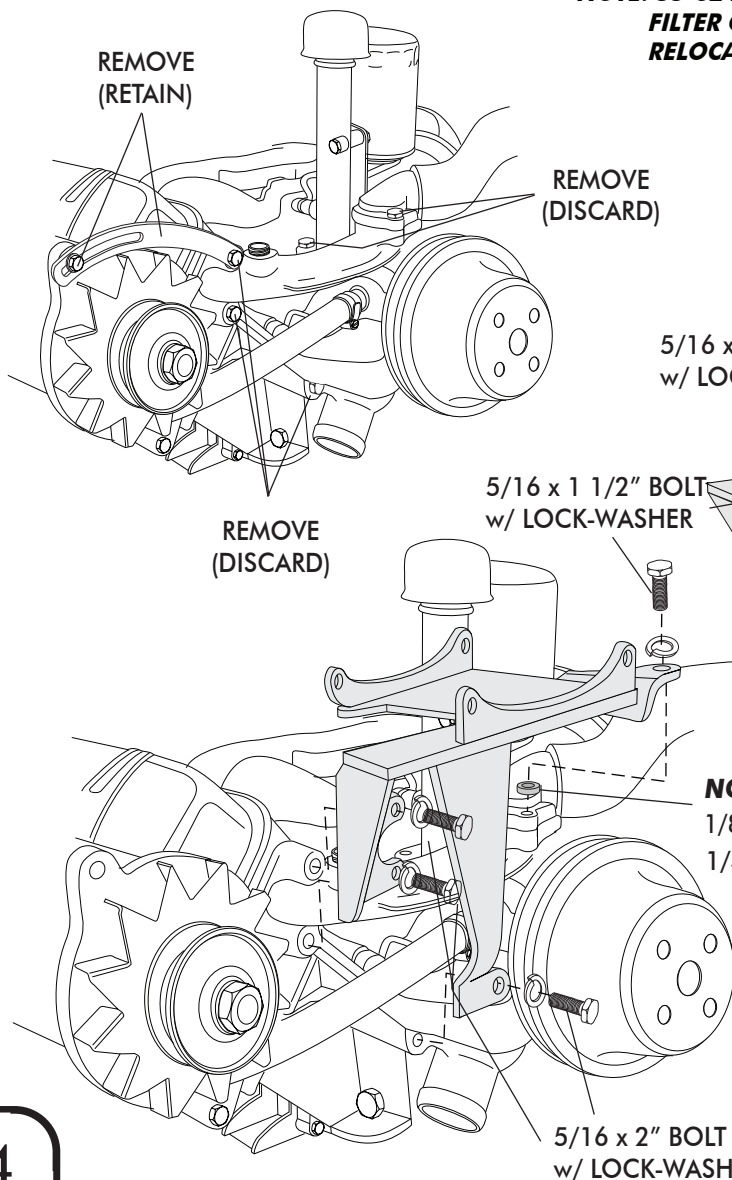
INSTALLATION INSTRUCTIONS

COMPRESSOR MOUNTING BRACKET INSTALLATION

NOTE: ASSEMBLE ALL BRACKETS LOOSELY TO ENGINE, BEFORE TIGHTENING BOLTS, AS THIS WILL INSURE PROPER ALIGNMENT OF ALL BRACKETS.

NOTE: 55-62 MODELS WITH PARTIAL OIL FILTER ON PASS. SIDE MUST BE RELOCATED TO DRIVER SIDE. SEE FIG. 1a BELOW

- REMOVE THE (3) PASSENGER SIDE WATER PUMP MOUNTING BOLTS, TWO UPPER AND ONE LOWER (DISCARD).
- REMOVE GENERATOR ADJUSTMENT BRACKET (RETAIN BRACKET AND HARDWARE). SEE FIGURE 1 BELOW.
- REMOVE THE (FRONT) THERMOSTAT HOUSING BOLT AND THE INTAKE BOLT (DISCARD). SEE FIGURE 1 BELOW.
- INSTALL COMPRESSOR MOUNTING BRACKET TO THE PASSENGER SIDE OF WATER PUMP USING (3) 5/16 x 2" BOLTS WITH LOCK-WASHERS. SEE FIGURE 1 BELOW.
- SECURE DRIVER SIDE OF BRACKET USING A 1/8" SPACER (62 1/2-64 MODEL)/1/4" SPACER (55-62 MODEL) BETWEEN THE THERMOSTAT HOUSING AND THE UPPER MOUNTING TAB OF COMPRESSOR BRACKET WITH A 5/16 x 1 1/2" BOLT AND LOCK-WASHER. SEE FIGURE 1 BELOW.
- PLACE A 3/8" SPACER (55-62 MODEL)/5/8" SPACER (63-64 MODEL) BETWEEN THE INTAKE AND THE LOWER MOUNTING TAB OF COMPRESSOR MOUNTING BRACKET, AND SECURE WITH A 5/16 x 1 3/4" BOLT AND LOCK-WASHER. SEE FIGURE 1 BELOW.



NOTE: 55-62 MODELS WITH PARTIAL OIL FILTER ON PASS. SIDE MUST BE RELOCATED TO DRIVER SIDE.

5/16 x 1 3/4" BOLT w/ LOCK-WASHER

5/16 x 1 1/2" BOLT w/ LOCK-WASHER

NOTE:
1/8" SPACER (62 1/2-64 MODEL)
1/4" SPACER (55-62 MODEL)

NOTE:
3/8" SPACER (55-62 MODEL)
5/8" SPACER (63-64 MODEL)

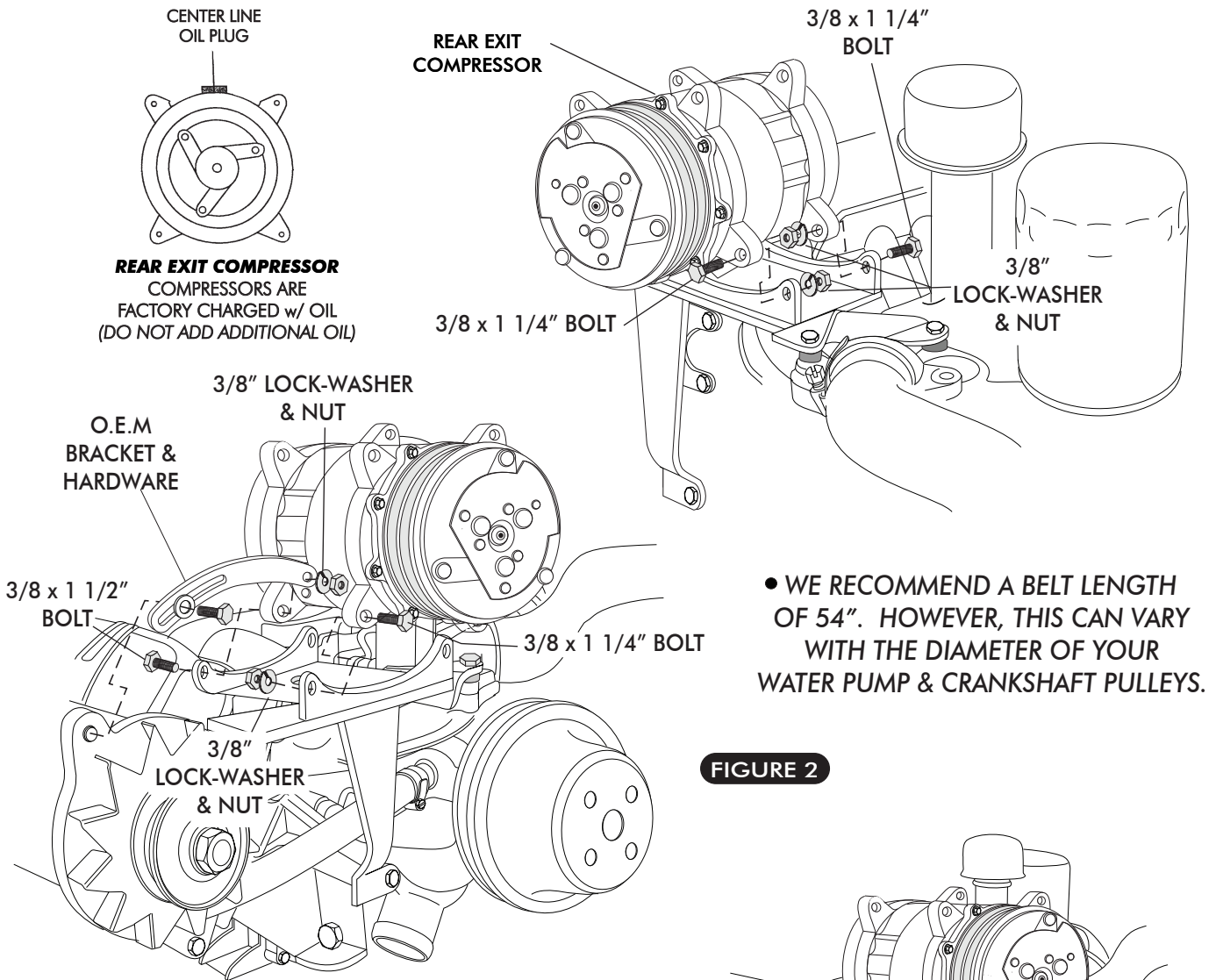
FIGURE 1



COMPRESSOR INSTALLATION

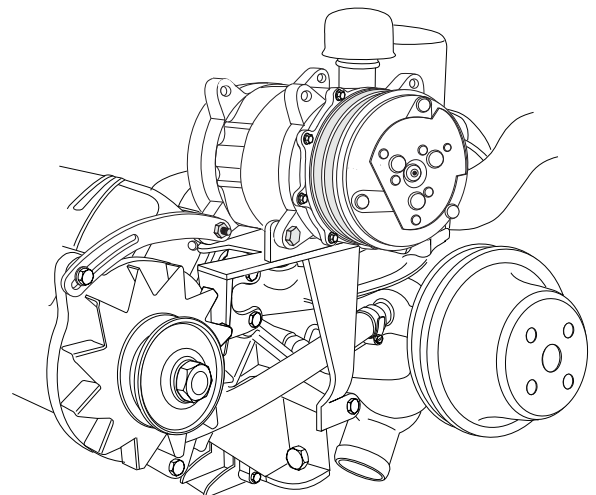
NOTE: MUST USE REAR EXIT COMPRESSOR

- USE (3) 3/8" x 1 1/4" BOLT, LOCK-WASHER AND NUT TO ATTACH COMPRESSOR TO MOUNTING BRACKET. (NOTE: COMPRESSOR MOUNTING TABS WILL MOUNT ON FRONT SIDE OF MOUNTING BRACKET.) SEE FIG. 2 BELOW.
- USE (1) 3/8" x 1 1/2" BOLT, LOCK-WASHER AND NUT TO ATTACH THE O.E.M GENERATOR ADJUSTMENT BRACKET TO THE COMPRESSOR BRACKET. FIGURE 2 BELOW.



• WE RECOMMEND A BELT LENGTH OF 54". HOWEVER, THIS CAN VARY WITH THE DIAMETER OF YOUR WATER PUMP & CRANKSHAFT PULLEYS.

FIGURE 2



IMPORTANT NOTICE

NOTE: FAILURE TO FOLLOW THESE PROCEDURES VOIDS ALL WARRANTIES.

1. DO NOT CONNECT COMPRESSOR CLUTCH WIRE UNTIL SYSTEM IS BEING CHARGED WITH REFRIGERANT. RUNNING COMPRESSOR WITHOUT REFRIGERANT CHARGE WILL RESULT IN COMPRESSOR FAILURE.
2. VINTAGE AIR RECOMMENDS ONLY DAYCO, GATES, OR GOODYEAR BRAND REINFORCED SERIES 17 V BELT BE USED WITH THIS COMPRESSOR. ANY USE OF LESSER QUALITY BELTS MAY CAUSE COMPRESSOR TO PERFORM IMPROPERLY.

IDLER PULLEY & BRACKET INSTALLATION

- INSTALL THE 1 1/2" IDLER ECCENTRIC TO THE IDLER PULLEY BRACKET USING THE 1/2" x 1 1/4" S.A.E BOLT AND LOCK-WASHER. SEE FIGURE 3 BELOW.
- INSTALL 3 5/8" IDLER PULLEY USING THE STANDARD SHOULDER BOLT. SEE FIGURE 3 BELOW.
- REMOVE THE (3) DRIVER SIDE WATER PUMP MOUNTING BOLTS, AND THE THERMOSTAT HOUSING BOLT. SEE FIGURE 3, BELOW.
- INSTALL THE IDLER PULLEY MOUNTING BRACKET USING (2) 5/16 x 4" BOLTS AND LOCK-WASHER, PLACE THE 1.960" SPACERS BETWEEN THE BRACKET AND WATER PUMP. USE THE 5/16 x 3 3/4" BOLT AND LOCK-WASHER, PLACE THE 2.535" SPACER BETWEEN THE WATER PUMP AND MOUNTING BRACKET. SEE FIGURE 4 BELOW.
- SECURE THE TOP PORTION OF THE BRACKET TO THE THERMOSTAT HOUSING USING A 5/16 x 1 1/2" BOLT AND LOCK-WASHER. SEE FIGURE 4 BELOW.

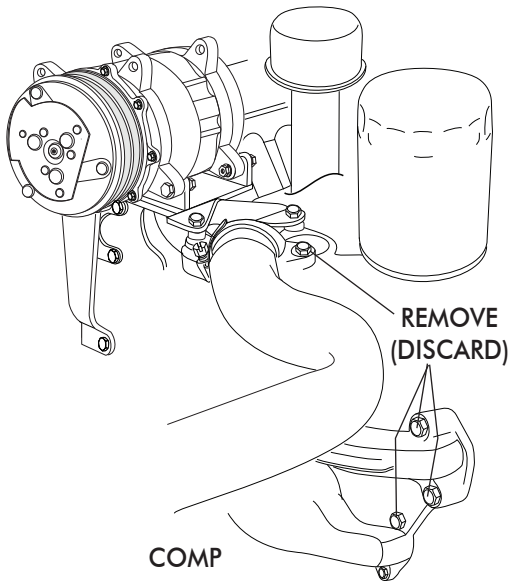
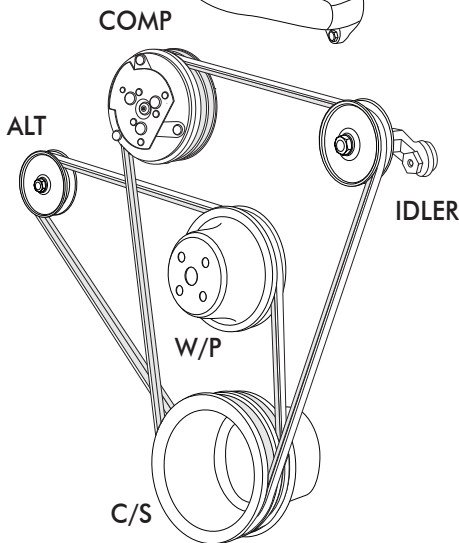
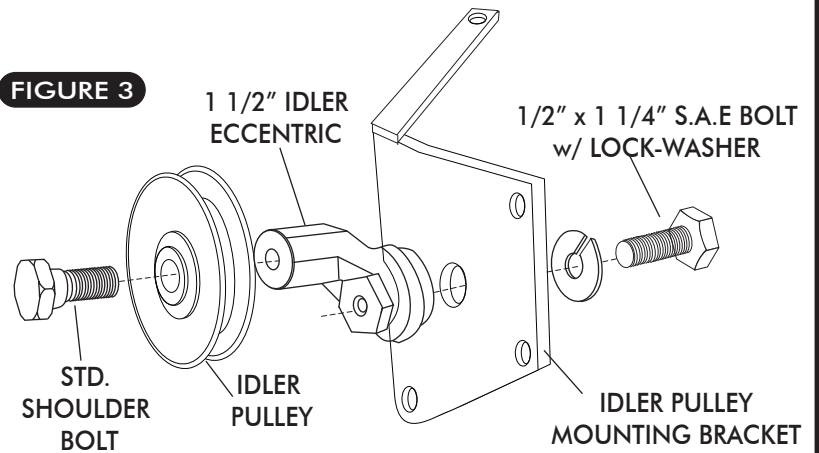


FIGURE 3



5/16 " x 4" BOLT
w/ LOCK-WASHER

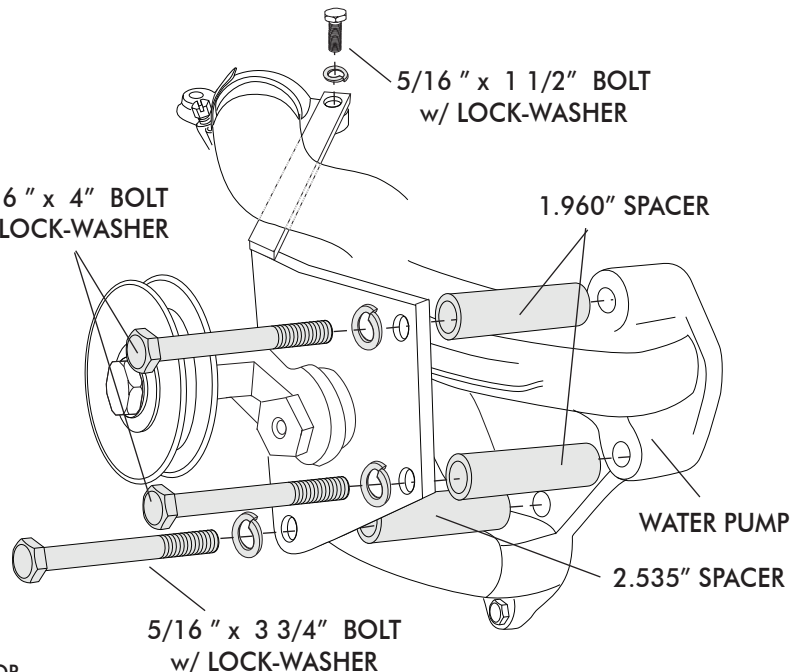
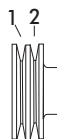


FIGURE 4



CRANK PULLEY GROOVES
1. CRANK, IDLER & COMPRESSOR
2. CRANK, FAN, & ALTERNATOR



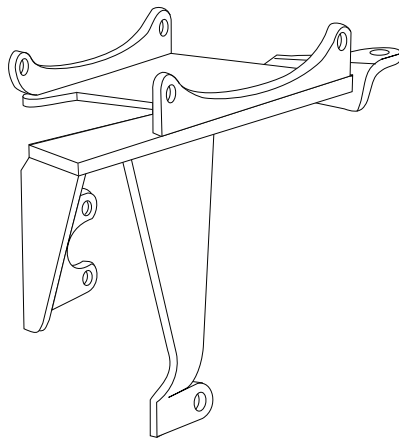
**STUDEBAKER 259-289 V8 w/o POWER STEERING
COMPRESSOR BRACKET (PASSENGER SIDE)**

(151590-SSA) PACKING LIST

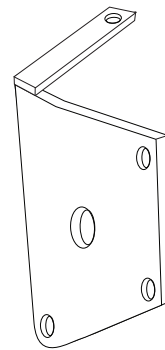
No.	QTY.	PART No.	DESCRIPTION	CHECK LIST
1.	1	151000-SSR	COMPRESSOR MOUNTING BRKT	_____
2.	1	156000-SSR	IDLER PULLEY MOUNTING BRKT	_____
3.	1	191000-HSA	HARDWARE KIT	_____

CHECKED BY: _____
PACKED BY: _____
DATE: _____

①



②



③

