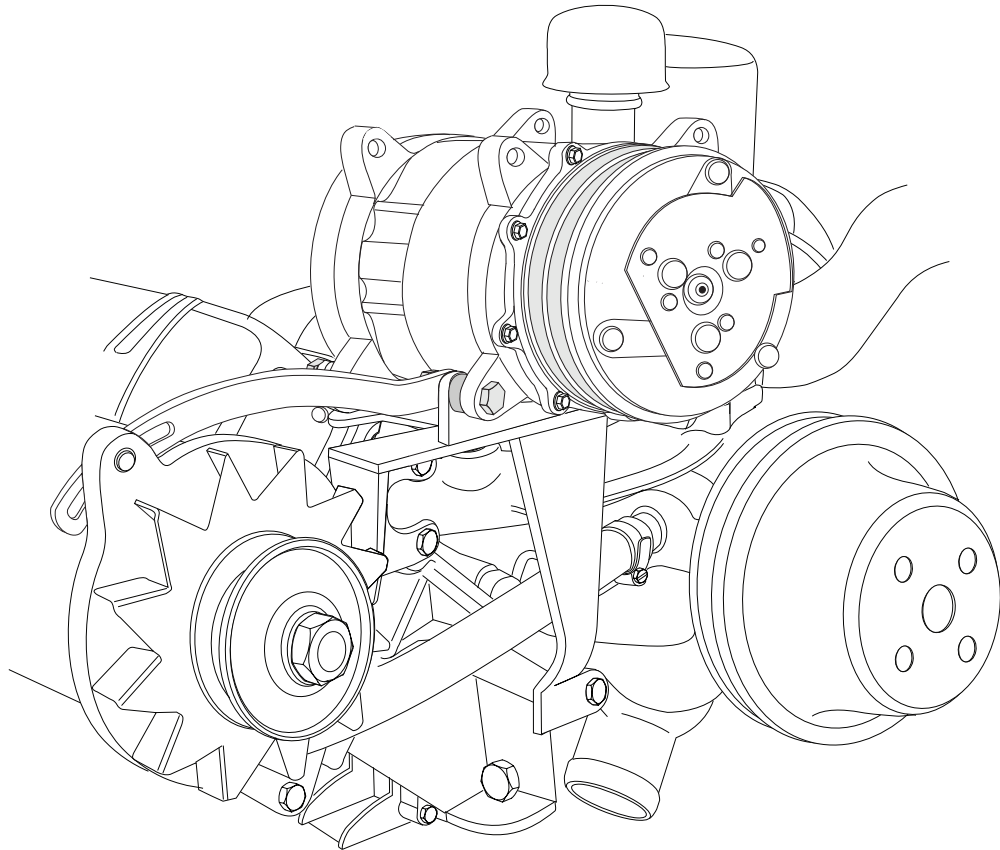




an ISO 9001:2008 Registered Company

INSTALLATION INSTRUCTIONS
1955-64 STUDEBAKER 259-289 V8
w/POWER STEERING
COMPRESSOR BRACKET
w/ CRANKSHAFT PULLEY
(151593-SSA)



18865 GOLL ST. - SAN ANTONIO TX. - 78266 ph.210-654-7171 - fax 210-654-3113



Table of Contents

PAGES

1. COVER
2. TABLE OF CONTENTS
3. PACKING LIST
4. COMPRESSOR MOUNTING BRACKET INSTALLATION
5. COMPRESSOR INSTALLATION
6. IDLER PULLEY BRACKET INSTALLATION
7. CRANKSHAFT PULLEY INSTALLATION
8. PACKING LIST

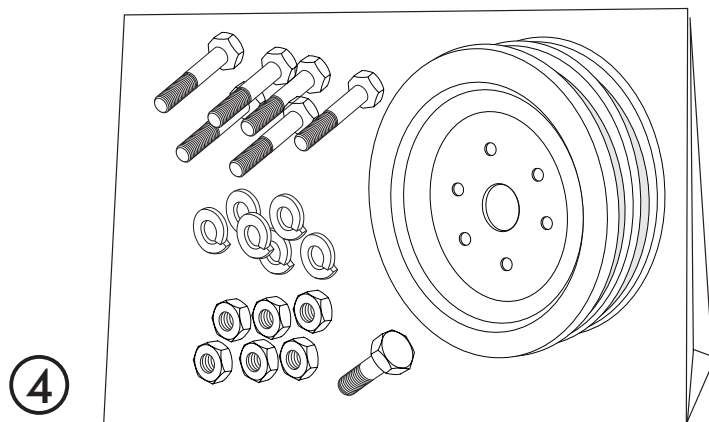
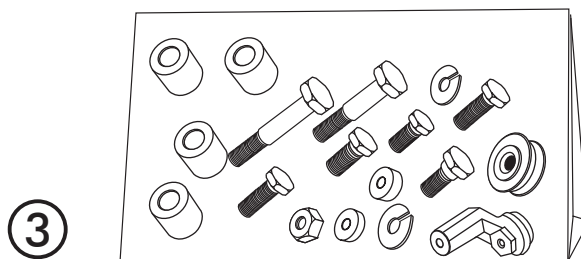
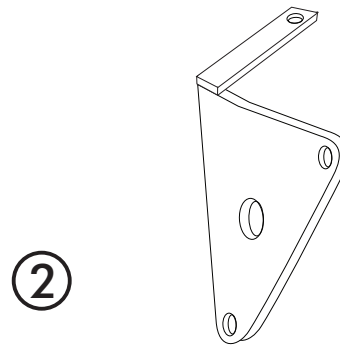
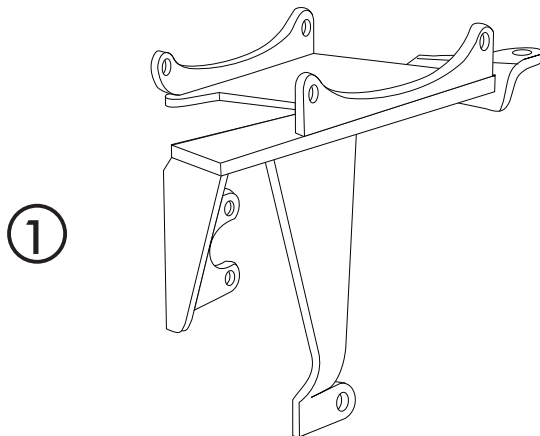


**STUDEBAKER 259-289 V8 w/POWER STEERING
COMPRESSOR BRACKET (PASSENGER SIDE)
w/ CRANKSHAFT PULLEY**

(151593-SSA) PACKING LIST

No.	QTY.	PART No.	DESCRIPTION
1.	1	151000-SSR	COMPRESSOR MOUNTING BRKT
2.	1	156001-SSR	IDLER PULLEY MOUNTING BRKT w/ PS
3.	1	191002-HSA	HARDWARE KIT
4.	1	735055-CSA	259-289 CRANKSHAFT PULLEY KIT

**** BEFORE BEGINNING INSTALLATION OPEN ALL PACKAGES AND CHECK CONTENTS OF SHIPMENT. PLEASE REPORT ANY SHORTAGES DIRECTLY TO VINTAGE AIR WITHIN 15 DAYS. AFTER 15 DAYS, VINTAGE AIR WILL NOT BE RESPONSIBLE FOR MISSING OR DAMAGED ITEMS.**





INSTALLATION INSTRUCTIONS

COMPRESSOR MOUNTING BRACKET INSTALLATION

NOTE: ASSEMBLE ALL BRACKETS LOOSELY TO ENGINE, BEFORE TIGHTENING BOLTS, THIS WILL INSURE PROPER ALIGNMENT OF ALL BRACKETS.

NOTE: 55-62 MODELS WITH PARTIAL OIL FILTER ON PASS. SIDE MUST BE RELOCATED TO DRIVER SIDE. SEE FIG. 1a BELOW

- REMOVE THE (3) PASSENGER SIDE WATER PUMP MOUNTING BOLTS, TWO UPPER AND ONE LOWER (DISCARD).
- REMOVE GENERATOR ADJUSTMENT BRACKET (RETAIN BRACKET AND HARDWARE). SEE FIGURE 1 BELOW.
- REMOVE THE (FRONT) THERMOSTAT HOUSING BOLT AND THE INTAKE BOLT (DISCARD). SEE FIGURE 1 BELOW.
- INSTALL COMPRESSOR MOUNTING BRACKET TO THE PASSENGER SIDE OF WATER PUMP USING (3) 5/16 x 2" BOLTS WITH LOCK-WASHERS. SEE FIGURE 1 BELOW.
- SECURE DRIVER SIDE OF BRACKET USING A 1/8" SPACER (62 1/2-64 MODEL)/1/4" SPACER (55-62 MODEL) BETWEEN THE THERMOSTAT HOUSING AND THE UPPER MOUNTING TAB OF COMPRESSOR BRACKET WITH A 5/16 x 1 1/2" BOLT AND LOCK-WASHER. SEE FIGURE 1 BELOW.
- PLACE A 3/8" SPACER (55-62 MODEL)/5/8" SPACER (63-64 MODEL) BETWEEN THE INTAKE AND THE LOWER MOUNTING TAB OF COMPRESSOR MOUNTING BRACKET, AND SECURE WITH A 5/16 x 1 3/4" BOLT AND LOCK-WASHER. SEE FIGURE 1 BELOW.

NOTE: 55-62 MODELS WITH PARTIAL OIL FILTER ON PASS. SIDE MUST BE RELOCATED TO DRIVER SIDE.

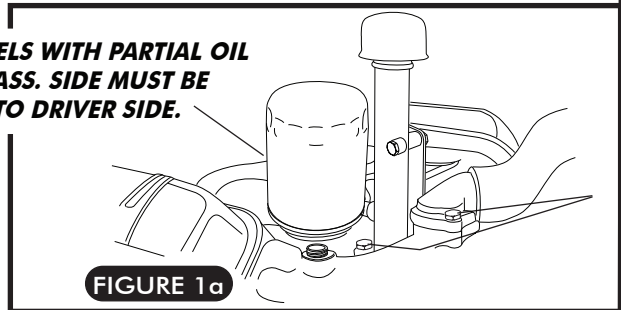
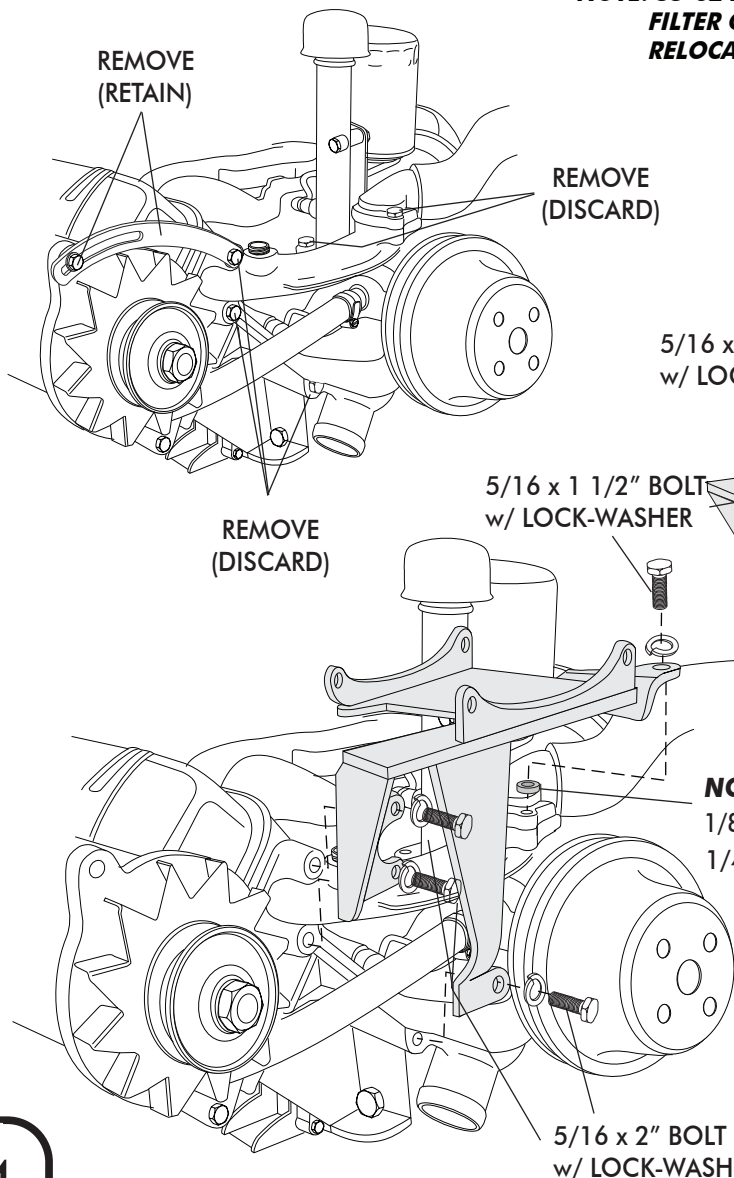


FIGURE 1a



5/16 x 1 3/4" BOLT w/ LOCK-WASHER

NOTE: 1/8" SPACER (62 1/2-64 MODEL) 1/4" SPACER (55-62 MODEL)

NOTE: 3/8" SPACER (55-62 MODEL) 5/8" SPACER (63-64 MODEL)

FIGURE 1

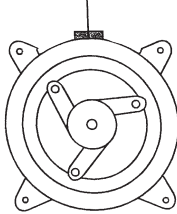


COMPRESSOR INSTALLATION

NOTE: MUST USE REAR EXIT COMPRESSOR

- USE (3) 3/8" x 1 1/2" BOLT, LOCK-WASHER AND NUT TO ATTACH COMPRESSOR TO MOUNTING BRACKET. (NOTE: INSTALL (4) 1/4" SPACERS BETWEEN COMPRESSOR MOUNTING TABS AND THE FRONT SIDE OF COMPRESSOR MOUNTING BRACKET.) SEE FIG. 2 BELOW.
- USE (1) 3/8" x 1 1/2" BOLT, LOCK-WASHER AND NUT TO ATTACH THE O.E.M GENERATOR ADJUSTMENT BRACKET TO THE COMPRESSOR BRACKET. FIGURE 2 BELOW.

CENTER LINE
OIL PLUG



REAR EXIT COMPRESSOR
COMPRESSORS ARE
FACTORY CHARGED w/ OIL
(DO NOT ADD ADDITIONAL OIL)

REAR EXIT
COMPRESSOR

3/8 x 1 1/2"
BOLT

3/8 x 1 1/2" BOLT

1/4"
SPACER

3/8"
LOCK-WASHER
& NUT

3/8" LOCK-WASHER
& NUT

O.E.M
BRACKET &
HARDWARE

1/4"
SPACER

3/8 x 1 1/2"
BOLT

3/8 x 1 3/4" BOLT

3/8"
LOCK-WASHER
& NUT

1/4"
SPACER

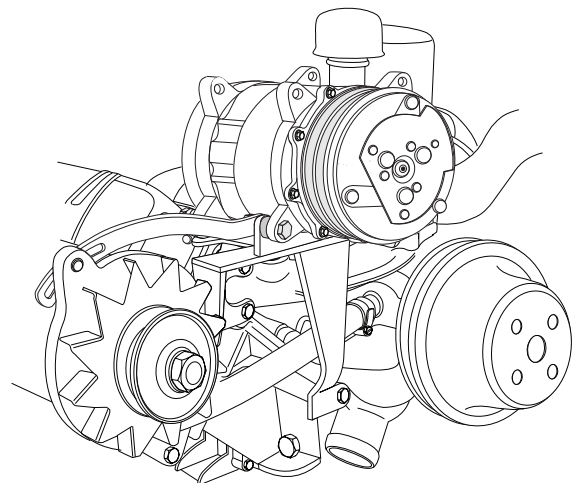
• WE RECOMMEND A BELT LENGTH OF 54". HOWEVER, THIS CAN VARY WITH THE DIAMETER OF YOUR WATER PUMP & CRANKSHAFT PULLEYS.

FIGURE 2

IMPORTANT NOTICE

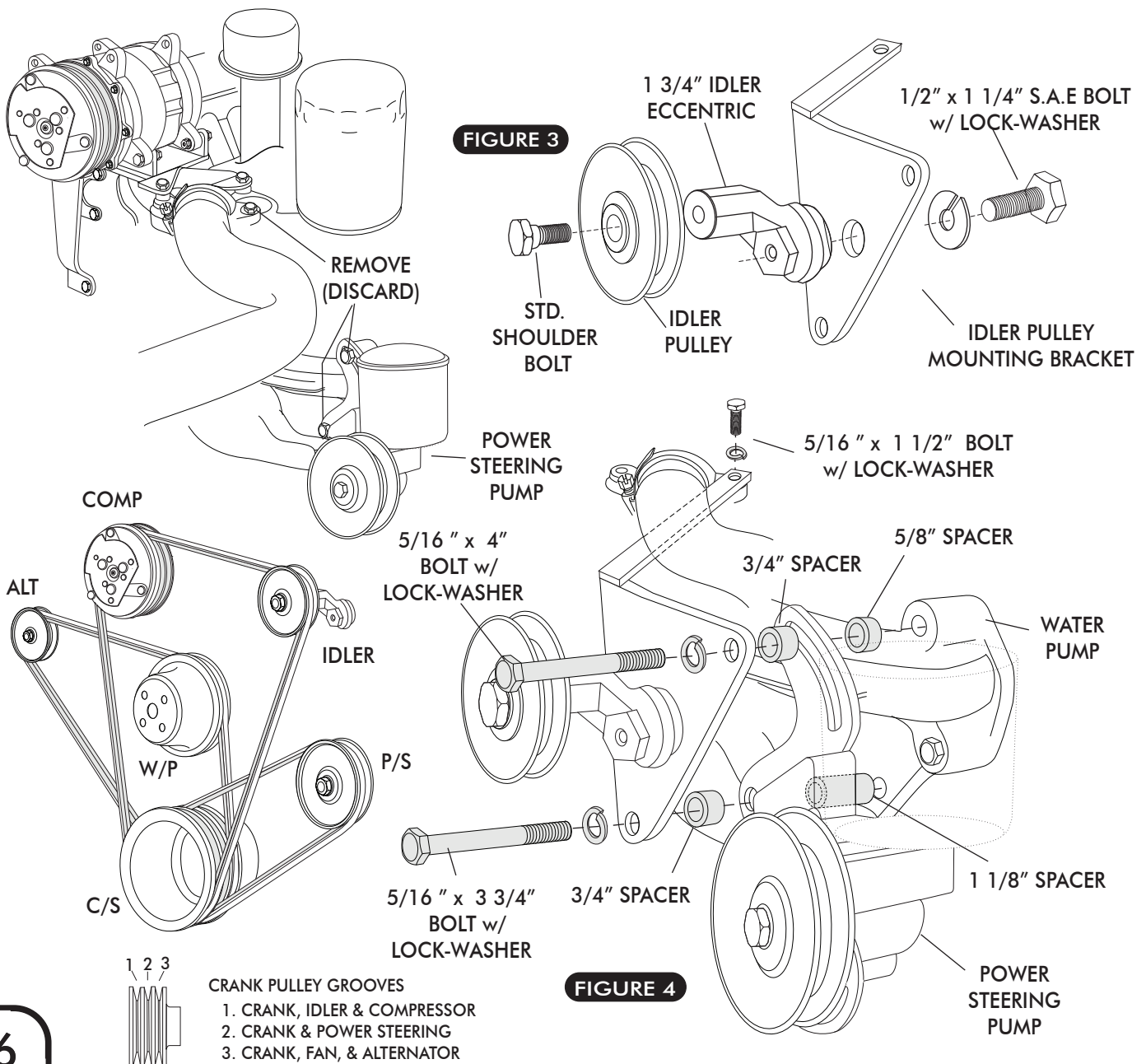
NOTE: FAILURE TO FOLLOW THESE PROCEDURES VOIDS ALL WARRANTIES.

1. DO NOT CONNECT COMPRESSOR CLUTCH WIRE UNTIL SYSTEM IS BEING CHARGED WITH REFRIGERANT. RUNNING COMPRESSOR WITHOUT REFRIGERANT CHARGE WILL RESULT IN COMPRESSOR FAILURE.
2. VINTAGE AIR RECOMMENDS ONLY DAYCO, GATES, OR GOODYEAR BRAND REINFORCED SERIES 17 V BELT BE USED WITH THIS COMPRESSOR. ANY USE OF LESSER QUALITY BELTS MAY CAUSE COMPRESSOR TO PERFORM IMPROPERLY.



IDLER PULLEY & BRACKET INSTALLATION

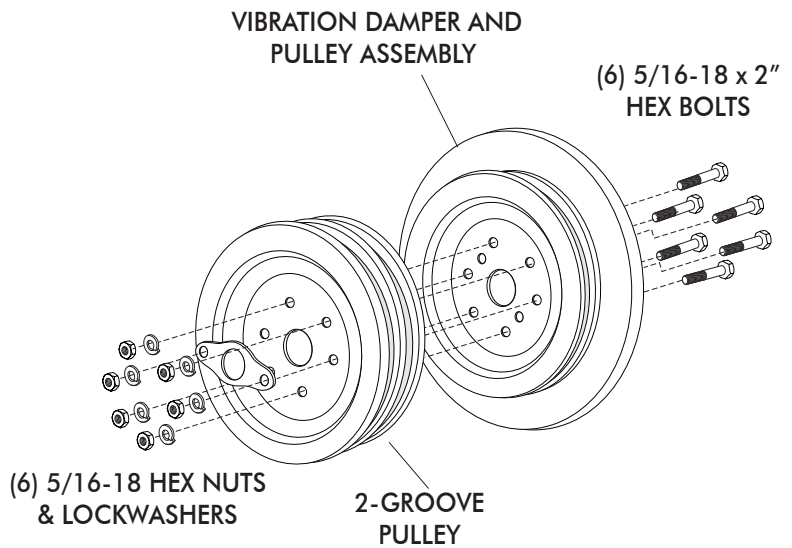
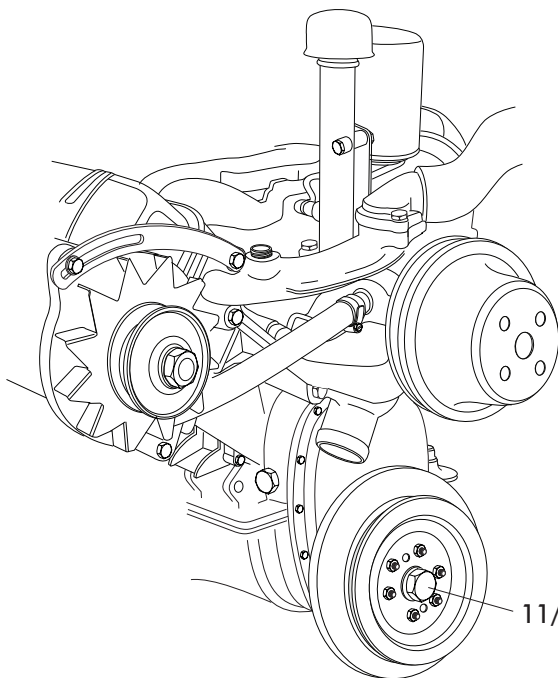
- INSTALL THE 1 3/4" IDLER ECCENTRIC TO THE IDLER PULLEY BRACKET USING THE 1/2" x 1 1/4" S.A.E BOLT AND LOCK-WASHER. SEE FIGURE 3 BELOW.
- INSTALL 3 5/8" IDLER PULLEY USING THE STANDARD SHOULDER BOLT. SEE FIGURE 3 BELOW.
- REMOVE THE (2) DRIVER SIDE WATER PUMP MOUNTING BOLTS, AND THE THERMOSTAT HOUSING BOLT. SEE FIGURE 3, BELOW.
- INSTALL THE IDLER PULLEY MOUNTING BRACKET USING A 5/16 x 4" BOLT, LOCK-WASHER, AND SPACERS THRU THE UPPER MOUNTING HOLE. SEE FIGURE 4 BELOW. INSTALL THE 5/16 x 3 3/4" BOLT, LOCK-WASHER, AND SPACERS THRU THE LOWER MOUNTING HOLE. SEE FIGURE 4 BELOW.
- SECURE THE TOP PORTION OF THE BRACKET TO THE THERMOSTAT HOUSING USING A 5/16 x 1 1/2" BOLT AND LOCK-WASHER. SEE FIGURE 4 BELOW.



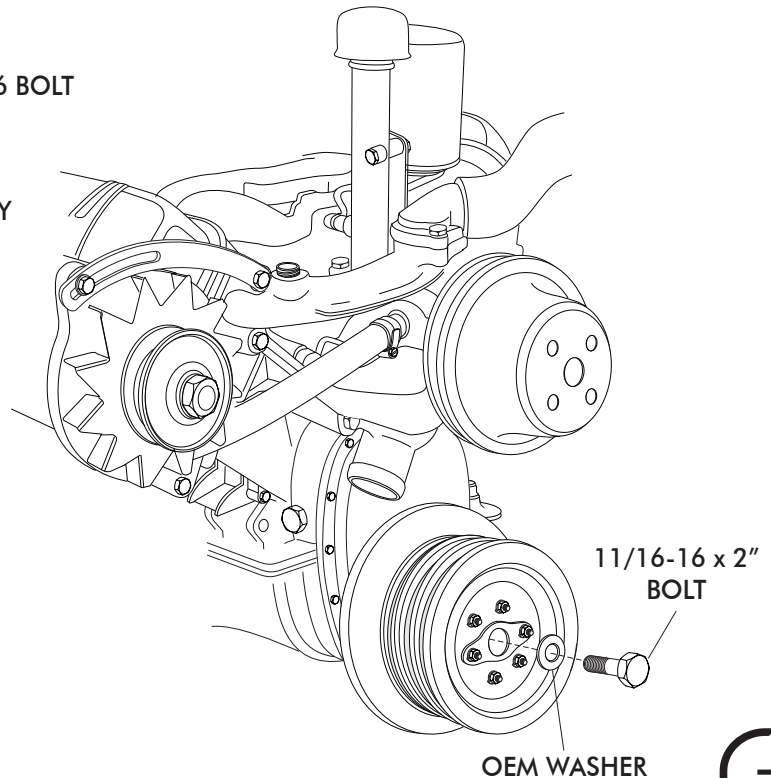


CRANK PULLEY REMOVAL AND INSTALLATION

- REMOVE THE 11/16 CRANKSHAFT BOLT FROM VIBRATION DAMPER AND PULLEY ASSEMBLY AND DISCARD. (NOTE: RETAIN OEM WASHER.)
- USING A UNIVERSAL PULLER, REMOVE THE VIBRATION DAMPER AND PULLEY ASSEMBLY.
- REMOVE THE (6) OEM BOLTS, WASHERS AND NUTS WHICH SECURE THE PULLEY TO THE VIBRATION DAMPER ASSEMBLY. (DISCARD OEM HARDWARE)
- ALIGN THE BOLT PATTERNS AND INSTALL THE 2-GROOVE PULLEY IN FRONT OF THE OEM CRANK PULLEY.
- USE (6) 5/16-18 x 2" BOLTS WITH NUTS AND WASHERS TO SECURE THE PULLEYS TO THE VIBRATION DAMPER ASSEMBLY. (TORQUE TO 13-17 ft lbs)



- INSTALL THE VIBRATION DAMPER AND PULLEY ASSEMBLY TO THE CRANKSHAFT USING THE 11/16-16 x 2" BOLT AND OEM WASHER. (TORQUE TO 130-140 ft lbs)





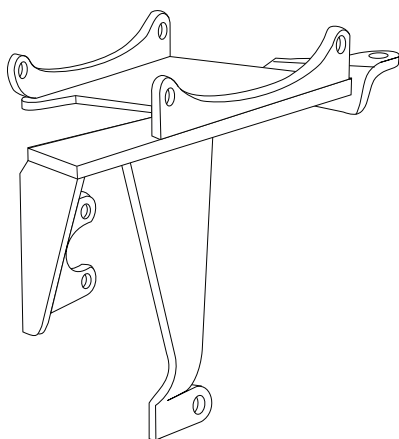
STUDEBAKER 259-289 V8 w/POWER STEERING
COMPRESSOR BRACKET (PASSENGER SIDE)
w/ CRANKSHAFT PULLEY

(151593-SSA) PACKING LIST

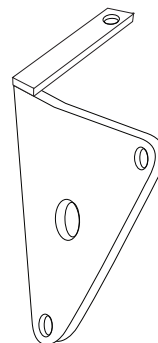
No.	QTY.	PART No.	DESCRIPTION	CHECK LIST
1.	1	151000-SSR	COMPRESSOR MOUNTING BRKT	_____
2.	1	156001-SSR	IDLER PULLEY MOUNTING BRKT w/ PS	_____
3.	1	191002-HSA	HARDWARE KIT	_____
4.	1	735055-CSA	259-289 CRANKSHAFT PULLEY KIT	_____

CHECKED BY: _____
PACKED BY: _____
DATE: _____

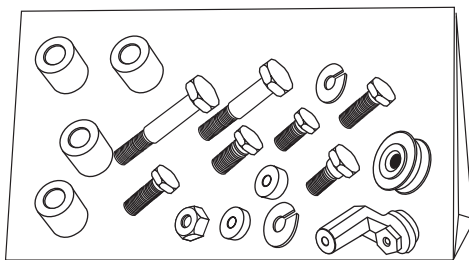
①



②



③



④

