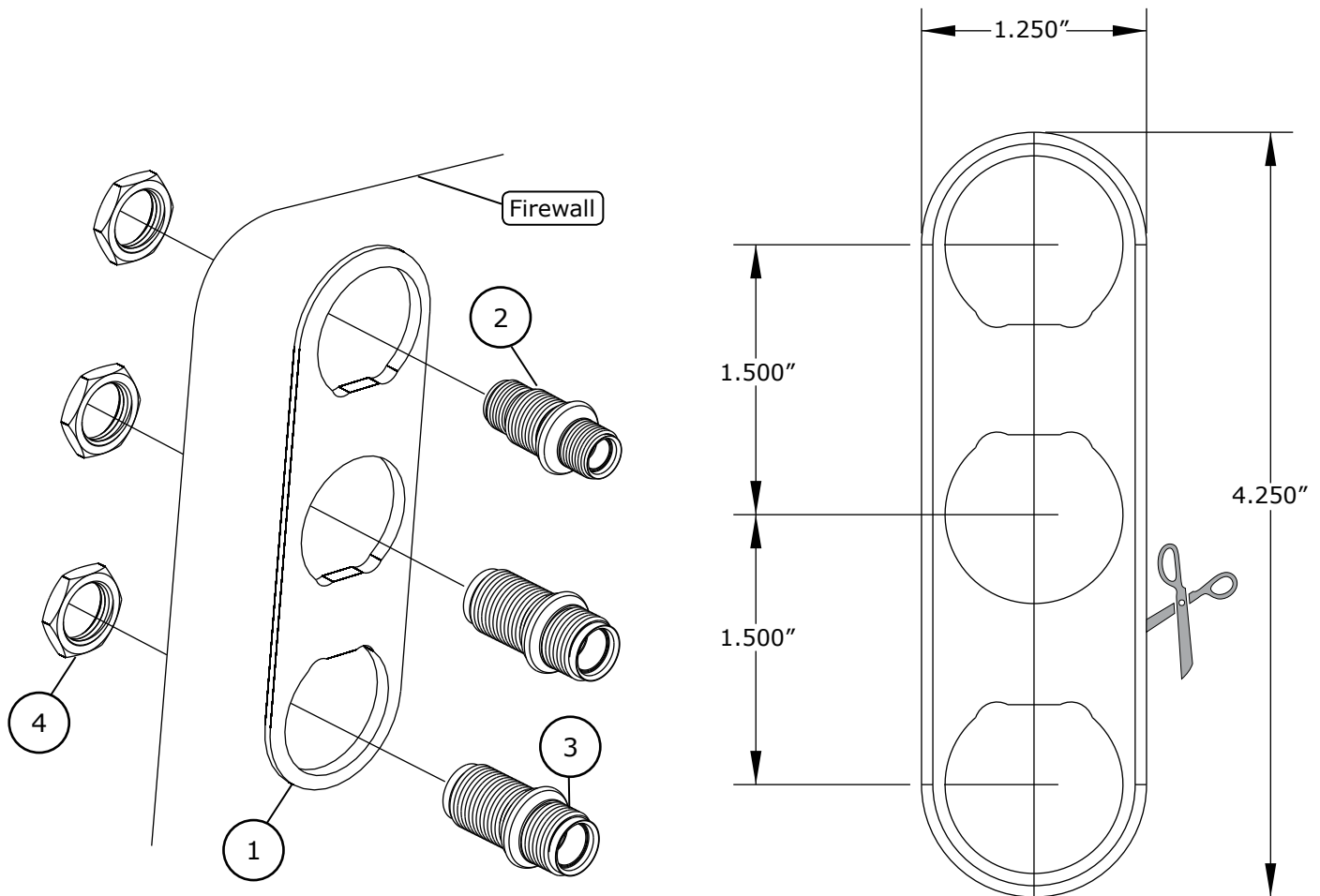




www.vintageair.com

Streamline Bulkhead 3-Way, In-line #8 - #10 Polished (383800)

1. Determine a suitable firewall location for the bulkhead, and cut out the bulkhead template.
 2. Level and tape the bulkhead template into place on the firewall.
 3. Using a small center punch, mark the center hole locations.
 4. Drill (3) 7/8" holes for the bulkhead fittings, and install the bulkhead plate and fittings as shown below.
- NOTE: The fittings may be arranged in any configuration.**



NOTE: Due to printing variances, measure the line below before using this template. If template is scaled properly, the line should measure 6 inches.



Packing List:

No.	Qty.	Part No.	Description
1.	1	383300	Bulkhead Plate, Streamline 3-Way In-line, Polished
2.	1	334008-VOR	Fitting, #8 Streamline, Bulkhead
3.	2	334010-VOR	Fitting, #10 Streamline, Bulkhead
4.	3	186078-NMR	Jam Nut, 7/8-14

Checked By: _____
Packed By: _____
Date: _____