

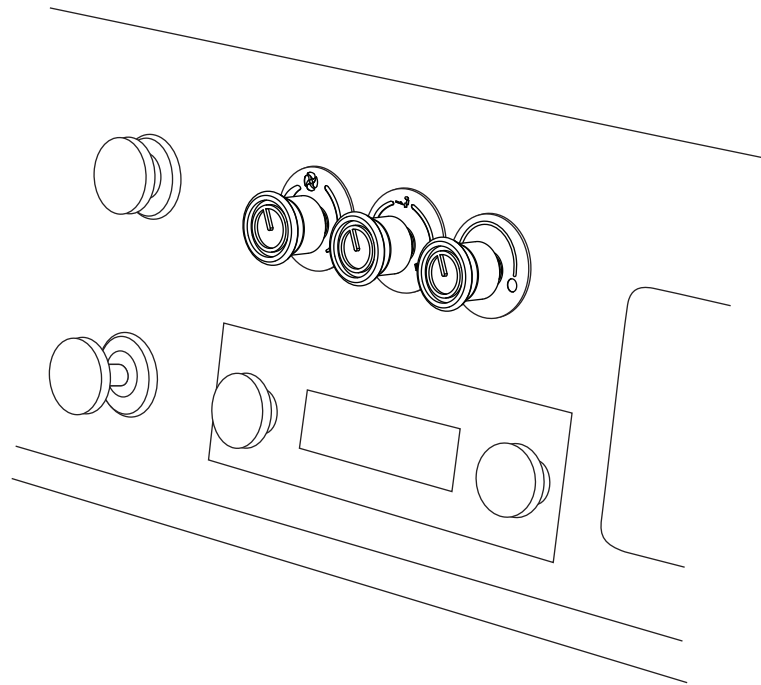


an ISO 9001:2015 Registered Company

1966-77 Ford Bronco

Control Panel Conversion Kit

474156



18865 Goll St. San Antonio, TX 78266
Phone: 800-862-6658
Sales: sales@vintageair.com
Tech Support: tech@vintageair.com
www.vintageair.com



www.vintageair.com

Table of Contents

Cover.....	1
Table of Contents.....	2
Packing List/Parts Disclaimer.....	3
Removing OEM Controls.....	4
Rotary Pot Installation.....	5
Final Steps.....	6
Wiring Diagram.....	7
Operation of Controls.....	8
Packing List.....	9

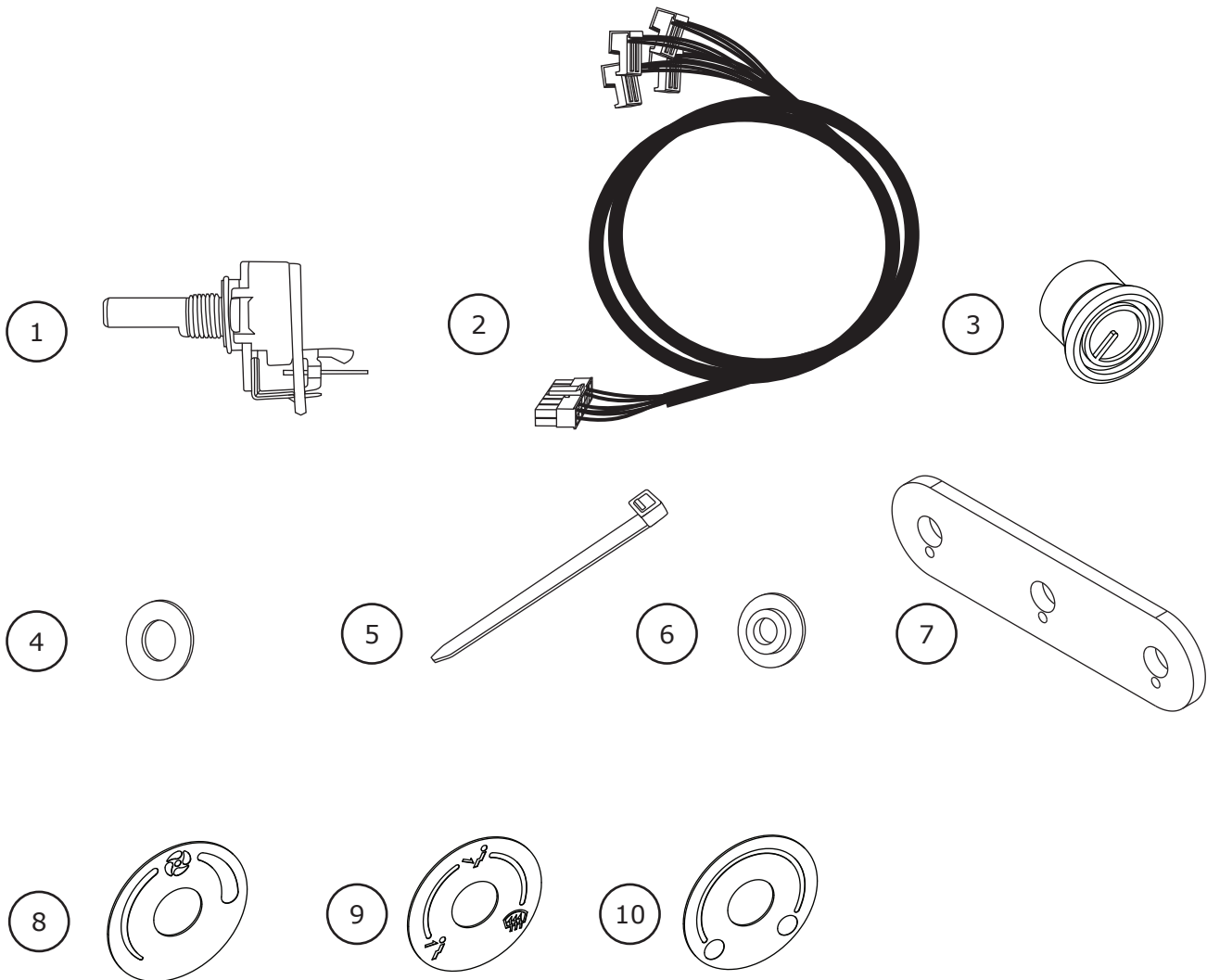


www.vintageair.com

Packing List: Control Panel Kit (474156)

No.	Qty.	Part No.	Description
1.	3	246018-0	Rotary Pot Assembly
2.	1	232002-VUA	Control Harness, Gen IV Universal
3.	3	497004	Knob, Soft Black Metric
4.	3	18543-WNS	Washer, 3/8" AN, Flat Stainless Steel
5.	5	21301-VUP	Tie Wrap, 4"
6.	3	117002	Nut, Control Pot Adapter
7.	1	648171	Bracket, Control Panel Backing
8.	1	205550	Label, Rotary Fan
9.	1	205551	Label, Rotary Mode
10.	1	205552	Label, Rotary Temperature

**** Before beginning installation, open all packages and check contents of shipment. Please report any shortages directly to Vintage Air within 15 days. After 15 days, Vintage Air will not be responsible for missing or damaged items.**



NOTE: Images may not depict actual parts and quantities. Refer to packing list for actual parts and quantities.



www.vintageair.com

Removing OEM Controls

1. Disconnect the cables and wires from the back of the controls.
2. Remove the (3) OEM controls (See Figure 1, below) (discard).

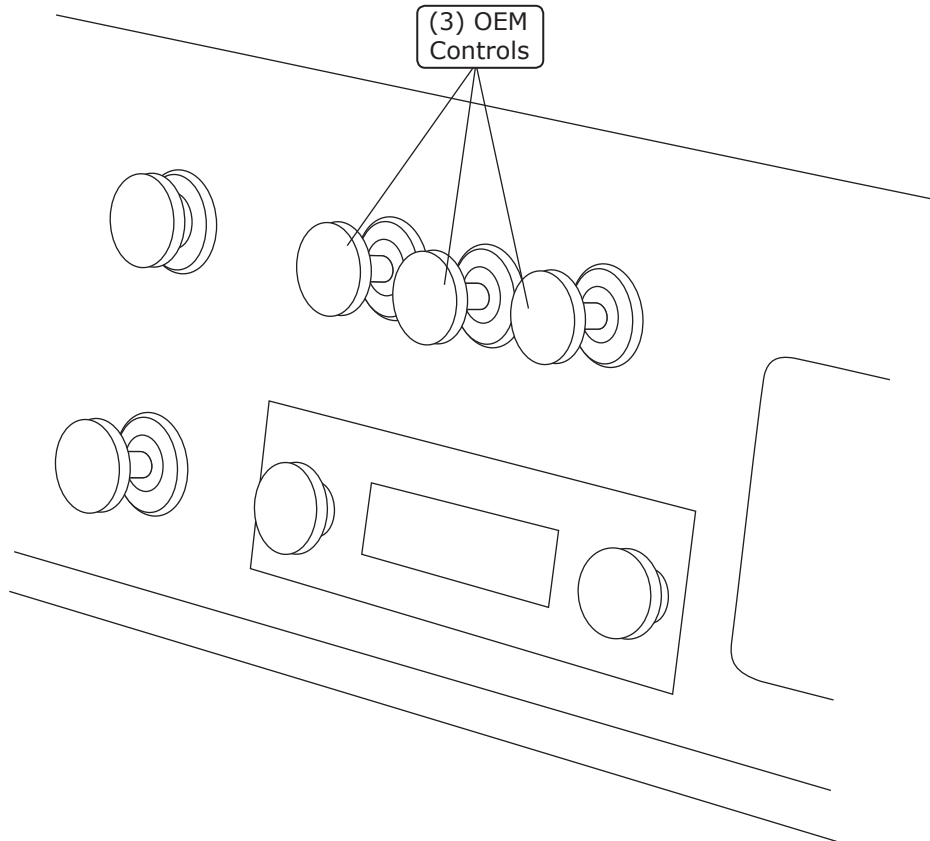


Figure 1



www.vintageair.com

Rotary Pot Installation

1. Locate the (3) rotary pot assemblies, and install them into the dash as shown in Figure 1, below.
2. Tie wrap wires to the rotary pots as shown in Figure 1a, below.

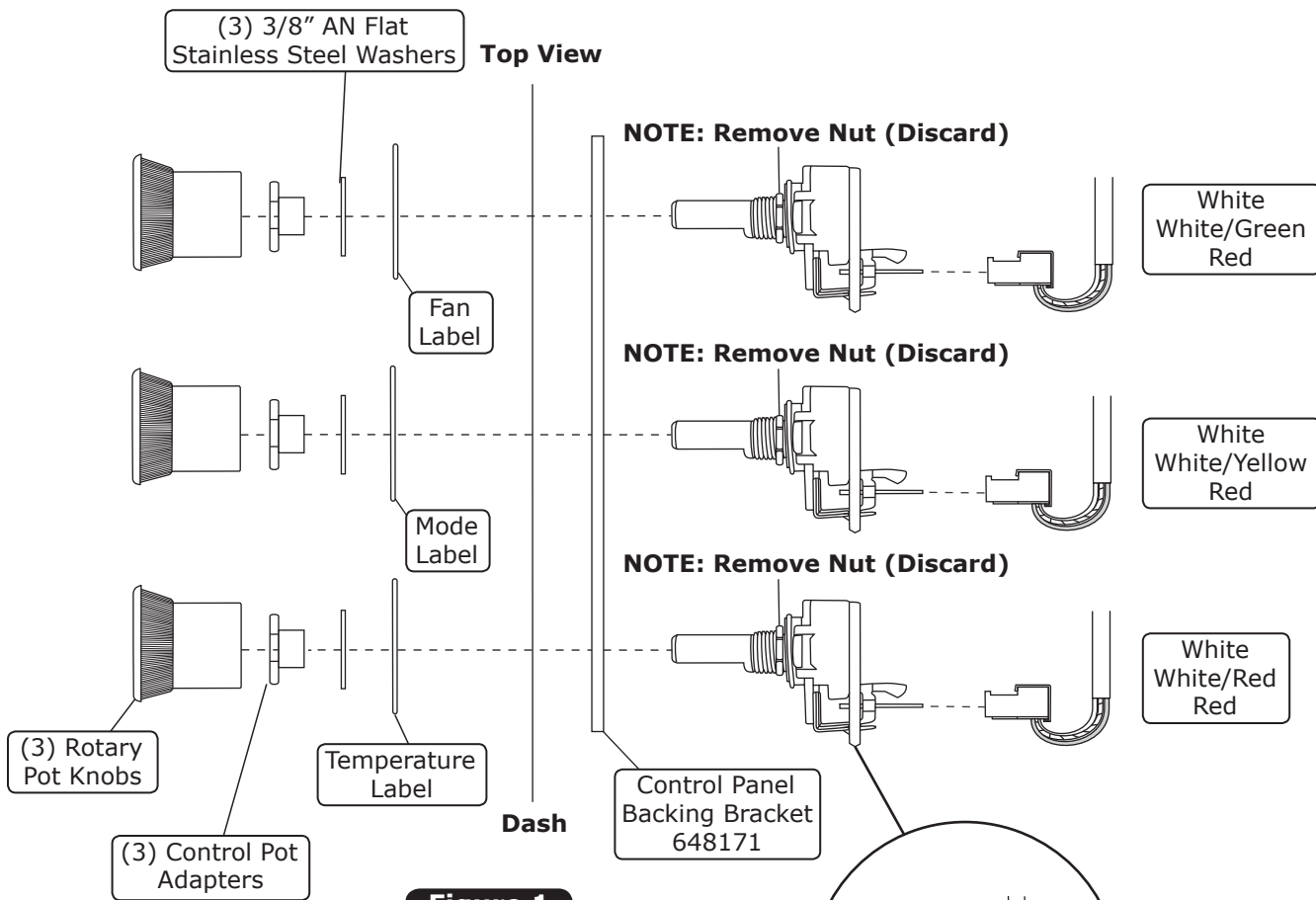


Figure 1

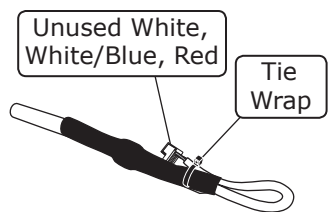


Figure 1a

NOTE: Tie the unused wire to the wiring harness as shown below.



www.vintageair.com

Final Steps

1. Plug the wiring harnesses into the ECU module on the sub case (See Figure 1, below).
2. Wire according to the wiring diagram on Page 7.

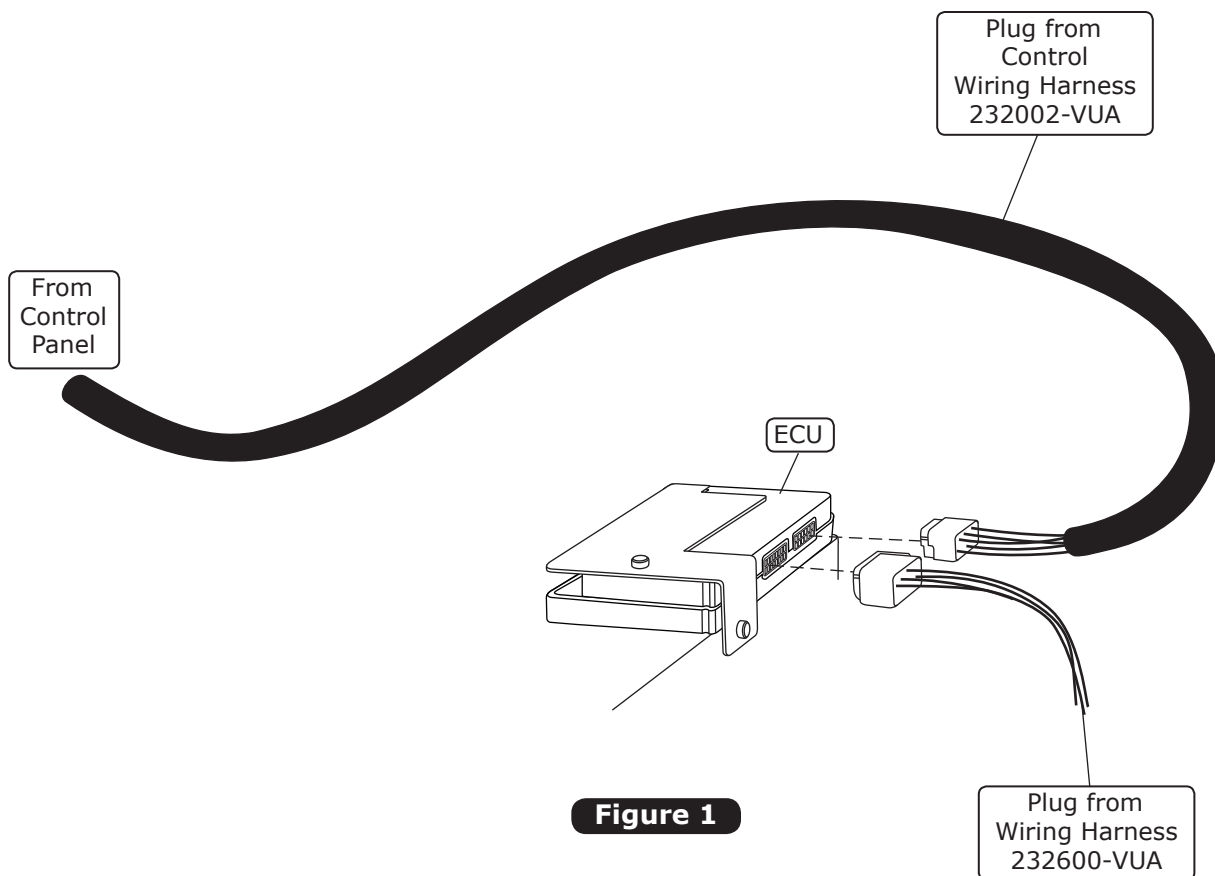


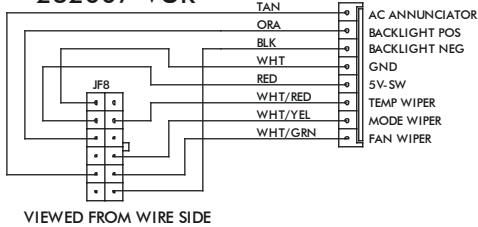
Figure 1



www.vintageair.com

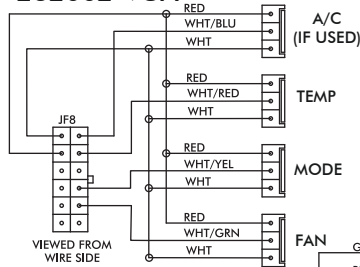
Wiring Diagram

232007-VUR



VIEWED FROM WIRE SIDE

232002-VUA

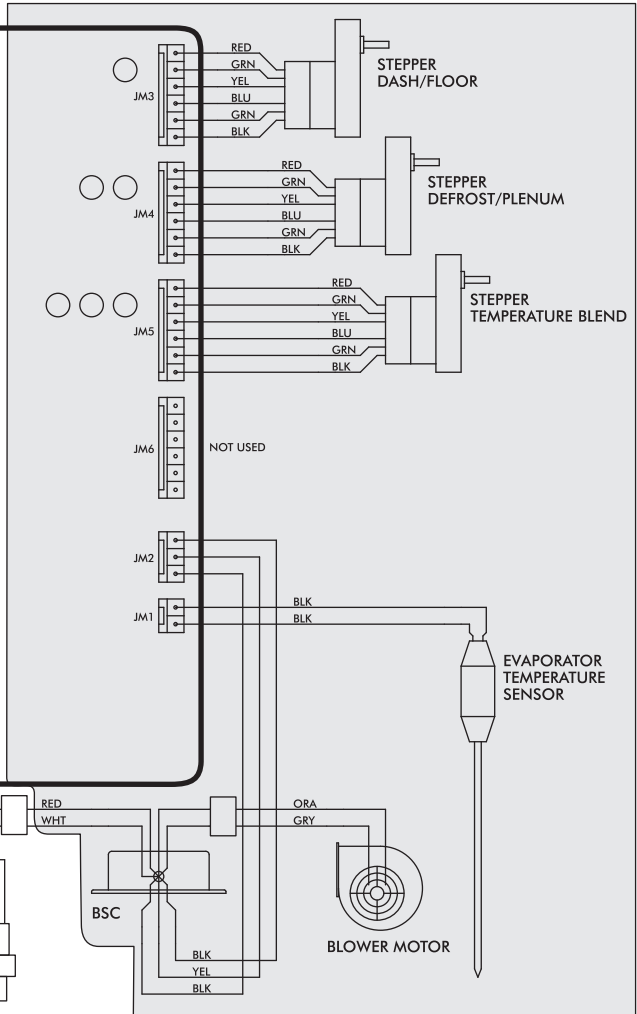


VIEWED FROM WIRE SIDE

GEN IV ECU

GEN IV WIRING DIAGRAM
REV E, 10/6/2017

PRE-WIRED



PROGRAM

N/A
* DASH LAMP
(IF USED)
*** WIDE OPEN
THROTTLE SWITCH
(OPTIONAL)

IGNITION SWITCH + 12v

** CIRCUIT BREAKER
30 AMP

COMPRESSOR RELAY

BINARY OR TRINARY
SAFETY SWITCH

CMPR

HEATER CONTROL VALVE

NOTE: = CHASSIS GROUND

* Dash lamp is used only with type 232007-VUR harness.

** Warning: Always mount circuit breaker as close to the battery as possible. (NOTE: Wire between battery and circuit breaker is unprotected and should be carefully routed to avoid a short circuit).

*** Wide open throttle switch contacts close only at full throttle, which disables A/C compressor.



www.vintageair.com

Operation of Controls

On Gen IV systems with three lever/knob controls, the temperature control toggles between heat and A/C operations. To activate A/C, move the temperature lever/knob all the way to cold and then back it off to the desired vent temperature. For heat operation, move the temperature lever/knob all the way to hot and then adjust to the desired vent temperature. The blower will momentarily change speed, each time you toggle between operations, to indicate the change.

Blower Speed

This lever/knob controls blower speed, from OFF to HI.

Mode Control

This lever/knob controls the mode positions, from DASH to FLOOR to DEFROST, with a blend in between.

Temperature Control

This lever/knob controls the temperature, from HOT to COLD.

Blower Speed



Mode Control



Temperature Control



A/C Operation

Blower Speed

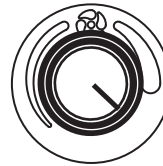
Adjust to desired speed.

Mode Control

Adjust to desired mode position (DASH position recommended).

Temperature Control

For A/C operation, adjust to coldest position to engage compressor (Adjust between HOT and COLD to reach desired temperature).



Heat Operation

Blower Speed

Adjust to desired speed.

Mode Control

Adjust to desired mode position (FLOOR position recommended).

Temperature Control

For maximum heating, adjust to hottest position (Adjust between HOT and COLD to reach desired temperature).



Defrost/De-fog Operation

Blower Speed

Adjust to desired speed.

Temperature Control

Adjust to desired temperature.

Mode Control

Adjust to DEFROST position for maximum defrost, or between FLOOR and DEFROST positions for a bi-level blend (Compressor is automatically engaged).



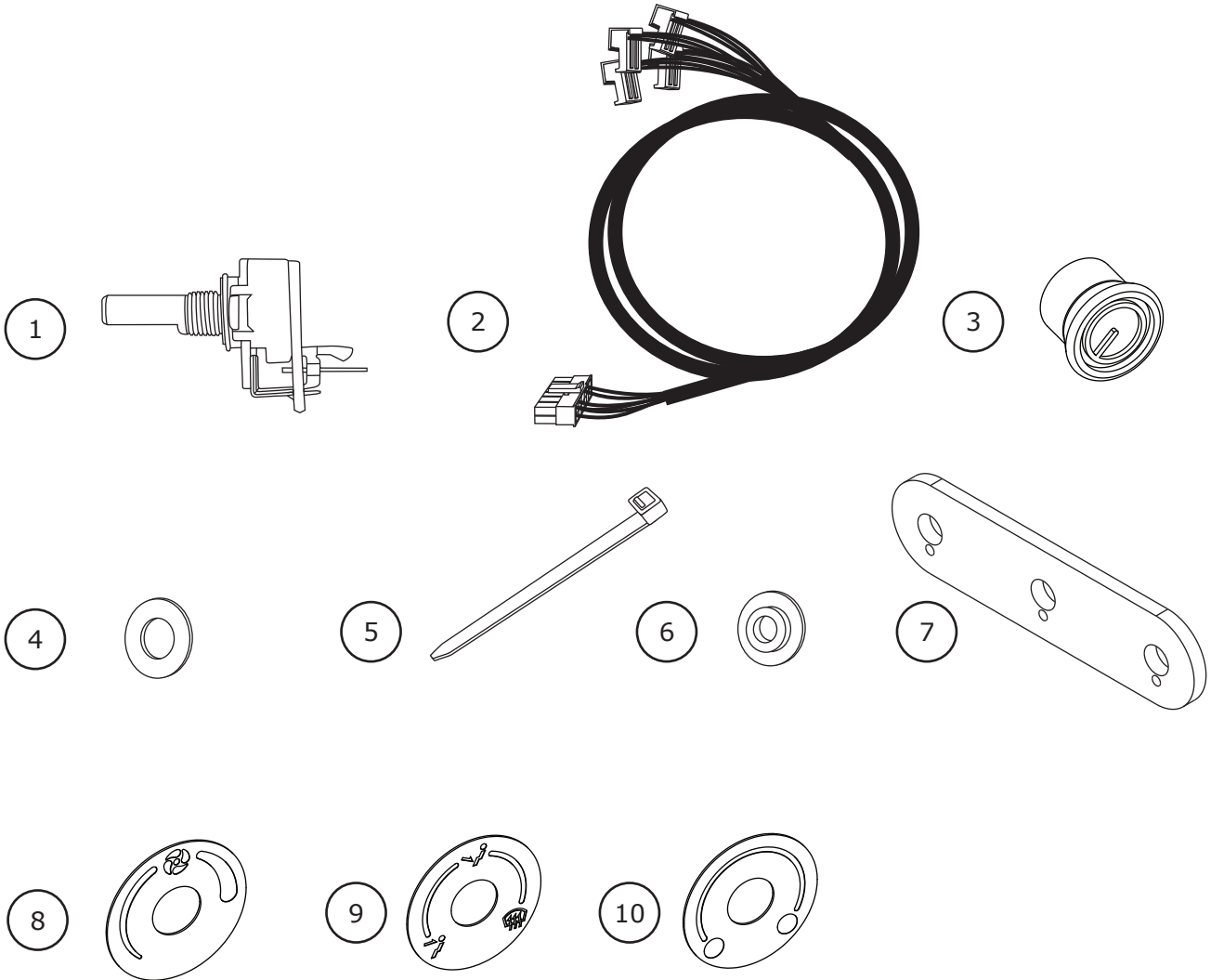


www.vintageair.com

Packing List: Control Panel Kit (474156)

No.	Qty.	Part No.	Description
1.	3	246018-0	Rotary Pot Assembly
2.	1	232002-VUA	Control Harness, Gen IV Universal
3.	3	497004	Knob, Soft Black Metric
4.	3	18543-WNS	Washer, 3/8" AN, Flat Stainless Steel
5.	5	21301-VUP	Tie Wrap, 4"
6.	3	117002	Nut, Control Pot Adapter
7.	1	648171	Bracket, Control Panel Backing
8.	1	205550	Label, Rotary Fan
9.	1	205551	Label, Rotary Mode
10.	1	205552	Label, Rotary Temperature

Checked By: _____
 Packed By: _____
 Date: _____



**NOTE: Images may not depict actual parts and quantities.
 Refer to packing list for actual parts and quantities.**