

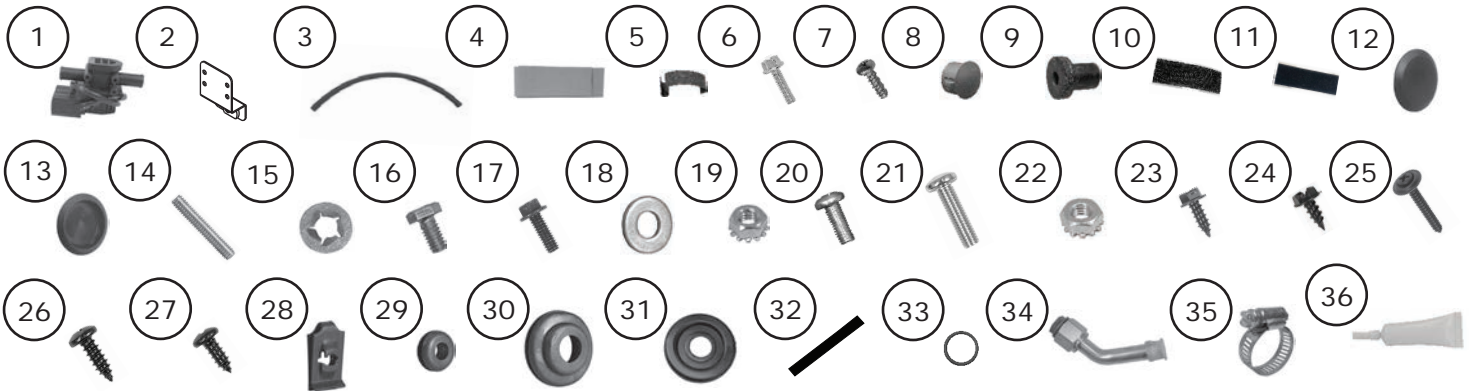


www.vintageair.com

Packing List: 1967-68 Camaro/Firebird without A/C Gen 5 Installation Kit (631244)

| No. | Qty. | Part No. | Description |
|-----|------|------------|--|
| 1. | 1 | 461171 | Valve, Heater Control, 3-Wire |
| 2. | 1 | 648284 | Bracket, Heater Valve Support |
| 3. | 15" | 31050-VUD | Drain Hose, 1/2" |
| 4. | 20" | 49003-VUP | Press Tape |
| 5. | 8 | 187926 | Spring Clip |
| 6. | 2 | 188888 | Bolt, 1/4-20 x 1", Serrated Flange, Zinc |
| 7. | 4 | 185588 | Screw, #10 x 5/8" |
| 8. | 3 | 31102-GUR | Plastic Plug, 1/2" |
| 9. | 2 | 18102-VUB | Well Nut, 1/4-20 |
| 10. | 2 | 205554 | Velcro Hook, 1" x 3" |
| 11. | 2 | 205555 | Velcro Loop, 1" x 3" |
| 12. | 1 | 33173-VUI | Plastic Plug, 1 1/2" |
| 13. | 1 | 317101 | Plastic Plug, 1 5/8" |
| 14. | 2 | 180880 | Stud, 1/4-20 x 1 1/2", Full-Threaded |
| 15. | 1 | 189125-MUR | Bolt Retainer, 1/4", Pushnut |
| 16. | 1 | 18287-VUB | Bolt, 1/4-20 x 1/2", Hex |
| 17. | 5 | 182872 | Bolt, 1/4-20 x 3/4", Serrated Flange, Black Zinc |
| 18. | 1 | 186011 | Washer, 9/32", Flat |
| 19. | 2 | 18152-VUB | Nut with Star Washer, 1/4-20 |
| 20. | 4 | 18250-VUB | Screw, 10-32 x 1/2", Pan Head |
| 21. | 1 | 18258-VUB | Screw, 10-32 x 3/4" |
| 22. | 2 | 18251-VUB | Nut with Star Washer, 10-32 |
| 23. | 2 | 18266-VUB | Screw, #14 x 3/4", Washer Head |
| 24. | 2 | 18247-VUB | Screw, #10 x 1/2", Sheet Metal |
| 25. | 5 | 181076 | Screw with Washer, #8 x 1 1/4", Countersunk |
| 26. | 11 | 18235-VUB | Screw, #8 x 1/2", Pan Head |
| 27. | 6 | 18233-VUB | Screw, #6 x 3/8", Pan Head |
| 28. | 3 | 189801 | U-nut, #8 |
| 29. | 2 | 33144-VUI | Grommet, 7/8" O.D. x 3/8" I.D. |
| 30. | 6 | 33137-VUI | Grommet, Large |
| 31. | 2 | 33133-VUI | Grommet, 1 1/4" O.D. x 1" with 1/2" Hole |
| 32. | 20" | 200101 | Felt Strip with Adhesive, 1/8" x 1/4" |
| 33. | 2 | 33859-VUF | O-ring, #10 |
| 34. | 2 | 121034 | Fitting, 45° Heater |
| 35. | 6 | 31606-VUA | Hose Clamp, #12 |
| 36. | 1 | 41117-VUP | Refrigerant Oil |

Checked By: _____
Packed By: _____
Date: _____



**NOTE: Images may not depict actual parts and quantities.
Refer to packing list for actual parts and quantities.**