

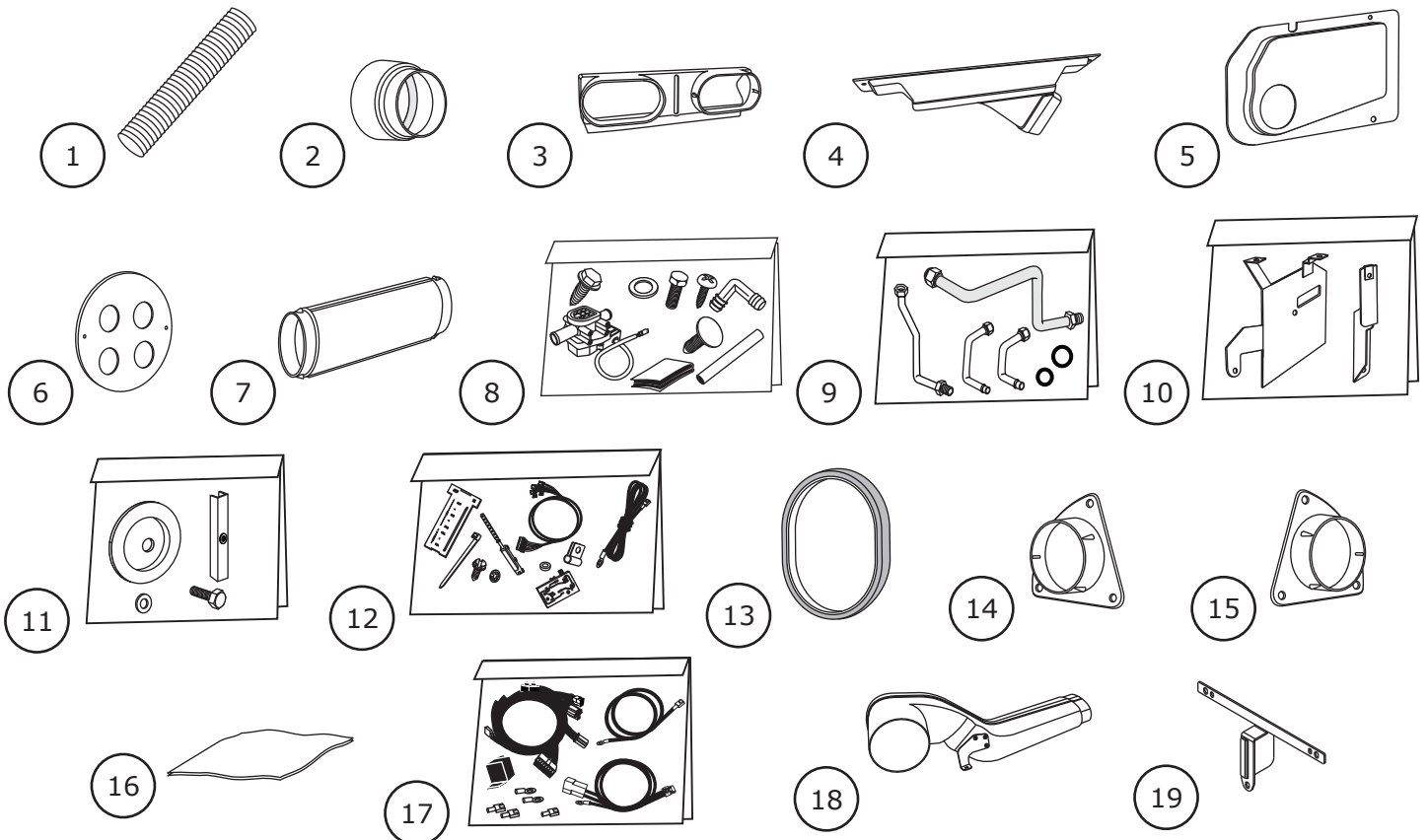


www.vintageair.com

Packing List: Accessory Kit 1968 Chevrolet Corvette with Factory Air (784170)

No.	Qty.	Part No.	Description
1.	11'	06250-VUE	Duct Hose, 2 1/2"
2.	2	494570	Hose Adapter, Driver and Passenger Side Inner, OEM
3.	1	625082	Hose Adapter, Center Louver, OEM
4.	1	625090	Defrost Duct Assembly
5.	1	627069-CCE	Firewall Cover
6.	1	648219	Firewall Cover Cap
7.	1	605173-PCA	Duct Extension Assembly, Passenger Side
8.	1	634168	Installation Kit
9.	1	09155-PCA	Hardline Kit
10.	1	644173-PCA	Bracket Kit, Evaporator
11.	1	640164-PCA	Fresh Air Cap Assembly
12.	1	473170	Control Panel Kit
13.	1	494571	Fresh Air Cap, Kick Panel
14.	1	625079-CCE	Hose Adapter, Passenger Side Outer, OEM
15.	1	625080-CCE	Hose Adapter, Driver Side Outer, OEM
16.	1	200915-AUR	Polyethylene Sheet, 4 MIL 9" x 15"
17.	1	232600-VUA	Wiring Kit, Gen IV Universal
18.	1	496137	Louver Adapter Assembly, Driver Side
19.	1	643161	Bracket, Center Louver

Checked By: _____
Packed By: _____
Date: _____



**NOTE: Images may not depict actual parts and quantities.
Refer to packing list for actual parts and quantities.**