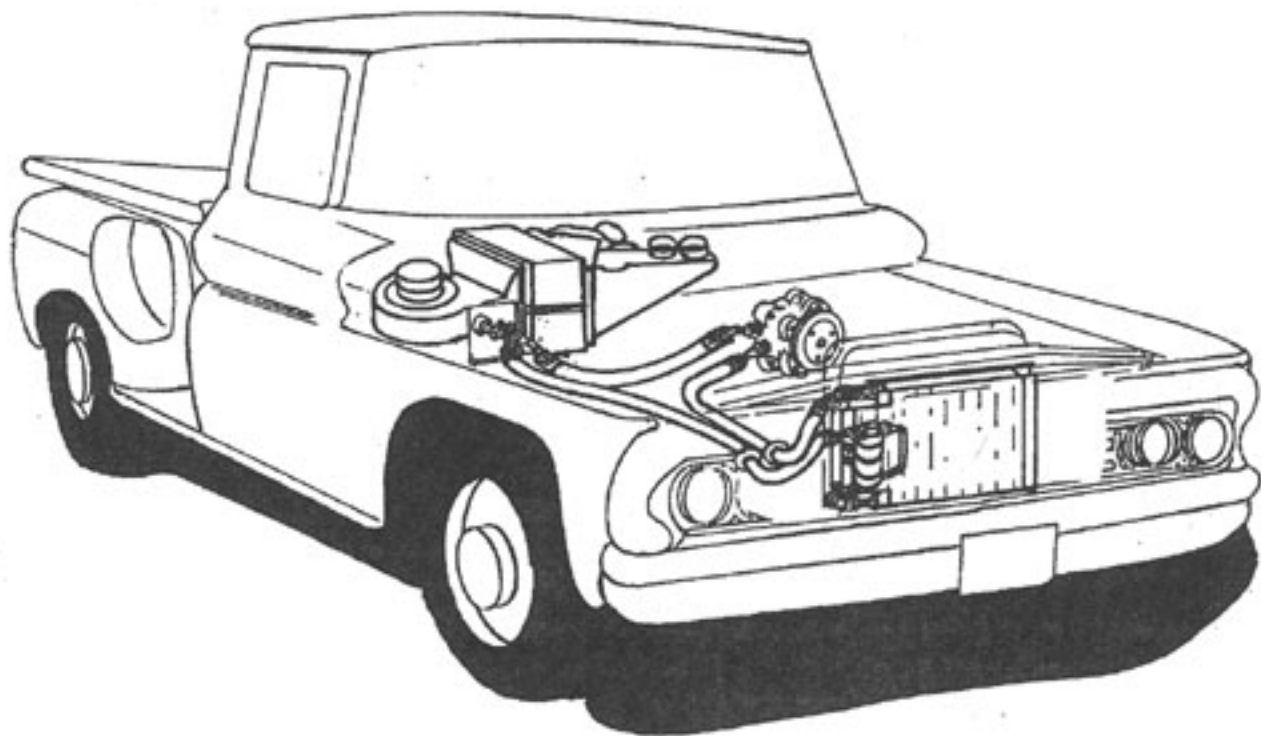


ADVANTAGE

INSTALLATION INSTRUCTIONS FOR
1960-63 CHEVROLET TRUCK
(75060-LCZ-A)



1960-63 CHEVROLET TRUCK

75060-LCZ-A

IMPORTANT NOTICE-PLEASE READ

**FOR MAXIMUM SYSTEM PERFORMANCE
VINTAGE AIR RECOMMENDS THE FOLLOWING:**

32518-VUF - 18" FAN

32000-VUF - FAN CLUTCH

SAFETY SWITCHES:

YOUR NEW VINTAGE AIR SYSTEM INCLUDES A COMPRESSOR SAFETY SWITCH (BINARY SWITCH). A BINARY SWITCH (PART #11078-VUS) DISENGAGES THE COMPRESSOR CLUTCH IN CASE OF EXTREME LOW PRESSURE CONDITION (REFRIGERANT LOSS) OR EXCESSIVELY HIGH HEAD PRESSURE (380 lb.), TO PREVENT COMPRESSOR DAMAGE OR HOSE RUPTURE. AN OPTIONAL TRINARY SWITCH (PART# 11076-VUS) COMBINES HI/LO PRESSURE PROTECTION WITH AN ELECTRIC FAN OPERATION SIGNAL AT 220 lbs. COMPRESSOR SAFETY SWITCHES ARE EXTREMELY IMPORTANT SINCE AN A/C SYSTEM RELIES ON REFRIGERANT TO CARRY LUBRICATION THROUGH THE SYSTEM.

SERVICE INFO:

THE PROPER AMOUNT OF REFRIGERANT IS CRITICAL TO PROPER SYSTEM OPERATION. VINTAGE AIR RECOMMENDS OUR SYSTEMS BE CHARGED BY WEIGHT WITH A QUALITY CHARGING STATION OR SCALE.

EVACUATE THE SYSTEM (>28" Hg) FOR 35-45 MINUTES WITH SYSTEM COMPONENTS (DRIER, COMPRESSOR, EVAPORATOR AND CONDENSER) AT A TEMPERATURE OF AT LEAST 85° F. ON A COOL DAY THE COMPONENTS CAN BE HEATED WITH A HEAT GUN OR BY RUNNING THE ENGINE WITH THE HEATER ON BEFORE EVACUATING. LEAK CHECK AND CHARGE TO SPECIFICATIONS.

REFRIGERANT CAPACITIES

134a SYSTEM

CHARGE WITH 1.8 LBS. OF REFRIGERANT

R-12 SYSTEM

CHARGE WITH 2.0 LBS. OF REFRIGERANT

LUBRICANT CAPACITIES

NEW COMPRESSOR - NO ADDITIONAL OIL NEEDED
USED COMPRESSOR - CONSULT VINTAGE AIR

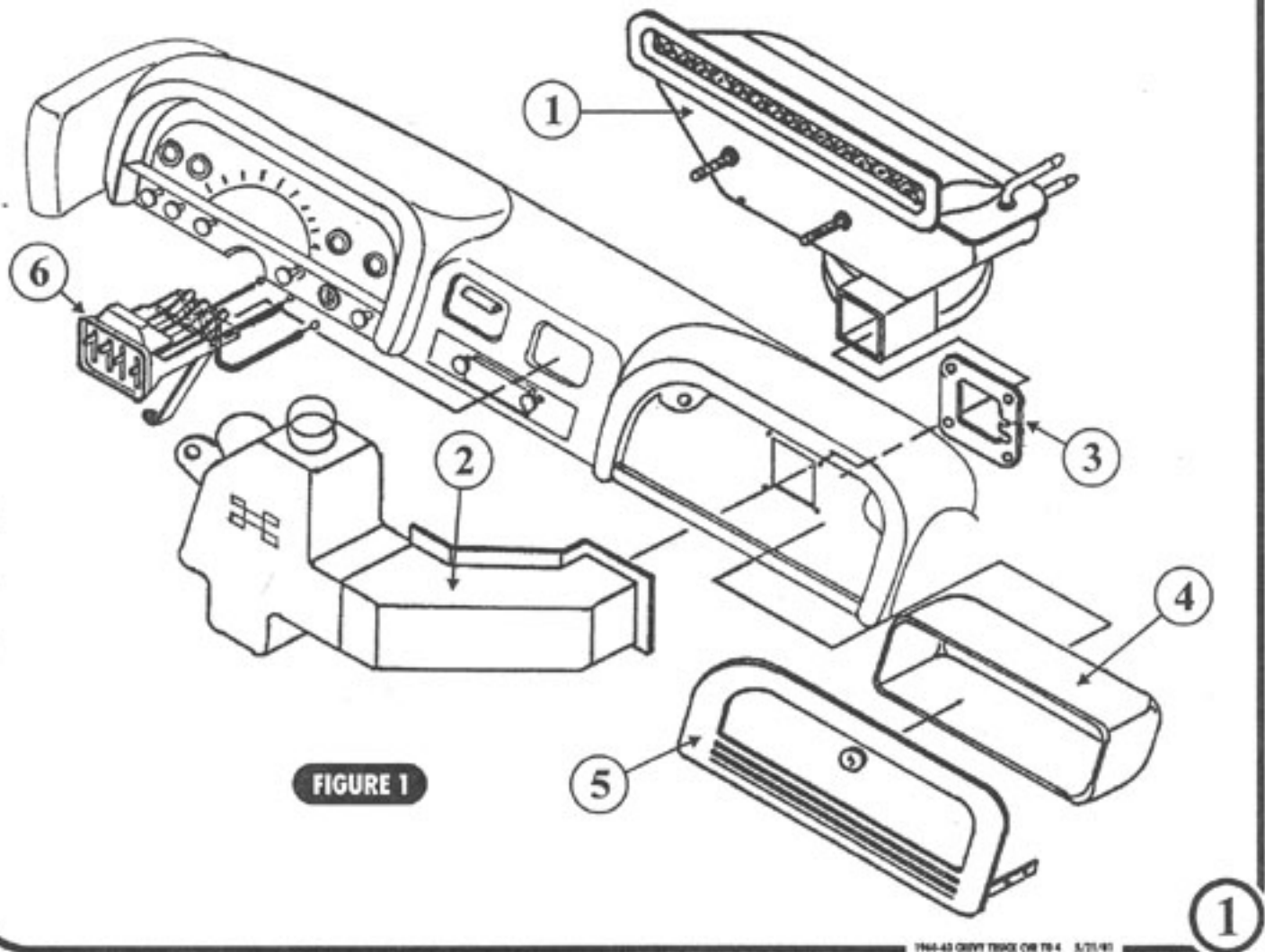
INSTALLATION INSTRUCTIONS FOR

BEFORE STARTING THE AIR CONDITIONER INSTALLATION, CHECK FOR PROPER OPERATION OF ALL COMPONENTS (RADIO, LIGHTS, WIPERS, ETC.). STUDY THE INSTRUCTIONS, ILLUSTRATIONS AND DIAGRAMS. DISCONNECT THE BATTERY. FOR EASE OF INSTALLATION CHECK OFF (✓) EACH PROCEDURE PRIOR TO MOVING ON TO THE NEXT STEP.

PASSENGER COMPARTMENT

REMOVE THE FOLLOWING:

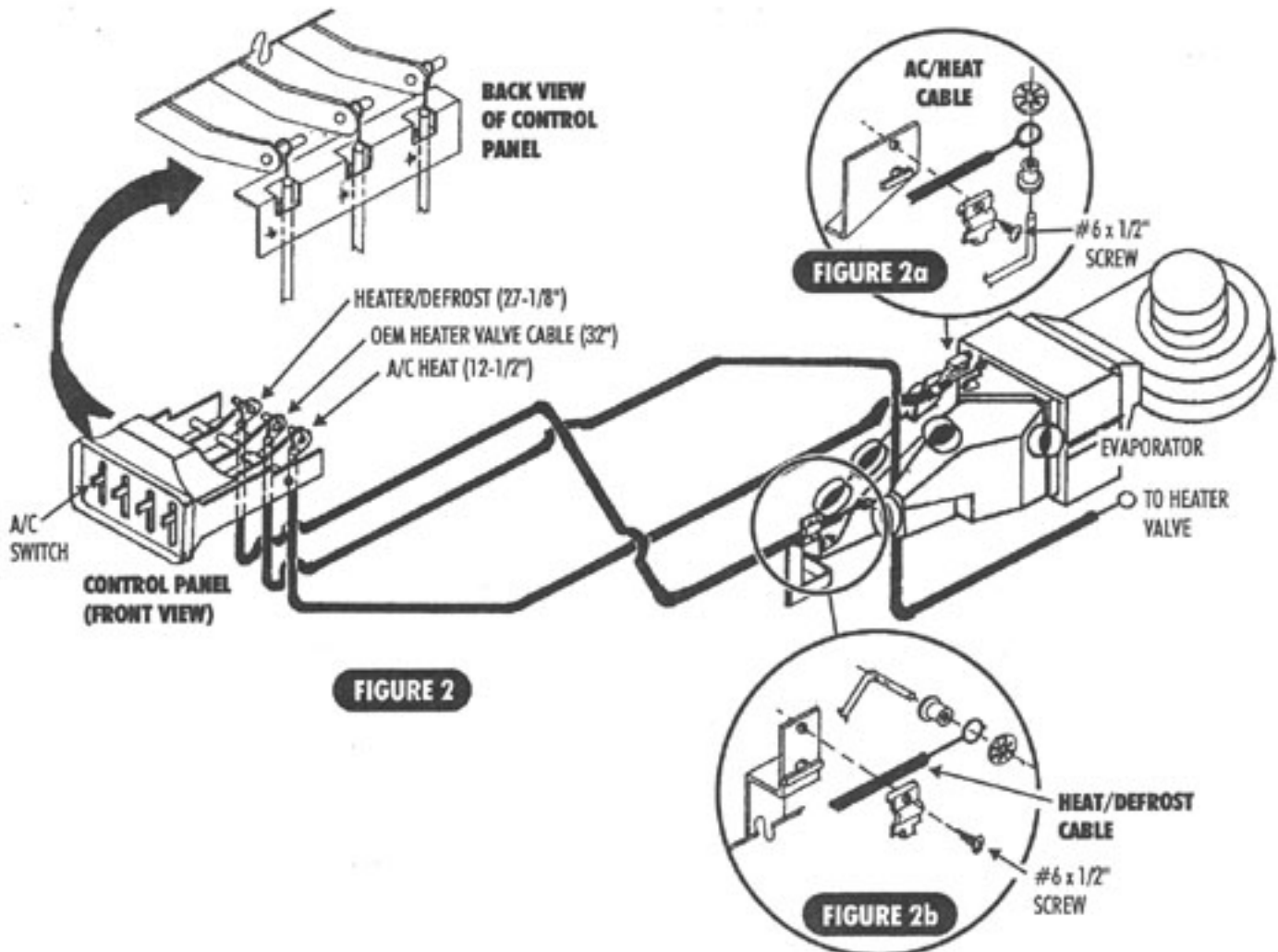
- 1. HEATER ASSEMBLY ENGINE SIDE (DISCARD).
- 2. HEATER DUCT (DISCARD).
- 3. FIREWALL PLATE (DISCARD).
- 4. GLOVE BOX.
- 5. GLOVE BOX DOOR.
- 6. CONTROL PANEL AS FIGURE 1 SHOWS.



PASSENGER COMPARTMENT

CABLES INSTALLATION:

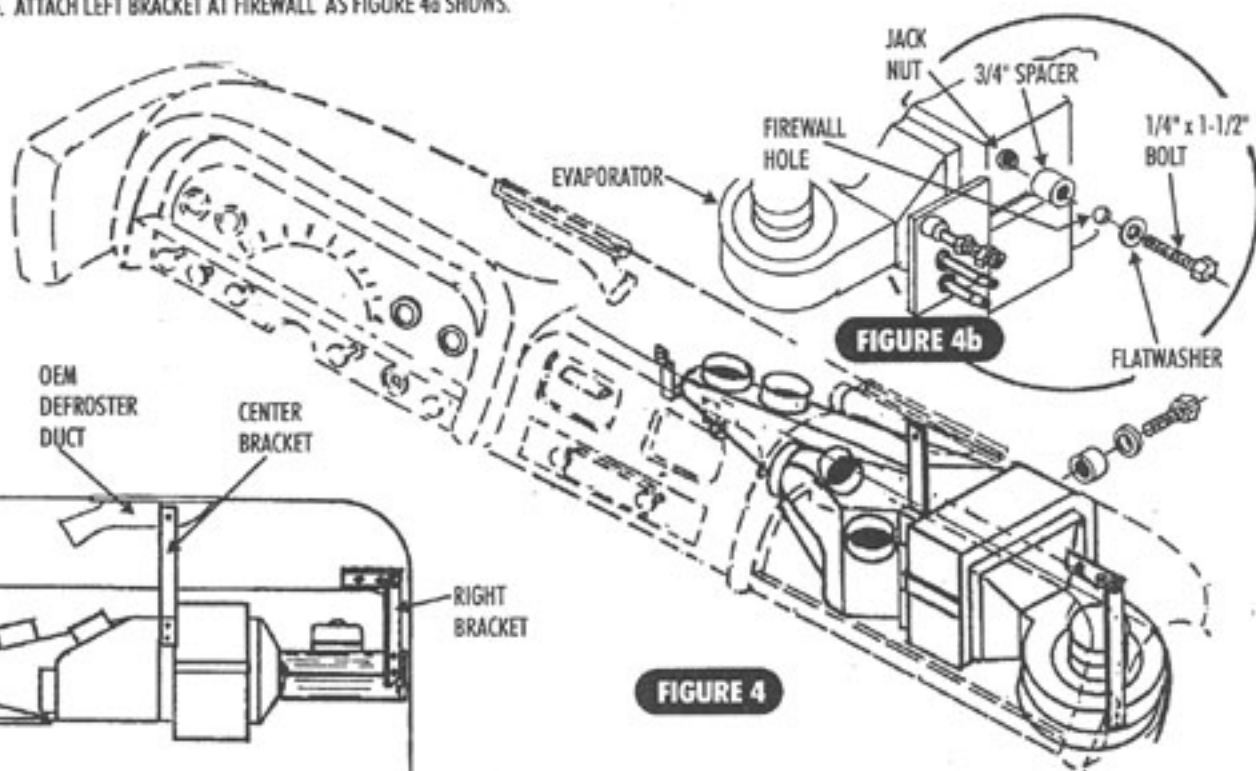
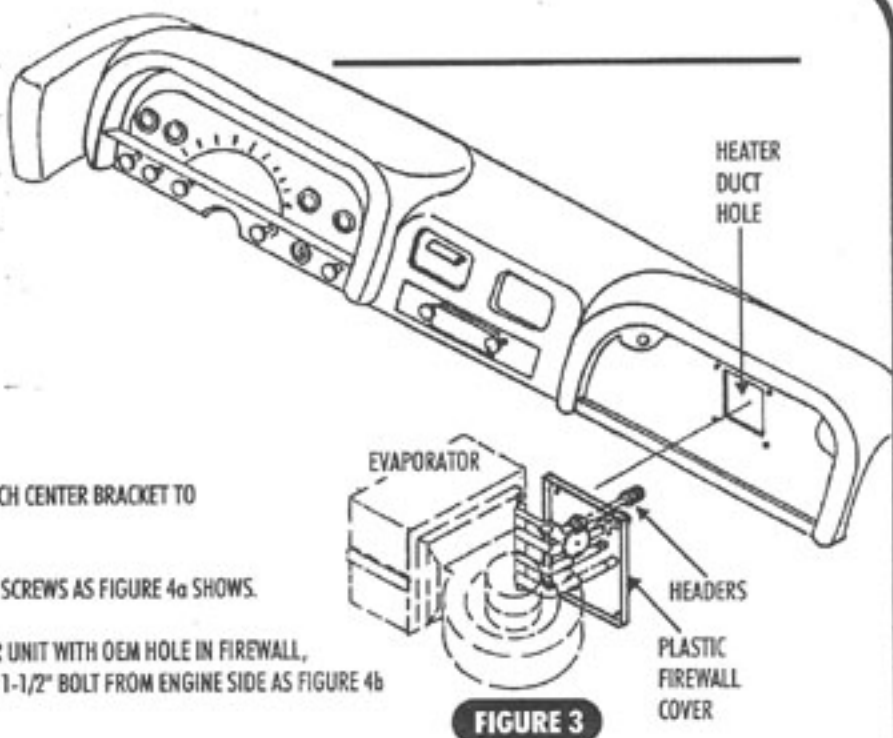
- 1. REMOVE (2) OEM CABLES IN CONTROL PANEL AND ATTACH (2) NEW CABLES PROVIDED, AS FIGURE 2 SHOWS.
- 2. ATTACH NEW CABLES PROVIDED AT EVAPORATOR DOORS AS FIGURE 2A & 2B SHOWS.
- 3. DIRECT THE CABLES FOR HEATER/VALVE BETWEEN EVAPORATOR DUCTS AS FIGURE 2 SHOWS.



PASSENGER COMPARTMENT

EVAPORATOR INSTALLATION:

1. LAY EVAPORATOR UP, DIRECT FIRST ALL THE LINES WITH PLASTIC FIREWALL COVER TO OEM HEATER DUCT HOLE AS FIGURE 3 SHOWS
2. RAISE THE EVAPORATOR BLOWER UP AND ATTACH CENTER BRACKET TO OEM DEFROST AS FIGURE 4a SHOWS.
3. ATTACH RIGHT BRACKET AT FIREWALL WITH (2) SCREWS AS FIGURE 4a SHOWS.
4. UNDER HOOD ALIGN JACK NUT IN EVAPORATOR UNIT WITH OEM HOLE IN FIREWALL, INSTALL 3/4" SPACER, FLATWASHER AND 1/4" x 1-1/2" BOLT FROM ENGINE SIDE AS FIGURE 4b SHOWS.
5. ATTACH LEFT BRACKET AT FIREWALL AS FIGURE 4a SHOWS.



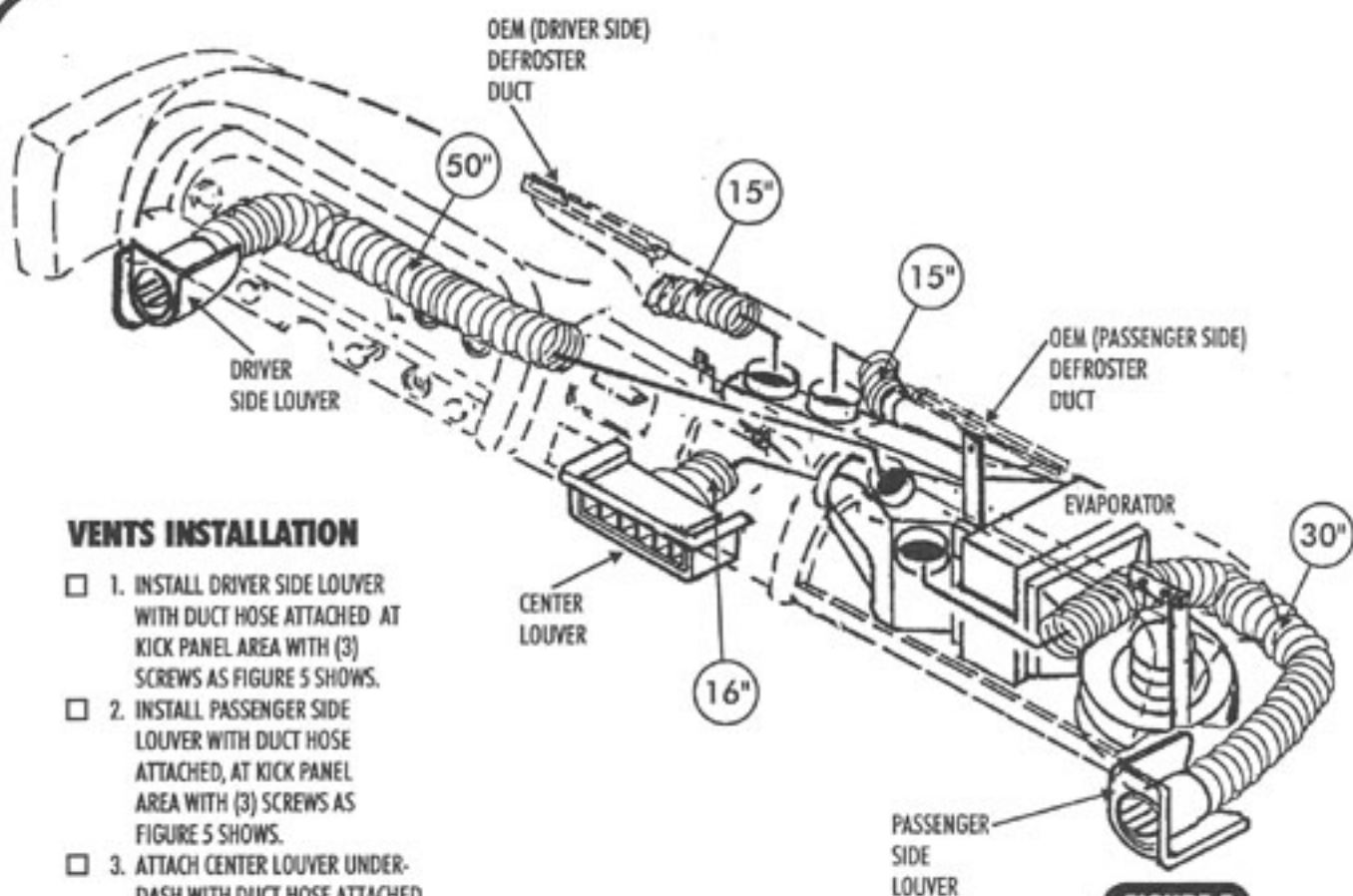


FIGURE 5

VENTS INSTALLATION

- 1. INSTALL DRIVER SIDE LOUVER WITH DUCT HOSE ATTACHED AT KICK PANEL AREA WITH (3) SCREWS AS FIGURE 5 SHOWS.
- 2. INSTALL PASSENGER SIDE LOUVER WITH DUCT HOSE ATTACHED, AT KICK PANEL AREA WITH (3) SCREWS AS FIGURE 5 SHOWS.
- 3. ATTACH CENTER LOUVER UNDER-DASH WITH DUCT HOSE ATTACHED AS FIGURE 5 SHOWS.
- 4. ROUTE THE (2") DUCT HOSE FROM EVAPORATOR TO OEM DEFROSTER DUCTS. (DRIVER SIDE 15" PASSENGER SIDE 15").
- 5. INSTALL AND ROUTE THE (2-1/2") DUCT HOSES FROM ALL THE LOUVERS ON DASH AND KICK PANELS TO EVAPORATOR AS FIGURE 5 SHOWS. (2-1/2") DUCT HOSE FROM CENTER LOUVER TO EVAPORATOR 16". (2-1/2") DUCT HOSE FROM DRIVER LOUVER TO EVAPORATOR 50". (2-1/2") DUCT HOSE FROM PASSENGER SIDE LOUVER TO EVAPORATOR 30".
- 6. ATTACH WIRING AT UNIT AS WIRING DIAGRAM SHOWS ON PAGE 7.

GLOVE BOX INSTALLATION

- 1. INSTALL NEW GLOVE BOX PROVIDED AS FIGURE 6 SHOWS.
- 2. RE-INSTALL ALL ITEMS REMOVED AT THIS TIME.

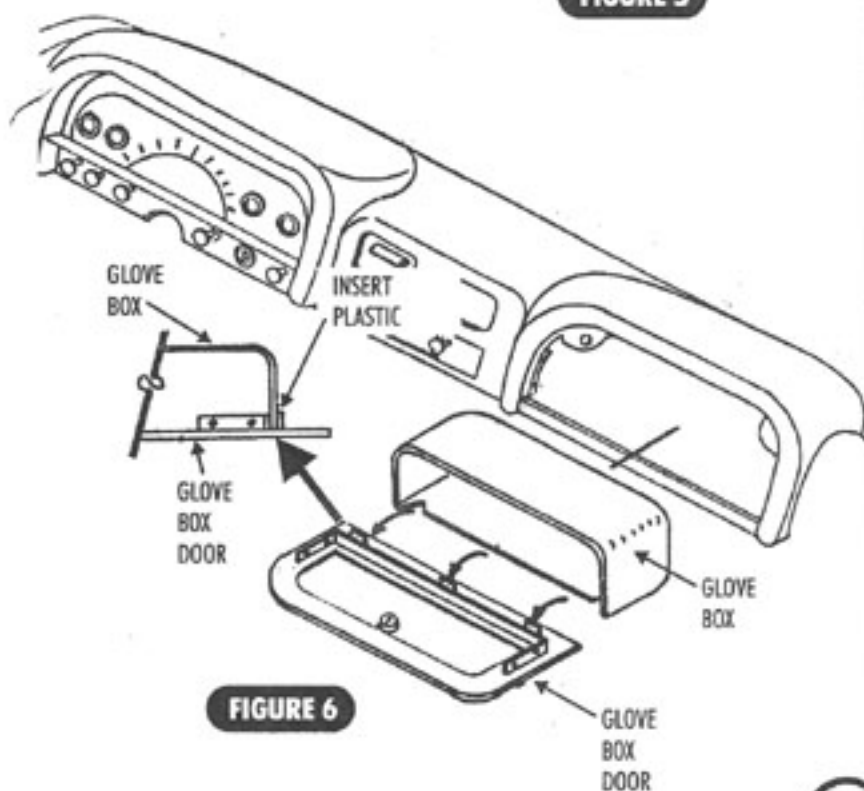


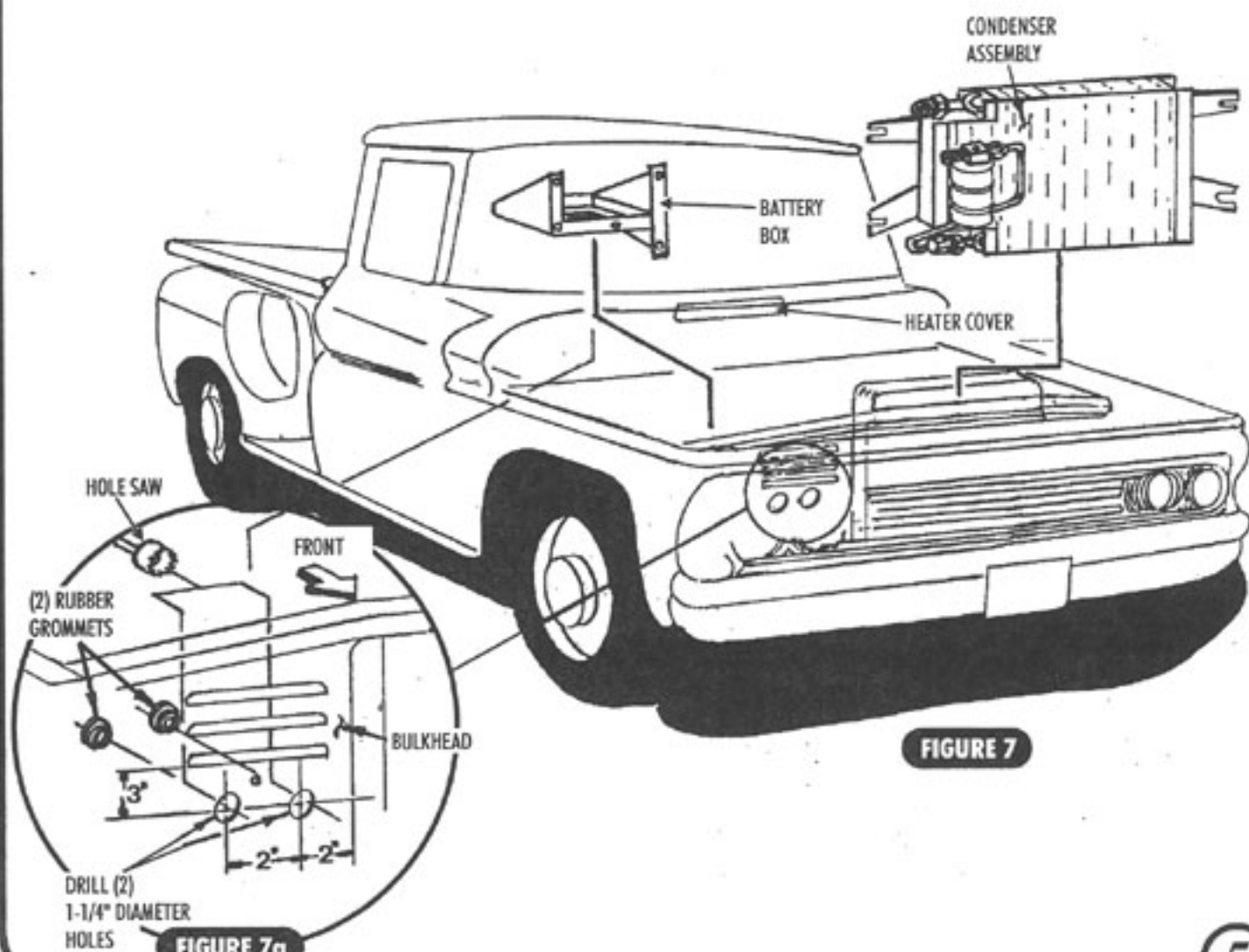
FIGURE 6

ENGINE COMPARTMENT

- 1. INSTALL HEATER COVER AT OEM OPENING OF PREVIOUSLY REMOVED HEATER ASSEMBLY. SEE FIGURE 7.
- 2. INSTALL COMPRESSOR WITH MOUNTING BRACKET, REFER TO SEPARATE INSTRUCTIONS IN BRACKET KIT.

CONDENSER INSTALLATION

- 1. REMOVE BATTERY AND BATTERY BOX AS FIGURE 7 SHOWS.
- 2. CUT WITH HOLE SAW (2) 1-1/4" DIAMETER HOLES ON RADIATOR CORE SUPPORT WITH MEASUREMENTS NOTED AND INSTALL (2) GROMMETS FOR THE A/C HOSE TO PASS THRU THE RADIATOR CORE SUPPORT AS FIGURE 7a SHOWS.
- 3. LEAN TOP OF RADIATOR AND REMOVE (4) OEM RADIATOR BOLTS.
- 4. SLIDE CONDENSER ASSEMBLY BETWEEN RADIATOR AND BULKHEAD AND ALIGN CONDENSER BRACKETS TO OEM RADIATOR BOLTS AS FIGURE 8 SHOWS.



HEATER KIT INSTRUCTIONS

- 1. INSTALL HEATER VALVE IN HEATER HOSE FROM INTAKE MANIFOLD AS CLOSE TO FIREWALL AS POSSIBLE (FIGURE 8a). DIRECT CABLES FROM CONTROL HEAD TO HEATER VALVE AS FIGURE 2 SHOWS.
- 2. INSTALL HEATER HOSES AS FIGURE 8a SHOWS.

REFRIGERATION HOSES (FIGURE 8):

- 1. LUBRICATE AND ATTACH #10 SUCTION HOSE TO COMPRESSOR (1/2" I.D. HOSE, 26" LONG, WITH A 45° FEMALE O-RING FITTING ON THE FIREWALL END AND A 90° FEMALE O-RING FITTING ON THE COMPRESSOR END).
- 2. LUBRICATE AND ATTACH #8 DISCHARGE HOSE TO THE COMPRESSOR (13/32" I.D. HOSE, 43" LONG, WITH A 90° FEMALE O-RING FITTING ON THE COMPRESSOR END AND A 45° FEMALE O-RING FITTING ON THE CONDENSER END).
- 3. LUBRICATE AND ATTACH #6 LIQUID HOSE FROM THE RECEIVER DRIER TO THE EVAPORATOR (5/16" I.D. HOSE 48" LONG WITH FEMALE O-RING FITTING ON THE EVAPORATOR END AND 45° FEMALE O-RING FITTING ON DRIER END).
- 4. RE-ATTACH ALL ITEMS PREVIOUSLY REMOVED.
- 5. YOUR SYSTEM IS READY TO EVACUATE AND CHARGE. THIS SHOULD BE DONE ONLY BY A CERTIFIED AIR CONDITIONING TECHNICIAN.

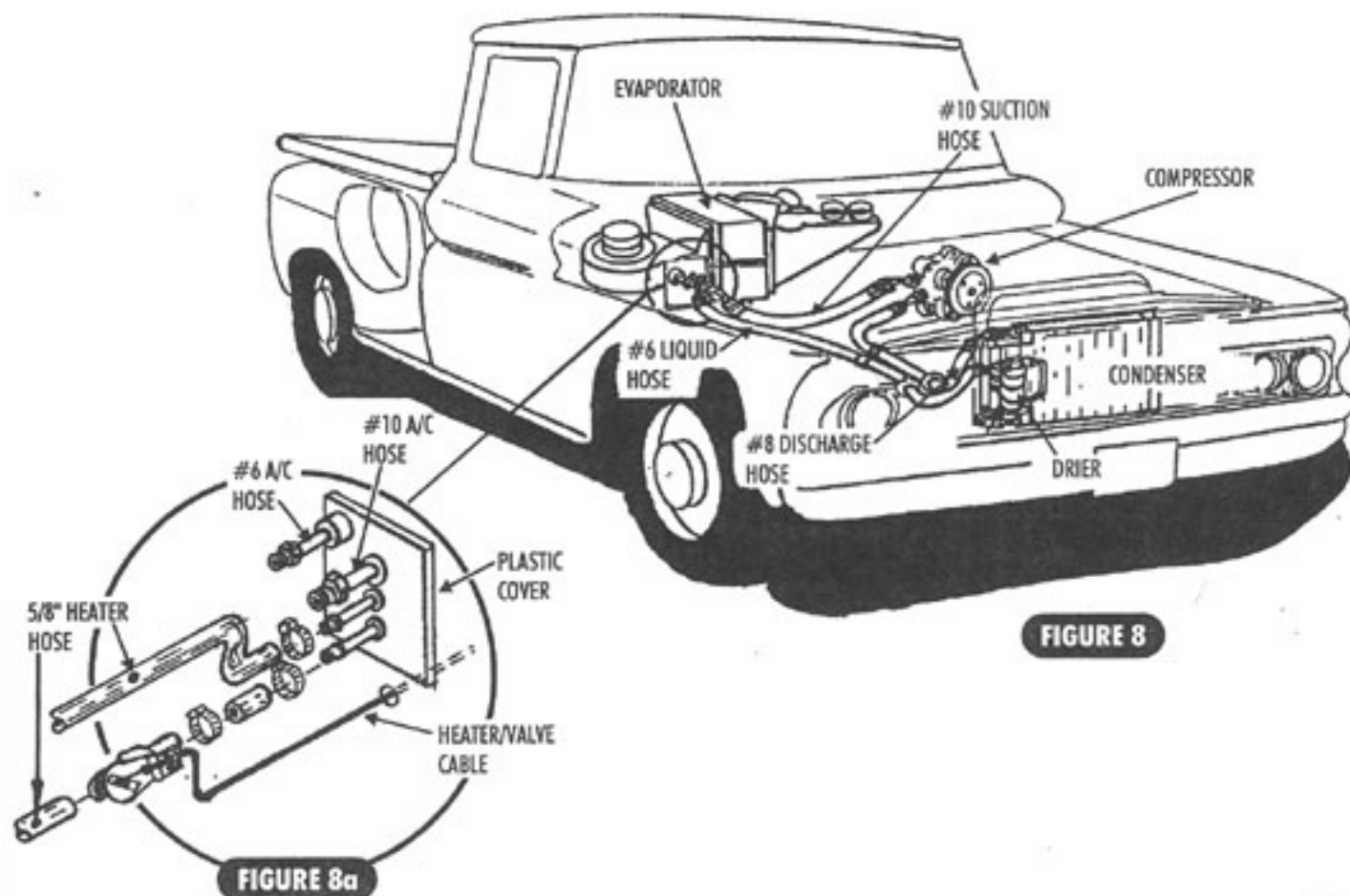
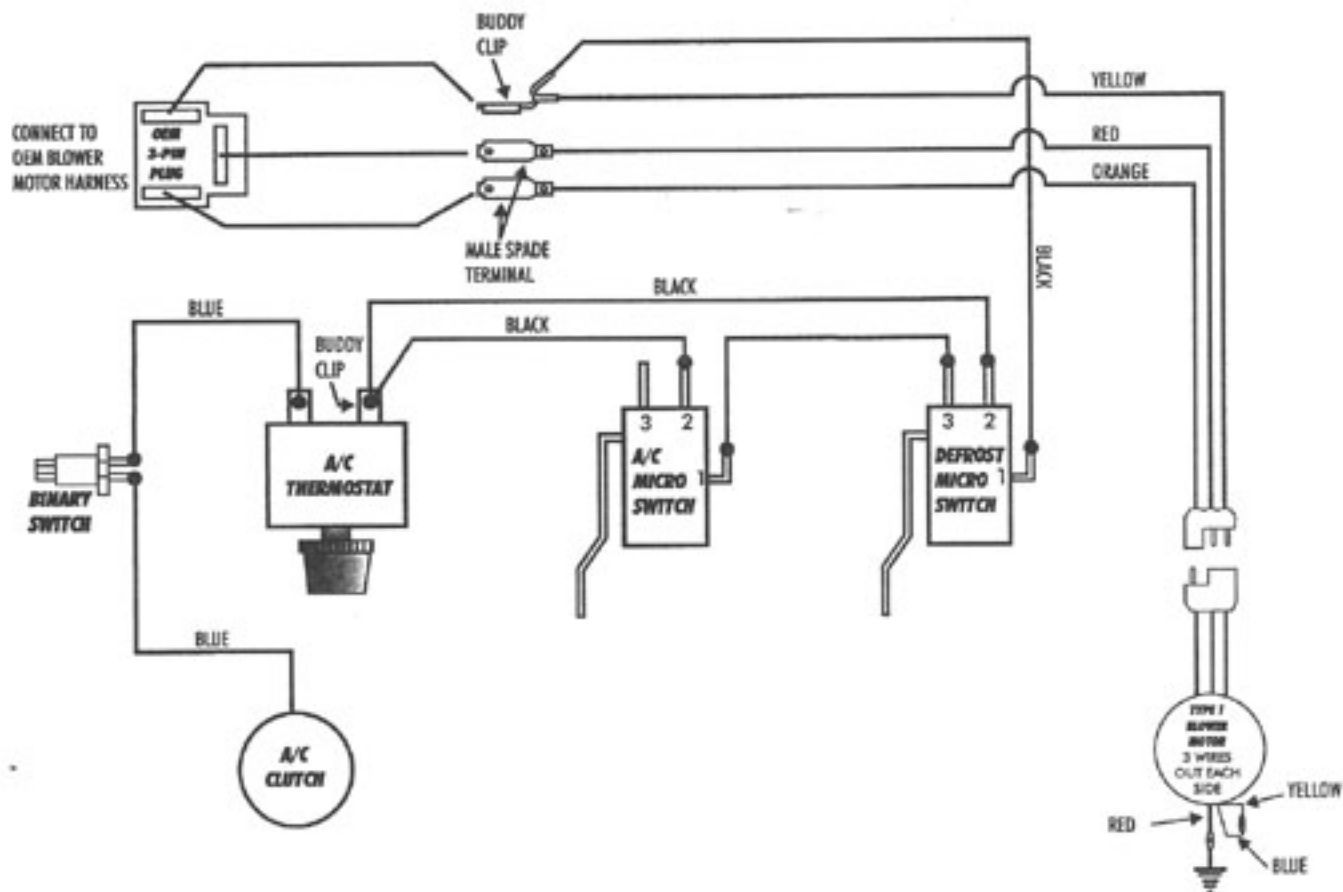


FIGURE 8

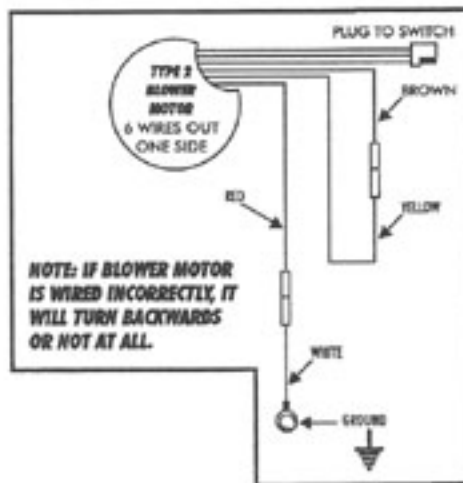
FIGURE 8a

WIRING DIAGRAM

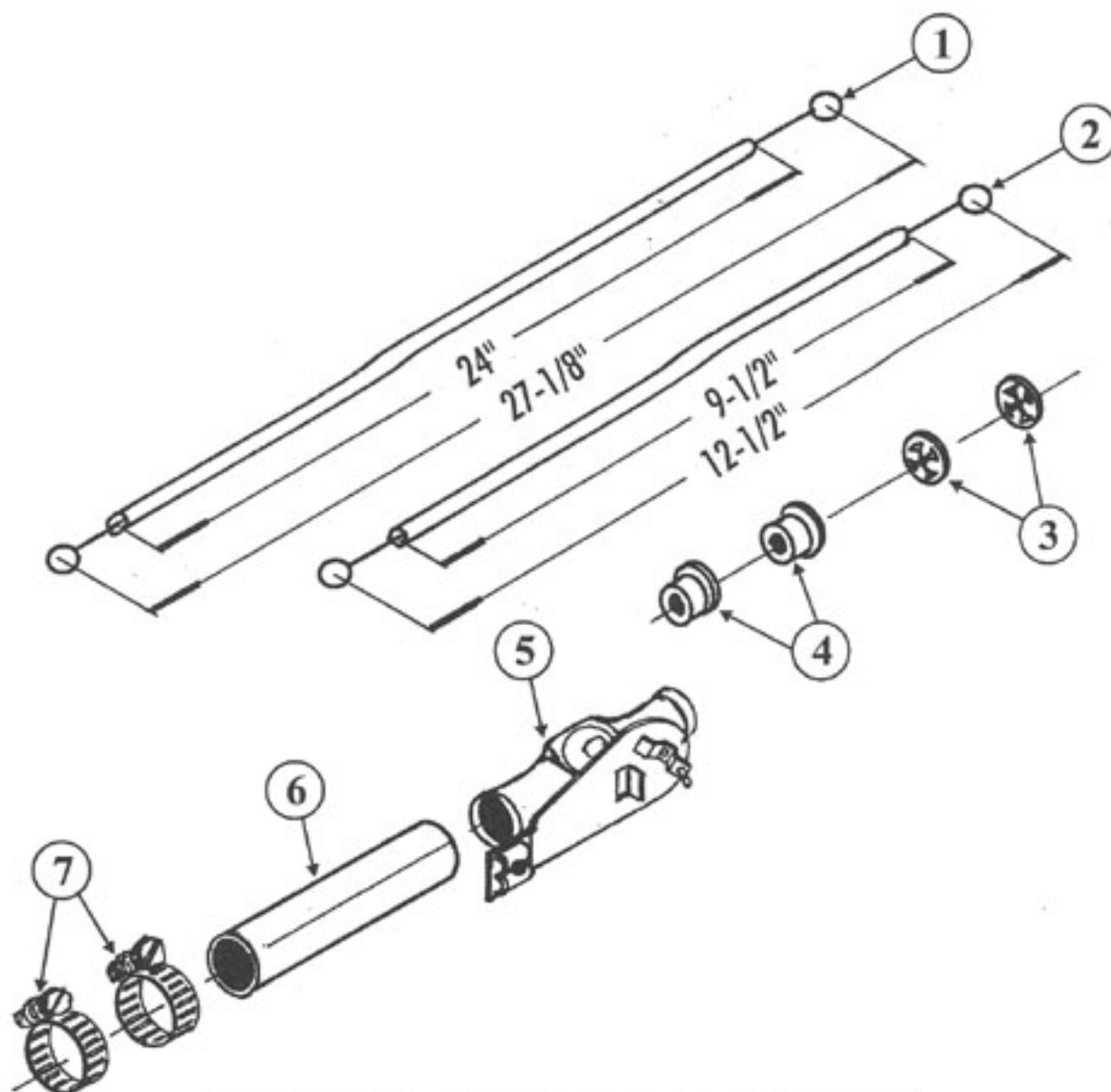


IMPORTANT NOTICE:

IDENTIFY YOUR BLOWER MOTOR BEFORE WIRING
TYPE 1 MOTOR
 OR
TYPE 2 MOTOR



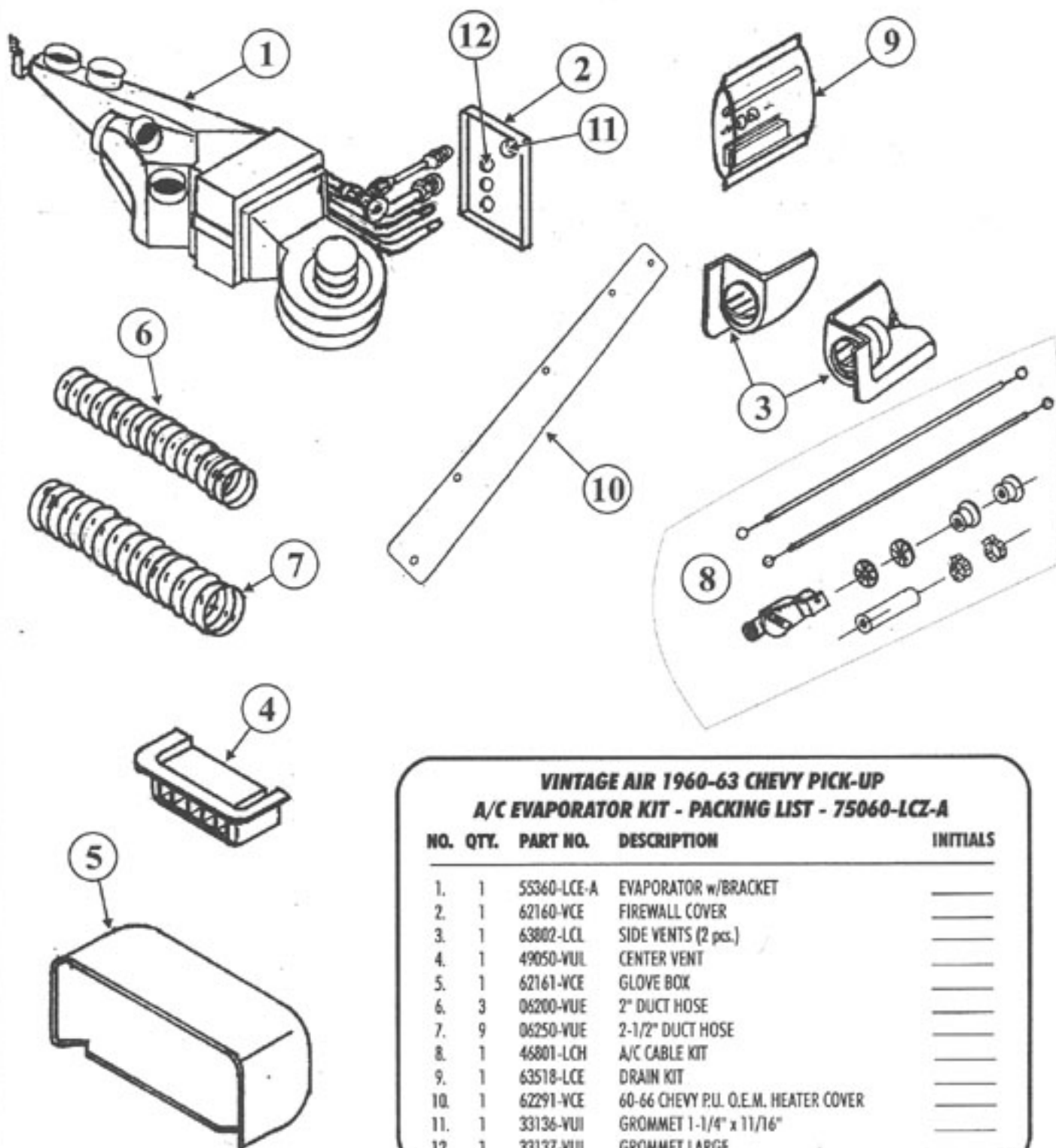
A/C CABLE KIT



**VINTAGE AIR 1960-63 CHEVY PICK-UP
A/C CABLE KIT - PACKING LIST - 46801-LCH**

NO.	QTY.	PART NO.	DESCRIPTION	INITIALS
1.	1	49180-VUI	A/C HEATER CABLE (12-1/2")	_____
2.	1	49185-VUI	HEAT DEFROST CABLE (27-1/2")	_____
3.	2	65975-VUE	RETAINER RING	_____
4.	2	49700-VUE	NYLON SLEEVES	_____
5.	1	46104-VUH	HEATER VALVE	_____
6.	1	31800-VUD	5/8" x 2-1/2" HEATER HOSE	_____
7.	2	31604-VUA	HOSE CLAMPS	_____

EVAPORATOR KIT



VINTAGE AIR 1960-63 CHEVY PICK-UP A/C EVAPORATOR KIT - PACKING LIST - 75060-LCZ-A

NO.	QTY.	PART NO.	DESCRIPTION	INITIALS
1.	1	55360-LCE-A	EVAPORATOR w/BRACKET	_____
2.	1	62160-VCE	FIREWALL COVER	_____
3.	1	63802-LCL	SIDE VENTS (2 pcs.)	_____
4.	1	49050-VUL	CENTER VENT	_____
5.	1	62161-VCE	GLOVE BOX	_____
6.	3	06200-VUE	2" DUCT HOSE	_____
7.	9	06250-VUE	2-1/2" DUCT HOSE	_____
8.	1	46801-LCH	A/C CABLE KIT	_____
9.	1	63518-LCE	DRAIN KIT	_____
10.	1	62291-VCE	60-66 CHEVY P.L. O.E.M. HEATER COVER	_____
11.	1	33136-VUI	GROMMET 1-1/4" x 11/16"	_____
12.	1	33137-VUI	GROMMET LARGE	_____